

European Weekly Summary

August 16, 2019

Key points:

- *A majority of markets in Europe are in a Downtrend. Relatively outperforming sectors are Staples and Health Care.*
- *We have already removed two names this week from our Focus List (O'Neil recommendations): Telecom Plus (TEP.GB) and Dunelm (DNLN.GB).*
- *Through our bearish view, we recommend that investors who need to be invested focus on stocks with defensive characteristics such as a rising Relative Strength line that is reaching new highs.*

Prepared by:

Tristan d'Aboville, Executive Director – Research Analyst

tristan.daboville@williamoneil.com | Direct: +44 20 3178 7125 | Mobile: +44 77 0344 5260

COMMENTARY

Europe in a Downtrend

- **The Stoxx 600 has been in a Downtrend since August 9 after the index breached key support.** Weakness has accelerated this week and spread across the region: 13 out of the 18 markets we cover in Europe are now in a Downtrend. The remaining are in an Uptrend Under Pressure. **Selling pressure in leadership is largely reflected by the scarcity of actionable ideas across sectors.**
- **This week, we removed Dunelm (DNLM.GB) and Telecom Plus (TEP.GB) from our European Focus List.**
- **Relative leaders are emerging in defensive sectors, namely Staples and Health Care.**
 - **On our Focus List**, the best action remains concentrated in these two sectors. In Staples, **Greig Seafood (GSF.NO)**, **Mowi (MHG.NO)**, **Diageo (DGE.GB)**, and **AAK (AAK.SE)** are still trading constructively, reflected by their rising Relative Strength lines. In Healthcare, **Carl Zeiss Meditech (AFX.DE)**, **Coloplast (COL.DK)**, and **Lonza (LONN.CH)**

have similar characteristics. Those stocks should be overweighted in your portfolio.

- **Outside of the Focus List**, Staples stocks with Relative Strength lines at new highs include **Orkla (ORK.NO)**, **Nestle (NESN.CH)**, **Beiersdorf (BEIX.DE)**, and **Danone (BSN.FR)**. In Health Care, focus on **Genmab (GEN.DK)**.

Focus on stocks with rising Relative Strength lines

- In a such an environment, we recommend focusing on relative leaders, denoted by the common characteristic of a rising Relative Strength line that is reaching new highs. **On the next page, we list key European stocks that are displaying such characteristics along with strong fundamental characteristics (EPS and SMR Rating >70).**

European Weekly Summary

WILLIAM O'NEIL+CO.

Symbol	Name	Sector Name	Mkt Val, USD (Mil)	RS Line Reaching New High	EPS Rnk Wkly, Cur Wk	SMR Nmbr Rtg	Composite Rating	A/D, Nmbr Rtg, Cur Dy	Vol, Avg Dly Dollar Vol (000), USD	WON Focus List
JMT.PT	Jeronimo Martins	Retail	9,888	1	92	71	95	10	12,401	
AFXX.DE	Carl Zeiss Meditec (Xet)	Health Care	9,727	1	94	72	98	22	16,861	Yes
BALB.SE	Fastighets Balder B	Financial	5,829	1	70	73	89	18	10,481	
HUA.SE	Hufvudstaden A	Financial	3,712	1	75	73	92	10	4,077	
PSPN.CH	Psp Swiss Property Ag	Financial	6,064	1	81	73	95	48	15,402	
G24X.DE	Scout24 (Xet)	Technology	6,156	1	94	75	97	27	12,486	
DNA.FI	Dna	Technology	3,078	1	82	76	86	-3	3,568	
INGE.FR	Ingenico Group	Financial	6,053	1	84	85	99	34	29,009	
MHG.NO	Mowi	Consumer Staple	12,946	1	94	85	98	21	25,503	Yes
WIHS.SE	Wihlborgs Fastigheter	Financial	2,312	1	81	86	95	16	3,015	
COL.ES	Inmobiliaria Colonial	Financial	5,769	1	84	89	87	13	7,407	
DB1X.DE	Deutsche Boerse (Xet)	Financial	26,858	1	86	89	94	-7	72,805	
ROFR.FR	Teleperformance	Capital Equipment	12,059	1	95	89	99	20	25,487	Yes
MTXX.DE	Mtu Aero Engines (Xet) Hldg.	Capital Equipment	13,702	1	89	90	96	33	28,280	
AOXX.DE	Alstria Office Reit(Xet)	Financial	2,841	1	81	95	88	3	6,328	
WDP.BE	Wdp	Financial	4,132	1	89	99	98	-1	5,676	

Sector Heat Map: Average Perf. - Market Cap Average Weighted

(Market Cap > \$0.5BN & ADV > \$1M)

Sectors	5 Days	4 Weeks	8 Weeks	13 Weeks	26 Weeks	52 Weeks
Basic Material	-3.3%	-8.8%	-8.2%	-5.7%	-4.0%	-6.0%
Capital Equipment	-2.8%	-5.4%	-6.0%	-3.7%	3.4%	-1.5%
Consumer Cyclical	-3.7%	-7.6%	-5.6%	-3.8%	4.1%	-0.4%
Consumer Staple	-0.2%	-0.2%	0.7%	2.6%	12.7%	10.5%
Energy	-2.4%	-8.3%	-8.8%	-8.9%	-8.2%	-7.1%
Financial	-2.2%	-7.4%	-5.4%	-6.2%	-1.8%	-6.3%
Health Care	-0.5%	0.4%	0.7%	5.7%	8.2%	8.2%
Retail	-3.3%	-5.6%	-1.2%	-2.4%	3.3%	0.6%
Technology	-2.9%	-4.3%	-3.4%	-2.4%	5.7%	0.9%
Transportation	-3.6%	-3.7%	-0.8%	0.4%	3.7%	-5.7%
Utility	-0.7%	-1.8%	-1.6%	1.3%	4.5%	13.1%

Source: William O'Neil + Co.

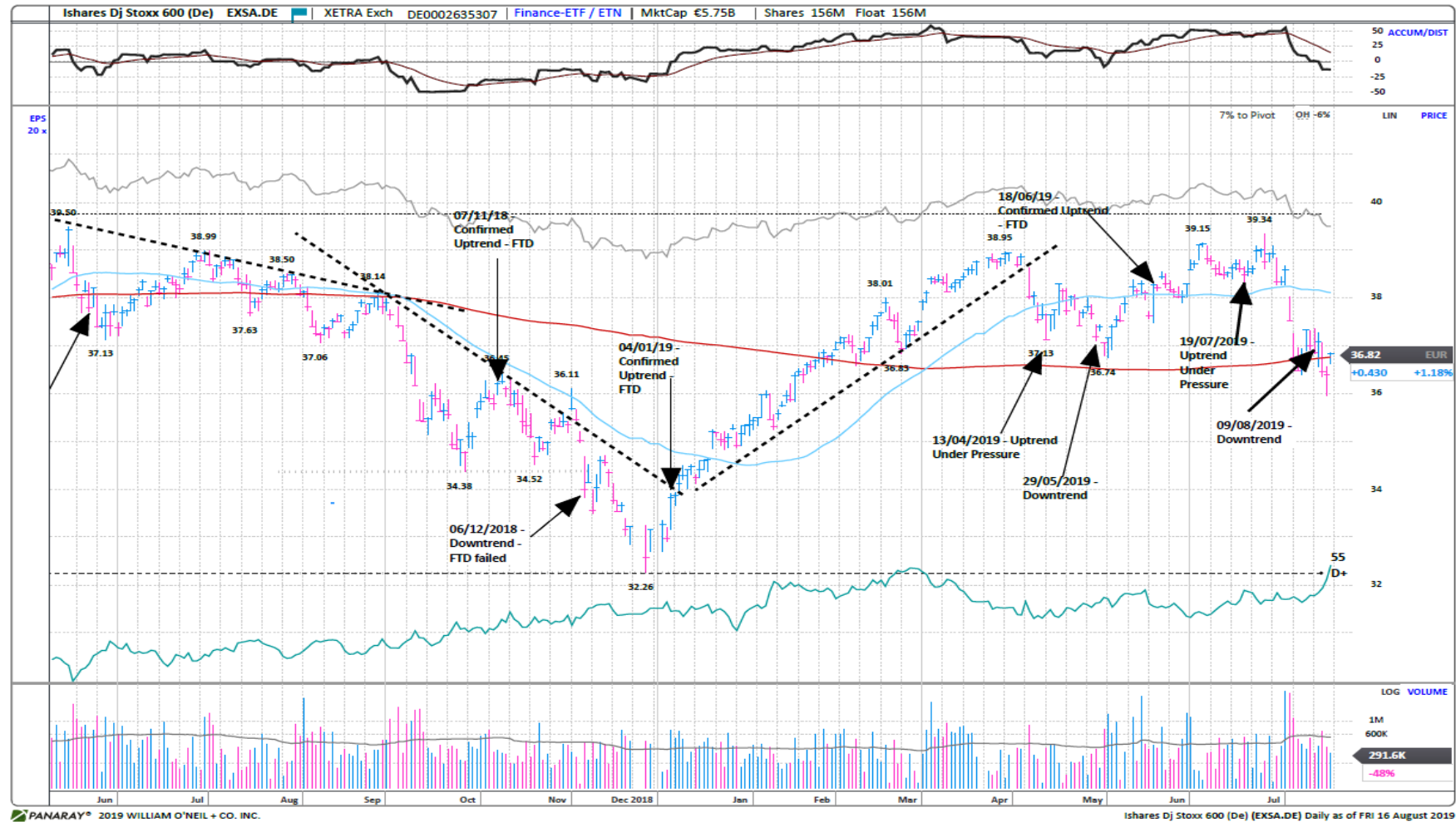
Market Conditions

O'Neil Methodology

Country	Market Condition	Distribution Days
Austria	 Correction	-
Belgium	Correction	-
Czech Republic	Rally Attempt	-
Denmark	Under Pressure	5
Finland	Correction	-
France	Under Pressure	4
Germany	Correction	-
Greece	 Under Pressure	7
Ireland	Correction	-
Italy	 Correction	-
Luxembourg	Correction	-
Netherlands	Correction	-
Norway	Correction	-
Portugal	Correction	-
Spain	Correction	-
Stoxx600	Correction	-
Sweden	Correction	-
Switzerland	Under Pressure	5
UK	Correction	-
All Europe (Median)		5.00
All Europe (Average)		5.25

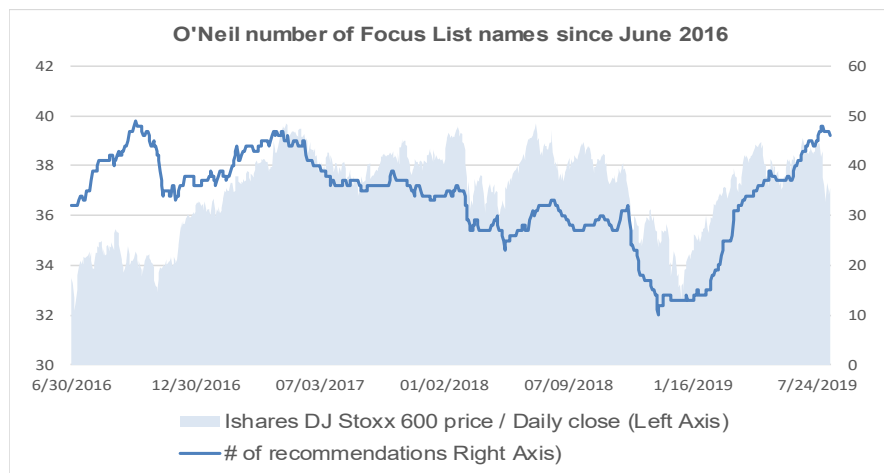
Source: William O'Neil + Co.

iShares DJ Stoxx 600 (EXSA.DE) – Daily Datagraph™

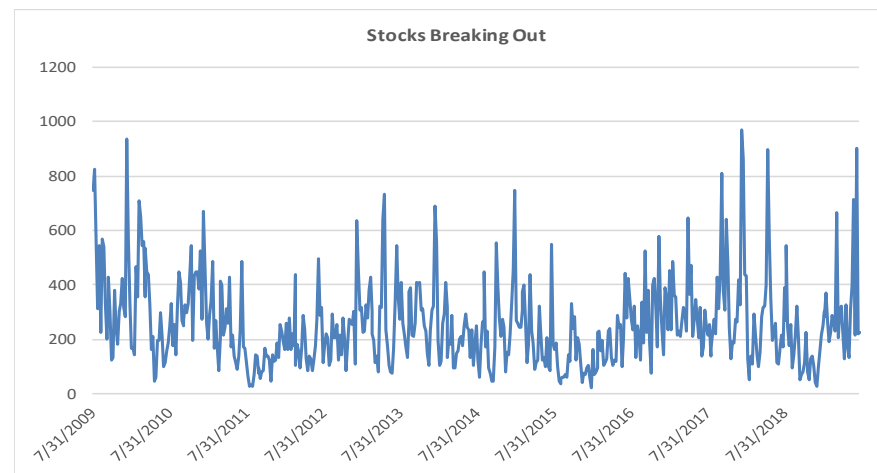


Source: PANARAY®/ William O'Neil + Co.

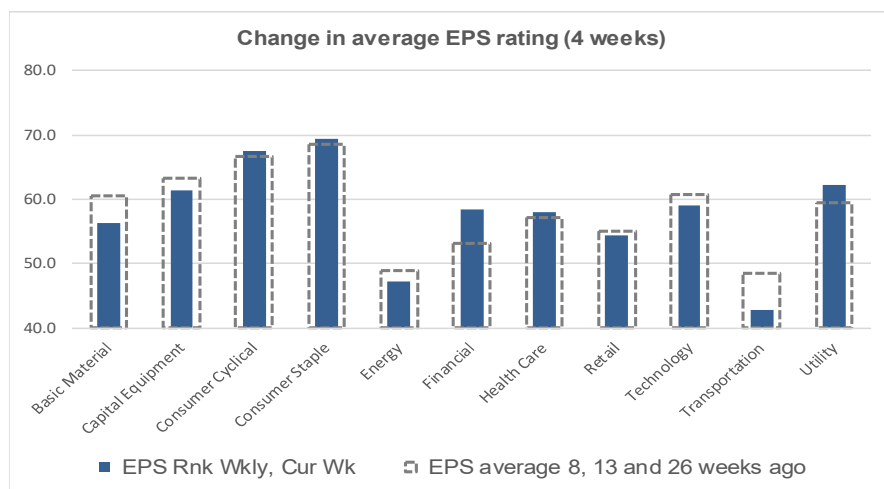
Key Metrics Change: EPS, RS, # of EFL Names & Breakouts



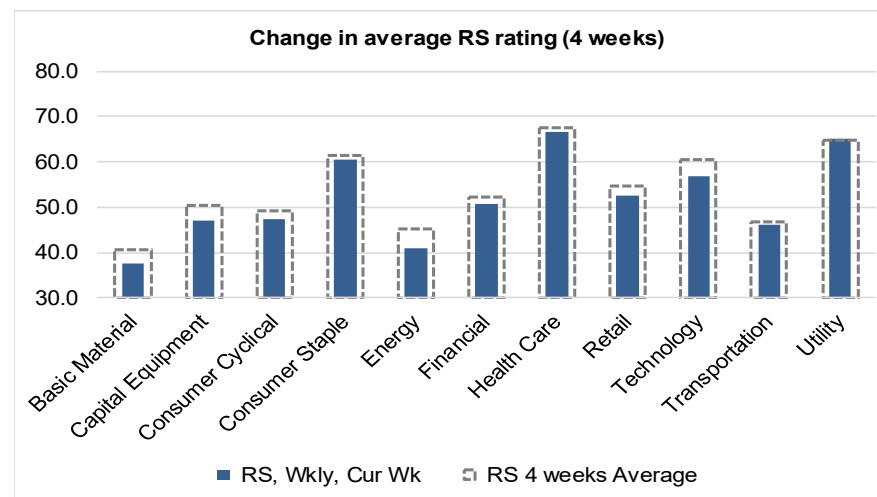
Source: William O'Neil + Co.



Source: William O'Neil + Co.



Source: William O'Neil + Co.



Source: William O'Neil + Co.

How To Read The Sector Card

Outperforming

Stocks breaking out from pivot

We recommend buying stocks at the breakout level. A breakout is a price movement of the security through an identified level of resistance (pivot point) after forming a consolidation base. Our proprietary chart patterns are based on over 50 years of our active research into the behavior of equities.

Laggards

Stocks in which investors are losing interest

Laggards are stocks showing technical weakness. We believe these stocks are laggards relative to their own domestic markets and, if owned as a long, need to be reviewed carefully as they may be vulnerable to further downside risk and underperformance.

European Focus List

O'Neil Recommendations

The European Focus List (EFL) is a proprietary list of long ideas that fit the fundamental and technical criteria of the O'Neil Methodology.

Top Rated

Stocks displaying the best Composite Rating

The **Composite Rating** combines the EPS Rank, Relative Strength Rating, Industry Group Rank, SMR Rating, Accumulation/Distribution Rating, and the stock's percent off its 52-week high. More weight is placed on EPS Rank and Relative Strength Ratings. The resulting rating of technical and fundamental factors is compared against all other stocks in the trading country and assigned a rating from 1 to 99, with 99 being the best. A rating of 90 means the stock has outperformed 90% of all other stocks.

Basic Material

Outperforming

Stocks breaking out from consolidation

Symbol	Name	Mkt Val, USD (Mil)	Days from Pivot, Most Rcnt Dly Base
--------	------	-----------------------	---

Top Rated

Stocks Displaying the Best Composite Rating

Symbol	Name	Mkt Val, USD (Mil)	Composite Rating
IMCD.NL	Imcd Group	4,268	96
FXPO.GB	Ferrexpo	1,545	95
HGM.GB	Highland Gold Mining	978	93
POLY.GB	Polymetal International	6,180	91
HILS.GB	Hill & Smith	1,082	88
BAKK.NO	Bakkafrost	2,790	87
KEMR.FI	Kemira	2,079	83
ACA.GB	Acacia Mining	1,232	83
AIR.FR	Air Liquide	57,878	82
CEY.GB	Centamin	1,940	81

Laggards

Stocks showing technical weakness

Symbol	Name	Mkt Val, USD (Mil)	A/D, Nmbr Rtg, Cur Wk
VAS.AT	Voestalpine	3,879	-54
SZGX.DE	Salzgitter (Xet)	999	-49
SSBF.SE	Ssab B	1,583	-47
SSAA.SE	Ssab A	733	-46
ERA.FR	Eramet	1,102	-44
AMG.NL	Amg Advd.Metallurgical	630	-43
CLN.CH	Clariant	5,813	-41
ACX.ES	Acerinox 'R'	2,113	-41
FPE3X.DE	Fuchs Petrolub Pf. (Xet)	2,364	-39
SIKACH	Sika	19,826	-35
EVKX.DE	Evonik Industries (Xet)	10,990	-34
METB.FI	Metsa Board B	1,480	-34
NVG.PT	Navigator Comp	2,273	-34
TEN.IT	Tenaris	12,374	-33
JMAT.GB	Johnson Matthey	6,494	-29
FPEX.DE	Fuchs Petrolub (Xet)	2,320	-28
NK.FR	Imerys	3,098	-28
NZY.DK	Novozymes B	9,632	-25
TKAX.DE	Thyssenkrupp (Xet)	6,507	-23
MT.NL	Arcelormittal	12,989	-23
SDFX.DE	K + S (Xet)	2,927	-23
BOL.SE	Boliden Ord Shs	5,518	-22
SCB.DK	Schouw And	1,739	-22

European Focus List

O'Neil Recommendations

Symbol	Name	Mkt Val, USD (Mil)	Focus List Since
GIVN.CH	Givaudan 'N'	24,282	21/11/18
SIKA.CH	Sika	19,826	25/4/19
IMCD.NL	Imcd Group	4,268	4/3/19

Capital Equipment

Outperforming

Stocks breaking out from consolidation

Symbol	Name	Mkt Val, USD (Mil)	Days from Pivot, Most Rcnt Dly Base
--------	------	-----------------------	---

Top Rated

Stocks Displaying the Best Composite Rating

Symbol	Name	Mkt Val, USD (Mil)	Composite Rating
RWS.GB	Rws Holdings	1,876	99
FOUR.GB	4imprint Group	980	99
ROFR.FR	Teleperformance	12,059	99
VAR1X.DE	Varta (Xet)	3,170	98
RST.GB	Restore	633	98
INTE.NL	Intertrust	1,779	98
HLMA.GB	Halma	8,869	98
ULE.GB	Ultra Electronics Hdg.	1,839	97
IWG.GB	Iwg	4,442	96
MTXX.DE	Mtu Aero Engines (Xet) I	13,702	96

Laggards

Stocks showing technical weakness

Symbol	Name	Mkt Val, USD (Mil)	A/D, Nmbr Rtg, Cur Wk
OERL.CH	Oc Oerlikon Corporator	3,047	-76
FIN.CH	Georg Fischer	3,259	-57
BUCN.CH	Bucher Industries	2,899	-53
MT.IT	Maire Tecnimont	735	-52
DEZX.DE	Deutz (Xet)	653	-51
WACX.DE	Wacker Neuson (Xet)	1,121	-49
BOY.GB	Bodycote	1,517	-48
WEIR.GB	Weir Group	3,967	-46
ACS.ES	Acs Activ.Constr.Y Serv.	11,462	-44
JUN3X.DE	Jungheinrich Pfs. (Xet)	962	-44
IMA.IT	Ima Indua.Macchine	2,691	-43
VALM.FI	Valmet	2,617	-43
KGXX.DE	Kion Group (Xet)	5,338	-43
JENX.DE	Jenoptik (Xet)	1,342	-43
RXL.FR	Rexel	2,912	-42
SGSN.CH	Sgs 'N'	18,012	-41
WSUX.DE	Washtec (Xet)	703	-41
KRNX.DE	Krones (Xet)	1,685	-41
SIEX.DE	Siemens (Xet)	80,260	-41
HEX.NO	Hexagon Composites	551	-40
ISS.DK	Iss	4,549	-40
CGCB.FI	Cargotec 'B'	1,534	-38
PFVX.DE	Pfeiffer Vacuum (Xet) Te	1,340	-38
BOSK.NL	Boskalis Westminster	2,540	-37

European Focus List

O'Neil Recommendations

Symbol	Name	Mkt Val, USD (Mil)	Focus List Since
HSV.GB	Homeserve	4,459	3/7/18
LDO.IT	Leonardo	6,300	19/6/19
SAXX.DE	Stroeer (Xet)	4,267	3/7/19
EDEN.FR	Edenred	11,674	23/1/19
ROFR.FR	Teleperformance	12,059	13/1/15
SGM.FR	Safran	56,946	4/4/19
HLMA.GB	Halma	8,869	4/3/19
AIRS.FR	Airbus	105,563	18/3/19

Consumer Cyclical

Outperforming

Stocks breaking out from consolidation

Symbol	Name	Mkt Val, USD (Mil)	Days from Pivot, Most Rcnt Dly Base
FGP.GB	First Group	1,794	2

Laggards

Stocks showing technical weakness

Symbol	Name	Mkt Val, USD (Mil)	A/D, Nmbr Rtg, Cur Wk
CINE.GB	Cineworld Group	3,523	-57
DWNIX.DE	Deutsche Wohnen (Xet)	12,155	-51
HEIX.DE	Heidelbergcement (Xet)	13,040	-46
TKTT.FR	Tarkett	944	-46
ROC.DK	Rockwool International	2,318	-45
FORN.CH	Forbo Hdq.	2,369	-43
BOSSX.DE	Boss (Hugo) (Xet)	3,859	-41
KINR.SE	Kindred Group Sdr	1,161	-41
MMB.FR	Lagardere Groupe	2,747	-39
MEL.ES	Melia Hotels Intl.	1,768	-38
AML.GB	Aston Martin Lagonda C	1,229	-38
A3M.ES	Atresmedia Corp	794	-37
MCL.FR	Michelin	18,464	-36
GESP.ES	Gestamp Automocion	2,511	-35
TL5.ES	Mediaset Espana Com	1,911	-34
BETS.SE	Betsson B	587	-33
SIX3X.DE	Sixt Pref. (Xet)	952	-33
DAIX.DE	Daimler (Xet)	48,168	-31
BMW3X.DE	Bmw Pref. (Xet)	2,989	-30
PSMX.DE	Prosiebensat 1 (Xet) Me	2,785	-29
MOTB.SE	Modern Times Group M	572	-28
GVR.IE	Glenveagh Properties	639	-27
SEB.FR	Seb	7,366	-27
HLEX.DE	Hella Gmbh & Co. Kgaz	4,285	-27

European Focus List

O'Neil Recommendations

Symbol	Name	Mkt Val, USD (Mil)	Focus List Since
PUMX.DE	Puma (Xet)	10,840	20/3/18
CFR.CH	Richemont N	39,447	24/7/19
LVMH.FR	Lvmh	194,099	19/3/19
THQ.SE	Thq Nordic	2,319	19/3/19
NIBE.SE	Nibe Industrier B	5,919	6/2/19

Top Rated

Stocks Displaying the Best Composite Rating

Symbol	Name	Mkt Val, USD (Mil)	Composite Rating
GAW.GB	Games Workshop	1,721	99
PUMX.DE	Puma (Xet)	10,840	99
ABDP.GB	Ab Dynamics	618	99
THQ.SE	Thq Nordic	2,319	99
INF.GB	Informa	12,623	98
DMGT.GB	Daily Mail 'A'	1,972	97
LIAB.SE	Lindab International	836	97
CDI.FR	Christian Dior	86,986	97
NIBE.SE	Nibe Industrier B	5,919	97
MSLH.GB	Marshalls	1,494	96

Consumer Staple

Outperforming

Stocks breaking out from consolidation

Symbol	Name	Mkt Val, USD (Mil)	Days from Pivot, Most Rcnt Dly Base
--------	------	-----------------------	---

Laggards

Stocks showing technical weakness

Symbol	Name	Mkt Val, USD (Mil)	A/D, Nm br Rtg, Cur Wk
ARYN.CH	Aryza	696	-60
CHR.DK	Christian Hansen Holdi	10,506	-38
GL9.IE	Glanbia	3,601	-35
CWK.GB	Cranswick	1,601	-30
STG.DK	Scandinavian Tobacco	1,080	-28
SWMASE	Swedish Match	6,531	-24
RB.GB	Reckitt Benckiser Group	52,224	-24

European Focus List

O'Neil Recommendations

Symbol	Name	Mkt Val, USD (Mil)	Focus List Since
GSF.NO	Grieg Seafood	1,554	20/9/18
CPR.IT	Davide Campari Milano	10,046	16/11/18
MHG.NO	Mowi	12,946	5/10/18
KRZ.IE	Kerry Group 'A'	20,682	7/5/19
DGE.GB	Diageo	97,991	21/12/18
AAK.SE	Aak	5,063	14/5/19

Top Rated

Stocks Displaying the Best Composite Rating

Symbol	Name	Mkt Val, USD (Mil)	Composite Rating
MHG.NO	Mowi	12,946	98
GCC.IE	C&C Group	1,416	97
GSF.NO	Grieg Seafood	1,554	95
KRZ.IE	Kerry Group 'A'	20,682	95
AAK.SE	Aak	5,063	95
RBR.DK	Royal Unibrew	3,734	94
DGE.GB	Diageo	97,991	93
SALM.NO	Salmar	5,457	92
CAB.DK	Carlsberg B	17,528	92
ULVR.GB	Unilever (Uk)	70,384	91

Energy

Outperforming

Stocks breaking out from consolidation

Symbol	Name	Mkt Val, USD (Mil)	Days from Pivot, Most Rcnt Dly Base
--------	------	-----------------------	---

Top Rated

Stocks Displaying the Best Composite Rating

Symbol	Name	Mkt Val, USD (Mil)	Composite Rating
EDPR.PT	Edp Renovaveis	8,925	97
DEN.DK	Orsted	41,509	95
GKP.GB	Gulf Keystone Ptl.(Di)	651	94
ABIO.FR	Albioma	832	91
CAPX.DE	Encavis Ag	1,099	91
VPK.NL	Koninklijke Vopak	6,130	90
SEM.ES	Solaria Energia Y Medic	709	90
RUI.FR	Rubis	5,670	88
NEST.FI	Neste	25,541	85
SCAT.NO	Scatec Solar	1,211	76

Laggards

Stocks showing technical weakness

Symbol	Name	Mkt Val, USD (Mil)	A/D, Nm br Rtg, Cur Wk
OCY.NO	Ocean Yield	849	-55
BDRR.NO	Borr Drilling	569	-53
RDSANL	Royal Dutch Shell A	118,264	-49
FUR.NL	Fugro	550	-48
GLEN.GB	Glencore	36,571	-43
VEW.DK	Vestas Windsystems	14,959	-40
TAL.FR	Total	128,271	-40
WG.GB	Wood Group (John)	3,570	-39
SCBL.AT	Schoeller-Bleckmann	985	-37
SUBC.NO	Subsea 7	2,741	-37
SBMO.NL	Sbm Offshore	3,328	-36
ENI.IT	Eni	52,894	-35
AKER.NO	Aker	3,303	-35
DNO.NO	Dno	1,381	-33
HTG.GB	Hunting	838	-32
RDSB.GB	Royal Dutch Shell B	102,345	-29
EQNR.NO	Equinor	54,571	-28
EURN.BE	Euronav	1,603	-27
AKEP.NO	Aker Bp	8,858	-22
AKSO.NO	Aker Solutions	741	-21

European Focus List

O'Neil Recommendations

Symbol	Name	Mkt Val, USD (Mil)	Focus List Since
DEN.DK	Orsted	41,509	21/11/18

Financial

Outperforming

Stocks breaking out from consolidation

Symbol	Name	Mkt Val, USD (Mil)	Days from Pivot, Most Rcnt Dly Base
INPP.GB	International Pbpert.	2,904	2
BEZ.GB	Beazley	3,798	4
SPSN.CH	Swiss Prime Site	7,511	4

Laggards

Stocks showing technical weakness

Symbol	Name	Mkt Val, USD (Mil)	A/D, Nmbr Rtg, Cur Wk
LGEM.GB	Legal & General	16,040	-62
A5G.IE	Aib Group	7,176	-62
LLOY.GB	Lloyds Banking Group	41,372	-60
CYBG.GB	Cybg	2,304	-56
UBSG.CH	Ubs Group	39,421	-55
NDASE	Nordea Bank	40,686	-54
BLND.GB	British Land	5,284	-53
BIRG.IE	Bank Of Ireland Group	3,753	-53
WH.NL	Wereldhave	788	-53
RSE.GB	Riverstone Energy	660	-53
STB.NO	Storebrand	2,731	-51
NOFI.NO	Norwegian Finans Hold	1,166	-51
RESURS.ES	Resurs Holding	1,056	-51
DEQX.DE	Deutsche Euroshop (Xet)	1,577	-51
KBCABE	Kbc Ancora	2,945	-50
AT1X.DE	Aroundtown (Xet)	9,640	-50
MAP.ES	Mapfre	7,978	-50
BBOX.GB	Tritax Big Box Reit	2,934	-49
DAB.DK	Danske Bank	11,315	-48
CABK.ES	Caixabank	13,342	-48
ERS.AT	Erste Group Bank	14,271	-47
SAN.ES	Banco Santander	62,668	-45
INVP.GB	Investec	3,385	-44
AV.GB	Aviva	16,968	-44

European Focus List

O'Neil Recommendations

Symbol	Name	Mkt Val, USD (Mil)	Focus List Since
WLN.FR	Worldline	12,194	11/6/19
ADYE.NL	Adyen	21,570	27/2/19
LSE.GB	London Stock Ex.Group	28,476	19/2/19

Top Rated

Stocks Displaying the Best Composite Rating

Symbol	Name	Mkt Val, USD (Mil)	Composite Rating
NEXI.IT	Nexi	6,834	99
INGE.FR	Ingenico Group	6,053	99
MONT.BE	Montea Comm	1,343	99
LIFC.SE	Lifco B	4,181	98
KLOB.SE	Kloven B	1,454	98
ATL.IT	Atlantia	20,970	98
SCH.GB	Safecharge Intl.Group	835	98
WDP.BE	Wdp	4,132	98
HYQX.DE	Hypoport Finance (Xet)	1,713	98
EXP.N.GB	Experian	27,578	98

Health Care

Outperforming

Stocks breaking out from consolidation

Symbol	Name	Mkt Val, USD (Mil)	Days from Pivot, Most Rcnt Dly Base
--------	------	-----------------------	---

Laggards

Stocks showing technical weakness

Symbol	Name	Mkt Val, USD (Mil)	A/D, Nmbr Rtg, Cur Wk
BION.CH	Bb Biotech N	3,415	-50
IPN.FR	Ipsen	8,580	-45
EUF.FR	Eurofins Scientific	7,280	-38
GSN.DK	Gn Store Nord	6,221	-33
FMEX.DE	Fresenius Med.Care (Xt)	19,798	-29
FREX.DE	Fresenius (Xet)	20,976	-24
NMC.GB	Nmc Health	4,577	-22

European Focus List

O'Neil Recommendations

Symbol	Name	Mkt Val, USD (Mil)	Focus List Since
ELKB.SE	Elektro B	4,951	26/6/19
AFXX.DE	Carl Zeiss Meditec (Xet)	9,727	8/1/19
COL.DK	Coloplast B	24,145	26/3/19
SRT3X.DE	Sartorius Pref. (Xet)	6,987	1/4/19
GSN.DK	Gn Store Nord	6,221	27/2/19
LONN.CH	Lonza Group	25,841	29/7/19
KORI.FR	Korian	3,189	18/3/19

Top Rated

Stocks Displaying the Best Composite Rating

Symbol	Name	Mkt Val, USD (Mil)	Composite Rating
FAE.ES	Faes Farma	1,429	99
SN.GB	Smith & Nephew	19,917	99
COL.DK	Coloplast B	24,145	99
SRT3X.DE	Sartorius Pref. (Xet)	6,987	99
DIM.FR	Sartorius Stedim Biotec	13,547	99
BTG.GB	Btg	3,948	99
AZN.GB	Astrazeneca	114,898	99
AFXX.DE	Carl Zeiss Meditec (Xet)	9,727	98
DIA.IT	Diasorin	6,470	98
CEVI.SE	Cellavision	865	98

Retail

Outperforming

Stocks breaking out from consolidation

Symbol	Name	Mkt Val, USD (Mil)	Days from Pivot, Most Rcnt Dly Base
KESK.FI	Kesko B	4,269	6

Laggards

Stocks showing technical weakness

Symbol	Name	Mkt Val, USD (Mil)	A/D, Nm br Rtg, Cur Wk
DUFN.CH	Dufry 'R'	3,944	-47
KGF.GB	Kingfisher	4,904	-46
FNAC.FR	Fnac Darty	1,656	-44
KER.FR	Kering	59,983	-40
SBRY.GB	Sainsbury (J)	4,746	-39
TSCO.GB	Tesco	25,282	-36
CRFR.FR	Carrefour	13,577	-35
SPD.GB	Sports Direct Intl.	1,421	-27
MRW.GB	Morrison(Wm)spmks.	5,143	-27
MKS.GB	Marks & Spencer Group	4,260	-25
COL.BE	Colruyt	6,909	-23
UHRN.CH	The Swatch Group	6,109	-23
MDM.FR	Maisons Du Monde	776	-21

European Focus List

O'Neil Recommendations

Symbol	Name	Mkt Val, USD (Mil)	Focus List Since
DNLM.GB	Dunelm Group	2,043	20/6/19
GRG.GB	Greggs	2,463	14/5/19

Top Rated

Stocks Displaying the Best Composite Rating

Symbol	Name	Mkt Val, USD (Mil)	Composite Rating
AMP.IT	Amplifon	5,538	99
JD.GB	Jd Sports Fashion	6,855	99
BOO.GB	Boohoo Group	3,123	98
MAB.GB	Mitchells & Butlers	1,557	97
BCA.GB	Bca Marketplace	2,294	97
GRG.GB	Greggs	2,463	97
ICASE	Ica Gruppen	10,118	97
KESK.FI	Kesko B	4,269	96
EIG.GB	Ei Group	1,491	95
JMT.PT	Jeronimo Martins	9,888	95

Technology

Outperforming

Stocks breaking out from consolidation

Symbol	Name	Mkt Val, USD (Mil)	Days from Pivot, Most Rcnt Dly Base
ELIS.FI	Elisa	8,186	4

Top Rated

Stocks Displaying the Best Composite Rating

Symbol	Name	Mkt Val, USD (Mil)	Composite Rating
FORT.SE	Fortnox Ab	830	99
AVST.GB	Avast	4,360	99
ASIN.NL	Asm International	4,098	99
NGP.DK	Netcompany Group	1,780	99
ALTE.FR	Alten	3,921	98
SCT.GB	Softcat	2,232	98
INW.IT	Infrastrutture Wireless It	6,142	97
DLGX.DE	Dialog Semicon. (Xet)	3,402	97
NEMX.DE	Nemetschek (Xet)	5,915	97
G24X.DE	Scout24 (Xet)	6,156	97

Laggards

Stocks showing technical weakness

Symbol	Name	Mkt Val, USD (Mil)	A/D, Nmbr Rtg, Cur Wk
TEF.ES	Telefonica	34,289	-69
MELE.BE	Melexis	2,381	-49
FDM.GB	Fdm Group	1,007	-43
SMS.GB	Smart Metering System:	618	-43
PRSM.GB	Blue Prism	897	-42
MAS.ES	Masmovil Ibercom	2,379	-38
TT@G.SE	Trelleborg B	3,059	-37
IDR.ES	Indra Sistemas	1,338	-33
BT.AGB	Bt Group	19,678	-32
ILD.FR	Iliad	5,818	-32
O2DX.DE	Telefonica Dtl. (Xet) Hld	7,018	-32
TIE1.FI	Tieto Oyj	1,783	-31
DAL.IT	Datalogic	804	-30
NEO.FR	Neopost	627	-30
BIC.FR	Bic	2,914	-29
SL@G.SE	Ericsson B	25,296	-28
S92X.DE	Sma Solar Tech. (Xet)	746	-27
ECM.GB	Electrocomp.	2,935	-27
SFSN.CH	Sfs Group	2,680	-27
FDP.GB	First Derivatives	758	-24
WAFX.DE	Siltronic (Xet)	1,894	-21

European Focus List

O'Neil Recommendations

Symbol	Name	Mkt Val, USD (Mil)	Focus List Since
INW.IT	Infrastrutture Wireless It	6,142	2/7/19
NEMX.DE	Nemetschek (Xet)	5,915	13/2/19
CLNX.ES	Cellnex Telecom	11,473	26/7/19
SOI.FR	Soitec	3,080	25/2/19
ASML.NL	Asml Holding	88,924	15/3/19
DSY.FR	Dassault Systemes	36,510	13/2/19
AVV.GB	Aveva Group	7,265	18/3/19
TEMN.CH	Temenos N	11,739	17/4/19

Transportation

Outperforming

Stocks breaking out from consolidation

Symbol	Name	Mkt Val, USD (Mil)	Days from Pivot, Most Rcnt Dly Base
--------	------	-----------------------	---

Laggards

Stocks showing technical weakness

Symbol	Name	Mkt Val, USD (Mil)	A/D, Nm br Rtg, Cur Wk
LHAX.DE	Deutsche Lufthansa (Xe	6,781	-53
DFD.DK	Dfds	1,874	-49
TLGO.ES	Talgo	695	-44
LOGI.ES	Logista Hold	2,621	-42
RYA.GB	Ryanair Hdq. (Lon)	10,870	-40
FNNA.FI	Finnair	849	-40
OES.AT	Osterreichische Post	2,323	-28

European Focus List

O'Neil Recommendations

Symbol	Name	Mkt Val, USD (Mil)	Focus List Since
DSV.DK	Dsv'B'	17,097	9/7/19

Top Rated

Stocks Displaying the Best Composite Rating

Symbol	Name	Mkt Val, USD (Mil)	Composite Rating
HLAX.DE	Hapag Lloyd (Xet)	10,133	98
PST.IT	Poste Italiane	13,267	97
DSV.DK	Dsv'B'	17,097	93
GOG.GB	Go-Ahead Group	1,033	82
WIZZ.GB	Wizz Air Holdings	2,988	79
CKN.GB	Clarkson	865	72
UTA.FR	Air France-Klm	4,724	72
PWTN.CH	Panalpina Welttranspor	5,145	66
DPWX.DE	Deutsche Post (Xet)	38,776	62
BWLP.NO	Bw Lpg	597	51

Utility

Outperforming

Stocks breaking out from consolidation

Symbol	Name	Mkt Val, USD (Mil)	Days from Pivot, Most Rcnt Dly Base
IBE.ES	Iberdrola	64,525	3

Laggards

Stocks showing technical weakness

Symbol	Name	Mkt Val, USD (Mil)	A/D, Nm br Rtg, Cur Wk
EOANX.DEE	On (Xet)	20,028	-38
REE.ES	Red Electrica	10,534	-31

European Focus List

O'Neil Recommendations

Symbol	Name	Mkt Val, USD (Mil)	Focus List Since
--------	------	-----------------------	------------------

Top Rated

Stocks Displaying the Best Composite Rating

Symbol	Name	Mkt Val, USD (Mil)	Composite Rating
VERB.AT	Verbund	10,042	99
VIE.FR	Veolia Environ	13,728	97
ENEL.IT	Enel	67,864	93
ELI.BE	Elia System Operator	5,682	92
IRE.IT	Iren	3,489	91
FORT.FI	Fortum	20,180	90
HER.IT	Hera	5,580	89
ACE.IT	Acea	4,045	87
RWEX.DE	Rwe (Xet)	17,359	87
IBE.ES	Iberdrola	64,525	86

Disclaimer

Offers the world's leading institutional investment managers a distinct blend of quantitative, fundamental, and technical expertise in global stock buy-and-sell recommendations. Its core method profiles stocks displaying the characteristics of outperformance proven persistent over market history—drawn from the firm's industry-leading database.

William O'Neil + Co., Incorporated is a Registered Investment Advisor with the State of California and certain other states. The firm and its affiliates may now or in the future have positions in the securities mentioned in this or other publications. Charts are intended to be used as tools to assist institutional investors in identifying equity ideas worthy for further review. Charts provide certain current and historical information, but are not a substitute for comprehensive analysis of the individual stocks. For further information about our business and legal policies, please see williamoneil.com/legal.

ANALYST CERTIFICATION

The analysts primarily responsible for preparing this report certify that: (i) the views about the companies and their securities expressed in this report accurately reflect his/ her personal views, and (ii) no part of his/her compensation was, is, or will be, directly or indirectly, related to specific recommendations or views expressed in this report.

NO INVESTMENT BANKING

William O'Neil + Company and its affiliates do not engage in investment banking and do not make a market in any securities. Neither William O'Neil + Company nor any of its affiliates have, during the past 12 months, received any compensation from any of the companies discussed in this report. None of the companies discussed in this report are, or have been during the past 12 months, clients of William O'Neil + Company or its affiliates.

PROPRIETARY POSITIONS

William O'Neil + Company does not maintain proprietary positions in any securities. Employees of William O'Neil + Company and/or affiliates may now or in the future own positions in the companies discussed in this report. As of the end of the month immediately preceding the date of publication of such reports, none of such employees or affiliates beneficially owned 1% or more of the common equity securities of any of the companies discussed in this report. William O'Neil + Co. Incorporated is a Registered Investment Advisor with the State of California and certain other states. Employees of William O'Neil + Company and its affiliates may now or in the future have positions in securities mentioned in this communication. Our content should not be relied upon as the sole factor in determining whether to buy, sell, or hold a stock. For important information about reports, our business, and legal notices please go to www.williamoneil.com/legal.