

European Weekly Summary

August 1, 2019

Key points:

- The Stoxx 600 is in an Uptrend Under Pressure. The clustering of distribution days is concerning. We recommend a cautious approach toward European equities.
- Short-term momentum of defensive sectors, namely Staples, Health Care, and Technology, has improved over the past four weeks.
- Our European Focus List continues to be a source of outperformance. There are 47 stocks on the list after we added Neoen (NEOP.FR) and Lonza (LONN.CH) this week.

Prepared by:

Tristan d'Aboville – Executive Director – Research Analyst,

tristan.daboville@williamoneil.com | Direct: +44 20 3178 7125 | Mobile: +44 77 0344 5260

COMMENTARY

I – Mounting Pressure on European Equities

- The Stoxx 600 is in an Uptrend Under Pressure with six distribution days. The clustering of distribution days has been the main concern since the index was moved to an Uptrend Under Pressure on July 18. The index breached its 21-DMA on heavy volume on July 30. The 50-DMA is the next key support. Should the pullback persist, the next support would be June's low near the 200-DMA. Among the 18 countries we cover, almost half are now under pressure. The average number of distribution days has increased to 4.67, which is four times higher than four weeks ago.
- As weakness in the market has increased, short-term momentum of defensive sectors, namely Staples, Health Care, and Technology, has improved over the past four weeks. On the other hand, Capital Goods' short-term momentum has continued to deteriorate.
- We recommend a cautious approach until we see support come back into the major averages and recommend being very selective in adding new positions. Avoid extended names and focus on stocks breaking out of early-stage bases.

II – The European Focus List

- Our European Focus List continues to be a source of outperformance. Year-to-date, the list is up 25%, outperforming its benchmark iShares DJ Stoxx 600 by almost 1,000bps. Most names remain extended and actionable ideas are scarce. Actionable ideas include:
 - Capital Equipment: Leonardo (LDO.IT), Safran (SGM.FR), Airbus (AIRS.FR), Edenred (EDEN.FR)
 - Cyclical: Puma (PUMX.DE), Richemont (CFR.CH)
 - Staples: Kerry Group (KRZ.IE)

- Health Care: Elekta (ELKB.SE), Lonza (LONN.CH)
- Technology: Cellnex (CLNX.ES)
- Transportation: Dsv (DSV.DK)
- Energy: Neoen (NEOP.FR)
- The list has 47 stocks on it after adding Neoen (NEOP.FR) and Lonza (LONN.CH) this week.
 - Lonza (LONN.CH) – Lonza Group is a contract development and manufacturing organization (CDMO) within the life science industry. The stock was added after breaking out of a stage-one consolidation, turning actionable. Fundamental ratings: EPS Rank 50, SMR Rating C, Composite Rating 81. Technical ratings: RS line is at new high, RS Rating 86, A/D Rating B+.
 - Neoen (NEOP.FR) – France's largest independent producer of renewable energy, with €230M in revenues in 2018. As of June 2019, it had 2.8GW of capacity in operation or under construction across nine countries. The stock was added after initially breaking out of a stage-one cup base in late June. It then provided a secondary entry on a bounce from its 10-WMA last week. While the stock is trading a bit above a pivot range, we still recommend buying as it is a reasonable 10% above the 50-DMA and moving into all-time highs. It has strong fundamentals with a Composite Rating of 99 and an SMR Rating of A. Its EPS Rank is a solid 87, which could improve further based on triple-digit EPS growth expectations this year. Technical ratings are good with an RS Rating of 92 and an A/D Rating of B. Additionally, it has a 3.2 Up/Down Volume ratio, signifying very strong demand for shares.

Sector Heat Map: Average Perf. - Market Cap Average Weighted

(Market Cap > \$0.5BN & ADV > \$1M)

Sectors	5 Days	4 Weeks	8 Weeks	13 Weeks	26 Weeks	52 Weeks
Basic Material	-2.4%	-2.2%	4.8%	-0.9%	7.8%	-3.3%
Capital Equipment	-0.8%	-1.3%	4.4%	-1.0%	11.8%	1.6%
Consumer Cyclical	-1.7%	0.0%	4.9%	0.7%	14.0%	5.3%
Consumer Staple	0.6%	1.0%	5.3%	4.7%	20.3%	12.2%
Energy	-0.8%	-1.4%	2.7%	-2.1%	5.5%	-3.2%
Financial	-1.1%	-1.0%	2.3%	-3.5%	4.0%	-4.1%
Health Care	0.9%	0.4%	7.2%	6.3%	14.4%	8.3%
Retail	-0.8%	1.2%	6.1%	0.0%	11.3%	3.2%
Technology	0.7%	-0.7%	4.9%	0.5%	14.5%	4.4%
Transportation	-2.4%	-2.1%	5.4%	-6.1%	5.0%	-5.6%
Utility	-1.0%	-1.6%	2.2%	2.4%	5.5%	10.7%

Source: William O'Neil + Co.

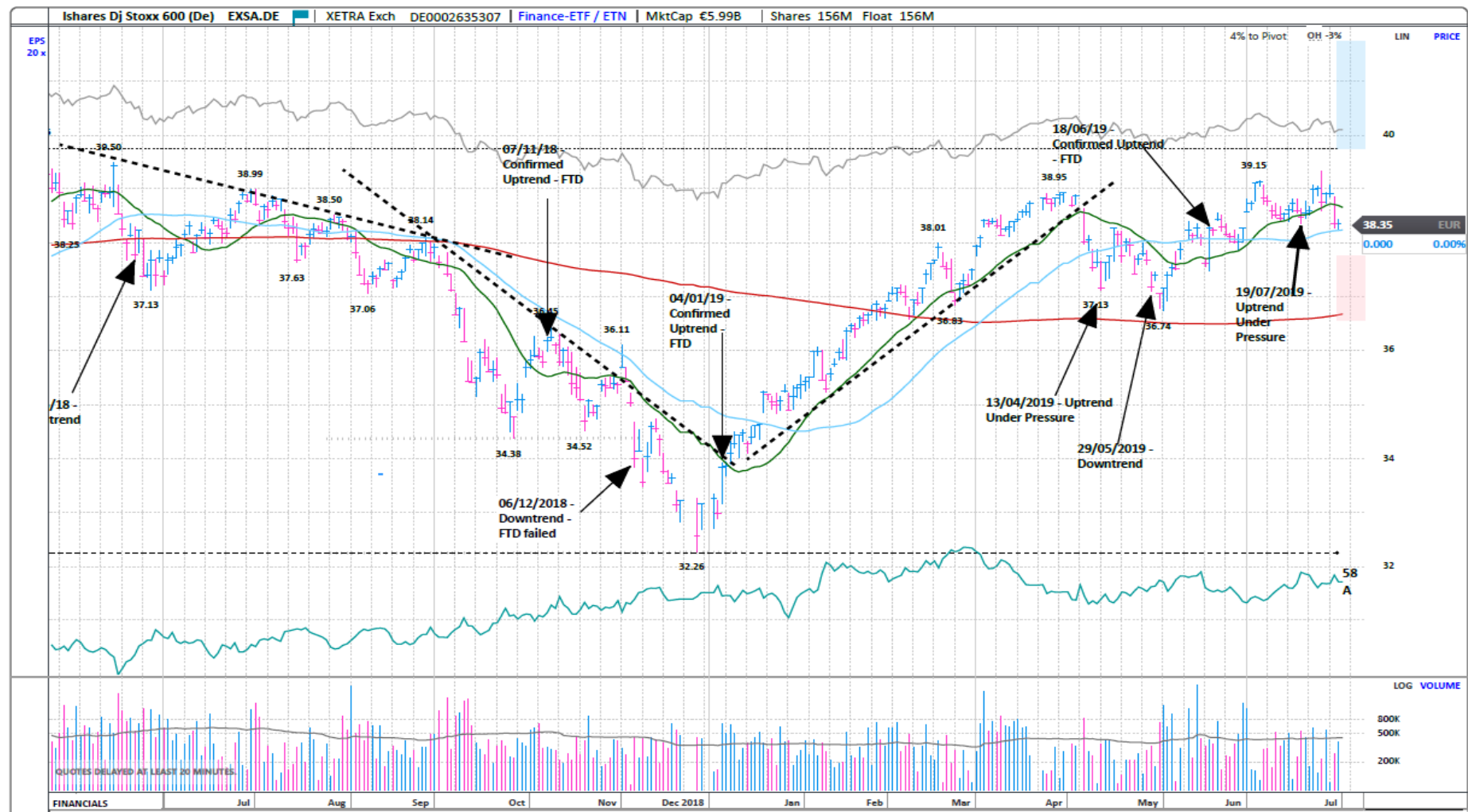
Market Condition

O'Neil Methodology

Country	Market Condition	Distribution Days
Austria	Uptrend	3
Belgium	Uptrend	4
Czech Republic	Rally Attempt	-
Denmark	Under Pressure	7
Finland	Under Pressure	5
France	Uptrend	5
Germany	Under Pressure	6
Greece	Uptrend	3
Ireland	Under Pressure	5
Italy	Uptrend	5
Luxembourg	Uptrend	-
Netherlands	Uptrend	4
Norway	Uptrend	3
Portugal	Under Pressure	6
Spain	Under Pressure	8
Stoxx600	Under Pressure	6
Sweden	Under Pressure	4
Switzerland	Uptrend	6
UK	Uptrend	5
All Europe (Median)		5.00
All Europe (Average)		4.67

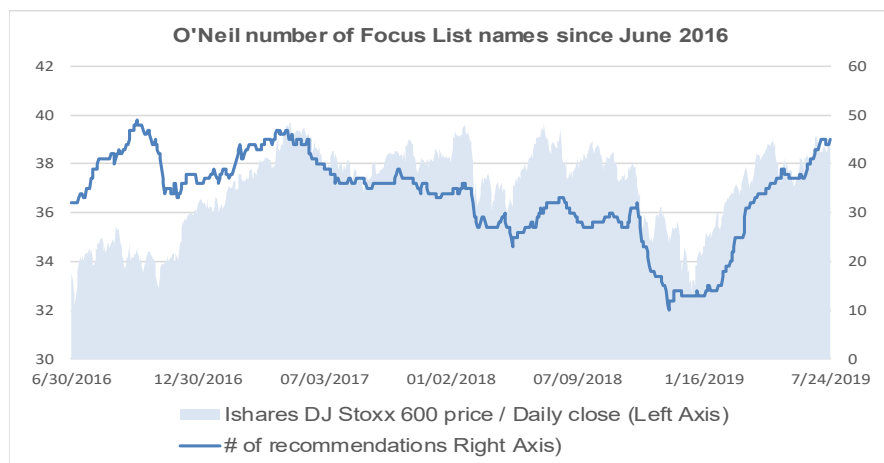
Source: William O'Neil + Co.

Ishares Dj Stoxx 600 (EXSA.DE) – Daily Datagraph

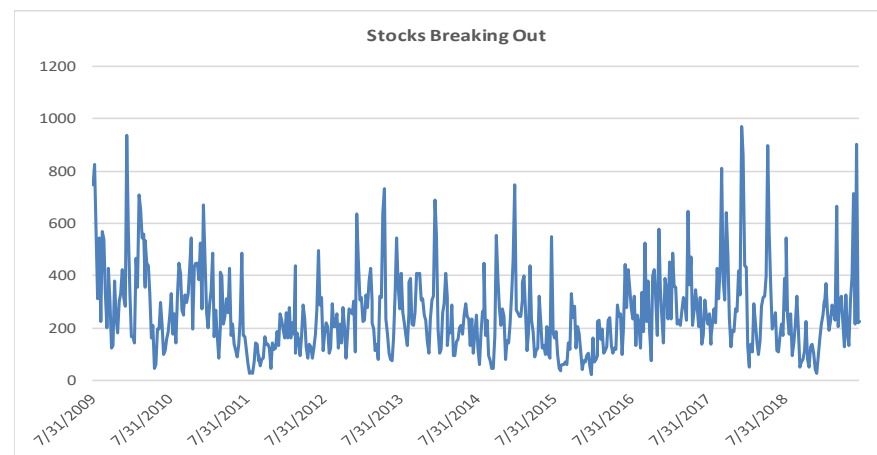


Source: PANARAY/William O'Neil + Co.

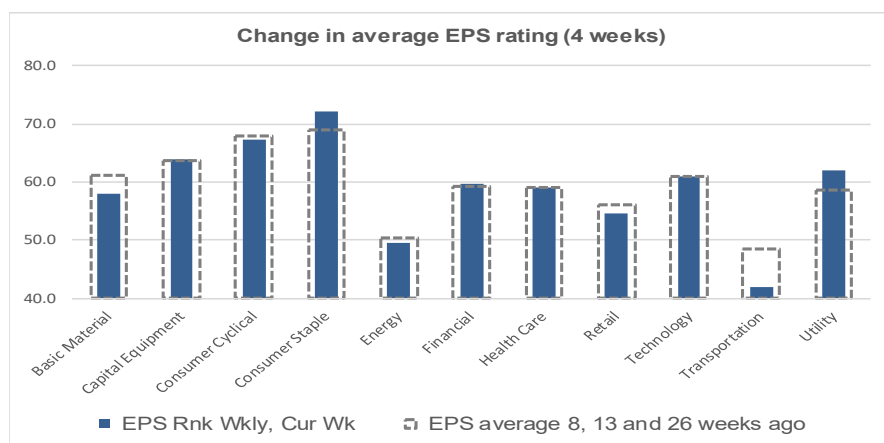
Key Metrics Change: EPS, RS, # of EFL names & Breakouts



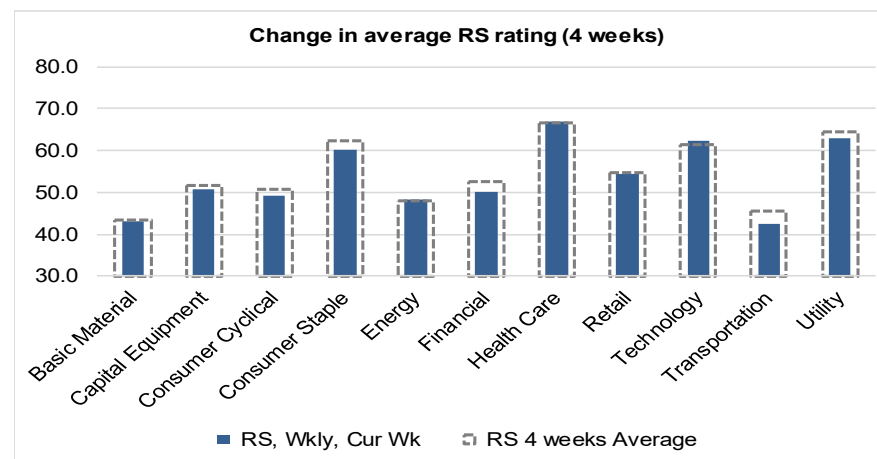
Source: William O'Neil + Co.



Source: William O'Neil + Co.



Source: William O'Neil + Co.



Source: William O'Neil + Co.

How To Read The Sector Card

Outperforming

Stocks breaking out from pivot

We recommend buying stocks at the breakout level. A breakout is a price movement of the security through an identified level of resistance (pivot point) after forming a consolidation base. Our proprietary chart patterns are based on over 50 years of our active research into the behavior of equities.

Laggards

Stocks in which investors are losing interest

Laggards are stocks showing technical weakness. We believe these stocks are laggards relative to their own domestic markets and, if owned as a long, need to be reviewed carefully as they may be vulnerable to further downside risk and underperformance.

European Focus List

O'Neil Recommendations

The European Focus List (EFL) is a proprietary list of long ideas that fit the fundamental and technical criteria of the O'Neil Methodology.

Top Rated

The **Composite Rating** combines the EPS Rank, Relative Strength Rating, Industry Group Rank, SMR Rating, Accumulation/Distribution Rating, and the stock's percent off its 52-week high. More weight is placed on EPS Rank and Relative Strength Ratings. The resulting rating of technical and fundamental factors is compared against all other stocks in the trading country and assigned a rating from 1 to 99, with 99 being the best. A rating of 90 means the stock has outperformed 90% of all other stocks.

Basic Material

Outperforming

Stocks breaking out from consolidation

Symbol	Name	Mkt Val, USD (Mil)	Days from Pivot, Most Rcnt Dly Base
--------	------	-----------------------	---

Laggards

Stocks showing technical weakness

Symbol	Name	Mkt Val, USD (Mil)	A/D, Nm br Rtg, Cur Wk
ERA.FR	Eramet	1,295	-44
SDFX.DE	K + S (Xet)	3,116	-35
ACX.ES	Acerinox 'R'	2,286	-34
NVG.PT	Navigator Comp	2,435	-32
SSBF.SE	Ssab B	1,864	-32
SSAA.SE	Ssab A	872	-27
VCT.FR	Vicat	2,037	-24

European Focus List

O'Neil Recommendations

Symbol	Name	Mkt Val, USD (Mil)	Focus List Since
GIVN.CH	Givaudan 'N'	24,680	21/11/18
IMCD.NL	Imcd Group	4,679	4/3/19
SIKA.CH	Sika	20,623	25/4/19

Top Rated

Stocks Displaying the Best Composite Rating

Symbol	Name	Mkt Val, USD (Mil)	Composite Rating
IMCD.NL	Imcd Group	4,679	98
FXPO.GB	Ferrexpo	1,858	97
EVR.GB	Evraz	11,575	94
HGM.GB	Highland Gold Mining	972	94
KEMR.FI	Kemira	2,311	93
POLY.GB	Polymetal International	5,732	91
RIO.GB	Rio Tinto	72,376	88
AIR.FR	Air Liquide	59,679	86
EMSN.CH	Ems-Chemie 'N'	14,718	85
YARANO	Yara International	12,960	83

Capital Equipment

Outperforming

Stocks breaking out from consolidation

Symbol	Name	Mkt Val, USD (Mil)	Days from Pivot, Most Rcnt Dly Base
--------	------	-----------------------	---

Top Rated

Stocks Displaying the Best Composite Rating

Symbol	Name	Mkt Val, USD (Mil)	Composite Rating
RWS.GB	Rws Holdings	2,177	99
ROFR.FR	Teleperformance	12,367	99
FOUR.GB	4imprint Group	960	98
HLMA.GB	Halma	9,252	98
AADX.DE	Amadeus Fire (Xet)	709	97
VAR1X.DE	Varta (Xet)	2,963	97
AHT.GB	Ashtead Group	12,894	96
EPIB.SE	Epiroc B	4,090	96
HSV.GB	Homeserve	4,675	96
OXIG.GB	Oxford Instruments	916	96

Laggards

Stocks showing technical weakness

Symbol	Name	Mkt Val, USD (Mil)	A/D, Nmbr Rtg, Cur Wk
MT.IT	Maire Tecnimont	800	-48
KCR1.FI	Konecranes	2,337	-46
BFSAX.DE	Befesa (Xet)	1,212	-43
OERL.CH	Oc Oerlikon Corporator	3,665	-43
JENX.DE	Jenoptik (Xet)	1,616	-41
BUCN.CH	Bucher Industries	3,081	-39
FIN.CH	Georg Fischer	3,563	-39
KRNX.DE	Krones (Xet)	1,781	-37
MANX.DE	Man (Xet)	7,739	-37
RIEN.CH	Rieter Holding 'R'	616	-36
WACX.DE	Wacker Neuson (Xet)	1,412	-36
CERV.IT	Cerved Group	1,554	-33
SNR.GB	Senior	1,031	-31
BBY.GB	Balfour Beatty	1,740	-30
CGCB.FI	Cargotec 'B'	1,654	-30
DUEX.DE	Duerr (Xet)	2,078	-28
VALM.FI	Valmet	2,939	-28
ISS.DK	Iss	5,242	-27
VIS.ES	Viscofan	2,295	-26
CFEB.BE	Aannemingsmaatschap	2,244	-24
BOBNN.CH	Bobst Group	829	-24
BOY.GB	Bodycote	1,727	-22
DEZX.DE	Deutz (Xet)	828	-22
JUN3X.DE	Jungheinrich Pfs. (Xet)	1,090	-22

European Focus List

O'Neil Recommendations

Symbol	Name	Mkt Val, USD (Mil)	Focus List Since
AIRS.FR	Airbus	110,702	18/3/19
EDEN.FR	Edenred	12,305	23/1/19
HLMA.GB	Halma	9,252	4/3/19
HSV.GB	Homeserve	4,675	3/7/18
LDO.IT	Leonardo	7,107	19/6/19
SGM.FR	Safran	59,151	4/4/19
SAXX.DE	Stroeer (Xet)	4,515	3/7/19
ROFR.FR	Teleperformance	12,367	13/11/15

Consumer Cyclical

Outperforming

Stocks breaking out from consolidation

Symbol	Name	Mkt Val, USD (Mil)	Days from Pivot, Most Rcnt Dly Base
BKG.GB	Berkeley Group Hdg.(Tr	6,025	4

Laggards

Stocks showing technical weakness

Symbol	Name	Mkt Val, USD (Mil)	A/D, Nm br Rtg, Cur Wk
TKTT.FR	Tarkett	1,104	-50
TL5.ES	Mediaset Espana Com	1,940	-49
A3M.ES	Atresmedia Corp	886	-42
TOD.IT	Tod's	1,658	-41
DWNIX.DE	Deutsche Wohnen (Xet)	13,279	-40
PSMX.DE	Prosiebensat 1 (Xet) Me	2,980	-40
AML.GB	Aston Martin Lagonda G	1,391	-34
CCL.GB	Carnival	7,348	-32
MMB.FR	Lagardere Groupe	2,993	-32
CINE.GB	Cineworld Group	4,286	-30
MOTB.SE	Modern Times Group M	627	-30
BETS.SE	Betsson B	653	-24
MEL.ES	Melia Hotels Intl.	2,040	-24

European Focus List

O'Neil Recommendations

Symbol	Name	Mkt Val, USD (Mil)	Focus List Since
LVMH.FR	Lvmh	211,211	19/3/19
NIBE.SE	Nibe Industrier B	6,348	6/2/19
PUMX.DE	Puma (Xet)	9,803	20/3/18
CFR.CH	Richemont N	45,029	24/7/19
SEB.FR	Seb	8,122	1/3/19
THQ.SE	Thq Nordic	2,228	19/3/19

Top Rated

Stocks Displaying the Best Composite Rating

Symbol	Name	Mkt Val, USD (Mil)	Composite Rating
ABDP.GB	Ab Dynamics	697	99
EVOG.SE	Evolution Gaming Grou	3,995	99
ADXS.DE	Adidas (Xet)	62,322	98
GAW.GB	Games Workshop	1,805	98
INF.GB	Informa	13,398	98
NIBE.SE	Nibe Industrier B	6,348	98
PUMX.DE	Puma (Xet)	9,803	98
THQ.SE	Thq Nordic	2,228	98
LIAB.SE	Lindab International	906	97
MSLH.GB	Marshalls	1,558	97

Consumer Staple

Outperforming

Stocks breaking out from consolidation

Symbol	Name	Mkt Val, USD (Mil)	Days from Pivot, Most Rcnt Dly Base
--------	------	-----------------------	---

Laggards

Stocks showing technical weakness

Symbol	Name	Mkt Val, USD (Mil)	A/D, Nm br Rtg, Cur Wk
ARYN.CH	Aryza	832	-39
CHR.DK	Christian Hansen Holdi	11,607	-37
SWMASE	Swedish Match	6,553	-36
STG.DK	Scandinavian Tobacco	1,060	-35
LSG.NO	Leroy Seafood Group	3,799	-22

European Focus List

O'Neil Recommendations

Symbol	Name	Mkt Val, USD (Mil)	Focus List Since
AAK.SE	Aak	5,234	14/5/19
CPR.IT	Davide Campari Milano	10,890	16/11/18
DGE.GB	Diageo	100,021	21/12/18
GSF.NO	Grieg Seafood	1,605	20/9/18
KRZ.IE	Kerry Group 'A'	20,731	7/5/19
MHG.NO	Mowi	12,522	5/10/18

Top Rated

Stocks Displaying the Best Composite Rating

Symbol	Name	Mkt Val, USD (Mil)	Composite Rating
ITP.FR	Interparfums	2,255	98
GCC.IE	C&C Group	1,423	97
MHG.NO	Mowi	12,522	97
RCO.FR	Remy Cointreau	7,477	95
AAK.SE	Aak	5,234	94
DGE.GB	Diageo	100,021	94
GSF.NO	Grieg Seafood	1,605	94
ABI.BE	Anheuser-Busch Inbev	171,700	93
RBR.DK	Royal Unibrew	3,761	93
ESSI.SE	Essity B	19,166	91

Energy

Outperforming

Stocks breaking out from consolidation

Symbol	Name	Mkt Val, USD (Mil)	Days from Pivot, Most Rcnt Dly Base
--------	------	-----------------------	---

Laggards

Stocks showing technical weakness

Symbol	Name	Mkt Val, USD (Mil)	A/D, Nmbr Rtg, Cur Wk
FUR.NL	Fugro	697	-43
OCY.NO	Ocean Yield	953	-35
TAL.FR	Total	139,661	-21

European Focus List

O'Neil Recommendations

Symbol	Name	Mkt Val, USD (Mil)	Focus List Since
DEN.DK	Orsted	38,624	21/11/18

Top Rated

Stocks Displaying the Best Composite Rating

Symbol	Name	Mkt Val, USD (Mil)	Composite Rating
EDPR.PT	Edp Renovaveis	9,013	99
FKR.IT	Falck Renewables	1,358	97
ABIO.FR	Albioma	840	94
SEM.ES	Solaria Energia Y Medic	748	93
BON.NO	Bonheur	872	92
SBMO.NL	Sbm Offshore	4,111	90
DEN.DK	Orsted	38,624	89
RUI.FR	Rubis	5,672	87
CAPX.DE	Encavis Ag	1,068	86
NEST.FI	Neste	25,686	85

Financial

Outperforming

Stocks breaking out from consolidation

Symbol	Name	Mkt Val, USD (Mil)	Days from Pivot, Most Rcnt Dly Base
ADEA.NO	Adevinta A	3,484	1
SVS.GB	Savills	1,666	4
SIR.GB	Secure Income Reit	1,657	4

Laggards

Stocks showing technical weakness

Symbol	Name	Mkt Val, USD (Mil)	A/D, Nmbr Rtg, Cur Wk
NDASE	Nordea Bank	40,892	-52
BKIA.ES	Bankia	6,126	-51
CSH.GB	Civitas Social Housing	633	-50
AT1X.DE	Aroundtown (Xet)	9,882	-47
FCBK.IT	Fincobank Spa	6,097	-42
AR4X.DE	Aurelius Se & Co. (Xet) I	1,241	-41
DEQX.DE	Deutsche Euroshop (Xe	1,703	-41
LLOY.GB	Lloyds Banking Group	46,024	-41
BIRG.IE	Bank Of Ireland Group	4,822	-39
CABK.ES	Caixabank	14,885	-39
A5G.IE	Aib Group	9,369	-37
HMSO.GB	Hammerson	2,011	-36
WH.NL	Wereldhave	864	-36
NOFI.NO	Norwegian Finans Hold	1,310	-34
BBVA.ES	Bbv.Argentaria	34,149	-33
UBSG.CH	Ubs Group	43,249	-32
DAB.DK	Danske Bank	12,888	-30
INTU.GB	Intu Properties	794	-30
UBL.NL	Wfd Unibail Rodamco S	18,635	-30
ISP.IT	Intesa Sanpaolo	38,221	-29
LBK.ES	Liberbank	1,148	-29
SWED.SE	Swedbank A	15,600	-29
UNIQ.AT	Uniqa Insu Gr Ag	2,787	-29
ABN.NL	Abn Amro Bank	18,798	-28

European Focus List

O'Neil Recommendations

Symbol	Name	Mkt Val, USD (Mil)	Focus List Since
ADYE.NL	Adyen	22,639	27/2/19
LSE.GB	London Stock Ex.Group	28,375	19/2/19
WLN.FR	Worldline	13,178	11/6/19

Top Rated

Stocks Displaying the Best Composite Rating

Symbol	Name	Mkt Val, USD (Mil)	Composite Rating
HYQX.DE	Hypoport Finance (Xet)	1,768	99
INGE.FR	Ingenico Group	6,101	99
IRES.IE	Irish Resd.Pptys Reit	1,011	99
LSE.GB	London Stock Ex.Group	28,375	99
AJB.GB	AJ Bell Plc	2,083	98
LIFC.SE	Lifco B	4,379	98
MONT.BE	Montea Comm	1,344	98
SCH.GB	Safecharge Intl.Group	844	98
ENX.FR	Euronext	5,436	97
EXP.N.GB	Experian	27,892	97

Health Care

Outperforming

Stocks breaking out from consolidation

Symbol	Name	Mkt Val, USD (Mil)	Days from Pivot, Most Rcnt Dly Base
--------	------	-----------------------	---

Laggards

Stocks showing technical weakness

Symbol	Name	Mkt Val, USD (Mil)	A/D, Nm br Rtg, Cur Wk
FAGR.BE	Fagron	1,201	-29
LUN.DK	H Lundbeck	7,762	-28
BION.CH	Bb Biotech N	3,657	-27
WDH.DK	Demant	7,291	-25

European Focus List

O'Neil Recommendations

Symbol	Name	Mkt Val, USD (Mil)	Focus List Since
AFX.DE	Carl Zeiss Meditec (Xet)	9,884	8/1/19
COL.DK	Coloplast B	23,270	26/3/19
ELKB.SE	Elekta B	5,283	26/6/19
GSN.DK	Gn Store Nord	6,812	27/2/19
KORI.FR	Korian	3,290	18/3/19
LONN.CH	Lonza Group	25,673	29/7/19
SRT3X.DE	Sartorius Pref. (Xet)	7,691	1/4/19

Top Rated

Stocks Displaying the Best Composite Rating

Symbol	Name	Mkt Val, USD (Mil)	Composite Rating
BTG.GB	Btg	3,977	99
CEVI.SE	Cellavision	975	99
FAE.ES	Faes Farma	1,386	99
SRT3X.DE	Sartorius Pref. (Xet)	7,691	99
DIM.FR	Sartorius Stedim Biotec	14,852	99
SN.GB	Smith & Nephew	19,914	99
AZN.GB	Astrazeneca	113,428	98
OSS.DK	Ossur	2,838	98
CVSG.GB	Cvs Group	796	97
REC.IT	Recordati Indua.Chimic	9,437	97

Retail

Outperforming

Stocks breaking out from consolidation

Symbol	Name	Mkt Val, USD (Mil)	Days from Pivot, Most Rcnt Dly Base
--------	------	-----------------------	---

Laggards

Stocks showing technical weakness

Symbol	Name	Mkt Val, USD (Mil)	A/D, Nm br Rtg, Cur Wk
SPD.GB	Sports Direct Intl.	1,481	-44
FNAC.FR	Fnac Darty	1,880	-40
MARR.IT	Marr	1,444	-31
COL.BE	Colruyt	7,251	-29

European Focus List

O'Neil Recommendations

Symbol	Name	Mkt Val, USD (Mil)	Focus List Since
DNLM.GB	Dunelm Group	2,287	20/6/19
GRG.GB	Greggs	2,770	14/5/19

Top Rated

Stocks Displaying the Best Composite Rating

Symbol	Name	Mkt Val, USD (Mil)	Composite Rating
AMP.IT	Amplifon	5,616	99
BOO.GB	Boohoo Group	3,404	99
JD.GB	Jd Sports Fashion	7,744	99
FERG.GB	Ferguson Plc	17,371	96
MAB.GB	Mitchells & Butlers	1,596	96
BCA.GB	Bca Marketplace	2,324	95
EIG.GB	Ei Group	1,507	95
KESK.FI	Kesko B	4,169	95
GRG.GB	Greggs	2,770	94
ICASE	Ica Gruppen	8,999	94

Technology

Outperforming

Stocks breaking out from consolidation

Symbol	Name	Mkt Val, USD (Mil)	Days from Pivot, Most Rcnt Dly Base
CCC.GB	Computacenter	2,132	2
DHERX.DE	Delivery Hero Ag (Xet)	8,937	3
NOD.NO	Nordic Semiconductor	906	3

Laggards

Stocks showing technical weakness

Symbol	Name	Mkt Val, USD (Mil)	A/D, Nm br Rtg, Cur Wk
O2DX.DE	Telefonica Dtl. (Xet) Hld	7,495	-56
FDM.GB	Fdm Group	1,096	-42
SOWX.DE	Software (Xet)	2,061	-34
ILD.FR	Iliad	6,176	-30
IDR.ES	Indra Sistemas	1,528	-29
TIE1.FI	Tieto Oyj	1,904	-27
NEO.FR	Neopost	700	-22
SMS.GB	Smart Metering System:	693	-21

European Focus List

O'Neil Recommendations

Symbol	Name	Mkt Val, USD (Mil)	Focus List Since
ASML.NL	Asml Holding	96,118	15/3/19
AVV.GB	Aveva Group	7,885	18/3/19
CLNX.ES	Cellnex Telecom	11,270	26/7/19
DSY.FR	Dassault Systemes	40,401	13/2/19
INW.IT	Infrastrutture Wireless It	6,133	2/7/19
NEMX.DE	Nemetschek (Xet)	6,510	13/2/19
SOI.FR	Soitec	3,306	25/2/19
TEMN.CH	Temenos N	12,910	17/4/19

Top Rated

Stocks Displaying the Best Composite Rating

Symbol	Name	Mkt Val, USD (Mil)	Composite Rating
ASIN.NL	Asm International	4,228	99
AVST.GB	Avast	4,021	99
COPX.DE	Compugroup Medical (Xet)	4,144	99
DSY.FR	Dassault Systemes	40,401	99
FORT.SE	Fortnox Ab	878	99
KWS.GB	Keywords Studios	1,317	99
NEMX.DE	Nemetschek (Xet)	6,510	99
NGP.DK	Netcompany Group	1,976	99
ALTE.FR	Alten	4,232	98
BC8X.DE	Bechtle (Xet)	4,716	98

Transportation

Outperforming

Stocks breaking out from consolidation

Symbol	Name	Mkt Val, USD (Mil)	Days from Pivot, Most Rcnt Dly Base
--------	------	-----------------------	---

Laggards

Stocks showing technical weakness

Symbol	Name	Mkt Val, USD (Mil)	A/D, Nm br Rtg, Cur Wk
LHAX.DE	Deutsche Lufthansa (Xet)	7,522	-54
RYA.GB	Ryanair Hdq. (Lon)	12,109	-51
FNNA.FI	Finnair	909	-40
TLGO.ES	Talgo	741	-40
LOGI.ES	Logista Hold	2,791	-32
OES.AT	Osterreichische Post	2,272	-25
RMG.GB	Royal Mail	2,568	-22

European Focus List

O'Neil Recommendations

Symbol	Name	Mkt Val, USD (Mil)	Focus List Since
DSV.DK	Dsv'B'	17,888	9/7/19

Top Rated

Stocks Displaying the Best Composite Rating

Symbol	Name	Mkt Val, USD (Mil)	Composite Rating
HLAX.DE	Hapag Lloyd (Xet)	7,430	99
DSV.DK	Dsv'B'	17,888	96
PST.IT	Poste Italiane	14,049	93
GOG.GB	Go-Ahead Group	1,128	87
CAF.ES	Const Y Auxiliar De Ferr	1,563	74
PWTN.CH	Panalpina Welttranspor	5,393	66
WIZZ.GB	Wizz Air Holdings	3,150	64
DPWX.DE	Deutsche Post (Xet)	40,537	63
CKN.GB	Clarkson	956	59
KNIN.CH	Kuehne Und Nagel Inte	17,788	55

Utility

Outperforming

Stocks breaking out from consolidation

Symbol	Name	Mkt Val, USD (Mil)	Days from Pivot, Most Rcnt Dly Base
--------	------	-----------------------	---

Laggards

Stocks showing technical weakness

Symbol	Name	Mkt Val, USD (Mil)	A/D, Nm br Rtg, Cur Wk
REE.ES	Red Electrica	10,302	-37

European Focus List

O'Neil Recommendations

Symbol	Name	Mkt Val, USD (Mil)	Focus List Since
TEP.GB	Telecom Plus	1,279	28/11/18

Top Rated

Stocks Displaying the Best Composite Rating

Symbol	Name	Mkt Val, USD (Mil)	Composite Rating
VERB.AT	Verbund	9,591	99
ENEL.IT	Enel	70,174	96
VIE.FR	Veolia Environ	14,396	92
ACE.IT	Acea	4,022	90
ASCO.IT	Ascopiave	1,074	89
FORT.FI	Fortum	20,573	89
ELI.BE	Elia System Operator	5,259	88
IBE.ES	Iberdrola	60,709	87
IG.IT	Italgas	5,152	87
HER.IT	Hera	5,589	84

Disclaimer

Offers the world's leading institutional investment managers a distinct blend of quantitative, fundamental, and technical expertise in global stock buy-and-sell recommendations. Its core method profiles stocks displaying the characteristics of outperformance proven persistent over market history—drawn from the firm's industry-leading database.

William O'Neil + Co., Incorporated is a Registered Investment Advisor with the State of California and certain other states. The firm and its affiliates may now or in the future have positions in the securities mentioned in this or other publications. Charts are intended to be used as tools to assist institutional investors in identifying equity ideas worthy for further review. Charts provide certain current and historical information, but are not a substitute for comprehensive analysis of the individual stocks. For further information about our business and legal policies, please see williamoneil.com/legal.

ANALYST CERTIFICATION

The analysts primarily responsible for preparing this report certify that: (i) the views about the companies and their securities expressed in this report accurately reflect his/ her personal views, and (ii) no part of his/her compensation was, is, or will be, directly or indirectly, related to specific recommendations or views expressed in this report.

NO INVESTMENT BANKING

William O'Neil + Company and its affiliates do not engage in investment banking and do not make a market in any securities. Neither William O'Neil + Company nor any of its affiliates have, during the past 12 months, received any compensation from any of the companies discussed in this report. None of the companies discussed in this report are, or have been during the past 12 months, clients of William O'Neil + Company or its affiliates.

PROPRIETARY POSITIONS

William O'Neil + Company does not maintain proprietary positions in any securities. Employees of William O'Neil + Company and/or affiliates may now or in the future own positions in the companies discussed in this report. As of the end of the month immediately preceding the date of publication of such reports, none of such employees or affiliates beneficially owned 1% or more of the common equity securities of any of the companies discussed in this report. William O'Neil + Co. Incorporated is a Registered Investment Advisor with the State of California and certain other states. Employees of William O'Neil + Company and its affiliates may now or in the future have positions in securities mentioned in this communication. Our content should not be relied upon as the sole factor in determining whether to buy, sell, or hold a stock. For important information about reports, our business, and legal notices please go to www.williamoneil.com/legal.