

# Weekly European Sector Review

April 04, 2019

*Key points:*

- *The Ishares Dj Stoxx 600 is in a Confirmed Uptrend with three distribution days. We recommend adding to positions in names that are breaking out of consolidation.*
- *Leadership is emerging among Basic Material and Capital Equipment stocks.*
- *We continue to add names to our European Focus List, which reflects our current positive view of European markets.*
- *Many names from the EFL are actionable. Focus this week on HomeServe (HSV.GB).*

Prepared by:

Tristan d'Aboville – Executive Director – Research Analyst, [tristan.daboville@williamoneil.com](mailto:tristan.daboville@williamoneil.com)

## COMMENTARY

### Europe: Leadership Emerging in Cap Equipment and Basic Material

- The Ishares DJ Stoxx 600 has been back in a Confirmed Uptrend since March 26, when it crossed above its 21-DMA. Action remains constructive overall, with the number of distribution days dropping to three. Since the follow-through day on October 4, the 21-DMA remains the key support level of this uptrend. Next resistance is at 38.99 (high of July 2018), 10% above the current level.
- All European market indices, with the exception of Finland and Norway, followed a similar path and are now in a Confirmed Uptrend. The average number of distribution days in European markets dropped to 3.2 from greater than 4 two weeks ago.
- Despite the weak macroeconomic environment, we recommend adding to positions in names that are breaking out of constructive patterns, while avoiding chasing stocks that are too extended.
- Leadership emerged this week in Capital Equipment (Huhtamaki, Safran, Interroll, Jenoptik, Schneider Electric – see page 10) and Basic Material (Air Liquide, Anglo American, Rio Tinto – see page 9).

### European Focus List – Many Names at Buy Points

- The number of ideas on our European Focus List continues to increase, reflecting the emergence of leadership. This week we added Sartorius (SRT3X.DE) and Safran (SGM.FR).

- Many names from the list are actionable, including Adyen (ADYE.NL), Coloplast (COL.DK), Dassault Systemes (DSY.FR), Imcd (IMCD.NL), HomeServe (HSV.GB), Puma (PUMX.DE), Teleperformance (ROFR.FR), Soitec (SOI.FR), and Sartorius (SRT3X.DE).
- Extended names include Nemetschek (NEMX.DE), DNO (DNO.NO), Davide Campari (CPR.IT), Seb (SEB.FR), Edenred (EDEN.FR), Halma (HLMA.GB), Nibe (NIBE.SE), and Vitrolife (VITR.SE).
- Focus this week on HomeServe (HSV.GB) – see details on the next page.

### Sector Heat Map: Average Perf. - Market Cap Average Weighted (Market Cap > \$1BN & ADV > \$1M)

Sectors	5 Days	4 Weeks	8 Weeks	13 Weeks	26 Weeks	52 Weeks
Basic Material	5.0%	3.2%	6.4%	17.3%	-0.8%	5.5%
Capital Equipment	4.5%	3.6%	7.8%	18.7%	-0.6%	5.9%
Consumer Cyclical	4.3%	4.3%	8.4%	21.5%	3.2%	4.5%
Consumer Staple	0.6%	4.0%	9.1%	16.9%	7.5%	11.4%
Energy	2.4%	2.6%	3.4%	11.8%	-3.3%	12.1%
Financial	4.6%	3.3%	6.3%	14.6%	-0.6%	-2.9%
Health Care	1.1%	1.8%	5.0%	10.7%	2.8%	16.2%
Retail	3.5%	3.9%	8.6%	21.3%	7.4%	15.1%
Technology	3.5%	5.4%	7.6%	14.9%	3.3%	10.2%
Transportation	3.6%	3.1%	4.0%	15.1%	1.0%	-4.9%
Utility	-0.1%	2.0%	1.4%	8.8%	10.0%	14.7%

Source: William O'Neil + Co.

**HomeServe (HSV.GB) shares are actionable (buyable), breaking out of a 27-week cup base after the release of its FY19 update this week. Its profit-before-tax is expected to be in the upper range of consensus expectations (£159.5M–161.7M).**

- HomeServe provides home repair, improvement, heating installation, and emergency services to more than 8.4M customers globally through more than 570 utility partnerships.
- The company has a market cap of £3.6B and divides its business into four global lines: membership, a subscription-based home assistance plan covering plumbing, heating, electrical, pest control, and technology services; home experts, an online review and booking platform for home repairs and improvements; HVAC, which includes a wide range of heating, ventilation, and air conditioning services; and smart home, which develops and distributes home automation technology.
- In the U.K., HomeServe sells emergency repair policies to about 8% of households (2.0M customers as of March 2019), while British Gas covers 20% of households.
- The Company's U.K. business is stable, maintains a healthy operating margin, and remains the core profit contributor (40% of adjusted operating profit in FY18).
- Growth opportunity still exists in the U.S. (31% of revenue), where HomeServe's penetration remains low.
- If the Company succeeds in replicating the same level of penetration in the U.S. as it has in the U.K. (8%), it would more than double its current customer base of 4M to 10M and would generate about \$1B of

revenue in the region (assuming \$100 in annual revenue per customer, a target set by the management).

- In the first half of 2019 (fiscal year ending March), the Company's North America business grew 14% in constant currency. Operating margin in the region has consistently improved toward the Company's target of 20% (17.2% in FY18).
- If HomeServe achieved \$1B in U.S. revenue by 2024 (18% revenue CAGR = organic + acquisitions), assuming that growth in the U.K. remains subdued (mature market) and in the mid-single digits in other markets (cautious assumptions), revenue would reach £1.5B by 2024. Assuming an operating margin of 20% (17% in FY18), HomeServe would deliver circa £300M of operating profit, almost twice 2019 expectations. At 15x exit multiple, compound annual return would be 5.3% (excluding dividend yield of 1.9%); at 20x, it would be 13%; at 25x, it would be 20%. Shares currently trade at 27x one-year forward EV/EBIT.
- We not only like the Company's growth story, but it has an attractive defensive profile thanks to its revenue retention rate of greater than 80%, which brings visibility to top- and bottom-line growth (reflected by its O'Neil revenue stability factor of 3, 1 being the best and 99 the worst, which measures three- and five-year earnings growth stability).
- Free cash flow to sales ratio has been consistently greater than 13% in the past three years, along with ROE greater than 20%. Balance sheet remains under control.
- O'Neil Ratings: EPS Rank of 81 (99 being the best) reflects a strong earnings growth profile. SMR Rating of B (A being the best, E the worst) = sales growth, margin expansion, ROE.

+ 2% from Pivot in 1 Week

Europe Long +18.38% in 39.3 WKS

OH	-5%	LOG (Fixed)	PRICE
----	-----	-------------	-------

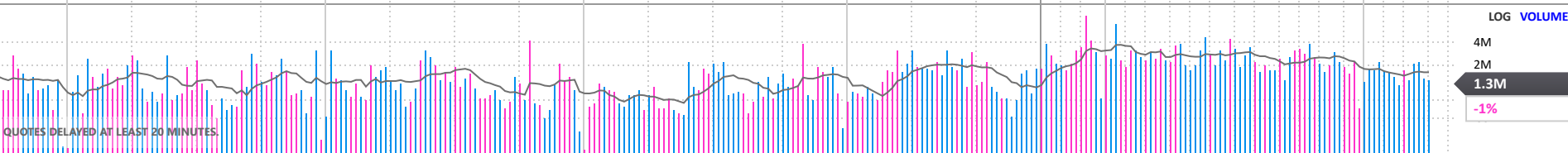
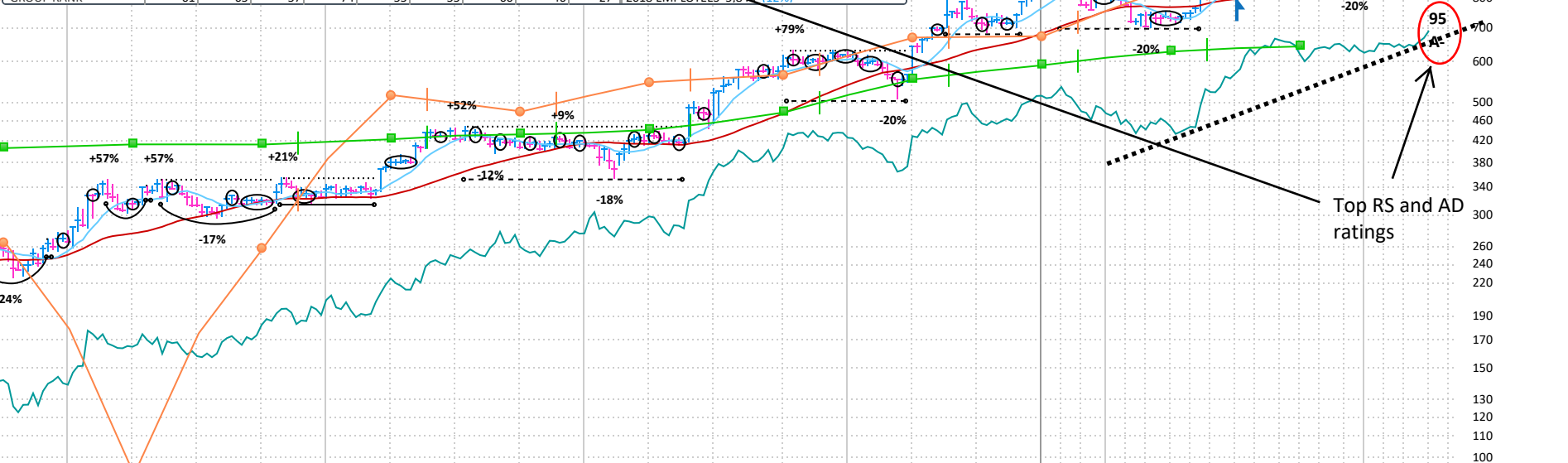
improving margin and ROE

Shares breaking out of a 27-weeks cup to new high.

ANNUAL - MAR END	2010	2011	2012	2013	2014	2015	2016	2017	2018	2019 Estimate	2020 Estimate
EPS GBX	10.43	25.85	38.12	13.91	3.31	18.49	19.62	24.01	30.20	36.60	40.60
PAY FLOW/SHR GBX	24.65	34.47	27.55	30.45	9.81	26.67	34.25	42.43	53.9	61.60	68.60
PRETAX CASH %	27%	21%	25%	12%	4%	13%	13%	13%	14%	16%-18%	21% (3 Stability)
RETURN ON EQUITY %	14%	30%	35%	11%	3%	16%	18%	22%	21%	2014-18 20% (24 Stability)	2014-18 20% (24 Stability)
SALES % CHANGE	21%	27%	14%	2%	4%	3%	8%	24%	5%	COMP RATING 98	SMR RATING 98
SALES (MILL) GBX	37K	47K	53K	55K	57K	58K	63K	79K	90K	INV T/O 83.6x85	2016-18 DEBT % 62%
WEEKLY	8 Feb	15 Feb	22 Feb	1 Mar	8 Mar	15 Mar	22 Mar	29 Mar	3 Apr	TAX RATE 2016-18 25%	2016-18 TAX RATE 25%
DATAGRAPH RATING	64	59	59	60	59	63	62	63	65	BACKLOG 2016-18 --	2016-18 BACKLOG 25%
AVG DAILY VOL ('000)	360	343	329	331	320	332	339	332	321	R & D --	BK VAL 6.24x '18 --
UP DOWN VOLUME	1.0	1.2	1.6	1.7	1.9	1.6	1.6	1.7	1.9	DIV GBX 19.60 (1.9%)	DIV GR RT +11% (8)
ACCUM/DIST RATING	42	35	36	30	36	40	29	36	44	BETA 1.08(10.00)	ALPHA 0.12 (0.09)
RELATIVE STRENGTH	92	91	89	89	90	93	93	94	95	2019 EMPLOYEES 5,746	2020 EMPLOYEES 5,746
GROUP RANK	61	65	57	74	55	55	60	46	27		

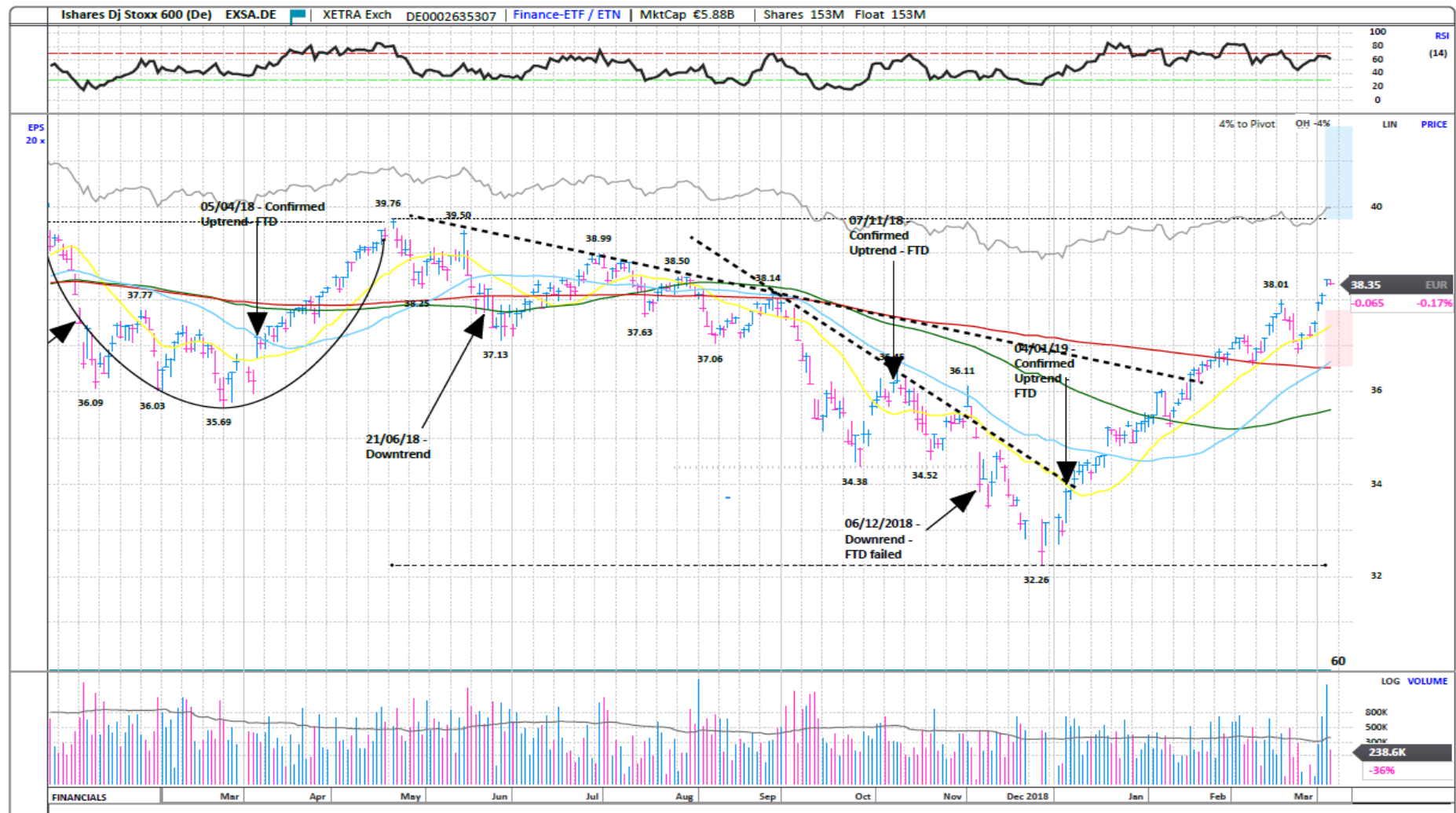
Top Composite rating,  
a blend of fundamental and  
technical characteristics

Top RS and AD ratings



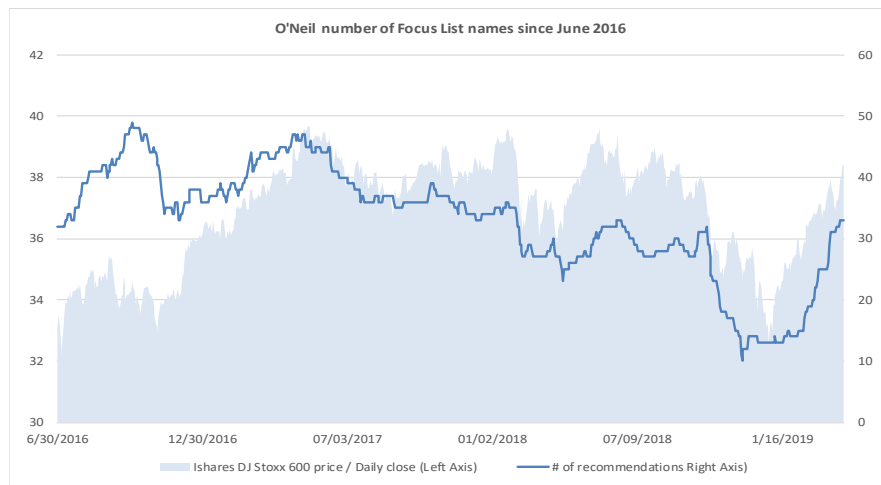
FINANCIALS	Jun 14	Sep 14	Dec 14	Mar 15	Jun 15	Sep 15	Dec 15	Mar 16	Jun 16	Sep 16	Dec 16	Mar 17	Jun 17	Sep 17	Dec 17	Mar 18	Jun 18	Sep 18	Dec 18	Mar 19		P/E	36
EPS (GBX)		6.07		12.42		4.77		14.86		5.42		18.59		5.55		24.65		4.62				2019 Est.: 29.6	
EPS % CHANGE		+4,569%		+291%		-21%		+20%		+14%		+25%		+2%		+33%		-17%				2020 Est.: 26.7	
SALES (MIL GBX)		24,170.0		34,250.0		26,230.0		37,090.0		31,430.0		47,070.0		36,600.0		53,370.0		40,430.0				5-yr High: 36	
SALES % CHANGE		0%		+5%		+9%		+8%		+20%		+27%		+16%		+13%		+10%				5-yr Low: 17	
MARGIN AFTER TAX		+7.6%		+11.0%		+6.1%		+12.3%		+5.3%		+12.3%		+4.4%		+15.0%		+3.8%				vs Ind. Avg: 0.8x	
P/E LOW-HIGH	49-56	32-36	23-26	17-21	21-25	23-26	22-23	18-22	21-27	23-29	25-29	21-26	23-33	28-35	28-32	23-27	24-31	30-36					
FUNDS	170	157	164	176	176	187	181	197	205	231	245	245	236	238	261	263	279	329					

## Ishares Dj Stoxx 600 – Daily Datagraph

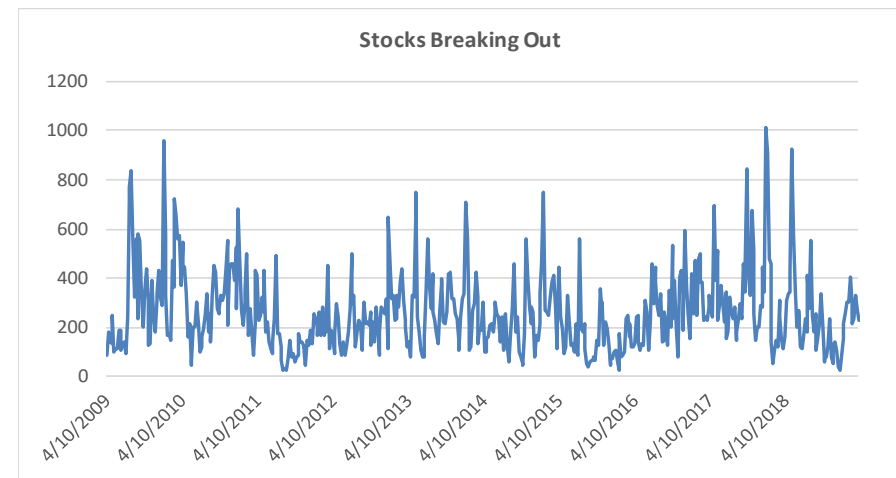


Source: Panaray / William O'Neil+Com

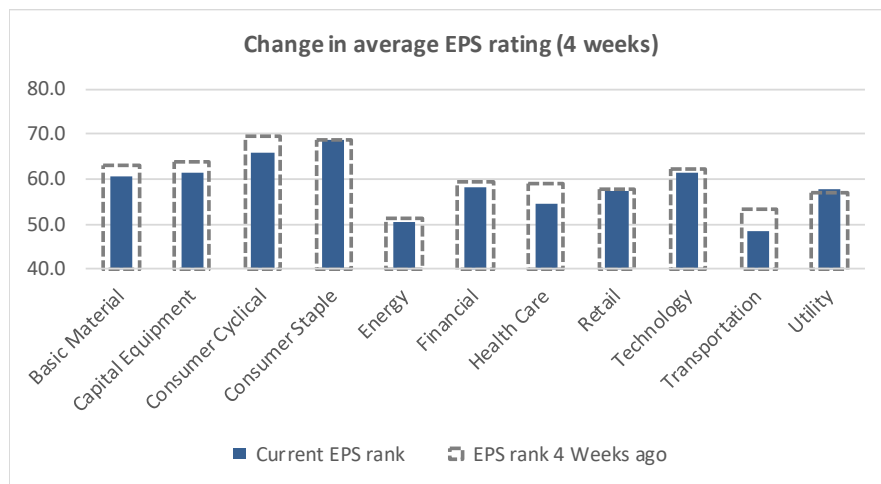
## Key Metrics Change: EPS, RS, # of EFL names & Breakouts



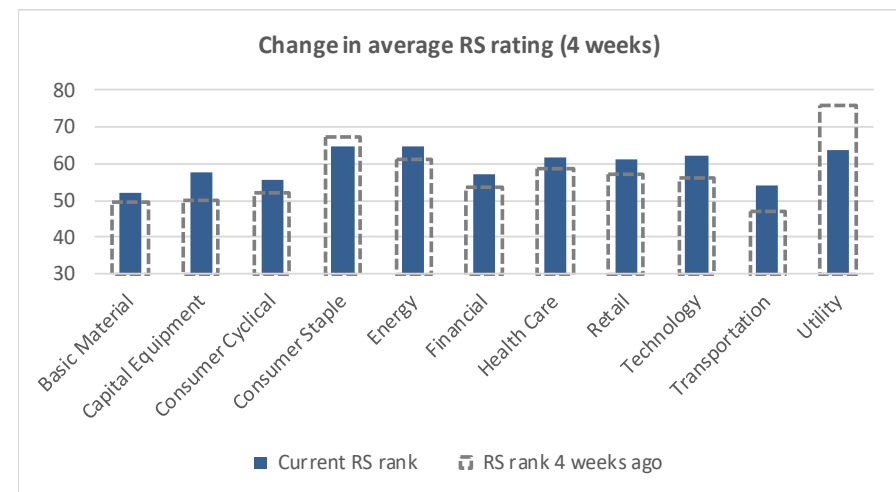
Source: William O'Neil + Co.



Source: William O'Neil + Co.



Source: William O'Neil + Co.



Source: William O'Neil + Co.

### How To Read The Sector Card

---

#### Outperforming

Stocks breaking out from pivot

---

We recommend buying stocks at the breakout level. A breakout is a price movement of the security through an identified level of resistance (pivot point) after forming a consolidation base. Our proprietary chart patterns are based on over 50 years of our active research into the behavior of equities.

#### Underperformers

Stocks in which investors are losing interest

---

Underperformers are stocks showing technical weakness. We believe these stocks are laggards relative to their own domestic markets and, if owned as a long, need to be reviewed carefully as they may be vulnerable to further downside risk and underperformance.

#### European Focus List

O'Neil Recommendations

---

The European Focus List (EFL) is a proprietary list of long ideas that fit the fundamental and technical criteria of the O'Neil Methodology.

#### Top Rated

Stocks displaying the best Composite rating

---

The **Composite Rating** combines the EPS Rank, Relative Strength Rating, Industry Group Rank, SMR Rating, Accumulation/Distribution Rating, and the stock's percent off its 52-week high. More weight is placed on EPS Rank and Relative Strength Ratings. The resulting rating of technical and fundamental factors is compared against all other stocks in the trading country and assigned a rating from 1 to 99, with 99 being the best. A rating of 90 means the stock has outperformed 90% of all other stocks.

#### European Short List

O'Neil Recommendations

---

The European Short List (ESL) is a proprietary list of short ideas curated by our sector analysts.

## Basic Material

### Outperforming

Stocks breaking out from pivot

Symbol	Name	Mkt cap (\$M)	Weeks from pivot
AIR.FR	Air Liquide	55,736	
AAL.GB	Anglo American	39,285	
KAZ.GB	Kaz Minerals	4,264	
RIO.GB	Rio Tinto	75,882	1

### Underperformers

Stocks in which investors are losing interest

Symbol	Name	Mkt cap (\$M)	A/D rtg
--------	------	---------------	---------

### European Focus List

O'Neil Recommendations

Symbol	Name	Mkt cap (\$M)	Weeks on EFL
GIVN.CH	Givaudan 'N'	22,907	19
IMCD.NL	Imcd Group	4,135	4

### Top Rated

Stocks Displaying the Best Composite Rating

Symbol	Name	Mkt cap (\$M)	Composite Rating
IMCD.NL	Imcd Group	4,135	99
RIO.GB	Rio Tinto	75,882	96
ALTR.PT	Altri Sgps	1,651	95
EVR.GB	Evraz	12,045	95
BHP.GB	Bhp Gp	52,552	94
KAZ.GB	Kaz Minerals	4,264	94
SIKACH	Sika	20,423	94
AAL.GB	Anglo American	39,285	93
FXPO.GB	Ferrexpo	2,114	92
HGM.GB	Highland Gold Mining	879	92

### European Short List

O'Neil Recommendations

Symbol	Name	Mkt cap (\$M)	Weeks Since Short
SOL.BE	Solvay	12,084	40



## Capital Equipment

### Outperforming

Stocks breaking out from pivot

Symbol	Name	Mkt cap (\$M)	Weeks from pivot
BAM.NL	Bam Groep Kon.	1,279	
HEX.NO	Hexagon Composites	760	
HUIF.FI	Huhtamaki	4,154	
INRN.CH	Interroll	1,815	1
JENX.DE	Jenoptik (Xet)	2,230	
RTO.GB	Rentokil Initial	8,783	
QT@F.FR	Schneider Electric	47,421	
TOM.NO	Tomra Systems	4,501	1

### Underperformers

Stocks in which investors are losing interest

Symbol	Name	Mkt cap (\$M)	A/D rtg
KIE.GB	Kier Group	771	-32
BOSN.CH	Bossard 'B'	1,022	-26

### European Focus List

O'Neil Recommendations

Symbol	Name	Mkt cap (\$M)	Weeks on EFL
AIRS.FR	Airbus	102,604	2
EDEN.FR	Edenred	11,151	10
HLMA.GB	Halma	8,698	4
HSV.GB	Homeserve	4,706	39
SGM.FR	Safran	56,905	0
ROFR.FR	Teleperformance	10,739	176

### Top Rated

Stocks Displaying the Best Composite Rating

Symbol	Name	Mkt cap (\$M)	Composite Rating
HLMA.GB	Halma	8,698	99
MEO.FI	Metso	5,447	99
HSV.GB	Homeserve	4,706	98
INRN.CH	Interroll	1,815	98
RWS.GB	Rws Holdings	1,839	98
AIRS.FR	Airbus	102,604	97
DEZX.DE	Deutz (Xet)	1,113	97
PFVX.DE	Pfeiffer Vacuum (Xet) Te	1,638	97
INDT.SE	Indutrade	3,586	96
IWG.GB	Iwg	3,024	96

### European Short List

O'Neil Recommendations

Symbol	Name	Mkt cap (\$M)	Weeks Since Short
--------	------	---------------	-------------------

## Consumer Cyclical

### Outperforming

Stocks breaking out from pivot

Symbol	Name	Mkt cap (\$M)	Weeks from pivot
CDR.PL	Cd Project Red	5,204	1
FORT.GB	Forterra	789	
WBYF.SE	Wallenstam 'B'	3,054	1

### Underperformers

Stocks in which investors are losing interest

Symbol	Name	Mkt cap (\$M)	A/D rtg
ROC.DK	Rockwool International	2,555	-43
HOME.ES	Neinor Homes	938	-29

### European Focus List

O'Neil Recommendations

Symbol	Name	Mkt cap (\$M)	Weeks on EFL
LVMH.FR	Lvmh	188,953	2
NIBE.SE	Nibe Industrier B	5,922	8
PUMX.DE	Puma (Xet)	9,027	54
SEB.FR	Seb	8,948	4
TGYM.IT	Technogym	2,455	27
THQ.SE	Thq Nordic	2,159	2

### Top Rated

Stocks Displaying the Best Composite Rating

Symbol	Name	Mkt cap (\$M)	Composite Rating
DCAR.SE	Hembla B	1,701	99
KRX.IE	Kingspan Group	8,849	99
RHIM.GB	Rhi Magnesita Nv	3,100	99
SEB.FR	Seb	8,948	99
THQ.SE	Thq Nordic	2,159	99
CDI.FR	Christian Dior	87,794	98
RMS.FR	Hermes Intl.	70,766	98
MSLH.GB	Marshalls	1,650	98
NIBE.SE	Nibe Industrier B	5,922	98
PUMX.DE	Puma (Xet)	9,027	98

### European Short List

O'Neil Recommendations

Symbol	Name	Mkt cap (\$M)	Weeks Since Short
RENU.FR	Renault	20,689	41

## Consumer Staples

### Outperforming

Stocks breaking out from pivot

Symbol	Name	Mkt cap (\$M)	Weeks from pivot
HBAN.NL	Heineken Holding	29,207	1

### Underperformers

Stocks in which investors are losing interest

Symbol	Name	Mkt cap (\$M)	A/D rtg
SALM.NO	Salmar	5,565	-33
OIZ.IE	Origin Enterprises	749	-31

### European Focus List

O'Neil Recommendations

Symbol	Name	Mkt cap (\$M)	Weeks on EFL
CPR.IT	Davide Campari Milano	11,297	19
DGE.GB	Diageo	97,326	14
GSF.NO	Grieg Seafood	1,382	28
MHG.NO	Mowi	11,706	25

### Top Rated

Stocks Displaying the Best Composite Rating

Symbol	Name	Mkt cap (\$M)	Composite Rating
FEVR.GB	Fevertree Drinks	4,572	98
BVIC.GB	Britvic	3,317	97
OR@F.FR	L'Oreal	151,666	96
NESN.CH	Nestle 'R'	291,930	96
GSF.NO	Grieg Seafood	1,382	95
LISP.CH	Choc.Lindt & Spruengli I	7,306	94
ITP.FR	Interparfums	2,263	94
RBR.DK	Royal Unibrew	3,787	94
DGE.GB	Diageo	97,326	93
UNIL.NL	Unilever Dutch Cert.	99,825	92

### European Short List

O'Neil Recommendations

Symbol	Name	Mkt cap (\$M)	Weeks Since Short
		-	-

## Energy

### Outperforming

Stocks breaking out from pivot

Symbol	Name	Mkt cap (\$M)	Weeks from pivot
AKER.NO	Aker	5,819	
IGYX.DE	Innogy (Xet)	25,978	
GAMES	Siemens Gamesa Ren	11,419	

### Underperformers

Stocks in which investors are losing interest

Symbol	Name	Mkt cap (\$M)	A/D rtg
--------	------	---------------	---------

### European Focus List

O'Neil Recommendations

Symbol	Name	Mkt cap (\$M)	Weeks on EFL
DNO.NO	Dno	2,474	7
DEN.DK	Orsted	32,454	19

### Top Rated

Stocks Displaying the Best Composite Rating

Symbol	Name	Mkt cap (\$M)	Composite Rating
DGOC.GB	Diversified Gas And Oil	898	99
GAMES	Siemens Gamesa Ren	11,419	97
DNO.NO	Dno	2,474	95
FKR.IT	Falck Renewables	1,127	95
AKER.NO	Aker	5,819	94
GTT.FR	Gtt	3,743	94
NEST.FI	Neste	27,947	94
FRO.NO	Frontline	1,162	93
GKP.GB	Gulf Keystone Ptl.(Di)	750	92
AKEP.NO	Aker Bp	12,754	89

### European Short List

O'Neil Recommendations

Symbol	Name	Mkt cap (\$M)	Weeks Since Short
--------	------	---------------	-------------------

## Financial

### Outperforming

Stocks breaking out from pivot

Symbol	Name	Mkt cap (\$M)	Weeks from pivot
AEDI.BE	Aedifica	1,796	1
AZM.IT	Azimut Holding	2,658	
COFN.BE	Cofinimmo	2,993	
UKW.GB	Greencoat Uk Wind	2,277	
ICAD.FR	Icade Reit	6,508	
KLOB.SE	Kloven B	1,184	1
LIFC.SE	Lifco B	3,668	
PGHN.CH	Partners Group Holding	19,743	
QLT.GB	Quilter	3,882	
SVS.GB	Savills	1,764	

### Top Rated

Stocks Displaying the Best Composite Rating

Symbol	Name	Mkt cap (\$M)	Composite Rating
ADYE.NL	Adyen	23,856	99
MONT.BE	Montea Comm	1,312	99
WDP.BE	Wdp	3,658	99
AJB.GB	AJ Bell Plc	1,796	98
CCFS.GB	Charter Court Financial	1,091	98
LIFC.SE	Lifco B	3,668	98
LLOY.GB	Lloyds Banking Group	58,287	98
LSE.GB	London Stock Ex.Group	22,538	98
BALB.SE	Fastighets Balder B	5,477	97
IHP.GB	IntegraFin Holdings Plc	1,538	97

### Underperformers

Stocks in which investors are losing interest

Symbol	Name	Mkt cap (\$M)	A/D rtg
LBK.ES	Liberbank	1,348	-51
INTU.GB	Intu Properties	1,857	-47
SIPF.NL	Eurocommercial Dutch	1,448	-38
BKIA.ES	Bankia	8,447	-33
FLOW.NL	Flow Traders	1,295	-31
WH.NL	Wereldhave	1,115	-30

### European Focus List

O'Neil Recommendations

Symbol	Name	Mkt cap (\$M)	Weeks on EFL
ADYE.NL	Adyen	23,856	5
LSE.GB	London Stock Ex.Group	22,538	6

### European Short List

O'Neil Recommendations

Symbol	Name	Mkt cap (\$M)	Weeks Since Short
UCG.IT	Unicredit	30,294	33
CRDA.FR	Credit Agricole	36,879	4

## Healthcare

### Outperforming

Stocks breaking out from pivot

Symbol	Name	Mkt cap (\$M)	Weeks from pivot
AMB.DK	Ambu B	5,856	1
BIM.FR	Biomerieux	10,196	
GLPG.NL	Galapagos	6,714	
SRT3X.DE	Sartorius Pref. (Xet)	6,841	

### Underperformers

Stocks in which investors are losing interest

Symbol	Name	Mkt cap (\$M)	A/D rtg
BAYNX.DE	Bayer (Xet)	63,263	-36
BSLN.CH	Basilea Pharmaceutica	553	-30
EI.FR	Essilorluxottica	47,560	-29
ATTE.SE	Attendo	811	-26

### European Focus List

O'Neil Recommendations

Symbol	Name	Mkt cap (\$M)	Weeks on EFL
AFX.DE	Carl Zeiss Meditec (Xet)	7,417	12
COL.DK	Coloplast B	21,944	1
GSN.DK	Gn Store Nord	6,762	5
KORI.FR	Korian	3,189	2
SRT3X.DE	Sartorius Pref. (Xet)	6,841	0
VITR.SE	Vitrolife	2,528	10

### Top Rated

Stocks Displaying the Best Composite Rating

Symbol	Name	Mkt cap (\$M)	Composite Rating
DIM.FR	Sartorius Stedim Biotec	11,684	99
VITR.SE	Vitrolife	2,528	99
CEVI.SE	Cellavision	746	98
GSN.DK	Gn Store Nord	6,762	98
EVTX.DE	Evotec (Xet)	4,213	97
GEN.DK	Genmab	10,867	97
COL.DK	Coloplast B	21,944	96
KORI.FR	Korian	3,189	95
SRT3X.DE	Sartorius Pref. (Xet)	6,841	95
STMN.CH	Straumann Holding	12,844	95

### European Short List

O'Neil Recommendations

Symbol	Name	Mkt cap (\$M)	Weeks Since Short
--------	------	---------------	-------------------

## Retail

### Outperforming

Stocks breaking out from pivot

Symbol	Name	Mkt cap (\$M)	Weeks from pivot
CPG.GB	Compass Group	37,472	1

### Underperformers

Stocks in which investors are losing interest

Symbol	Name	Mkt cap (\$M)	A/D rtg
--------	------	---------------	---------

### European Focus List

O'Neil Recommendations

Symbol	Name	Mkt cap (\$M)	Weeks on EFL
--------	------	---------------	--------------

### Top Rated

Stocks Displaying the Best Composite Rating

Symbol	Name	Mkt cap (\$M)	Composite Rating
DIP.PL	Dino Polska Sa	3,231	99
BME.GB	B&M European Val.Ret.	5,007	98
JD.GB	Jd Sports Fashion	6,357	98
EPR.NO	Europris	558	97
BOO.GB	Boohoo Group	2,910	96
DNLM.GB	Dunelm Group	2,380	96
KER.FR	Kering	74,011	96
GNK.GB	Greene King	2,718	95
GRG.GB	Greggs	2,447	94
WTB.GB	Whitbread	11,733	94

### European Short List

O'Neil Recommendations

Symbol	Name	Mkt cap (\$M)	Weeks Since Short
DUFN.CH	Dufry	5,529	32

## Technology

### Outperforming

Stocks breaking out from pivot

Symbol	Name	Mkt cap (\$M)	Weeks from pivot
DUST.SE	Dustin Group	877	
EKBF.SE	Hexagon B	19,180	
NOS.PT	Nos Sgps	3,473	
SOI.FR	Soitec	2,764	

### Underperformers

Stocks in which investors are losing interest

Symbol	Name	Mkt cap (\$M)	A/D rtg
FILA.IT	Fila	615	-40
SESG.FR	Ses Fdr (Par)	6,183	-35

### European Focus List

O'Neil Recommendations

Symbol	Name	Mkt cap (\$M)	Weeks on EFL
ASML.NL	Asml Holding	84,435	2
AVV.GB	Aveva Group	6,861	2
DSY.FR	Dassault Systemes	39,106	7
NEMX.DE	Nemetschek (Xet)	6,658	7
SOI.FR	Soitec	2,764	5

### Top Rated

Stocks Displaying the Best Composite Rating

Symbol	Name	Mkt cap (\$M)	Composite Rating
ADVX.DE	Adva Optical Netwg.(Xet)	544	99
COPX.DE	Compugroup Medical (Xet)	3,332	99
DSY.FR	Dassault Systemes	39,106	99
NEMX.DE	Nemetschek (Xet)	6,658	99
NOS.PT	Nos Sgps	3,473	99
G24X.DE	Scout24 (Xet)	5,575	99
SCT.GB	Softcat	2,225	99
ALS3.FR	Solutions 30 Se	1,354	99
TEMN.CH	Temenos N	10,794	99
TECN.IT	Tinexta	562	99

### European Short List

O'Neil Recommendations

Symbol	Name	Mkt cap (\$M)	Weeks Since Short
WAFX.DE	Siltronic (Xet)	2,979	40



## Transportation

### Outperforming

Stocks breaking out from pivot

Symbol	Name	Mkt cap (\$M)	Weeks from pivot
CAF.ES	Const Y Auxiliar De Ferr	1,692	

### Underperformers

Stocks in which investors are losing interest

Symbol	Name	Mkt cap (\$M)	A/D rtg
NAS.NO	Norwegian Air Shuttle	642	-42

### European Focus List

O'Neil Recommendations

Symbol	Name	Mkt cap (\$M)	Weeks on EFL
--------	------	---------------	--------------

### Top Rated

Stocks Displaying the Best Composite Rating

Symbol	Name	Mkt cap (\$M)	Composite Rating
DSV.DK	Dsv 'B'	16,497	99
UTA.FR	Air France-Klm	5,149	90
PST.IT	Poste Italiane	12,805	90
PWTN.CH	Panalpina Welttranspor	4,827	88
GOG.GB	Go-Ahead Group	1,120	86
FNNA.FI	Finnair	1,195	83
DFD.DK	Dfds	2,650	79
CAF.ES	Const Y Auxiliar De Ferr	1,692	76
TLGO.ES	Talgo	892	75
DTG.GB	Dart Group	1,574	72

### European Short List

O'Neil Recommendations

Symbol	Name	Mkt cap (\$M)	Weeks Since Short
--------	------	---------------	-------------------

## Utility

### Outperforming

Symbol	Name	Mkt cap (\$M)	Weeks from pivot
VIE.FR	Veolia Environ	12,936	

### Underperformers

Symbol	Name	Mkt cap (\$M)	A/D rtg
CNA.GB	Centrica	8,350	-55
ERE.PL	Energa	903	-26

### European Focus List

Symbol	Name	Mkt cap (\$M)	Weeks on EFL
TEP.GB	Telecom Plus	1,543	18

### Top Rated

Stocks Displaying the Best Composite Rating

Symbol	Name	Mkt cap (\$M)	Composite Rating
ACE.IT	Acea	3,827	96
RWEX.DE	Rwe (Xet)	15,517	90
VIE.FR	Veolia Environ	12,936	90
VERB.AT	Verbund	8,417	89
ENEL.IT	Enel	64,946	88
IBE.ES	Iberdrola	58,220	88
IRE.IT	Iren	3,353	88
TEP.GB	Telecom Plus	1,543	88
ELI.BE	Elia System Operator	4,196	87
HER.IT	Hera	5,400	87

### European Short List

O'Neil Recommendations

Symbol	Name	Mkt cap (\$M)	Weeks Since Short
--------	------	---------------	-------------------

### Disclaimer

Offers the world's leading institutional investment managers a distinct blend of quantitative, fundamental, and technical expertise in global stock buy-and-sell recommendations. Its core method profiles stocks displaying the characteristics of outperformance proven persistent over market history—drawn from the firm's industry-leading database.

William O'Neil + Co., Incorporated is a Registered Investment Advisor with the State of California and certain other states. The firm and its affiliates may now or in the future have positions in the securities mentioned in this or other publications. Charts are intended to be used as tools to assist institutional investors in identifying equity ideas worthy for further review. Charts provide certain current and historical information, but are not a substitute for comprehensive analysis of the individual stocks. For further information about our business and legal policies, please see [williamoneil.com/legal](http://williamoneil.com/legal).

### ANALYST CERTIFICATION

The analysts primarily responsible for preparing this report certify that: (i) the views about the companies and their securities expressed in this report accurately reflect his/ her personal views, and (ii) no part of his/her compensation was, is, or will be, directly or indirectly, related to specific recommendations or views expressed in this report.

### NO INVESTMENT BANKING

William O'Neil + Company and its affiliates do not engage in investment banking and do not make a market in any securities. Neither William O'Neil + Company nor any of its affiliates have, during the past 12 months, received any compensation from any of the companies discussed in this report. None of the companies discussed in this report are, or have been during the past 12 months, clients of William O'Neil + Company or its affiliates.

### PROPRIETARY POSITIONS

William O'Neil + Company does not maintain proprietary positions in any securities. Employees of William O'Neil + Company and/or affiliates may now or in the future own positions in the companies discussed in this report. As of the end of the month immediately preceding the date of publication of such reports, none of such employees or affiliates beneficially owned 1% or more of the common equity securities of any of the companies discussed in this report. William O'Neil + Co. Incorporated is a Registered Investment Advisor with the State of California and certain other states. Employees of William O'Neil + Company and its affiliates may now or in the future have positions in securities mentioned in this communication. Our content should not be relied upon as the sole factor in determining whether to buy, sell, or hold a stock. For important information about reports, our business, and legal notices please go to [www.williamoneil.com/legal](http://www.williamoneil.com/legal).