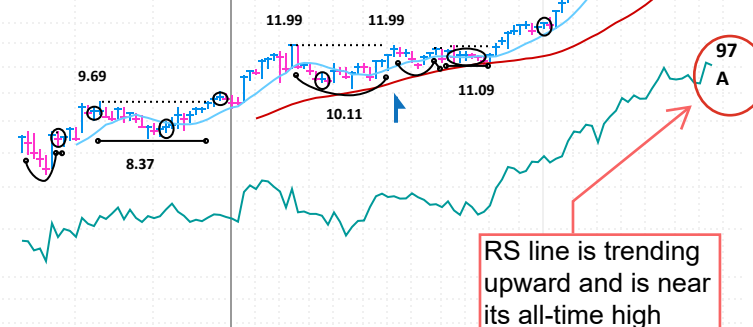


Strong FY25 earnings growth estimates

The stock is actionable after breaking out of a stage-three six-week flat base. It is trading near its 52-week high on good volume. Immediate support is at its 10-DMA, followed by its 21-DMA (-1.8%)

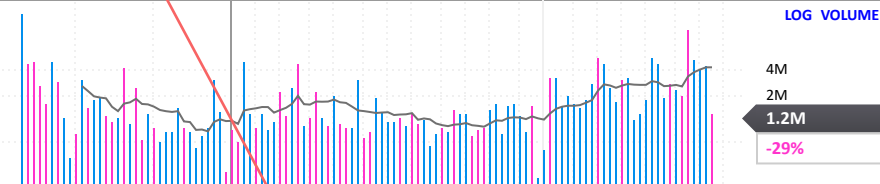
High near-term technical ratings denote strong accumulation

Solid fundamental ratings



RS line is trending upward and is near its all-time high

Institutional sponsorship rose y/y



P/E	63
2025 Est.:	16.7
2026 Est.:	13.4
5-yr High:	48
5-yr Low:	25
vs Ind. Avg:	2.2x