

European Weekly Summary

July 14, 2025

Key points:

- Last week, European indices closed mostly higher. Most European markets are trading above their short-term moving averages and are near/at their 52-week high. France, Germany, the U.K., Finland, Sweden, Austria, and the Netherlands gained 1–2%. Meanwhile, Denmark underperformed, declining ~1.1%. The index is facing heavy resistance at the 50-DMA and trading 39% off its 52-week high. Switzerland declined 0.3% and is facing resistance at the 200-DMA, while Norway fell 0.2% and is 2% off its 52-week high. Italy and Portugal declined 0.5–0.7%, after hitting a new 52-week high during the week. France's CAC 40 retook all its key moving averages after bouncing off the 200-DMA. The index is 5% off its 52-week high.
- Last week, sector performance was mostly positive. Transportation (+2.6%) led the gains, followed by Consumer Cyclical (+2.5%) and Capital Equipment (+2.1%). Energy, Financial, Basic Material, and Technology gained 1.5–2.0%. Retail was up 0.5%. Utility (-1.3%) lagged the most, while Consumer Staple and Health Care fell less than 0.5%.
- We remain constructive on the European markets as indices continue to consolidate near their 52-week highs. Indices continue to trade constructively above their short-term moving averages, with nine major indices now in a Confirmed Uptrend.
- From Sector our Score Cards (refer to pages 9 to 19), stocks of interest include: Thyssenkrupp (TAKX.DE), Cementir (CEM.IT), Kardex (KARN.CH), DoCo Rest (DOC.AT), Sixt (SIX2X.DE), Buzzi (BZU.IT), Gjensidige Forsikring (GJF.NO), ING (INGA.NL), KBC (KB.BE), Schrodgers (SDR.GB), Ambea (AMBE.SE), Grifols (PROB.ES), Indra Sistemas (IDR.ES), Ctt (CTT.PT), Intl. Cons. Airl. Gp (IAG.GB), and Friedrich Vorwerk Grp. (VH2x.DE).
- European Focus List update:
 - Actionable names include Alk-Abello B (ALK.DK), Galderma (GALD.CH), Swissquote 'R' (SQN.CH), Lottomatica Group (LOTG.IT), Nemetschek (NEMX.DE), Bawag Group (BWGP.AT), and Medicover B (MEDI.SE).
 - Addition: Galderma (GALD.CH).
 - Removal: None.

Prepared by:

Tristan d'Aboville – Executive Director – Research Analyst, tristan.daboville@williamoneil.com | Direct: +44 20 3178 7125 | Mobile: +44 77 0344 5260
Suman Patra –Equity Research Analyst, William O'Neil India suman.patra@williamoneilindia.com

European Weekly Summary

WILLIAM O'NEIL+CO.

Europe's Main Index Trading Along the 50-DMA, Remains in a Rally Attempt

Stoxx 600 gained ~1.1% last week and is trading along its 50-DMA. It is 3% off its 52-week high. Strong support is at the 100-DMA (-1%), followed by the 200-DMA (-4%). To continue to remain constructive, we would like to see the index hold/consolidate above its 50-DMA.

- Last week, Germany, the U.K., Denmark, Austria, and Italy were upgraded to a Confirmed Uptrend.
- Among the 16 indices we cover, nine are in a Confirmed Uptrend, three in a Rally Attempt, and four in an Uptrend Under Pressure. The average distribution day count stands at 2.6.

Retail and Technology Reversing Their Underperformance, Basic Material and Capital Equipment Continue to Show Strength

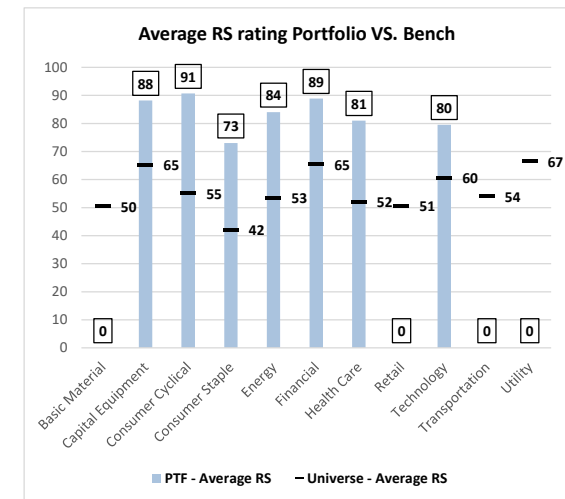
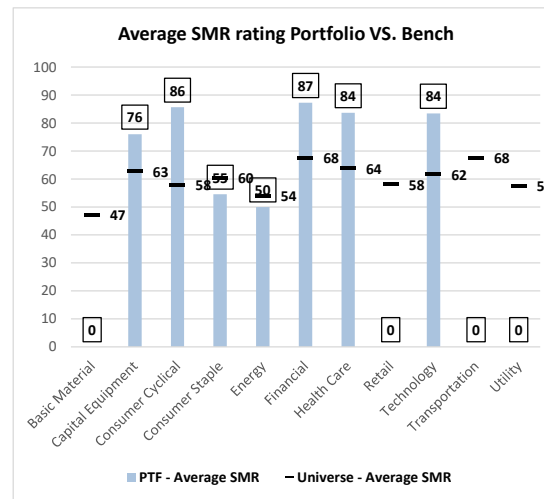
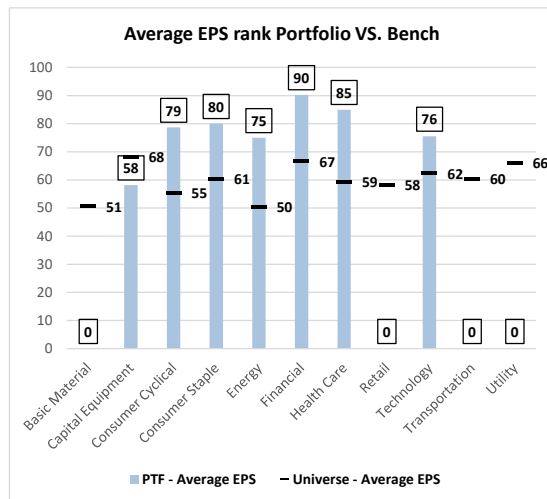
- On our rotation graph, sectors exhibited mixed momentum last week. Capital Equipment continues to exhibit positive short-term momentum and remain in the best quadrant, while Utility is showing signs of weakness but remains in the best quadrant. Financial continues to show muted momentum.
- After a few weeks of positive momentum, Energy is showing deteriorating short-term momentum. Consumer Staple, Health Care, and Transportation also exhibited weakening momentum.
- Consumer Cyclical, Retail, and Technology showed improving short-term momentum during the week.

European Focus List Update

Addition: Galderma (GALD.CH)

Removal: None

William O'Neil Focus List EPS, SMR and RS Ratings vs. Benchmark



Source: William O'Neil + Co.

Sector Heat Map: Average Perf. - Market Cap Average Weighted

(Market Cap > \$1BN & ADV > \$1M)

Sectors	5 Days	4 Weeks	8 Weeks	13 Weeks	26 Weeks	YTD
Transportation	2.6%	-0.3%	-0.6%	21.0%	11.1%	9.1%
Consumer Cyclical	2.5%	4.9%	-1.2%	10.0%	1.1%	0.9%
Capital Equipment	2.1%	4.4%	4.9%	22.8%	28.0%	30.3%
Energy	2.0%	1.6%	7.0%	18.2%	1.4%	6.3%
Basic Material	1.9%	2.0%	1.8%	12.2%	8.0%	8.2%
Technology	1.8%	3.7%	4.1%	21.1%	12.7%	15.4%
Financial	1.5%	2.9%	0.5%	16.4%	20.6%	21.8%
Retail	0.5%	0.0%	-3.2%	7.1%	2.3%	1.2%
Consumer Staple	-0.2%	-2.5%	-1.6%	3.6%	9.2%	7.5%
Health Care	-0.5%	-4.0%	0.9%	8.8%	-4.7%	-2.0%
Utility	-1.3%	-0.9%	2.4%	9.7%	21.5%	19.6%

Source: William O'Neil + Co.

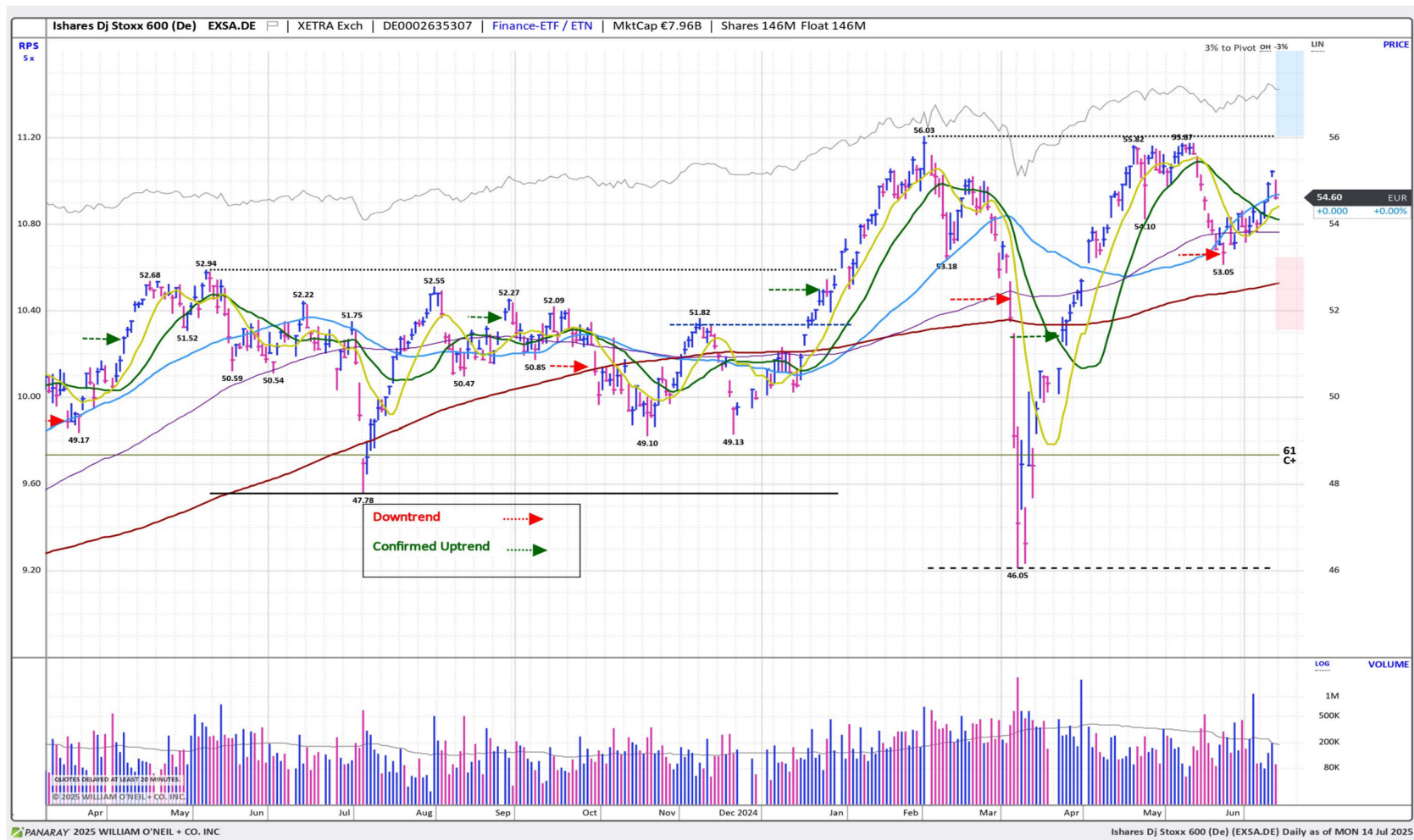
Market Condition

O'Neil Methodology

Country	Tickers	Market Condition	D- Day Count
France	0FRCAC40	Rally Attempt	N/A
Germany	0DAXINDX	Confirmed Uptrend	5
UK	CUKX.GB	Confirmed Uptrend	0
Stoxx600	EXSA.DE	Rally Attempt	N/A
Denmark	0DKKFXIN	Confirmed Uptrend	1
Ireland	0ISEQUIT	UnderPressure	4
Finland	0HEX25IN	Confirmed Uptrend	3
Norway	0OSLOOBX	Confirmed Uptrend	2
Sweden	0SWEDOMX	Confirmed Uptrend	1
Switzerland	0SWISSMI	Rally Attempt	N/A
Austria	0ATXINDX	Confirmed Uptrend	3
Italy	EWI	Confirmed Uptrend	0
Portugal	0POPSI20	Confirmed Uptrend	4
Spain	0IBEX35I	UnderPressure	3
Belgium	0BGBEL20	UnderPressure	4
Netherlands	0AMSTEOE	UnderPressure	4
		AVERAGE D-DAY	2.6

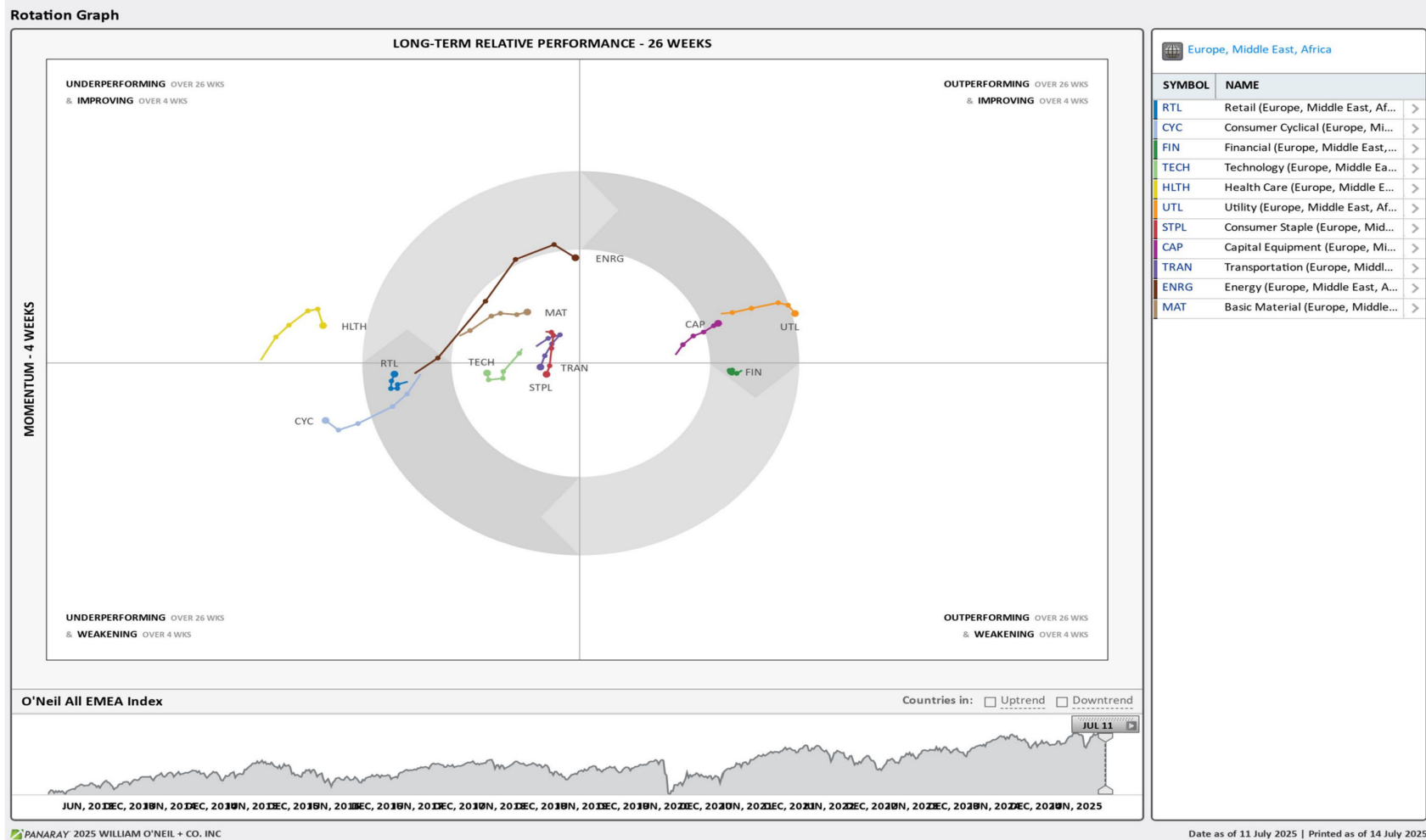
Source: William O'Neil + Co.

iShares Dj Stoxx 600 (EXSA.DE) – Daily Datagraph®



Source: William O'Neil + Co.

EMEA Rotation Chart



Source: William O'Neil + Co.

How To Read The Sector Card

European Focus List

O'Neil Recommendations

The **European Focus List (EFL)** is a proprietary list of long ideas that fit the fundamental and technical criteria of the O'Neil Methodology.

Top Rated

Stocks displaying the best Composite rating

The **Composite Rating** combines the EPS Rank, Relative Strength Rating, Industry Group Rank, SMR Rating, Accumulation/Distribution Rating, and the stock's percent off its 52-week high. More weight is placed on EPS Rank and Relative Strength Ratings. The resulting rating of technical and fundamental factors is compared against all other stocks in the trading country and assigned a rating from 1 to 99, with 99 being the best. A rating of 90 means the stock has outperformed 90% of all other stocks.

Outperforming

Stocks breaking out from consolidation

We recommend buying stocks at the **breakout level**. A breakout is a price movement of the security through an identified level of resistance (pivot point) after forming a consolidation base. Our proprietary chart patterns are based on over 50 years of our

Early Basing

Stocks trading near pivot

Stock near pivot point (last line of resistance) with improving technical characteristics and above average fundamental profile based on O'Neil proprietary ratings and rankings.

Laggards

Stocks below 200-DMA + 50-DMA in a downtrend

Laggards are stocks showing technical weakness. We believe these stocks are laggards relative to their own domestic markets and, if owned, need to be reviewed carefully as they may be vulnerable to further downside risk and underperformance.

European Weekly Summary

WILLIAM O'NEIL+CO.

Basic Material

O'Neil Focus List Constituent				Breaking Out This Week				Laggard			
O'Neil recommendations				Stocks breaking out from consolidation				Stocks below 200-DMA + 50-DMA in a downtrend			
Symbol	Name	Mkt Val, USD (Mil)	Focus List Since	Symbol	Name	Mkt Val, USD (Mil)	Composite Rating	Symbol	Name	Mkt Val, USD (Mil)	A/D, Nmbr Rtg, Cur Wk
				TKAX.DE	Thyssenkrupp (Xet)	8,202	89	SW@G.SE	Svenska Cellulosa Aktiebolaget S	8,364	-1
				CEM.IT	Cementir Holding	2,909	89	RIO.GB	Rio Tinto	75,489	-1
				MT.NL	Arcelormittal	29,361	74	BNRX.DE	Brenntag (Xet)	9,554	-6
				VAS.AT	Voestalpine	5,323	62	SM@G.SE	Holmen B	4,624	-35
								EVKX.DE	Evonik Industries (Xet)	9,773	-34
								IMCD.NL	Imcd Group	7,743	-1
								NVG.PT	Navigator Comp	2,740	-4
								BAKK.NO	Bakkafrost	2,691	-24
								ALTR.PT	Altri Sgps	1,182	-27
								NK.FR	Imerys	2,669	-22
								SOL.BE	Solvay	3,718	-11

Top Rated			
Stocks Ranked by best Composite rating			
Symbol	Name	Mkt Val, USD (Mil)	Composite Rating
HOC.GB	Hochschild Mining	1,950	98
VCT.FR	Vicat	3,359	95
ACTX.DE	Alzchem Gp (Xet)	1,746	92
SOL.IT	Sol	5,132	91
NDAX.DE	Aurubis (Xet)	5,016	90
GGP.GB	Greatland Gold	2,917	90
TKAX.DE	Thyssenkrupp (Xet)	8,202	89
CEM.IT	Cementir Holding	2,909	89
BRG.NO	Borregaard	2,014	88
FRES.GB	Fresnillo	15,088	87
HILS.GB	Hill & Smith Plc	2,066	85
ALLM.SE	Alleima	2,112	82
BOL.SE	Boliden Ord Shs	9,100	78
KAP.GB	Kazatomprom Jsc National Atomic	11,490	78
ANTO.GB	Antofagasta	25,132	77

Basing			
Stocks trading near pivot			
Symbol	Name	Mkt Val, USD (Mil)	Composite Rating
JMAT.GB	Johnson Matthey	4,228	73
OUTO.FI	Outokumpu 'A'	2,026	71
ACX.ES	Acerinox 'R'	3,238	59
SSBF.SE	Ssab B	4,459	55
SCB.DK	Schouw And	2,457	34
AAL.GB	Anglo American	35,927	28

European Weekly Summary

WILLIAM O'NEIL+CO.

Capital Equipment

O'Neil Focus List Constituent				Breaking Out This Week				Laggard			
O'Neil recommendations				Stocks breaking out from consolidation				Stocks below 200-DMA + 50-DMA in a downtrend			
Symbol	Name	Mkt Val, USD (Mil)	Focus List Since	Symbol	Name	Mkt Val, USD (Mil)	Composite Rating	Symbol	Name	Mkt Val, USD (Mil)	A/D, Nbr Rtg, Cur Wk
SPIE.FR	Spie	9,258	99	KARN.CH	Kardex Holding Ag	2,853	99	NKT.DK	Nkt	4,465	-14
BEAN.CH	Belimo N	13,196	97	NCH2X.DE	Thyssenkrupp Nucera	1,574	89	SWEB.SE	Sweco B	5,873	-1
RR.GB	Rolls-Royce Holdings	1,12,760	89	CGCB.FI	Hiab Corporation B	3,535	71	BILL.SE	Billerud Aktiebolag	2,518	-20
REL.GB	Relx	98,803	83	WACX.DE	Wacker Neuson (Xet)	2,054	69	AFB.SE	Afry B	1,907	-3
ENRX.DE	Siemens Energy (Xet)	85,668	75					ABF.GB	Associated Brit.Foods	19,866	-2
SGM.FR	Safran	1,38,421	67					SAXX.DE	Stroeer (Xet)	3,209	-26
								LTBF.SE	Latour Investment B	15,710	-28
								HUIF.FI	Huhtamaki	3,935	-39
								WSG.NL	Wolters Kluwer	38,716	-52
								VIS.ES	Viscofan	3,245	-29
								WPP.GB	Wpp	6,131	-14
								SIGN.CH	Sig Group N	7,194	-36
								HAS.GB	Hays	1,431	-21
								ROSE.GB	Rosebank Industries Plc	1,735	-36

Top Rated				Basing			
Stocks Ranked by best Composite rating				Stocks trading near pivot			
Symbol	Name	Mkt Val, USD (Mil)	Composite Rating	Symbol	Name	Mkt Val, USD (Mil)	Composite Rating
SPIE.FR	Spie	9,258	99	HOTX.DE	Hochtief (Xet)	15,798	99
RHM.DE	Rheinmetall (Xet)	98,722	99	EGL.PT	Mota Engil Sggs	1,506	94
EXOP.FR	Exosens	2,434	99	LAGR.SE	Lagercrantz Group B	5,048	90
R3NKX.DE	Renk Group	8,415	99	MYCR.SE	Mycronic	4,404	90
KARN.CH	Kardex Holding Ag	2,853	99	LOOM.SE	Loomis B	2,920	89
SAAB.SE	Saab B	27,317	99	DANR.IT	Danieli & C Rsp	1,283	89
HEIJ.NL	Kon.Heijmans Du. Certs.	1,821	99	DBG.FR	Derichebourg	1,114	89
AERO.CH	Montana N	1,961	99	BUFA.SE	Bufab	1,906	88
HOTX.DE	Hochtief (Xet)	15,798	99	DAN.IT	Danieli	1,680	87
GREN.ES	Grenergy Renovables	2,178	99	IVSO.SE	Invisio	1,888	85
MT.IT	Marie	4,714	99	ALLG.AT	Porr	1,361	85
BRKN.CH	Burkhalter N	1,758	98	EPIA.SE	Epiroc A	18,611	85
PER.DK	Per Aarsleff Holding B	2,102	98	TOM.NO	Tomra Systems	4,835	85
MTXX.DE	Mtu Aero Engines (Xet) Hldg.	24,099	98	GRNE.SE	Granges	1,452	84
ISS.DK	Iss	5,068	98	SAND.SE	Sandvik	30,138	82

European Weekly Summary

WILLIAM O'NEIL+CO.

Consumer Cyclical

O'Neil Focus List Constituent				Breaking Out This Week				Laggard			
O'Neil recommendations				Stocks breaking out from consolidation				Stocks below 200-DMA + 50-DMA in a downtrend			
Symbol	Name	Mkt Val, USD (Mil)	Focus List Since	Symbol	Name	Mkt Val, USD (Mil)	Composite Rating	Symbol	Name	Mkt Val, USD (Mil)	A/D, Nmbr Rtg, Cur Wk
LOTG.IT	Lottomatica Group	7,266	99	LOTG.IT	Lottomatica Group	7,266	99	EVOG.SE	Evolution	16,438	-3
GAW.GB	Games Workshop	7,152	95	DOC.AT	Do Co Rest.Cater.	2,542	98	PSON.GB	Pearson	9,268	-14
TGYM.IT	Technogym	2,963	88	SIX2X.DE	Sixt (Xet)	3,330	92	BREE.GB	Breedon Group	1,811	-1
				SIX3X.DE	Sixt Pref. (Xet)	1,264	90	ADSH.ES	Aedas Homes	1,144	-8
				TGYM.IT	Technogym	2,963	88	HMBF.SE	Hennes & Mauritz B	19,985	-15
				BZU.IT	Buzzi	11,620	87	SKIS.SE	Skistar B	1,207	-29
				MEL.ES	Melia Hotels Intl.	1,967	62	PSN.GB	Persimmon	5,237	-9
				BMWVX.DE	Bmw (Xet)	56,140	47	MATI.FR	Bollore	17,408	-27
				HOME.ES	Neinor Homes	1,819	46	KRX.IE	Kingspan Group	15,317	-1
								MONC.IT	Moncler	16,384	-9
								BTRW.GB	Barratt Redrow	8,080	-1
								RENU.FR	Renault	14,243	-7
								TW.GB	Taylor Wimpey	5,316	-3
								MS.IT	Mfe B	1,053	-19
								MFEA.IT	Mfe A	1,091	-62
								NOKT.FI	Nokian Renkaat	1,035	-19
								SFER.IT	Salvatore Ferragamo	1,044	-3

Top Rated				Basing			
Stocks Ranked by best Composite rating				Stocks trading near pivot			
Symbol	Name	Mkt Val, USD (Mil)	Composite Rating	Symbol	Name	Mkt Val, USD (Mil)	Composite Rating
LOTG.IT	Lottomatica Group	7,266	99	AC.FR	Accor	13,563	89
LIFC.SE	Lifco B	17,760	98	CCL.GB	Carnival	3,859	86
DOC.AT	Do Co Rest.Cater.	2,542	98	SGO.FR	Saint Gobain	58,576	86
GAW.GB	Games Workshop	7,152	95	DLG.IT	De Longhi	5,274	83
MEGP.GB	Me Group Intl.	1,122	95	C5H.IE	Cairn Homes (Dub)	1,594	72
EVDX.DE	Cts Eventim (Xet)	11,818	94	OEGP.ES	Edreams Odigeo	1,281	69
SRC.GB	Sigmaroc	1,717	94	FR.FR	Valeo	2,868	68
BETS.SE	Betsson B	2,544	94	TUI1X.DE	Tui (Xet)	4,568	61
ALI.SE	Autoliv Sdr	9,362	93	BOSSX.DE	Boss (Hugo) (Xet)	3,444	57
SIX2X.DE	Sixt (Xet)	3,330	92	EX@F.FR	Vivendi	3,490	57
FGP.GB	First Group	1,717	92	MCL.FR	Michelin	26,558	48
HARV.FI	Harvia	1,087	92	BMW3X.DE	Bmw Pref. (Xet)	5,024	37
HEIX.DE	Heidelbergcement (Xet)	42,470	92				
ZEG.GB	Zegona Communications	7,937	90				
SIX3X.DE	Sixt Pref. (Xet)	1,264	90				

European Weekly Summary

WILLIAM O'NEIL+CO.

Consumer Staples

O'Neil Focus List Constituent				Breaking Out This Week				Laggard			
O'Neil recommendations				Stocks breaking out from consolidation				Stocks below 200-DMA + 50-DMA in a downtrend			
Symbol	Name	Mkt Val, USD (Mil)	Focus List Since	Symbol	Name	Mkt Val, USD (Mil)	Composite Rating	Symbol	Name	Mkt Val, USD (Mil)	A/D, Nmbr Rtg, Cur Wk
GALD.CH	Galderma Group N	37,424	95	GALD.CH	Galderma Group N	37,424	95	BSN.FR	Danone	54,040	-21
PFD.GB	Premier Foods	2,251	66					RBR.DK	Royal Unibrew	4,109	-24
								AAK.SE	Aak	6,581	-38
								BEIX.DE	Beiersdorf (Xet)	31,086	-12
								EMMN.CH	Emmi Ag	5,038	-24
								ESSI.SE	Essity B	17,397	-35
								LBAK.BE	Lotus Bakeries	6,964	-33
								DSFR.NL	Dsm Firmenich	27,822	-13
								DGE.GB	Diageo	57,121	-9
								NESN.CH	Nestle 'N'	2,49,047	-40
								STG.DK	Scandinavian Tobacco	1,062	-20
								SALM.NO	Salmar	5,436	-27
								SZUX.DE	Suedzucker (Xet)	2,485	-28

Top Rated			
Stocks Ranked by best Composite rating			
Symbol	Name	Mkt Val, USD (Mil)	Composite Rating
GNC.GB	Greencore Group	1,384	98
GALD.CH	Galderma Group N	37,424	95
CCH.GB	Coca-Cola Hbc (Cdi)	19,246	95
BATS.GB	British American Tobacco	1,12,271	92
JDPS.NL	Jde Peet S	13,754	92
BAG.GB	Barr (Ag)	1,036	86
LISN.CH	Chocoladefabriken Lindt & Spruen	22,106	86
LISP.CH	Choc.Lindt & Spruengli Par	16,390	85
BAKK.GB	Bakkavor Group Plc	1,694	81
ARYN.CH	Aryzta	2,494	80
CWK.GB	Cranswick	3,818	75
IMB.GB	Imperial Brands	32,003	75
CAB.DK	Carlsberg B	14,058	75
OR@F.FR	L'Oreal	2,33,521	74

Basing			
Stocks trading near pivot			
Symbol	Name	Mkt Val, USD (Mil)	Composite Rating

European Weekly Summary

WILLIAM O'NEIL+CO.

Energy

O'Neil Focus List Constituent				Breaking Out This Week				Laggard			
O'Neil recommendations				Stocks breaking out from consolidation				Stocks below 200-DMA + 50-DMA in a downtrend			
Symbol	Name	Mkt Val, USD (Mil)	Focus List Since	Symbol	Name	Mkt Val, USD (Mil)	Composite Rating	Symbol	Name	Mkt Val, USD (Mil)	A/D, Nbr Rtg, Cur Wk
ODDR.NO	Odjfell Drilling	1,745	95								

Top Rated			
Stocks Ranked by best Composite rating			
Symbol	Name	Mkt Val, USD (Mil)	Composite Rating
GTT.FR	Gtt	7,381	98
ODDR.NO	Odjfell Drilling	1,745	95
CAER.ES	Corporacion Acciona Energias Re	8,588	95
SEM.ES	Solaria Energia Y Medio Ambiente	1,481	95
SUBC.NO	Subsea 7	5,858	88
SCAT.NO	Scatec	1,543	81
RUI.FR	Rubis	3,473	79
AKEP.NO	Aker Bp	16,651	76
ITH.GB	lthaca Energy	3,748	75
VARE.NO	Var Energi	8,379	75
SPM.IT	Saipem	5,601	72
SBMO.NL	Sbm Offshore	4,800	71

Basing			
Stocks trading near pivot			
Symbol	Name	Mkt Val, USD (Mil)	Composite Rating
SUBC.NO	Subsea 7	5,858	88
VLR.FR	Vallourec	4,630	67
VEW.DK	Vestas Windsystems	16,659	56
SHEL.GB	Shell (Lon)	2,12,921	55

European Weekly Summary

WILLIAM O'NEIL+CO.

Financial

O'Neil Focus List Constituent				Breaking Out This Week				Laggard			
O'Neil recommendations				Stocks breaking out from consolidation				Stocks below 200-DMA + 50-DMA in a downtrend			
Symbol	Name	Mkt Val, USD (Mil)	Focus List Since	Symbol	Name	Mkt Val, USD (Mil)	Composite Rating	Symbol	Name	Mkt Val, USD (Mil)	A/D, Nbr Rtg, Cur Wk
G24X.DE	Scout24 (Xet)	10,653	98	SQN.CH	Swissquote 'R'	9,699	98	ZURN.CH	Zurich Insurance Group	1,01,723	-22
SQN.CH	Swissquote 'R'	9,699	98	GJF.NO	Gjensidige Forsikring	13,943	93	LSEG.GB	London Stock Ex.Group	76,584	-21
BWGP.AT	Bawag Group	10,108	97	INGA.NL	Ing Groep	71,705	91	UTG.GB	Unite Group	5,301	-30
TLXX.DE	Talanx Aktgsf. (Xet)	33,569	96	KB.BE	Kbc Group	44,215	88	NEXI.IT	Nexi	7,378	-3
III.GB	3i Group	55,020	91	SDR.GB	Schroders	8,354	87	CARM.FR	Carmila	2,788	-36
WISE.GB	WISE A	15,034	89	ROKB.SE	Roko B	3,174	87	SGRO.GB	Segro	12,010	-19
ADYE.NL	Adyen	55,951	85	IF.IT	Banca Ifis	1,707	86	LNBF.SE	Lundbergforetagen B	7,730	-11
				AZM.IT	Azimut Holding	5,079	83	JUST.GB	Just Group Plc	1,754	-8
				VATN.CH	Valiant 'R'	2,558	83	AZE.BE	Azelis Group	3,912	-19
				BFF.IT	Bff Bank	2,254	68	HBMN.CH	Hbm Healthcare Invs.	1,371	-5
								ISBF.SE	Investor B	55,113	-19
								WKP.GB	Workspace Group	1,029	-15
								BYG.GB	Big Yellow Group	2,468	-5
								WDP.BE	Warehouses De Pauw	5,538	-9
								BURE.SE	Bure Equity	2,280	-8
								ERF.FR	Eurazeo	5,182	-15

Top Rated				Basing			
Stocks Ranked by best Composite rating				Stocks trading near pivot			
Symbol	Name	Mkt Val, USD (Mil)	Composite Rating	Symbol	Name	Mkt Val, USD (Mil)	Composite Rating
PROT.NO	Protector Forsikring	4,114	99	HSBA.GB	Hsbc Hdq. (Ord \$0.50)	2,14,641	95
G24X.DE	Scout24 (Xet)	10,653	98	EQT.SE	Eqt	43,558	93
SQN.CH	Swissquote 'R'	9,699	98	BNP.FR	BNP Paribas	1,01,263	92
INFB.SE	Intea Fastigheter B	1,720	98	BPT.GB	Bridgepoint Grp	3,790	90
CBKX.DE	Commerzbank (Xet)	39,193	98	HSBK.GB	Halyk Bank Of Kazakhstan Jsc	6,790	88
BGEO.GB	Lion Finance Group PLC	4,218	98	RAT.GB	Rathbones Group	2,289	88
BWGP.AT	Bawag Group	10,108	97	AMJN.FR	Amundi (Wi)	16,978	83
ENX.FR	Euronext	18,120	97	KBCA.BE	Kbc Ancora	5,636	82
EFGN.CH	Efg International N	5,907	97	SAMA.FI	Sampo A	29,783	81
SGE.FR	Societe Generale	46,836	97	EXOO.NL	Exor Nv Ord	21,789	78
FTKX.DE	Fintech Group (Xet)	3,291	97	VONN.CH	Vontobel Holding	4,777	77
ALPH.GB	Alpha Group Plc	1,940	97	ECMP.NL	Eurocommercial Properties	1,746	73
TBCG.GB	Tbc Bank Group	3,720	97	QLT.GB	Quilter	3,110	70
TCAP.GB	Tp Icap	3,049	97	IUCF.SE	Industrivarden C	7,449	66
BP.IT	Banco Bpm	17,757	97	BNKR.GB	Bankers Inv.Trust	1,722	57

European Weekly Summary

WILLIAM O'NEIL+CO.

Health Care

O'Neil Focus List Constituent			
O'Neil recommendations			
Symbol	Name	Mkt Val, USD (Mil)	Focus List Since
ALK.DK	Alk-Abello B	6,175	99
MEDI.SE	Medicover B	2,018	96
MOVE.CH	Medacta Group	3,490	89

Breaking Out This Week			
Stocks breaking out from consolidation			
Symbol	Name	Mkt Val, USD (Mil)	Composite Rating
AMBE.SE	Ambea	1,048	97
PROB.ES	Grifols Ord Cl A	5,789	90
SDZ.CH	Sandoz Group	24,654	51

Laggard			
Stocks below 200-DMA + 50-DMA in a downtrend			
Symbol	Name	Mkt Val, USD (Mil)	A/D, Nmbr Rtg, Cur Wk
HLN.GB	Haleon	44,583	-1
AZN.GB	Astrazeneca	2,18,862	-22
SFZN.CH	Siegfried 'R'	5,111	-30
ARGX.BE	Argenx	34,378	-34
SQ@F.FR	Sanofi	1,19,173	-21
RO.CH	Roche Holdings 'B'	36,675	-1
DMPX.DE	Dermapharm Holding (Xe)	2,156	-20
DIA.IT	Diasorin	5,928	-5
VITR.SE	Vitrolife	2,074	-11
MRKX.DE	Merck Kgaa (Xet)	17,043	-14
SOON.CH	Sonova N	17,368	-10
ELKB.SE	Elektro B	1,849	-18
AFX.DE	Carl Zeiss Meditec (Xet)	5,442	-22
COL.DK	Coloplast B	19,764	-19
ZEADK	Zealand Pharma	4,094	-23
PHIL.NL	Philips Eln.Koninklijke	23,144	-26

Top Rated			
Stocks Ranked by best Composite rating			
Symbol	Name	Mkt Val, USD (Mil)	Composite Rating
ALK.DK	Alk-Abello B	6,175	99
TOBD.SE	Dynavox Group	1,288	99
UPR.IE	Uniphar	1,141	99
ASHG.SE	Asker Healthcare Group	4,298	98
AMBE.SE	Ambea	1,048	97
DESN.CH	Dottikon Es Holding	5,580	97
MEDI.SE	Medicover B	2,018	96
YPSN.CH	Ypsomed Holding R	7,138	96
ORNB.FI	Orion B	8,473	96
CVSG.GB	Cvs Group	1,163	95
ATTE.SE	Attendo	1,050	95
CHMDK	Chemometec	1,467	95
KORI.FR	Clariane	2,142	94
CTEC.GB	Convatec Group	7,220	94
EUF.FR	Eurofins Scien.	12,905	93

Basing			
Stocks trading near pivot			
Symbol	Name	Mkt Val, USD (Mil)	Composite Rating
ATTE.SE	Attendo	1,050	95
UCB.BE	Ucb	38,872	89
GRFP.ES	Grifols Class 'B' Pref.	2,599	86
ELN.IT	El En	1,084	79
VIRB.FR	Virbac	3,345	70
ONT.GB	Oxford Nanopore Tech	1,933	68
ORP.FR	Emeis	2,172	67
LAB.ES	Almirall	2,747	64
BAYNX.DE	Bayer (Xet)	31,400	42

European Weekly Summary

WILLIAM O'NEIL+CO.

Retail

O'Neil Focus List Constituent				Breaking Out This Week				Laggard			
O'Neil recommendations				Stocks breaking out from consolidation				Stocks below 200-DMA + 50-DMA in a downtrend			
Symbol	Name	Mkt Val, USD (Mil)	Focus List Since	Symbol	Name	Mkt Val, USD (Mil)	Composite Rating	Symbol	Name	Mkt Val, USD (Mil)	A/D, Nmbr Rtg, Cur Wk
				TKWY.NL	Just Eat Takeaway.Com	4,800	56	EI.FR	Essilorluxottica	1,29,647	-13
								ZALX.DE	Zalando (Xet)	8,835	-15
								DOM.GB	Domino's Pizza Group	1,324	-21
								MKS.GB	Marks & Spencer Group	9,104	-6
								IND.ES	Inditex	1,58,164	-17
								BME.GB	B&M European Val.Ret. (Di)	3,524	-27
								RDCX.DE	Redcare Pharmacy	2,165	-6
								COL.BE	Colruyt Group	5,336	-30
								OCDO.GB	Ocado Group	2,654	-20
								UHR.CH	The Swatch Group	4,961	-5

Top Rated			
Stocks Ranked by best Composite rating			
Symbol	Name	Mkt Val, USD (Mil)	Composite Rating
CLAS.SE	Clas Ohlson B	2,126	96
PUUI.FI	Puulo	1,342	95
FIEX.DE	Fielmann (Xet)	5,725	93
INCH.GB	Inchcape	3,888	89
SSPG.GB	Ssp Group	1,874	87
EPR.NO	Europris	1,576	86
SBRY.GB	Sainsbury (J)	8,719	84
SON.PT	Sonae Sgps	2,941	84
DIA.ES	Disb.Intnac.De Amen.	1,962	84
AXFO.SE	Axfood	6,423	84
FERG.GB	Ferguson Enterprises	44,012	83
NXT.GB	Next	20,244	81
TSCO.GB	Tesco	35,588	81
CURY.GB	Currys	1,806	81
ELPB.SE	Electrolux Professional B	1,999	79

Basing			
Stocks trading near pivot			
Symbol	Name	Mkt Val, USD (Mil)	Composite Rating
INCH.GB	Inchcape	3,888	89
ELPB.SE	Electrolux Professional B	1,999	79
AVOL.CH	Avolta Ag	8,149	68
OVIE.IT	Ovs Spa	1,128	54

European Weekly Summary

WILLIAM O'NEIL+CO.

Technology

O'Neil Focus List Constituent				Breaking Out This Week				Laggard				
O'Neil recommendations				Stocks breaking out from consolidation				Stocks below 200-DMA + 50-DMA in a downtrend				
Symbol	Name	Mkt Val, USD (Mil)	Focus List Since	Symbol	Name	Mkt Val, USD (Mil)	Composite Rating	Symbol	Name	Mkt Val, USD (Mil)	A/D, Nmbr	Rtg, Cur Wk
NEMX.DE	Nemetschek (Xet)	17,081	89	HUBN.CH	Huber+suhrner 'R'	2,176	95	THQ.SE	Embracer Group B	2,394		-4
SAPX.DE	Sap (Xet)	3,71,610	81	IDR.ES	Indra Sistemas	7,868	93	REY.IT	Reply	6,237		-8
								HEMN.SE	Hemnet Group	2,698		-32
								CCC.GB	Computacenter	3,237		-15
								TMVX.DE	Teamviewer (Xet)	1,893		-29
								BYIT.GB	Bytes Technology Group	1,078		-33
								TEL.SE	Telia Company	13,651		-28
								NOK1.FI	Nokia	27,235		-35
								NGP.DK	Netcompany Group	1,982		-30
								BIC.FR	Bic	2,618		-36
								FNTNX.DE	Freenet (Xet)	3,803		-28
								CLNX.ES	Cellnex Telecom	26,635		-13
								TEMN.CH	Temenos N	5,214		-21
								NB2X.DE	Northern Bitcoin (Xet)	1,665		-28

Top Rated			
Stocks Ranked by best Composite rating			
Symbol	Name	Mkt Val, USD (Mil)	Composite Rating
AAF.GB	Airtel Africa	9,159	99
CICN.CH	Cicor Technologies	1,060	99
NORB.NO	Norbit	1,301	99
RLAB.SE	Raysearch Laboratories B	1,042	98
BT.A.GB	Bt Group	26,203	98
IOSX.DE	Ionos Grp	6,620	98
PROS.NL	Prosus N	1,34,647	98
AG1X.DE	Auto1 Grp (Xet)	6,621	97
FORT.SE	Fortnox Ab	5,712	97
ALML.SE	Beijer Alma B	1,352	96
HUBN.CH	Huber+suhrner 'R'	2,176	95
ORA.FR	Orange	40,395	95
BCG.GB	Baltic Classifieds Grp	2,363	95
HY9H.DE	Hynix Semiconductor	1,49,707	95
SETB.SE	Sectra B	6,858	94

Basing			
Stocks trading near pivot			
Symbol	Name	Mkt Val, USD (Mil)	Composite Rating
ANOD.SE	Addnode Group B	1,662	94
AMS.ES	Amadeus It Group	37,782	81
ALSN.CH	Also Holding	4,372	49

European Weekly Summary

WILLIAM O'NEIL+CO.

Transportation

O'Neil Focus List Constituent				Breaking Out This Week				Laggard			
O'Neil recommendations				Stocks breaking out from consolidation				Stocks below 200-DMA + 50-DMA in a downtrend			
Symbol	Name	Mkt Val, USD (Mil)	Focus List Since	Symbol	Name	Mkt Val, USD (Mil)	Composite Rating	Symbol	Name	Mkt Val, USD (Mil)	A/D, Nmbr Rtg, Cur Wk
CTT.PT	Ctt Correios De Portugal	1,242		CTT.PT	Ctt Correios De Portugal	1,242	97	LOGI.ES	Logista Hold	4,327	-4
IAG.GB	Intl.Cons.Airl.Gp.(Cdi)	23,242		IAG.GB	Intl.Cons.Airl.Gp.(Cdi)	23,242	89	KNIN.CH	Kuehne Und Nagel International	26,281	-3
CAF.ES	Const Y Auxiliar De Ferr	2,000		CAF.ES	Const Y Auxiliar De Ferr	2,000	83	WIZZ.GB	Wizz Air Holdings	1,441	-7
								SRAIL.CH	Stadler Rail	2,616	-3

Top Rated			
Stocks Ranked by best Composite rating			
Symbol	Name	Mkt Val, USD (Mil)	Composite Rating
CTT.PT	Ctt Correios De Portugal	1,242	97
IDL.FR	Id Logistics Group	3,364	92
DSADK	A P Moller Maersk A	18,967	90
UTA.FR	Air France-Klm	3,373	89
DSB.DK	A P Moller Maersk B	11,924	89
IAG.GB	Intl.Cons.Airl.Gp.(Cdi)	23,242	89
NAS.NO	Norwegian Air Shuttle	1,810	88
RYA.IE	Ryanair Holdings	29,990	88
ALD.FR	Ayvens	9,321	85
CAF.ES	Const Y Auxiliar De Ferr	2,000	83
PST.IT	Poste Italiane	27,461	79
HOAH.NO	Hoegh Autoliners	1,837	74
SNL.NO	Stolt-Nielsen	1,713	72
WWL.NO	Wallenius Wilhelmsen	3,723	71

Basing			
Stocks trading near pivot			
Symbol	Name	Mkt Val, USD (Mil)	Composite Rating
DSADK	A P Moller Maersk A	18,967	90
UTA.FR	Air France-Klm	3,373	89
DSB.DK	A P Moller Maersk B	11,924	89
NAS.NO	Norwegian Air Shuttle	1,810	88

European Weekly Summary

WILLIAM O'NEIL+CO.

Utility

O'Neil Focus List Constituent				Breaking Out This Week				Laggard			
O'Neil recommendations				Stocks breaking out from consolidation				Stocks below 200-DMA + 50-DMA in a downtrend			
Symbol	Name	Mkt Val, USD (Mil)	Focus List Since	Symbol	Name	Mkt Val, USD (Mil)	Composite Rating	Symbol	Name	Mkt Val, USD (Mil)	A/D, Nmbr Rtg, Cur Wk
				VH2X.DE	Friedrich Vorwerk Grp	1,564	99	VERB.AT	Verbund	12,896	-7

IRE.IT Iren 3,848 73

Top Rated			
Stocks Ranked by best Composite rating			
Symbol	Name	Mkt Val, USD (Mil)	Composite Rating
VH2X.DE	Friedrich Vorwerk Grp	1,564	99
ELI.BE	Elia Group	12,279	93
BKW.CH	Bkw	11,753	92
IG.IT	Italgas	8,209	92
UU.GB	United Utilities Group	10,057	86
ENEL.IT	Enel	94,916	86
DRX.GB	Drax Group	3,229	85
REN.PT	Ren Redes Energeticas Nacionais	2,402	81
SVT.GB	Severn Trent	10,627	81
TEP.GB	Telecom Plus	2,144	80
EOANX.DE	E On (Xet)	49,343	79
CNA.GB	Centrica	10,164	77
VIE.FR	Veolia Environ	26,673	77
ELE.ES	Endesa	32,391	77
RWEX.DE	Rwe (Xet)	31,575	76

Basing			
Stocks trading near pivot			
Symbol	Name	Mkt Val, USD (Mil)	Composite Rating

Disclaimer

U.S. FOCUS LIST & GLOBAL FOCUS LISTS DEVELOPED, EMERGING & FRONTIER MARKETS

The U.S. Focus List and Global Focus List for Developed, Emerging, and Frontier Markets seek to identify equity ideas for further research for institutional investors. Investors, before making investment decisions, should review and evaluate additional information, such as a company's SEC filings, business model, industry fundamentals, management team, and products and services.

EXPLANATION OF PERFORMANCE CHARTS FOR U.S. FOCUS LIST & GLOBAL FOCUS LISTS

William O'Neil + Co. Incorporated is an SEC Registered Investment Adviser. Employees of William O'Neil + Company and its affiliates may now or in the future have positions in securities mentioned in this communication. Our content should not be relied upon as the sole factor in determining whether to buy, sell, or hold a stock. For important information about reports, our business, and legal notices (including our Privacy Policy), please go to williamoneil.com/legal.

Performance results do not represent actual trading, and may not reflect the impact that material economic and market factors might have had on the investment decision-making process if actually managing client money. There is substantial speculative risk in most international stocks. Past performance is not necessarily an indication of future performance. Performance computations for the U.S. Focus List and Global Focus Lists reflect a time weighted rate of return. All holdings are rebalanced to equal dollar amounts daily. Dividends are not considered in computations. Commissions used in calculations are 50 basis points for stocks in the Global Focus List Emerging Markets and 20 basis points for stocks in the Global Focus List Developed Markets. Percent gains and losses are calculated for all issues that remain on the "Buy Recommendations" at the end of the week. For issues that were added to the "Buy Recommendations" intra-week, the basis used to calculate the percent change is the price noted when the issue appeared as a "Buy Recommendation" in both the U.S. Focus List or Global Focus List Confidential Alerts. For issues that were "Removed" intra-week, the selling price used to calculate the percent change is the price noted when the issue appeared as "Removed" in the U.S. Focus List or the Global Focus List Confidential Alerts. The iShares MSCI EAFE Index Fund seeks to provide investment results that correspond generally to the price and yield performance, before fees and expenses, of publicly traded securities in the European, Australasian and Far Eastern markets, as measured by the MSCI EAFE Index.

The iShares MSCI Emerging Markets Index Fund seeks to provide investment results that correspond generally to the price and yield performance, before fees and expenses, of publicly traded securities in emerging markets, as represented by the MSCI Emerging Markets Index.

The benchmark is the S&P 500 Index, which is a market-capitalization weighted index containing the 500 most widely held companies (400 industrial, 20 transportation, 40 utility and 40 financial companies) chosen with respect to market size, liquidity, and industry. The volatility of the S&P 500 Index may be materially different from that of the strategy depicted, and the holdings in the strategy may differ significantly from the securities that comprise the S&P 500 Index. The S&P 500 Index is calculated on a total return basis with dividends reinvested and is not assessed a management fee.

European Weekly Summary

WILLIAM **O'NEIL**+CO.

All charts in this presentation are intended to be used as a tool to assist investors in identifying equity ideas worthy of further review. Charts provide certain current and historical information, but are not a substitute for a comprehensive analysis of individual stocks, and should not be relied on as the sole factor in determining whether to buy, sell or hold. Nothing in this communication should be construed as an offer to buy or sell any security.

Disclosures

William O'Neil + Co. Incorporated is an SEC Registered Investment Adviser. Employees of William O'Neil + Co. and its affiliates may now or in the future have positions in securities mentioned in this communication. Our content and stock charts, which provide certain current and historical information, should not be relied upon as the sole factor in determining whether to buy, sell, or hold a stock. The charts provide certain current and historical information, but are not a substitute for a comprehensive analysis of the individual stocks. For important information about reports, our business, and legal notices (including our Privacy Policy), please go to williamoneil.com/legal

© 2025, William O'Neil + Company, Inc. All Rights Reserved.

No part of this material may be copied or duplicated in any form by any means or redistributed without the prior written consent of William O'Neil + Co.