

MGMT owns --
EPS Rank 65

+ 4% from Pivot in 1 Week

Europe Long +0.00% in 0 WKS

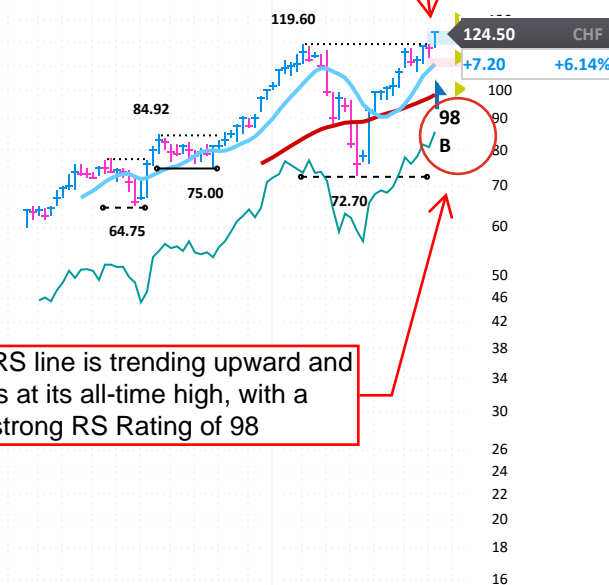
OH 0% LOG (Fixed) PRICE

ANNUAL - DEC END	2016	2017	2018	2019	2020	2021	2022	2023	2024	2025 Estimate	2026 Estimate
EPS CHF						-0.59	-0.40	-0.22	0.86	2.22	3.18
CASH FLOW/SHR CHF						0.75	0.45	0.63	1.81	158%	43%
PRETAX MARGIN %						-2%	-1%	0%	7%		
RETURN ON EQUITY %							-2%	-1%	4%		
SALES % CHANGE							15%	2%	6%		
SALES (MIL) CHF						3,124	3,591	3,668	3,884		
WEEKLY	May 16	May 23	May 30	Jun 6	Jun 13	Jun 20	Jun 27	Jul 4	Jul 8		
DATAGRAPH RATING	64	68	78	79	77	73	76	74	74		
AVG DAILY VOL (000)	487	448	459	444	454	467	429	432	423		
UP/DOWN VOLUME	0.7	0.9	0.9	2.2	2.0	2.8	3.8	3.7	3.6		
ACCUM/DIST RATING	10	15	20	39	20	16	22	8	16		
RELATIVE STRENGTH	75	78	84	97	95	92	97	97	98		
GROUP RANK	49	26	18	11	13	39	32	41	38		

Upward revision of strong EPS growth estimates for 2025 and 2026

Sharp improvement in demand over the last few weeks. The stock is under accumulation for the last nine weeks

The stock broke out of a stage-one 21-week consolidation base. It is actionable here. Support is at its 10-DMA (-5%), followed by its 21-DMA (-8%)



RS line is trending upward and is at its all-time high, with a strong RS Rating of 98

Increasing institutional sponsorship (+260% y/y)

FINANCIALS	Sep 20	Dec 20	Mar 21	Jun 21	Sep 21	Dec 21	Mar 22	Jun 22	Sep 22	Dec 22	Mar 23	Jun 23	Sep 23	Dec 23	Mar 24	Jun 24	Sep 24	Dec 24	Mar 25	Jun 25	P/E	142
EPS (CHF)						-0.54				-0.37		0.01		-0.19		0.16		0.61		0.94e		
EPS % CHANGE										+31%						+1,500%		+421%		+487%		
SALES (MIL CHF)						2,854.0				3,320.5		1,643.1		1,549.1		1,761.0		1,739.9		1,879.2e		
SALES % CHANGE										+16%						+7%		+12%		+7%		
EPS % SURPRISE																-12.0%						
MARGIN AFTER TAX						-4.5%				-2.6%		+0.2%		-2.9%		+2.1%		+8.3%				
FUNDS															238	298	624	891		1,074		