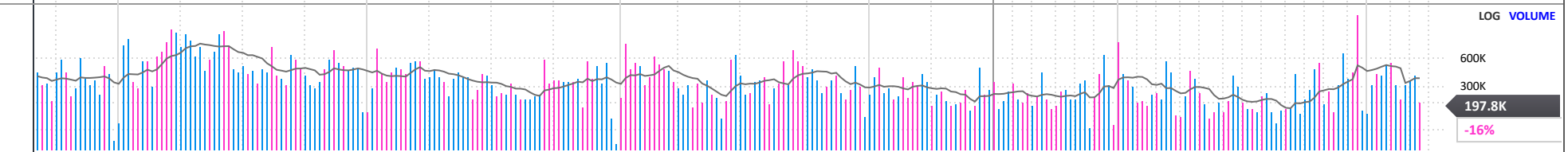
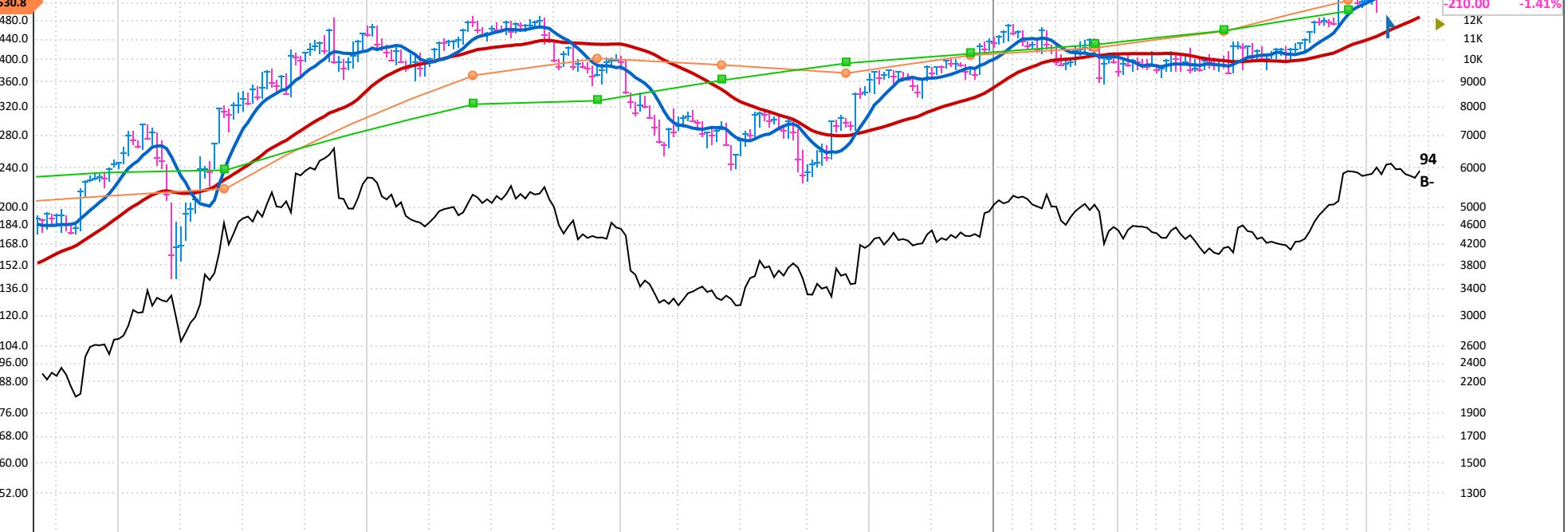


EPS 25x games-workshop.co.uk Lenton, UNITED KINGDOM Inc 1991 MGMT owns -- OH -2% LOG (Fixed) PRICE

Games Workshop Group Plc engages in the business of designing and manufacturing miniature figures and games. The firm also distributes products to retail stores, independent retailers, and online through global web stores. It operates under the Core and Licensing segments. The Core segment includes design, manufacture, and sales of fantasy miniatures. The Licensing segment focuses on the development of digital content for animation and TV. The company was founded in 1975 and is headquartered in Lenton, the United Kingdom. [LESS](#)

ANNUAL - MAY END	2016	2017	2018	2019	2020	2021	2022	2023	2024	2025 Estimate	2026 Estimate
EPS GBX	42.10	95.10	184.31	202.91	218.70	372.71	391.31	409.66	458.78	525.62	15%
CASH FLOW/SHR GBX	75.62	136.03	214.06	221.37	319.53	403.62	370.21	589.40	602.54	Earnings Growth Rate	
PRETAX MARGIN %	14%	24%	34%	32%	33%	41%	38%	36%	39%	2022-24	9% (5 Stability)
RETURN ON EQUITY %	26%	53%	79%	69%	59%	74%	60%	57%	62%	2020-24	17% (12 Stability)
SALES % CHANGE	-1%	34%	40%	16%	5%	37%	12%	14%	12%	COMP RATING	98
SALES (MIL) GBX	12K	16K	22K	26K	27K	37K	41K	47K	53K	INV T/O	4.1x 73
SMR RATING A											
WEEKLY	Jan 24	Jan 31	Feb 7	Feb 14	Feb 21	Feb 28	Mar 7	Mar 14	Mar 19	DEBT %	
DATAGRAPH RATING	78	78	79	78	77	77	77	76	76	2022-24	17%
AVG DAILY VOL (000)	101	108	107	104	100	96	71	74	75	TAX RATE	2022-24
UP/DOWN VOLUME	0.7	0.8	0.7	0.6	0.7	0.8	1.7	1.6	1.6	BACKLOG	2022-24
ACCUM/DIST RATING	-11	-2	-13	-5	-9	5	21	19	9	R & D	--
RELATIVE STRENGTH	93	94	94	94	92	94	95	94	96	DIV GBX	525.00 (3.7%)
GROUP RANK	4	4	5	6	5	5	2	2	4	BETA	1.12(16.00)
2024 EMPLOYEES 2,950 (9%)											
BK VAL 18.66x '24											
DIV GR RT +31% (12)											
ALPHA 0.10 (0.06)											



FINANCIALS	May 20	Aug 20	Nov 20	Feb 21	May 21	Aug 21	Nov 21	Feb 22	May 22	Aug 22	Nov 22	Feb 23	May 23	Aug 23	Nov 23	Feb 24	May 24	Aug 24	Nov 24	Feb 25	P/E
EPS (GBX)	218.70				372.71		217.17		174.18		202.44		207.22		216.90		241.89		288.88		27
EPS % CHANGE					+70%						-7%		+19%		+7%		+17%		+33%		2025 Est.: 27.9
SALES (MIL GBX)	26,970.0				36,950.0		19,150.0		22,330.0		22,660.0		24,420.0		24,770.0		27,800.0		29,950.0		2026 Est.:
SALES % CHANGE					+37%						+18%		+9%		+9%		+14%		+21%		5-yr High: 41
EPS % SURPRISE																					5-yr Low: 15
FUNDS	358	402	440	482	447	436	416	421	422	413	433	461	482	512	534	512	529	520	558		vs Ind. Avg: 0.2x
SHARES HELD BY FUNDS	16M	16M	16M	17M	17M	17M	17M	17M	18M	17M	18M	18M	18M	17M	18M	18M	18M	18M	18M		