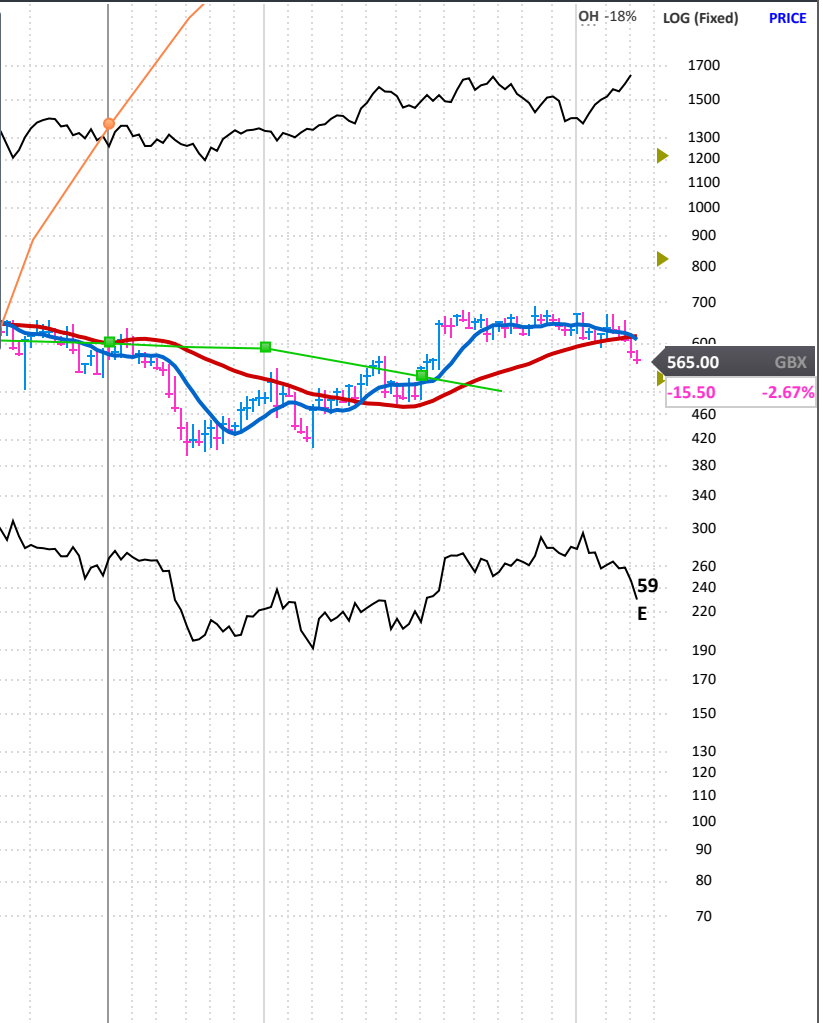


441757618381 drax.com Selby, UNITED KINGDOM Inc 2005 MGMT owns -- OH -18% LOG (Fixed) PRICE

EPS 19x
 137.5
 78.95
 68.42
 63.16
 57.89
 52.63
 47.37
 42.11
 36.84
 31.58
 26.32
 24.21
 22.11
 20.00
 17.89
 15.79
 12.63
 11.58
 10.00
 8.95
 7.89
 6.84
 6.32
 5.79
 5.26
 4.74
 4.21
 3.68

ANNUAL - DEC END	2016	2017	2018	2019	2020	2021	2022	2023	2024	2025 Estimate	2026 Estimate
EPS GBX	48.00	-41.27	5.02	0.13	-39.79	20.00	21.25	142.76	137.50	107.83	-22%
CASH FLOW/SHR GBX	46.62	73.08	74.59	99.77	77.17	74.29	50.12	207.24			
PRETAX MARGIN %	7%	-6%	0%	0%	-6%	2%	1%	10%	12%	137%	(36 Stability)
RETURN ON EQUITY %	11%	-9%	1%	-1%	-13%	4%	7%	34%	26%	281%	(99 Stability)
SALES % CHANGE	-4%	25%	15%	5%	-5%	22%	58%	-4%	-22%		
SALES (MIL) GBX	295K	369K	424K	446K	424K	517K	816K	784K	608K		
WEEKLY	Jan 17	Jan 24	Jan 31	Feb 7	Feb 14	Feb 21	Feb 28	Mar 7	Mar 13		
DATAGRAPH RATING	57	53	59	57	56	59	57	39	43	2022-24	116%
AVG DAILY VOL (000)	1,082	1,019	1,176	1,172	1,262	1,260	1,308	1,461	1,527	2022-24	-6%
UP/DOWN VOLUME	0.7	0.6	1.0	1.3	1.1	1.2	1.1	0.8	0.8	2022-24	30%
ACCUM/DIST RATING	-23	-32	10	4	12	10	-28	-46	-50		
RELATIVE STRENGTH	80	58	65	79	69	84	70	50	59	R & D	BK VAL 1.17x '24
GROUP RANK	103	122	128	129	130	132	132	136	136	DEBT %	2022-24 116%
										TAX RATE	2022-24 -6%
										BACKLOG	2022-24 30%
										COMP RATING	46
										SMR RATING	C
										INV T/O	14.4x 86
										BETA	0.82(9.00)
										ALPHA	0.05 (0.03)



565.00 GBX
 -15.50
 -2.67%

LOG VOLUME
 9M
 4.4M
 -27%
 1M

FINANCIALS	20	Jun 20	Sep 20	Dec 20	Mar 21	Jun 21	Sep 21	Dec 21	Mar 22	Jun 22	Sep 22	Dec 22	Mar 23	Jun 23	Sep 23	Dec 23	Mar 24	Jun 24	Sep 24	Dec 24	Mar 25
EPS (GBX)		-14.04		-25.75		6.18		13.82				21.25		61.81		80.95		88.00		49.50	
EPS % CHANGE						+144%		+154%										+42%		-39%	
SALES (MIL GBX)		220,530.0		202,970.0		217,760.0		299,630.0			815,920.0		396,440.0		387,800.0			306,280.0		301,840.0	
SALES % CHANGE						-1%		+48%										-23%		-22%	
EPS % SURPRISE		+5.9%				-18.9%								+13.4%							
FUNDS	61	285	289	330	357	384	438	474	515	527	547	537	527	524	520	493	475	466	510	499	
SHARES HELD BY FUNDS		231M	216M	220M	207M	214M	225M	228M	221M	215M	211M	209M	214M	207M	212M	223M	223M	218M	214M	205M	

P/E 4
 2025 Est.: 5.2
 2026 Est.:
 5-yr High: 2K
 5-yr Low: 3
 vs Ind. Avg: 0.2x