

442079753131 3i.com London, UNITED KINGDOM Inc 1945 MGMT owns --

3i Group plc engages in the private equity and venture capital business. It operates through the following segments: Private Equity, Infrastructure, and Scandlines. The Private Equity segment is involved in investment and asset management to generate capital returns. The Infrastructure segment includes investing in economic infrastructure and greenfield projects in developed economies. The Scandlines segment focuses on delivering long term capital returns. The company was founded in 1945 and is headquartered in London, the United Kingdom. [LESS](#)

ANNUAL - MAR END	2016	2017	2018	2019	2020	2021	2022	2023	2024	2025 Estimate	2026 Estimate
EPS GBX	85.60	164.35	151.70	128.32	22.11	192.38	415.38	475.03	397.92	584.18	47%
CASH FLOW/SHR GBX	-3.96	-2.90	-9.91	-25.73	60.23	-6.73	13.63	19.27	39.61		
PRETAX MARGIN %	427%	393%	374%	319%	122%	779%	563%	755%	348%	2022-24 9% (11 Stability)	Sales Growth Rate 36%
RETURN ON EQUITY %	19%	30%	23%	17%	3%	22%	37%	31%	21%	2020-24 59% (65 Stability)	47%
SALES % CHANGE	-38%	109%	3%	-3%	-54%	35%	200%	-15%	82%	COMP RATING 97	SMR RATING --
SALES (MIL) GBX	19K	39K	40K	39K	18K	24K	71K	61K	110K	INVT/O --	
WEEKLY	17 Jan	24 Jan	31 Jan	7 Feb	14 Feb	21 Feb	28 Feb	7 Mar	12 Mar	2022-24	2022-24
DATAGRAPH RATING	67	68	71	70	70	68	71	70	71	TAX RATE 2022-24	6%
AVG DAILY VOL (000)	1,668	1,635	1,648	1,522	1,445	1,372	1,336	1,338	1,476	BACKLOG 2022-24	0.32%
UP/DOWN VOLUME	1.4	1.6	1.7	1.5	1.3	1.6	1.2	1.2	1.2	R & D	BK VAL 1.80x '24
ACCUM/DIST RATING	7	17	36	46	40	41	8	-14	-7	DIV GBX 65.00 (1.7%)	DIV GR RT +14% (5)
RELATIVE STRENGTH GROUP RANK	92	93	93	94	94	94	93	93	93	BETA 1.18 (30.00)	ALPHA 0.09 (0.06)
	53	45	35	22	31	37	30	29	34	2024 EMPLOYEES 273 (-6%)	

Strong EPS Rank 95

Strong Composite Rating of 97

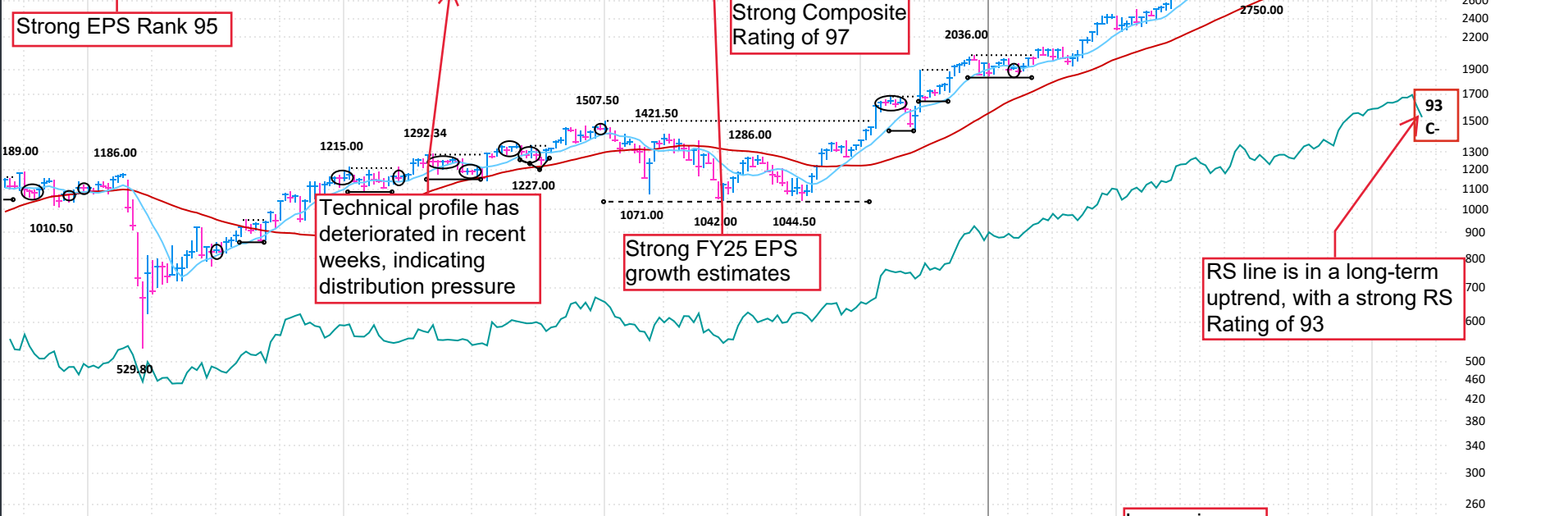
Technical profile has deteriorated in recent weeks, indicating distribution pressure

Strong FY25 EPS growth estimates

RS line is in a long-term uptrend, with a strong RS Rating of 93

The stock pulled back in recent weeks and broke below its 50-DMA (GBX 3,866). It is currently taking support at the 100-DMA (GBX 3,687). Look for a retake of the 50-DMA to accumulate positions

Increasing institutional sponsorship



FINANCIALS	'20	Jun, 20	Sep, 20	Dec, 20	Mar, 21	Jun, 21	Sep, 21	Dec, 21	Mar, 22	Jun, 22	Sep, 22	Dec, 22	Mar, 23	Jun, 23	Sep, 23	Dec, 23	Mar, 24	Jun, 24	Sep, 24	Dec, 24	Mar, 25	P/E	
EPS (GBX)	0		130.14		62.30		227.42		187.97		182.72		292.31		173.50		224.40		212.22				9
EPS % CHANGE	%		+66%		+211%		+75%		+202%		-20%		+56%		-5%		-23%		+22%				2025 Est.: 6.4
EPS % SURPRISE							+15.9%				+27.9%						-23%					2026 Est.: 37	
SALES (MIL GBX)	0		8,300.0		15,500.0		13,400.0		58,000.0		10,300.0		50,400.0		11,000.0		99,200.0		10,200.0				5-yr High: 37
SALES % CHANGE	%		-39%		+288%		+61%		+274%		-23%		+558.3%		+7%		+97%		-7%				5-yr Low: 2
MARGIN AFTER TAX	%		+1,510.8%		+387.7%		+1,639.6%		+313.1%		+1,707.8%		+558.3%		+1,520.0%		+218.1%		+2,007.8%				vs Ind. Avg: 0.5x
FUNDS	1	1,152	1,205	1,276	1,362	1,409	1,437	1,475	1,475	1,490	1,461	1,528	1,587	1,776	1,837	1,934	2,030	2,108	2,089				