

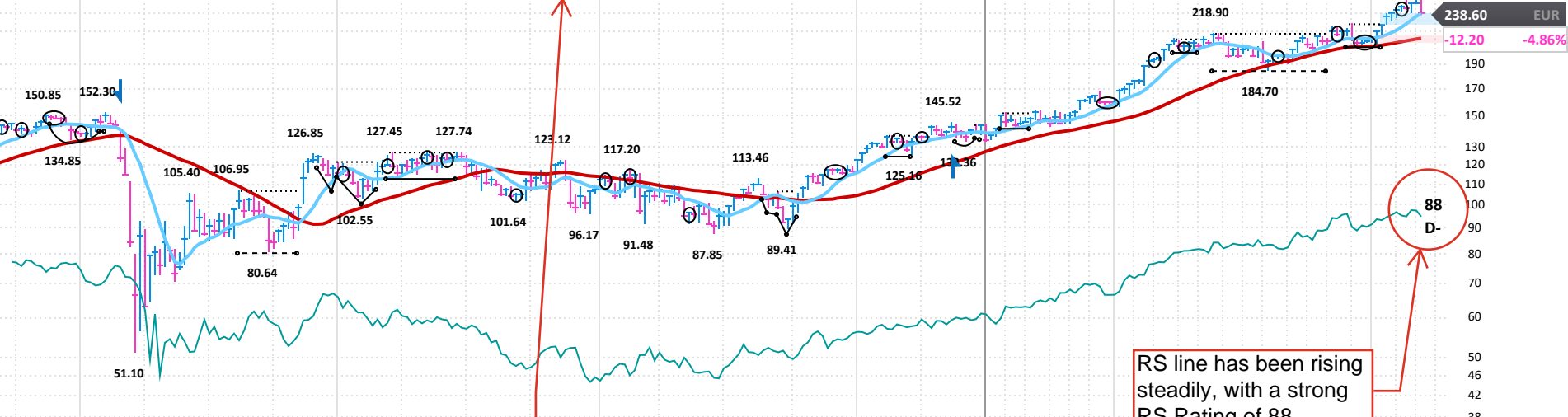
33140608080 safran-group.com Paris, FRANCE Inc 1956 MGMT owns -- +4% from Pivot in 8 Weeks

Safran SA engages in the design, manufacture, and sale of aircraft, defense, and communication equipment and technologies. MORE

ANNUAL - DEC END	2016	2017	2018	2019	2020	2021	2022	2023	2024	2025 Estimate	2026 Estimate
EPS EUR	4.58	9.06	2.98	5.69	0.83	0.10	-5.76	8.24	-1.60	8.10	606%
CASH FLOW/SHR EUR	5.86	6.59	7.04	7.23	4.24	5.54	8.31	9.90			
PRETAX MARGIN %	13%	32%	6%	13%	2%	0%	-18%	18%	-4%		22%
RETURN ON EQUITY %	30%	47%	12%	20%	3%	0%	-21%	31%	-6%		7%
SALES % CHANGE	2%	-1%	28%	19%	-34%	-9%	29%	21%	17%		
SALES (MIL) EUR	16K	16K	21K	25K	17K	15K	20K	24K	28K		

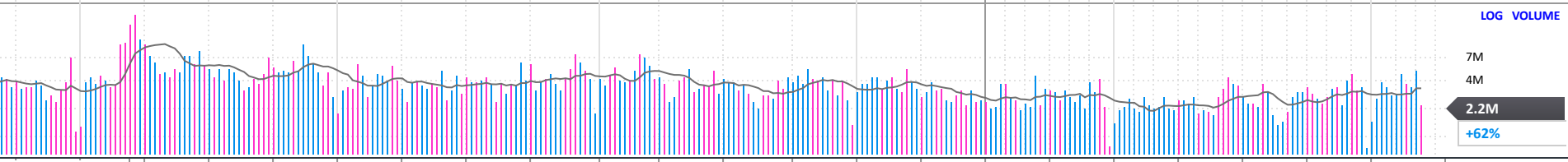
WEEKLY	Jan 17	Jan 24	Jan 31	Feb 7	Feb 14	Feb 21	Feb 28	Mar 7	Mar 11	DEBT %	TAX RATE	BACKLOG	R & D	DIV EUR	BETA	2024 EMPLOYEES
DATAGRAPH RATING	62	63	64	63	64	63	63	65	64	2022-24	2022-24	2022-24	4.90%	2.20	0.95(34.00)	100,000
AVG DAILY VOL (000)	623	617	619	603	642	617	628	675	706	2022-24	2022-24	---		0.90%		
UP/DOWN VOLUME	1.1	1.2	1.3	1.4	1.3	1.3	1.2	1.3	1.2	55%	43%	---				
ACCUM/DIST RATING	16	22	20	25	22	6	6	-8	-25	21%						
RELATIVE STRENGTH	81	86	88	88	87	84	89	89	88							
GROUP RANK	18	16	18	24	27	21	21	18	13							

The stock pulled back 10% from its 52-week high and is testing support at its 50-DMA (-1%). Next support is at its 100-DMA (-5%). Wait for a high-volume bounce off its 50-DMA to accumulate more positions



Mixed technical ratings: Up/Down Volume ratio is constructive and reflects good demand for the stock. Acc/Dist Rating is weak. Group Rank 13 indicates strong investor interest

RS line has been rising steadily, with a strong RS Rating of 88



FINANCIALS	'20	Jun 20	Sep 20	Dec 20	Mar 21	Jun 21	Sep 21	Dec 21	Mar 22	Jun 22	Sep 22	Dec 22	Mar 23	Jun 23	Sep 23	Dec 23	Mar 24	Jun 24	Sep 24	Dec 24	Mar 25	P/E
EPS (EUR)	-0.80			1.62		1.58		-1.48		-8.81		3.07		4.43		3.81		0.13		-1.74		2025 Est.: 29.4
EPS % CHANGE	-124%			-32%		+297%		-191%		-658%		+307%		+150%		+24%		-97%		-146%		2026 Est.: 1K
SALES (MIL) EUR	8,902.0			7,729.0		6,769.0		8,364.0		8,675.0		10,848.0		11,129.0		12,522.0		13,204.0		14,512.0		5-yr High: 14
SALES % CHANGE	-28%			-40%		-24%		+8%		+28%		+30%		+28%		+15%		+19%		+16%		vs Ind. Avg:
EPS % SURPRISE	-20.0%			-28.2%		+114.0%		-43.6%		-17.1%		-37.8%		+6.6%		-23.7%		+47.3%		+13.0%		
MARGIN AFTER TAX	-3.8%			+9.0%		+10.0%		-7.5%		-43.4%		+12.0%		+16.7%		+12.6%		+0.4%		-5.0%		
FUNDS	9	1,360	1,305	1,390	1,366	1,356	1,298	1,291	1,298	1,302	1,300	1,346	1,417	1,474	1,527	1,632	1,701	1,742	1,779	1,797		