

European Weekly Summary

March 10, 2025

Key points:

- *The European markets took a pause this week, settling down 69 bps and tracing back to the rising 21-DMA. This marks the first weekly loss in the past 10 weeks. Although 10-DMA and the 21-DMA have caught up, the European index is still extended from the rising 50-DMA (4% below) and the mid- to long-term moving averages (6%–7% below). We recommend investors to be more cautious here while adding names considering the recent clustering of distribution. Book gains in stocks with are extended or breaking logical levels of support.*
- *Investors are monitoring developments in global trade as trade tensions remain high between the U.S., Canada, Mexico, and China as tariffs went into effect last week. The European Central Bank cut interest rates by 25 bps last week but growing focus of Germany on defense spending has raised the risk of a pause in April. Leadership in Europe is narrowing sharply with the number of breakouts plummeting to 105, less than a quarter of 426 two weeks prior and the lowest level since late December 2024. The number of stocks trading near pivot has also sunk sharply to a almost a quarter of mid-January highs and the lowest level since late December 2022. Meanwhile, the number of failed bases has jumped more than 4x since mid-February to 2,103, the highest level since March 2020.*
- *Last week among the major indices, Germany's DAX rose 2% and France's CAC was flat as they continue to trade above their key moving averages. The U.K.'s FTSE breached the near-term moving averages as it declined 1.5% and could test the 50-DMA (2% below). Most European indices are taking a pause after a sharp rise to start the year and pulling back to their near-term moving averages.*
- **European Focus List Update:**
 - *Actionable names in the Focus List include Games Workshop (GAW.GB; GAW:LN), Technogym (TGYM.IT; TGYM:IM), and 3i Group (III.GB; III:LN).*
 - **Addition:** None.
 - **Removal:** Swedish Orphan (SOBI.SE; SOBI SS), Galderma (GALD.CH; GALD SW), Pandora (PND.DK; PNDORA DC), Vimian Group (VIMG.SE, VIMIAN SS), WISE (WISE.GB; WISE LN), Eqt (EQT.SE; EQT SS), Swissquote (SQN.CH, SQN SW), Vitrolife (VITR.SE; VITR SS).

Indices Take a Pause As Uncertainty on Tariffs Has Started to Weigh on Global Equities

- Denmark was downgraded to a Correction after breaching all its key support levels. Earlier Denmark, along with the U.K, France, Finland, Sweden, and Italy were shifted to Under Pressure following the breach of their 21-DMA. The Netherlands and Norway were also shifted to Under Pressure on breaking their 50-DMA
- Portugal was Upgraded to a Confirmed Uptrend after registering its follow-through day on Friday after bouncing off the 21-DMA and retaking the 10-DMA
- Hence, we now have seven indices including Germany in a Confirmed Uptrend, eight Under Pressure, and Denmark in a Downtrend.
- The average distribution day count now stands at 4

Sectoral Performance

- On the sectoral front, Financial Services has started to crack, breaching all the near-term moving averages this week and is now testing support at the 100-DMA. Retail continues to lag, making lower lows and lower highs as it still faces resistance from its declining near-term moving averages. Similarly, Technology was struggling to hold its 50-DMA and has now breached the support level and could test the 100-DMA (2% below) and 200-DMA (1% below). Travel & Leisure, Autos, Oil and Gas, and Health Care are struggling to hold on to their key support levels.
- Chemicals has been the bright spot this week, rallying to new YTD highs this week. Banks also continued to trade constructively and made new highs this week. The Telecom sector, which has been trading constructively along its rising 10-DMA since late January, saw a sharp retreat to its 21-DMA this week before bouncing to reclaim the 10-DMA. Food and Beverages has rallied over 12% from its mid-January lows has reclaimed all its key support levels. Utilities, which also started to rally off the lows, still faces resistance 2% above.
- On our rotation charts, the Financial sector continues to outperform over both a 4- and 26-week period, along with Capital Equipment. Retail, which was in the first quadrant, is sharply losing momentum, along with Staples, Transportation, and Health Care. Utilities and Energy, both long-term laggards, are starting to outperform over a short duration along with the Cyclical sector.

Prepared by:

Tristan d'Aboville – Executive Director – Research Analyst, tristan.daboville@williamoneil.com | Direct: +44 20 3178 7125 | Mobile: +44 77 0344 5260

Tapan Asgaonkar –Equity Research Analyst, William O'Neil India asgaonkar.tapan@williamoneilindia.com

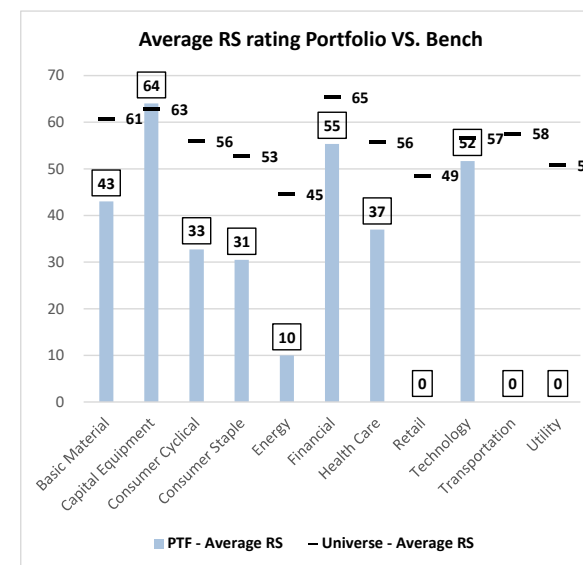
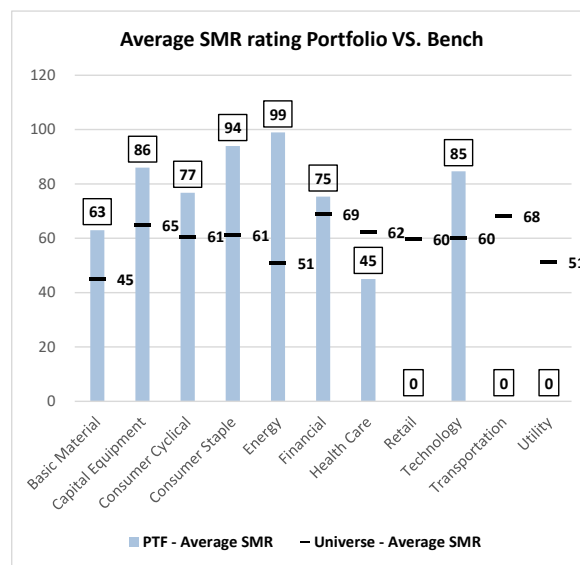
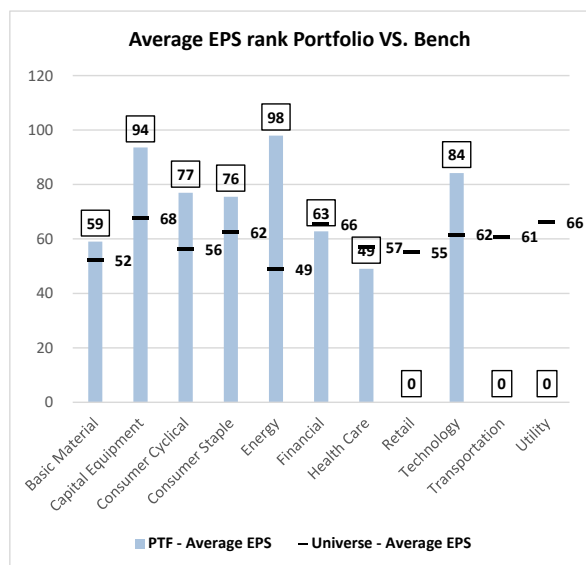
Suman Patra –Equity Research Analyst, William O'Neil India suman.patra@williamoneilindia.com

European Focus List Update

Addition: None

- **Removal:** Swedish Orphan (SOBI.SE; SOBI SS), Galderma (GALD.CH; GALD SW), Pandora (PND.DK; PNDORA DC), Vimian Group (VIMG.SE, VIMIAN SS), WISE (WISE.GB; WISE LN), Eqt (EQT.SE; EQT SS), Swissquote (SQN.CH, SQN SW), and Vitrolife (VITR.SE; VITR SS).

William O'Neil Focus List EPS, SMR and RS ratings vs. Benchmark



Source: William O'Neil

Sector Heat Map: Average Perf. - Market Cap Average Weighted

(Market Cap > \$1BN & ADV > \$1M)

Sectors	5 D	4 We	8 We	13 We	26 We	Y
Capital Equipment	3.9%	9.1%	14.7%	13.0%	26.5%	16.8%
Basic Material	3.2%	3.9%	11.1%	7.2%	11.3%	11.1%
Transportation	3.0%	7.1%	10.4%	6.2%	16.2%	8.1%
Consumer Staple	1.4%	6.8%	11.2%	8.3%	0.6%	9.4%
Financial	0.3%	5.2%	14.5%	14.7%	23.1%	15.9%
Technology	0.3%	0.3%	7.9%	6.3%	16.7%	8.8%
Health Care	0.1%	1.1%	6.2%	5.8%	-2.6%	9.3%
Utility	-1.4%	1.5%	4.6%	0.9%	-1.5%	3.5%
Energy	-2.8%	-3.2%	-2.5%	1.8%	-3.6%	2.2%
Consumer Cyclical	-2.8%	-1.1%	6.9%	7.4%	13.3%	6.6%
Retail	-3.2%	-2.1%	4.5%	-1.1%	8.9%	3.5%

Source: William O'Neil

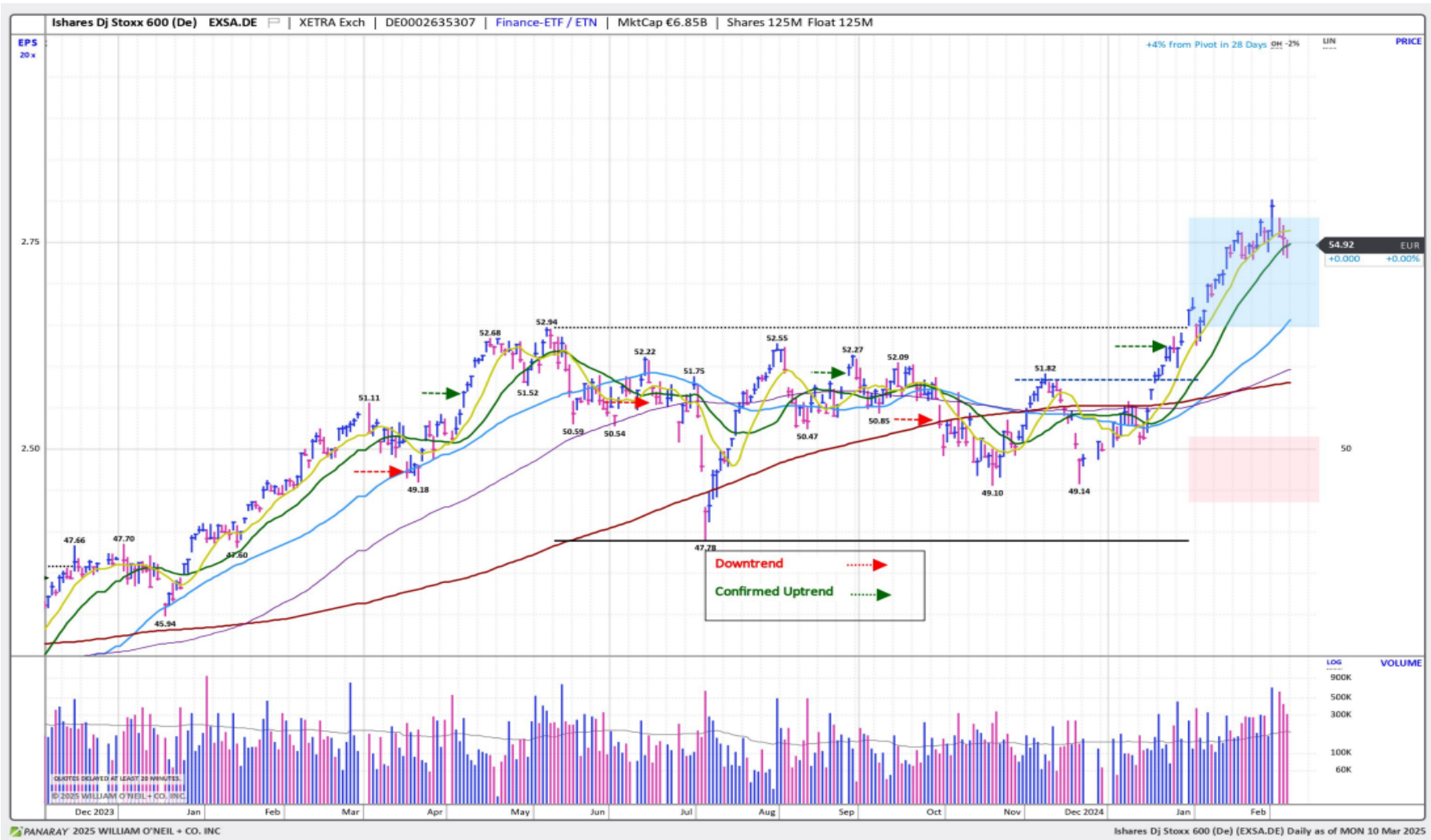
Market Condition

O'Neil Methodology

Country	Tickers	Market Condition	D- Day Count
France	0FRCAC40	UnderPressure	5
Germany	0DAXINDX	Confirmed Uptrend	5
UK	CUKX.GB	UnderPressure	7
Stoxx600	EXSA.DE	UnderPressure	6
Denmark	0DKKFXIN	Correction	n.a.
Ireland	0ISEQUIT	Confirmed Uptrend	2
Finland	0HEX25IN	UnderPressure	5
Norway	0OSLOOBX	UnderPressure	6
Sweden	0SWEDOMX	UnderPressure	6
Switzerland	0SWISSMI	Confirmed Uptrend	4
Austria	0ATXINDX	Confirmed Uptrend	4
Italy	EWI	UnderPressure	3
Portugal	0POPSI20	Confirmed Uptrend	0
Spain	0IBEX35I	Confirmed Uptrend	4
Belgium	0BGBEL20	Confirmed Uptrend	2
Netherlands	0AMSTEOE	UnderPressure	5
		AVERAGE D-DAY	4.3

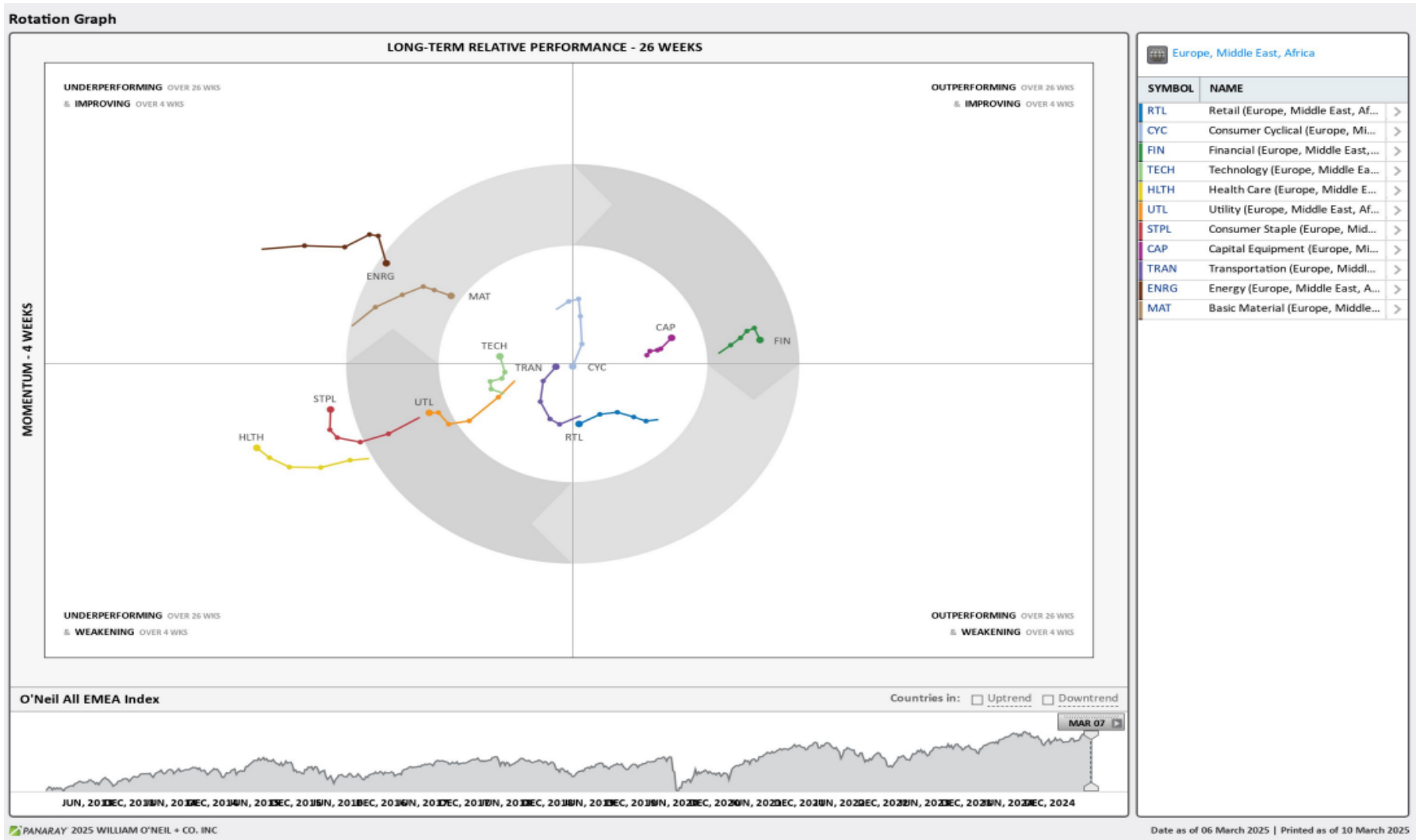
Source: William O'Neil

iShares Dj Stoxx 600 (EXSA.DE) – Daily Datagraph®



Source: William O'Neil

EMEA Rotation Chart



Source: William O'Neil

How To Read The Sector Card

European Focus List

O'Neil Recommendations

The **European Focus List (EFL)** is a proprietary list of long ideas that fit the fundamental and technical criteria of the O'Neil Methodology.

Outperforming

Stocks breaking out from consolidation

We recommend buying stocks at the **breakout level**. A breakout is a price movement of the security through an identified level of resistance (pivot point) after forming a consolidation base. Our proprietary chart patterns are based on over 50 years of our

Laggards

Stocks below 200-DMA + 50-DMA in a downtrend

Laggards are stocks showing technical weakness. We believe these stocks are laggards relative to their own domestic markets and, if owned, need to be reviewed carefully as they may be vulnerable to further downside risk and underperformance.

Top Rated

Stocks displaying the best Composite rating

The **Composite Rating** combines the EPS Rank, Relative Strength Rating, Industry Group Rank, SMR Rating, Accumulation/Distribution Rating, and the stock's percent off its 52-week high. More weight is placed on EPS Rank and Relative Strength Ratings. The resulting rating of technical and fundamental factors is compared against all other stocks in the trading country and assigned a rating from 1 to 99, with 99 being the best. A rating of 90 means the stock has outperformed 90% of all other stocks.

Early Basing

Stocks trading near pivot

Stock near pivot point (last line of resistance) with improving technical characteristics and above average fundamental profile based on O'Neil proprietary ratings and rankings.

Basic Material

O'Neil Focus List Constituent O'Neil recommendations				Breaking Out This Week Stocks breaking out from consolidation				Laggard Stocks below 200-DMA + 50-DMA in a downtrend			
Symbol	Name	Mkt Val, USD (Mil)	Focus List Since	Symbol	Name	Mkt Val, USD (Mil)	Composite Rating	Symbol	Name	Mkt Val, USD (Mil)	A/D, Nmbr Rtg, Cur Wk
				HENX.DE	Henkel (Xet)	21,898	80	NVG.PT	Navigator Comp	2,490	-32
				EVKX.DE	Evonik Industries (Xet)	10,925	73	BAKK.NO	Bakkafrost	2,941	-36
				SCB.DK	Schouw And	2,282	65	METB.FI	Metsa Board B	1,419	-10
								YCA.GB	Yellow Cake	1,210	-27

Top Rated Stocks Ranked by best Composite rating			
Symbol	Name	Mkt Val, USD (Mil)	Composite Rating
ALTR.PT	Altri Sgps	1,348	99
CEM.IT	Cementir Holding	2,369	98
GGP.GB	Greatland Gold	1,564	96
BOL.SE	Boliden Ord Shs	10,367	96
ALLM.SE	Alleima	2,245	95
HOC.GB	Hochschild Mining	1,314	92
VCT.FR	Vicat	2,393	90
NA.SE	Nolato B	1,435	89
AIR.FR	L Air Lqe.Sc.Anyme. Pour L Etur	112,966	89
FPEX.DE	Fuchs SE	2,626	87
ELKM.NO	Elkem	1,366	87
ACX.ES	Acerinox 'R'	3,144	85
FPE3X.DE	Fuchs Petrolub Pf. (Xet)	3,508	85
FRES.GB	Fresnillo	8,081	85
MT.NL	Arcelormittal	28,162	84

Basing Stocks trading near pivot			
Symbol	Name	Mkt Val, USD (Mil)	Composite Rating
HEN3X.DE	Henkel Pref. (Xet)	16,843	77
SOL.BE	Solvay	4,001	66
NK.FR	Imerys	3,019	45
YARA.NO	Yara International	7,790	45
VCT.GB	Victrex	1,179	42

Capital Equipment

O'Neil Focus List Constituent O'Neil recommendations				Breaking Out This Week Stocks breaking out from consolidation				Laggard Stocks below 200-DMA + 50-DMA in a downtrend			
Symbol	Name	Mkt Val, USD (Mil)	Focus List Since	Symbol	Name	Mkt Val, USD (Mil)	Composite Rating	Symbol	Name	Mkt Val, USD (Mil)	A/D, Nmbr Rtg, Cur Wk
RHMX.DE	Rheinmetall (Xet)	53,514	99	ALOT.FR	Alstom	12,130	95	PRY.IT	Prysmian	17,382	-27
RR.GB	Rolls-Royce Holdings	88,052	91	QQ.GB	Qinetiq Group	3,689	95	PUB.FR	Publicis Groupe	26,115	-5
REL.GB	Relx	88,364	76	SPIE.FR	Spie	7,594	94	ABBN.CH	Abb Ltd N	104,112	-47
SGM.FR	Safran	115,111	67	AND.AT	Andritz	7,008	92	NXS.FR	Nexans	4,513	-6
								WSG.NL	Wolters Kluwer	36,721	-52
								FUR.NL	Fugro C	1,777	-25
								CGCB.FI	Cargotec B	2,778	-22
								VSVS.GB	Vesuvius	1,314	-25
								BNZL.GB	Bunzl	13,081	-51
								SFSN.CH	Sfs Group	5,191	-19
								HDJ.NL	Arcadis	4,594	-30
								RSW.GB	Renishaw	2,615	-36
								IP.IT	Interpump Group	4,365	-23
								AHT.GB	Ashtead Group	25,360	-9
								WPP.GB	Wpp	8,902	-28
								PAGE.GB	Pagegroup	1,408	-45
								UMI.BE	Umicore	2,376	-20

Top Rated Stocks Ranked by best Composite rating				Basing Stocks trading near pivot			
Symbol	Name	Mkt Val, USD (Mil)	Composite Rating	Symbol	Name	Mkt Val, USD (Mil)	Composite Rating
TECE.FR	Technip Energies	5,737	99	GRNE.SE	Granges	1,455	99
KOG.NO	Kongsberg Gruppen	25,273	99	NHY.NO	Norsk Hydro	12,999	92
TECN.ES	Tecnicas Reunidas	1,302	99	ELIS.FR	Elis	5,641	89
HOTX.DE	Hochtief (Xet)	13,783	99	DANR.IT	Danieli & C Rsp	1,112	85
RHMX.DE	Rheinmetall (Xet)	53,514	99	VID.ES	Vidrala	3,684	84
IPG.IT	Webuild	3,724	99	DAN.IT	Danieli	1,455	83
GRNE.SE	Granges	1,455	99	ANAE.S	Acciona	7,067	83
AM@F.FR	Dassault Aviation	24,343	99	JUN3X.DE	Jungheinrich Pfs. (Xet)	1,745	83
SAAB.SE	Saab B	19,025	99	ENT.FR	Bouygues	14,612	82
8TRAX.DE	Traton Se (Xet)	20,693	98	SAXX.DE	Stroeer (Xet)	3,410	79
IVSO.SE	Invisio	1,905	98	TKF.NL	Tkh Group	1,767	77
DPLM.GB	Diploma	7,426	98	KGXX.DE	Kion Group (Xet)	6,359	69
ALLG.AT	Porr	1,119	98	BOY.GB	Bodycote	1,537	60
LAGR.SE	Lagercrantz Group B	4,287	97				
GBFX.DE	Bilfinger Berger (Xet)	2,742	97				

Consumer Cyclical

O'Neil Focus List Constituent				Breaking Out This Week				Laggard			
O'Neil recommendations				Stocks breaking out from consolidation				Stocks below 200-DMA + 50-DMA in a downtrend			
Symbol	Name	Mkt Val, USD (Mil)	Focus List Since	Symbol	Name	Mkt Val, USD (Mil)	Composite Rating	Symbol	Name	Mkt Val, USD (Mil)	A/D, Nnbr Rtg, Cur Wk
GAW.GB	Games Workshop	6,166	98	DHG.IE	Dalata Hotel Group	1,246	92	COA.GB	Coats Group	1,722	-18
RMS.FR	Hermes Intl.	288,685	93	BREE.GB	Breedon Group	2,163	90	BTG4.DE	Bertelsmann Gsh.15.00%	84,705	-42
LOTG.IT	Lottomatica Group	4,460	89	GEBN.CH	Geberit 'R'	23,198	74	EVOG.SE	Evolution	16,844	-25
TGYM.IT	Technogym	2,445	79					JET2.GB	Jet2	3,757	-8
BOSSX.DE	Boss (Hugo) (Xet)	3,252	79					TRN.GB	Trainline Plc.	1,754	-45
MONC.IT	Moncler	18,453	75					MUGR.SE	Munters Group	2,317	-41
ADSX.DE	Adidas (Xet)	46,102	61					LFDJ.FR	La Francaise Des Jeux	6,624	-32
								VOCB.SE	Volvo Car B	6,694	-27
								P911X.DE	Dr Ing Hc F Porsche Ag (Xet)	27,202	-8
								FUTR.GB	Future	1,193	-25
								PUMX.DE	Puma (Xet)	4,737	-8
								WTB.GB	Whitbread	5,735	-29
								GEN.GB	Genuit Group	1,169	-22
								LIAB.SE	Lindab International	1,637	-5
								NIBE.SE	Nibe Industrier	7,373	-26
								SCHB.NO	Schibsted B	3,415	-31
								TEGX.DE	Tag Immobilien (Xet)	2,316	-29
								BKG.GB	Berkeley Group Hdq.(The)	4,693	-19
								SCH.NO	Schibsted A	2,685	-30
								PSN.GB	Persimmon	4,871	-14
								AFR.ES	Cie Automotive	2,946	-34
								HUSB.SE	Husqvarna B	2,700	-11
								BWY.GB	Bellway	3,509	-14
								TW.GB	Taylor Wimpey	5,219	-33
								DOMT.SE	Dometic Group	1,542	-34
								DAE.CH	Daetwyler 'I'	1,827	-13
								AML.GB	Aston Martin Lagonda Global H	1,017	-25

Top Rated				Basing			
Stocks Ranked by best Composite rating				Stocks trading near pivot			
Symbol	Name	Mkt Val, USD (Mil)	Composite Rating	Symbol	Name	Mkt Val, USD (Mil)	Composite Rating
DOC.AT	Do Co Rest.Cater.	2,487	99	ROADK	Rockwool A	4,478	97
GAW.GB	Games Workshop	6,166	98	FGP.GB	First Group	1,325	91
LIFC.SE	Lifco B	15,581	98	ASSB.SE	Assa Abloy B	35,251	87
BZU.IT	Buzzi	10,748	97	TF1.FR	Tf1 (Tv.Fse.1)	1,904	82
ROA.DK	Rockwool A	4,478	97	VOW3X.DE	Volkswagen Pref. (Xet)	24,162	79
LTG.GB	Learning Techs.Gp.	1,018	97	KRX.IE	Kingspan Group	16,841	74
ZEG.GB	Zegona Communications	5,789	95	ITV.GB	Itv	3,810	73
ROC.DK	Rockwool B	5,452	95	BFIT.NL	Basic-Fit	1,647	72
BETS.SE	Betsson B	1,936	94	PSMX.DE	Prosiebensat 1 (Xet) Media	1,573	66
ADSH.ES	Aedas Homes	1,364	94	MCL.FR	Michelin	26,456	64
R3NKX.DE	Renk Group	3,847	94	MMT.FR	M6-Metropole Tv	1,805	60
SRC.GB	Sigmaroc	1,311	94				
TIFS.GB	Ti Fluid Systems Plc	1,263	94				
RMS.FR	Hermes Intl.	288,685	93				
EVDX.DE	Cts Eventim (Xet)	10,848	93				

European Weekly Summary

Consumer Staples

O'Neil Focus List Constituent O'Neil recommendations				Breaking Out This Week Stocks breaking out from consolidation				Laggard Stocks below 200-DMA + 50-DMA in a downtrend			
Symbol	Name	Mkt Val, USD (Mil)	Focus List Since	Symbol	Name	Mkt Val, USD (Mil)	Composite Rating	Symbol	Name	Mkt Val, USD (Mil)	A/D, Nnbr Rtg, Cur Wk
PFD.GB	Premier Foods	2,037	72					LBAK.BE	Lotus Bakeries	7,329	-27
								DGE.GB	Diageo	62,597	-1
								KWSX.DE	Kws Saat (Xet)	2,041	-15
								TATE.GB	Tate & Lyle	3,037	-36
								RCO.FR	Remy Cointreau	2,767	-21
								GL9.IE	Glanbia	2,820	-8

Top Rated Stocks Ranked by best Composite rating			
Symbol	Name	Mkt Val, USD (Mil)	Composite Rating
IMB.GB	Imperial Brands	29,770	96
CCH.GB	Coca-Cola Hbc (Cdi)	16,234	94
ARYN.CH	Aryzta	2,101	92
GNC.GB	Greencore Group	1,100	92
BATS.GB	British American Tobacco	89,593	90
ABI.BE	Anheuser-Busch Inbev	113,440	88
ORK.NO	Orkla	9,997	85
CWK.GB	Cranswick	3,472	84
LISP.CH	Choc.Lindt & Spruengli Par	13,548	82
BSN.FR	Danone	52,877	82
CAB.DK	Carlsberg B	13,665	80
ITP.FR	Interparfums	3,509	79
LISN.CH	Chocoladefabriken Lindt & Spru	17,668	77
RKT.GB	Reckitt Benckiser Group	47,882	75
MHG.NO	Mowi	9,667	75

Basing Stocks trading near pivot			
Symbol	Name	Mkt Val, USD (Mil)	Composite Rating
ABI.BE	Anheuser-Busch Inbev	113,440	88
CAB.DK	Carlsberg B	13,665	80
HBA.NL	Heineken Holding	21,985	63

European Weekly Summary

Energy

O'Neil Focus List Constituent O'Neil recommendations				Breaking Out This Week Stocks breaking out from consolidation				Laggard Stocks below 200-DMA + 50-DMA in a downtrend			
Symbol	Name	Mkt Val, USD (Mil)	Focus List Since	Symbol	Name	Mkt Val, USD (Mil)	Composite Rating	Symbol	Name	Mkt Val, USD (Mil)	A/D, Nnbr Rtg, Cur Wk
GTT.FR	Gtt	5,650	92					TGS.NO	Tgs	1,804	-4
								SUBC.NO	Subsea 7	4,378	-47
								VARE.NO	Var Energi	7,025	-28
								HBR.GB	Harbour Energy	3,526	-29
								SPM.IT	Saipem	4,400	-42
								ERG.IT	Erg	2,868	-42
								SEMES	Solaria Energia Y Medio Ambiel	1,053	-27
								GES.PT	Galp Energia Sgps B	11,211	-20
								TRIG.GB	The Renewables Infr.Gp.	2,285	-48
								EDPR.PT	Edp Renovaveis	9,272	-3
								NEST.FI	Neste	7,489	-47

Top Rated Stocks Ranked by best Composite rating			
Symbol	Name	Mkt Val, USD (Mil)	Composite Rating
GTT.FR	Gtt	5,650	92
MAU.FR	Maurel Et Prom	1,169	73
VLR.FR	Vallourec	4,280	73
SHEL.GB	Shell (Lon)	199,313	73
TGS.NO	Tgs	1,804	71
NEOP.FR	Neoen	6,605	71

Basing Stocks trading near pivot			
Symbol	Name	Mkt Val, USD (Mil)	Composite Rating
OMV.AT	Omv	15,445	57
PNE3X.DE	Pne Wind (Xet)	1,112	23

Financial

O'Neil Focus List Constituent O'Neil recommendations				Breaking Out This Week Stocks breaking out from consolidation				Laggard Stocks below 200-DMA + 50-DMA in a downtrend			
Symbol	Name	Mkt Val, USD (Mil)	Focus List Since	Symbol	Name	Mkt Val, USD (Mil)	Composite Rating	Symbol	Name	Mkt Val, USD (Mil)	A/D, Nnbr Rtg, Cur Wk
ADYE.NL	Adyen	54,360	99	BMPS.IT	Banca Monte Dei Paschi	9,846	77	AZE.BE	Azelis Group	4,894	-27
TLXX.DE	Talanx Aktgsf. (Xet)	25,599	98					IHP.GB	IntegraFin Holdings Plc	1,396	-21
BWGP.AT	Bawag Group	8,601	98					GRI.GB	Grainger	1,946	-14
III.GB	3i Group	48,513	96					BALB.SE	Fastighets Balder B	7,353	-30
BP.IT	Banco Bpm	16,186	94					CAST.SE	Castellum	5,502	-22
								BFF.IT	Bff Bank	1,678	-15
								ENAV.IT	Enav	2,053	-12
								INVP.GB	Investec	4,215	-18
								SAFE.GB	Safestore Holdings	1,706	-9
								SHC.GB	Shaftesbury Capital	2,928	-23
								BYG.GB	Big Yellow Group	2,326	-19
								DLN.GB	Derwent London	2,588	-32
								GIM.BE	Gimv	1,436	-20
								CBIE.SE	Cibus Nordic Real Estate	1,141	-25
								WKP.GB	Workspace Group	1,052	-15
								XIOR.BE	Xior Student Housing	1,355	-45
								NYFO.SE	Nyfosa	1,816	-22
								GPE.GB	Great Portland Estates	1,412	-27
								BURE.SE	Bure Equity	2,417	-48
								ATRJ.SE	Atrium Ljungberg B	2,152	-34
								CATE.SE	Catena	2,555	-27
								UKW.GB	Greencoat Uk Wind	3,230	-23
								AT1X.DE	Aroundtown (Xet)	3,997	-30
								HMSO.GB	Hammerson	1,629	-15
								GYCX.DE	Grand City Props. (Xet)	1,857	-44
								LEGX.DE	Leg Immobilien (Xet)	5,719	-57

Top Rated Stocks Ranked by best Composite rating				Basing Stocks trading near pivot			
Symbol	Name	Mkt Val, USD (Mil)	Composite Rating	Symbol	Name	Mkt Val, USD (Mil)	Composite Rating
BMED.IT	Banca Mediolanum	11,233	99	HL.GB	Hargreaves Lansdown	6,774	89
SQN.CH	Swissquote 'R'	6,568	99	SGKN.CH	St Galler Kantonalbank	3,280	86
ADYE.NL	Adyen	54,360	99	HBMN.CH	Hbm Healthcare Invs.	1,533	81
A5G.IE	Aib Group	17,634	99	HAT.NL	Hal Trust	12,200	80
BGEO.GB	Lion Finance Group PLC	3,112	99	AMUN.FR	Amundi (Wi)	15,902	77
TBCG.GB	Tbc Bank Group	3,197	99	MNG.GB	M&G	6,628	74
BBVAES	Bbv.Argentaria	82,172	99	BCVN.CH	Bc Vaud N	9,493	71
ALPH.GB	Alpha Group Plc	1,444	99	TRY.DK	Tryg	13,922	45
TCAP.GB	Tp Icap	2,553	99				
BPSO.IT	Banca Ppo.Di Sondrio	5,516	98				
FTKX.DE	Fintech Group (Xet)	2,372	98				
TLXX.DE	Talanx Aktgsf. (Xet)	25,599	98				
MIDI.FR	Axa	93,007	98				
BARC.GB	Barclays	55,535	98				
NWG.GB	Natwest Group	47,413	98				

European Weekly Summary

Healthcare

O'Neil Focus List Constituent			
O'Neil recommendations			
Symbol	Name	Mkt Val, USD (Mil)	Focus List Since
LONN.CH	Lonza Group	46,416	59

Breaking Out This Week			
Stocks breaking out from consolidation			
Symbol	Name	Mkt Val, USD (Mil)	Composite Rating

Laggard			
Stocks below 200-DMA + 50-DMA in a downtrend			
Symbol	Name	Mkt Val, USD (Mil)	A/D, Nmbr Rtg, Cur Wk
ALK.DK	Alk-Abello B	4,213	-16
HLB.DK	H Lundbeck B	4,552	-28
WDH.DK	Demant	8,138	-42
SFZN.CH	Siegfried 'R'	4,735	-29
VITR.SE	Vitrolife	2,269	-27
ELKB.SE	Elektro B	2,114	-16
BANB.CH	Bachem Holding	4,787	-14
COL.DK	Coloplast B	22,612	-25
SOON.CH	Sonova N	18,611	-35
BAV.DK	Bavarian Nordic	1,923	-9
ONT.GB	Oxford Nanopore Tech	1,256	-9
AMP.IT	Amplifon	5,116	-9
ROV.ES	Lbos.Farmaceuticos Rovi	2,986	-30
EVTX.DE	Evotec (Xet)	1,270	-13
TECN.CH	Tecan 'R'	2,739	-28
ZEADK	Zealand Pharma	5,504	-57

Top Rated			
Stocks Ranked by best Composite rating			
Symbol	Name	Mkt Val, USD (Mil)	Composite Rating
CHM.DK	Chemometec	1,402	99
ORP.FR	Emeis	2,140	98
CTEC.GB	Convatec Group	7,026	98
ORNB.FI	Orion B	6,287	97
PHAR.ES	Pharma Mar	1,898	97
PROB.ES	Grifols Ord CI A	4,811	96
UCB.BE	Ucb	39,723	96
BIM.FR	Biomerieux	14,785	96
TERAFI	Terveystalo	1,569	95
MOVE.CH	Medacta Group	3,001	95
AZN.GB	Astrazeneca	241,940	94
CAMX.SE	Camurus	3,564	92
HLN.GB	Haleon	46,739	91
SQ@F.FR	Sanofi	150,015	91
SN.GB	Smith & Nephew	13,036	90

Basing			
Stocks trading near pivot			
Symbol	Name	Mkt Val, USD (Mil)	Composite Rating
CTEC.GB	Convatec Group	7,026	98
PROB.ES	Grifols Ord CI A	4,811	96
UCB.BE	Ucb	39,723	96
SN.GB	Smith & Nephew	13,036	90
GRFP.ES	Grifols Class 'B' Pref.	2,191	89
NOVN.CH	Novartis 'R'	251,202	76

European Weekly Summary

Retail

O'Neil Focus List Constituent O'Neil recommendations				Breaking Out This Week Stocks breaking out from consolidation				Laggard Stocks below 200-DMA + 50-DMA in a downtrend			
Symbol	Name	Mkt Val, USD (Mil)	Focus List Since	Symbol	Name	Mkt Val, USD (Mil)	Composite Rating	Symbol	Name	Mkt Val, USD (Mil)	A/D, Nbr Rtg, Cur Wk
Top Rated Stocks Ranked by best Composite rating				Basing Stocks trading near pivot							
Symbol	Name	Mkt Val, USD (Mil)	Composite Rating	Symbol	Name	Mkt Val, USD (Mil)	Composite Rating				
CLAS.SE	Cias Ohlson B	1,387	98	MKS.GB	Marks & Spencer Group	9,753	96	SSPG.GB	Ssp Group	1,657	-16
MKS.GB	Marks & Spencer Group	9,753	96	FIEX.DE	Fielmann (Xet)	4,195	84	FDR.ES	Fluidra	4,704	-20
EI.FR	Essilorluxottica	134,823	95	HBHX.DE	Hornbach Holding	1,465	57	ROO.GB	Deliveroo plc	2,472	-1
ELPB.SE	Electrolux Professional B	2,005	95	KESK.FI	Kesko B	5,577	52	DOM.GB	Domino's Pizza Group	1,462	-18
EPR.NO	Europris	1,216	94					GRG.GB	Greggs	2,467	-53
TSCO.GB	Tesco	33,096	93					HMBF.SE	Hennes & Mauritz B	20,316	-17
SON.PT	Sonae Sgps	2,193	92					SMWH.GB	Wh Smith	1,803	-20
CPG.GB	Compass Group	57,108	92					DNLM.GB	Dunelm Group	2,509	-12
ZALX.DE	Zalando (Xet)	9,400	88					SBRY.GB	Sainsbury (J)	7,698	-7
AVOL.CH	Avolta Ag	6,661	87					RDCX.DE	Redcare Pharmacy	2,678	-5
NXT.GB	Next	15,816	85					CRFR.FR	Carrefour	9,571	-10
BC.IT	Brunello Cucinelli	8,207	84					DIE.BE	D Ieteren Group	9,293	-21
FIEX.DE	Fielmann (Xet)	4,195	84					FERG.GB	Ferguson Enterprises	32,898	-38
YOUX.DE	About Your Holding	1,343	79					OCDO.GB	Ocado Group	2,711	-17
RUST.SE	Rusta	1,181	77					DOUX.DE	Douglas	1,808	-13
								BME.GB	B&M European Val.Ret. (Di)	3,489	-23
								TPK.GB	Travis Perkins	1,740	-34
								JD.GB	Jd Sports Fashion	5,213	-52

Technology

O'Neil Focus List Constituent O'Neil recommendations				Breaking Out This Week Stocks breaking out from consolidation				Laggard Stocks below 200-DMA + 50-DMA in a downtrend			
Symbol	Name	Mkt Val, USD (Mil)	Focus List Since	Symbol	Name	Mkt Val, USD (Mil)	Composite Rating	Symbol	Name	Mkt Val, USD (Mil)	A/D, Nmbr Rtg, Cur Wk
NEMX.DE	Nemetschek (Xet)	14,128	87	IDR.ES	Indra Sistemas	4,773	99	FORT.SE	Fortnox Ab	3,952	-14
								GAMA.GB	Gamma Communications	1,644	-11
								ACQB.SE	Yubico	1,903	-12
								OXIG.GB	Oxford Instruments	1,433	-12
								BYIT.GB	Bytes Technology Group	1,301	-47
								SOP.FR	Sopra Steria Group	3,793	-5
								NGP.DK	Netcompany Group	2,141	-1
								ASIN.NL	Asm International	24,093	-28
								ASML.NL	Asml Holding	284,173	-20
								KNOS.GB	Kainos Group	1,171	-37
								BIC.FR	Bic	2,697	-17
								RS1.GB	Rs Group Plc	3,866	-11
								LIGH.NL	Signify	2,903	-15
								BESI.NL	Be Semiconductor Industries	8,893	-20

Top Rated Stocks Ranked by best Composite rating			
Symbol	Name	Mkt Val, USD (Mil)	Composite Rating
IDR.ES	Indra Sistemas	4,773	99
EXOP.FR	Exosens	1,797	99
TRB.SE	Truecaller B	2,185	99
BCG.GB	Baltic Classifieds Grp	1,963	99
TRST.GB	Trustpilot Group	1,513	98
VITB.SE	Vitec Software Group B	2,113	98
G24X.DE	Scout24 (Xet)	7,996	98
PROS.NL	Prosus N	119,311	98
DSY.FR	Dassault Systemes	57,134	97
SGE.GB	Sage Group	15,806	97
UNMG.NL	Universal Music Group	54,720	97
HEMN.SE	Hemnet Group	3,252	96
AG1X.DE	Auto1 Grp (Xet)	5,268	96
OEAC.SE	Oem International B	1,561	95
NOS.PT	Nos Sgps	2,528	94

Basing Stocks trading near pivot			
Symbol	Name	Mkt Val, USD (Mil)	Composite Rating
BT,A.GB	Bt Group	20,623	88
VOD.GB	Vodafone Group	23,455	74
ELIS.FI	Elisa	8,271	62
KPN.NL	Kpn Kon	15,606	61

European Weekly Summary

Transportation

O'Neil Focus List Constituent O'Neil recommendations				Breaking Out This Week Stocks breaking out from consolidation				Laggard Stocks below 200-DMA + 50-DMA in a downtrend			
Symbol	Name	Mkt Val, USD (Mil)	Focus List Since	Symbol	Name	Mkt Val, USD (Mil)	Composite Rating	Symbol	Name	Mkt Val, USD (Mil)	A/D, Nnbr Rtg, Cur Wk
INPW.NL	Inpost	8,808	70	DHLX.DE	Deutsche Post (Xet)	55,970	70	LOGI.ES	Logista Hold	3,978	-20
DSV.DK	Dsv	49,751	60					CADE.NO	Cadeler	1,664	-7
								SNI.NO	Stolt-Nielsen	1,339	-37
								SVG.DK	Svitzer Group	1,045	-6
								HOAH.NO	Hoegh Autoliners	1,325	-71
								SHUR.BE	Shurgard Self Storage	3,415	-27

Top Rated Stocks Ranked by best Composite rating			
Symbol	Name	Mkt Val, USD (Mil)	Composite Rating
PST.IT	Poste Italiane	22,853	98
CTT.PT	Ctt Correios De Portugal	1,050	97
CKN.GB	Clarkson	1,754	97
DSB.DK	A P Moller Maersk B	11,135	95
DSA.DK	A P Moller Maersk A	17,529	92
IDS.GB	International Distribution	4,499	92
ALD.FR	Ayvens	7,209	91
CAF.ES	Const Y Auxiliar De Ferr	1,441	88
IAG.GB	Intl.Cons.Airl.Gp.(Cdi)	19,763	87
LHAX.DE	Deutsche Lufthansa (Xet)	10,371	87
IDL.FR	Id Logistics Group	2,763	85
OES.AT	Osterreichische Post	2,390	85
UTA.FR	Air France-Klm	3,291	81
WIZZ.GB	Wizz Air Holdings	2,280	72

Basing Stocks trading near pivot			
Symbol	Name	Mkt Val, USD (Mil)	Composite Rating

European Weekly Summary

Utility

O'Neil Focus List Constituent O'Neil recommendations				Breaking Out This Week Stocks breaking out from consolidation				Laggard Stocks below 200-DMA + 50-DMA in a downtrend			
Symbol	Name	Mkt Val, USD (Mil)	Focus List Since	Symbol	Name	Mkt Val, USD (Mil)	Composite Rating	Symbol	Name	Mkt Val, USD (Mil)	A/D, Nmbr Rtg, Cur Wk
								ACE.IT	Acea	3,890	-2
								SVT.GB	Severn Trent	9,285	-25
								DRX.GB	Drax Group	2,724	-46
								SSE.GB	Sse	21,026	-18

Top Rated Stocks Ranked by best Composite rating			
Symbol	Name	Mkt Val, USD (Mil)	Composite Rating
REN.PT	Ren Redes Energeticas Nacior	1,908	87
VIE.FR	Veolia Environ	24,691	87
CNA.GB	Centrica	9,537	81
BKW.CH	Bkw	9,494	77
ELE.ES	Endesa	24,547	76
A2A.IT	A2a	7,366	76
TEP.GB	Telecom Plus	1,752	75
IRE.IT	Iren	2,946	75
IG.IT	Italgas	5,352	74
TRN.IT	Terna Rete Elettrica Naz	16,912	73
HER.IT	Hera	5,939	72

Basing Stocks trading near pivot			
Symbol	Name	Mkt Val, USD (Mil)	Composite Rating
VIE.FR	Veolia Environ	24,691	87
BKW.CH	Bkw	9,494	77
EOANX.DE	E On (Xet)	36,858	53

Disclaimer

U.S. FOCUS LIST & GLOBAL FOCUS LISTS DEVELOPED, EMERGING & FRONTIER MARKETS

The U.S. Focus List and Global Focus List for Developed, Emerging, and Frontier Markets seek to identify equity ideas for further research for institutional investors. Investors, before making investment decisions, should review and evaluate additional information, such as a company's SEC filings, business model, industry fundamentals, management team, and products and services.

EXPLANATION OF PERFORMANCE CHARTS FOR U.S. FOCUS LIST & GLOBAL FOCUS LISTS

William O'Neil + Co. Incorporated is an SEC Registered Investment Adviser. Employees of William O'Neil + Company and its affiliates may now or in the future have positions in securities mentioned in this communication. Our content should not be relied upon as the sole factor in determining whether to buy, sell, or hold a stock. For important information about reports, our business, and legal notices (including our Privacy Policy), please go to williamoneil.com/legal.

Performance results do not represent actual trading, and may not reflect the impact that material economic and market factors might have had on the investment decision-making process if actually managing client money. There is substantial speculative risk in most international stocks. Past performance is not necessarily an indication of future performance. Performance computations for the U.S. Focus List and Global Focus Lists reflect a time weighted rate of return. All holdings are rebalanced to equal dollar amounts daily. Dividends are not considered in computations. Commissions used in calculations are 50 basis points for stocks in the Global Focus List Emerging Markets and 20 basis points for stocks in the Global Focus List Developed Markets. Percent gains and losses are calculated for all issues that remain on the "Buy Recommendations" at the end of the week. For issues that were added to the "Buy Recommendations" intra-week, the basis used to calculate the percent change is the price noted when the issue appeared as a "Buy Recommendation" in both the U.S. Focus List or Global Focus List Confidential Alerts. For issues that were "Removed" intra-week, the selling price used to calculate the percent change is the price noted when the issue appeared as "Removed" in the U.S. Focus List or the Global Focus List Confidential Alerts. The iShares MSCI EAFE Index Fund seeks to provide investment results that correspond generally to the price and yield performance, before fees and expenses, of publicly traded securities in the European, Australasian and Far Eastern markets, as measured by the MSCI EAFE Index.

The iShares MSCI Emerging Markets Index Fund seeks to provide investment results that correspond generally to the price and yield performance, before fees and expenses, of publicly traded securities in emerging markets, as represented by the MSCI Emerging Markets Index.

The benchmark is the S&P 500 Index, which is a market-capitalization weighted index containing the 500 most widely held companies (400 industrial, 20 transportation, 40 utility and 40 financial companies) chosen with respect to market size, liquidity, and industry. The volatility of the S&P 500 Index may be materially different from that of the strategy depicted, and the holdings in the strategy may differ significantly from the securities that comprise the S&P 500 Index. The S&P 500 Index is calculated on a total return basis with dividends reinvested and is not assessed a management fee.

European Weekly Summary

WILLIAM O'NEIL+CO.

All charts in this presentation are intended to be used as a tool to assist investors in identifying equity ideas worthy of further review. Charts provide certain current and historical information, but are not a substitute for a comprehensive analysis of individual stocks, and should not be relied on as the sole factor in determining whether to buy, sell or hold. Nothing in this communication should be construed as an offer to buy or sell any security.

Disclosures

William O'Neil + Co. Incorporated is an SEC Registered Investment Adviser. Employees of William O'Neil + Co. and its affiliates may now or in the future have positions in securities mentioned in this communication. Our content and stock charts, which provide certain current and historical information, should not be relied upon as the sole factor in determining whether to buy, sell, or hold a stock. The charts provide certain current and historical information, but are not a substitute for a comprehensive analysis of the individual stocks. For important information about reports, our business, and legal notices (including our Privacy Policy), please go to williamoneil.com/legal

© 2025, William O'Neil + Company, Inc. All Rights Reserved.

No part of this material may be copied or duplicated in any form by any means or redistributed without the prior written consent of William O'Neil + Co.