

4536720044 pandoragroup.com Copenhagen, DENMARK Inc 2005 MGMT owns -- % from Pivot in 14 Weeks

Pandora A S engages in the design, manufacture, and sale of hand finished and modern jewelry. It operates through the Moments and Collabs; and Style and Upstream Innovation segments. The company was founded by Per Enevoldsen and Winnie Enevoldsen in 1982 and is headquartered in Glostrup, Denmark. [LESS](#)

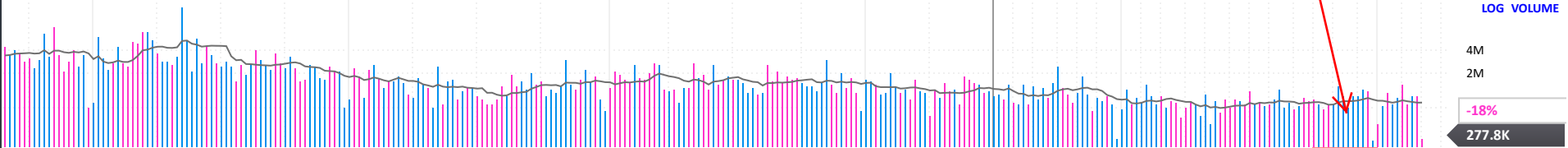
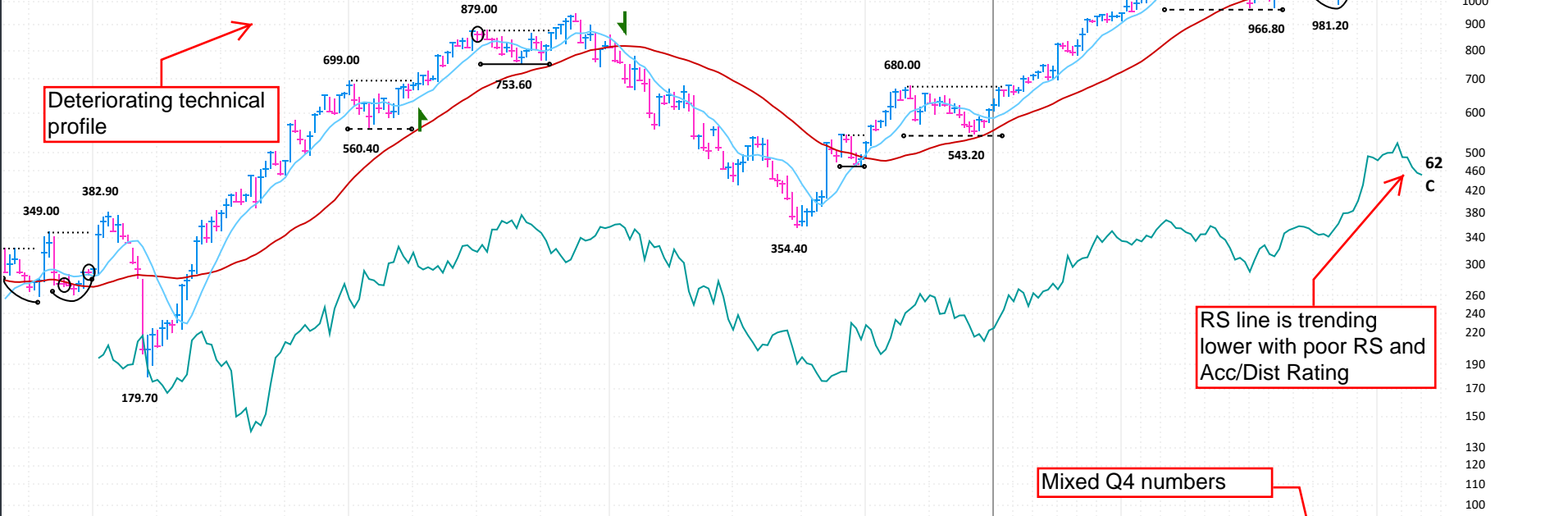
ANNUAL - DEC END	2016	2017	2018	2019	2020	2021	2022	2023	2024	2025 Estimate	2026 Estimate
EPS DKK	52.80	51.98	47.17	30.28	19.97	42.12	54.22	55.50	64.85	73.40	13%
CASH FLOW/SHR DKK	56.92	59.31	61.77	69.17	61.33	62.48	47.32	85.78	107.78		
PRETAX MARGIN %	38%	34%	29%	18%	13%	23%	25%	22%	22%	23%	10%
RETURN ON EQUITY %	93%	87%	78%	51%	31%	58%	71%	76%	96%	2020-24 28%	(22 Stability) 10%
SALES % CHANGE	21%	12%	0%	-4%	-13%	23%	13%	6%	13%	COMP RATING 86	SMR RATING A
SALES (MIL DKK)	20K	23K	23K	22K	19K	23K	26K	28K	32K	INVT/O 1.7x 48	
WEEKLY	10 Jan	17 Jan	24 Jan	31 Jan	7 Feb	14 Feb	21 Feb	28 Feb	4 Mar	2022-24	2022-24
DATAGRAPH RATING	61	61	63	62	61	58	57	54	52	TAX RATE 2022-24	44%
AVG DAILY VOL (000)	195	202	190	188	202	197	197	193	189	BACKLOG 2022-24	182%
UP/DOWN VOLUME	1.7	1.6	1.9	1.8	1.4	1.2	1.0	0.9	0.9	R & D	211%
ACCUM/DIST RATING	24	4	18	17	-8	-16	-10	-4	-3	DIV DKK 20.00 (1.7%)	23%
RELATIVE STRENGTH	90	89	91	91	85	77	74	69	62	BK VAL 17.38x '24	24%
GROUP RANK	3	3	3	2	3	7	11	14	19	DIV GR RT+7% (4)	25%
										BETA 0.29(8.00)	
										2024 EMPLOYEES 41,326 (50%)	
										ALPHA 0.07 (0.04)	

The stock breached its key 100-DMA support and looks to lag the broader market

Deteriorating technical profile

RS line is trending lower with poor RS and Acc/Dist Rating

Mixed Q4 numbers



FINANCIALS	20	Jun, 20	Sep, 20	Dec, 20	Mar, 21	Jun, 21	Sep, 21	Dec, 21	Mar, 22	Jun, 22	Sep, 22	Dec, 22	Mar, 23	Jun, 23	Sep, 23	Dec, 23	Mar, 24	Jun, 24	Sep, 24	Dec, 24	Mar, 25	P/E
EPS (DKK)	26	-1.76	3.44	18.00	6.30	10.00	6.37	19.89	10.50	10.24	7.80	26.47	9.94	9.39	6.55	30.77	11.74	10.62	7.91	35.60	12.92e	18
EPS % CHANGE	8%	-133%	+367%	-4%	+3%	+668%	+85%	+11%	+67%	+2%	+22%	+33%	-5%	-8%	-16%	+16%	+18%	+13%	+21%	+16%	+10%	2025 Est.: 16.5
SALES (MIL DKK)	2.0	2,876.0	4,070.0	7,891.0	4,500.0	5,155.0	4,728.0	9,011.0	5,689.0	5,655.0	5,263.0	9,856.0	5,850.0	5,894.0	5,572.0	10,820.0	6,834.0	6,771.0	6,103.0	11,973.0	7,480.0e	2026 Est.: 16.5
SALES % CHANGE	8%	-39%	-8%	-1%	+8%	+79%	+16%	+14%	+26%	+10%	+11%	+9%	+3%	+4%	+6%	+10%	+17%	+15%	+10%	+11%	+9%	5-yr High: 36
EPS % SURPRISE	7%	+37.3%	-23.7%	-2.9%	+7.0%	+10.3%	-13.3%	-11.2%	+25.3%	-5.2%	+2.2%	+5.7%	-4.6%	-10.2%	+3.9%	-5.6%	+15.6%	-1.6%	+5.9%	-0.2%		5-yr Low: 6
FUNDS	80	1,074	1,214	1,214	1,238	1,300	1,263	1,299	1,325	1,317	1,222	1,232	1,252	1,327	1,357	1,480	1,591	1,667	1,672	1,666		vs Ind. Avg: 1.1x
SHARES HELD BY FUNDS	M	31M	32M	33M	34M	36M	36M	37M	36M	34M	33M	34M	34M	33M	33M	32M	31M	31M	31M	32M		