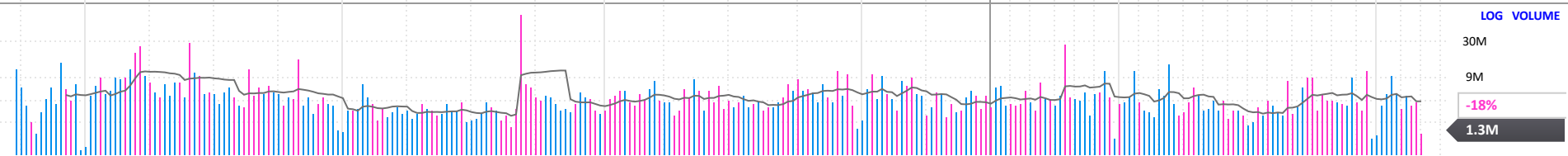
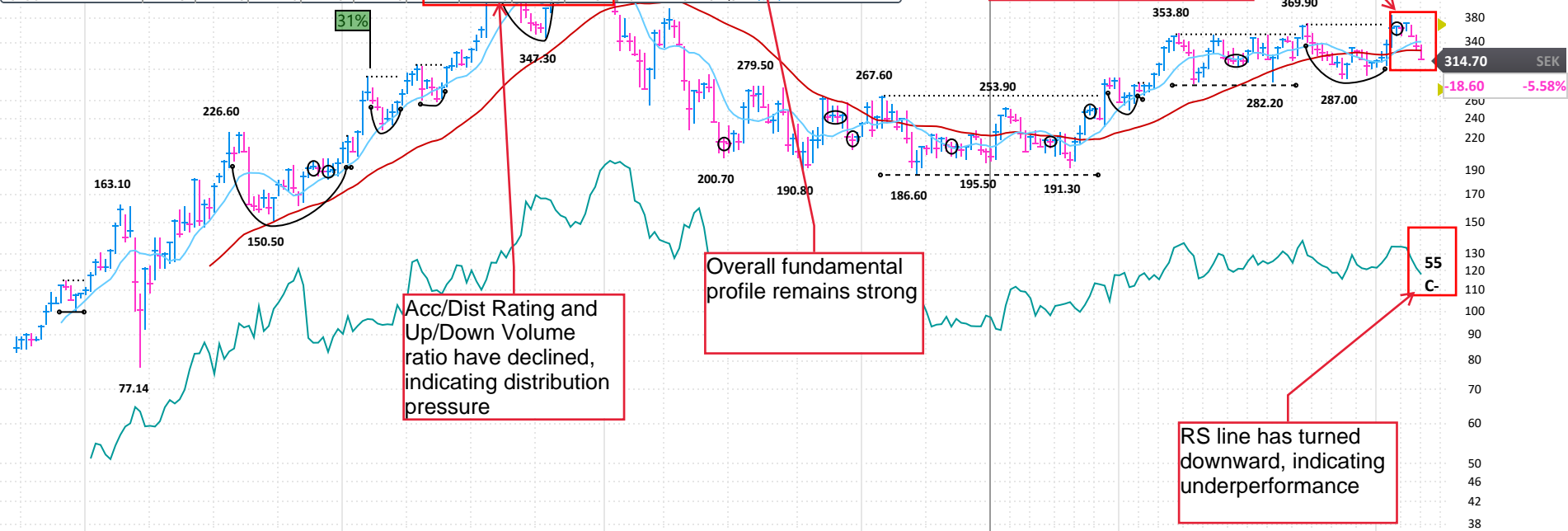


46850655300 eqtgroup.com Stockholm, SWEDEN Inc 1994 MGMT owns --

EQT AB engages in the provision of investment advisory services. The firm operates through the following segments: Private Capital and Real Assets. The Private Capital segment comprises four business lines such as private equity, mid market Asia, ventures and public value. The Real Assets segment comprises two business lines such as infrastructure and real estate. The company was founded by Yngve Conni Jonsson in 1994 and is headquartered in Stockholm, Sweden. [LESS](#)

ANNUAL - DEC END	2016	2017	2018	2019	2020	2021	2022	2023	2024	2025 Estimate	2026 Estimate
EPS SEK	0.01	0.77	1.30	1.99	3.12	9.42	1.82	8.91	7.50	13.89	85%
CASH FLOW/SHR SEK							5.64	8.91	4.47	Earnings Growth Rate	
PRETAX MARGIN %	6%	27%	33%	29%	45%	58%	18%	12%	34%	Sales Growth Rate	
RETURN ON EQUITY %		178%	55%	22%	25%	43%	4%	2%	11%	2022-24	28%
SALES % CHANGE		36%	28%	45%	24%	113%	3%	49%	28%	2020-24	41%
SALES (MIL SEK)	2,303	3,140	4,022	5,850	7,268	15K	16K	24K	30K	COMP RATING	91
WEEKLY	10 Jan	17 Jan	24 Jan	31 Jan	7 Feb	14 Feb	21 Feb	28 Feb	4 Mar	INVT 1/0	--
DATAGRAPH RATING	52	63	72	71	68	74	72	64	64	DEBT %	2022-24
AVG DAILY VOL (000)	980	994	1,116	1,144	1,147	1,150	1,040	1,059	1,064	TAX RATE	2022-24
UP/DOWN VOLUME	1.5	1.7	1.7	1.8	1.7	1.6	1.3	1.3	1.3	BACKLOG	2022-24
ACCUM/DIST RATING	3	13	18	7	8	8	0	1	-6	R & D	--
RELATIVE STRENGTH	53	70	80	82	75	75	63	57	55	DIV SEK	3.60 (1.1%)
GROUP RANK	57	43	40	32	43	47	49	56	57	BETA	1.50(34.00)
										2024 EMPLOYEES	1,941 (3%)
										ALPHA	-0.01 (0.00)



FINANCIALS	20	Jun, 20	Sep, 20	Dec, 20	Mar, 21	Jun, 21	Sep, 21	Dec, 21	Mar, 22	Jun, 22	Sep, 22	Dec, 22	Mar, 23	Jun, 23	Sep, 23	Dec, 23	Mar, 24	Jun, 24	Sep, 24	Dec, 24	Mar, 25	P/E
EPS (SEK)		0.53		2.37		3.77		5.64		2.47		-0.58		0.11		1.16		2.71		4.80		44
EPS % CHANGE						+611%		+138%		-34%		-110%		-96%		+300%		+2,364%		+314%		2025 Est.: 22.8
EPS % SURPRISE		-24.1%		+67.7%		+2.5%		+11.9%		-32.8%		-19.5%		-8.0%		-3.5%		-10.4%		+4.8%		2026 Est.: 25
SALES (MIL SEK)		2,814.7		4,590.8		6,838.9		8,618.5		7,608.9		8,255.5		11,211.1		12,523.5		14,030.4		16,305.2		5-yr High: 648
SALES % CHANGE						+143%		+88%		+11%		-4%		+47%		+52%		+25%		+30%		5-yr Low: 25
MARGIN AFTER TAX		+17.8%		+74.6%		+53.5%		+64.6%		+32.2%		-7.6%		+1.1%		+11.0%		+22.9%		+34.8%		vs Ind. Avg: 2.5x
FUNDS	45	496	551	625	679	771	891	963	945	941	931	935	927	894	901	933	966	973	977	998		