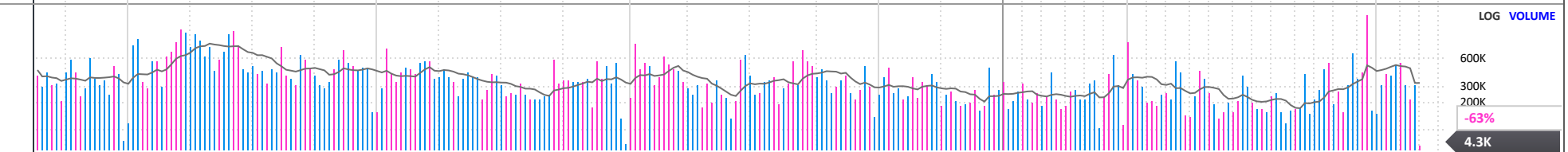
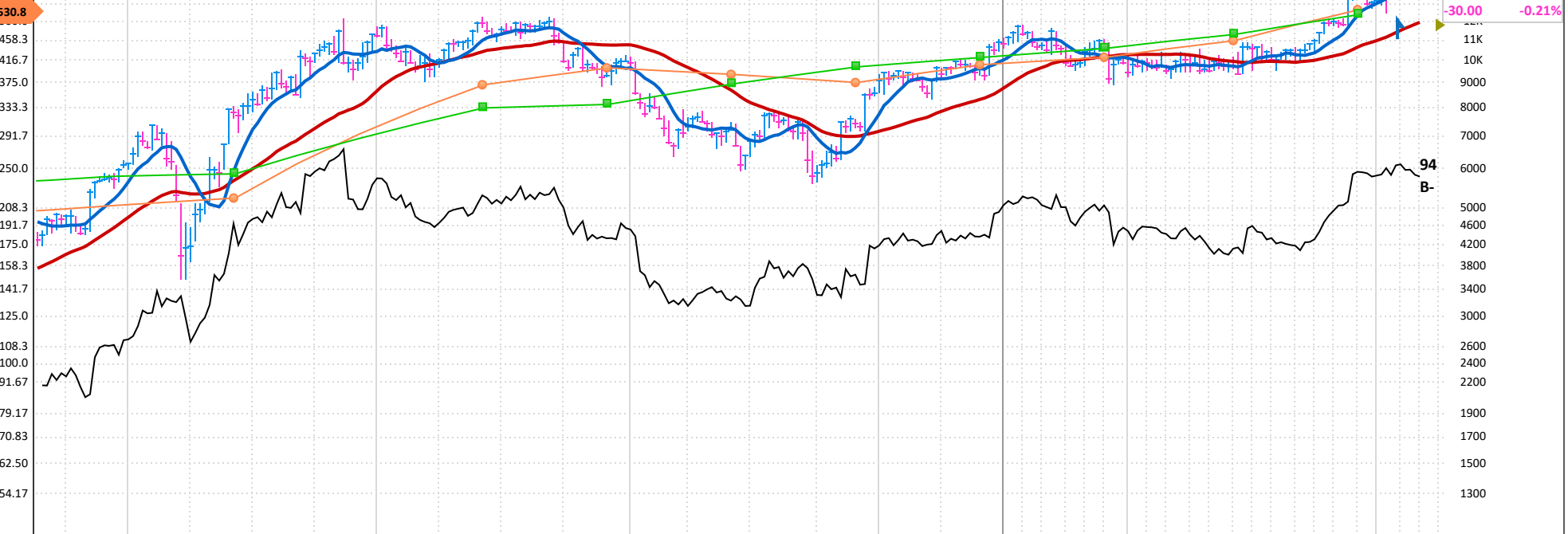


EPS 24x games-workshop.co.uk Lenton, UNITED KINGDOM Inc 1991 MGMT owns -- OH -4% LOG (Fixed) PRICE

Games Workshop Group Plc engages in the business of designing and manufacturing miniature figures and games. The firm also distributes products to retail stores, independent retailers, and online through global web stores. It operates under the Core and Licensing segments. The Core segment includes design, manufacture, and sales of fantasy miniatures. The Licensing segment focuses on the development of digital content for animation and TV. The company was founded in 1975 and is headquartered in Lenton, the United Kingdom. [LESS](#)

ANNUAL - MAY END	2016	2017	2018	2019	2020	2021	2022	2023	2024	2025 Estimate	2026 Estimate	
EPS GBX	42.10	95.10	184.31	202.91	218.70	372.71	391.31	409.66	458.78	503.47	10%	
CASH FLOW/SHR GBX	75.62	136.03	214.06	221.37	319.53	403.62	370.21	589.40	602.54	Earnings Growth Rate		
PRETAX MARGIN %	14%	24%	34%	32%	33%	41%	38%	36%	39%	2022-24	9% (5 Stability)	
RETURN ON EQUITY %	26%	53%	79%	69%	59%	74%	60%	57%	62%	2020-24	17% (12 Stability)	
SALES % CHANGE	-1%	34%	40%	16%	5%	37%	12%	14%	12%	COMP RATING	96	
SALES (MIL) GBX	12K	16K	22K	26K	27K	37K	41K	47K	53K	INV T/O	4.1x 73	
DEBT %	2022-24		17%		17%		15%		SMR RATING			A
TAX RATE	2022-24		18%		21%		26%		BK VAL			18.74x '24
BACKLOG	2022-24		--		--		--		DIV GBX			525.00 (3.7%)
R & D	2022-24		--		--		--		BETA			1.18(17.00)
ALPHA	0.11 (0.06)											
2024 EMPLOYEES	2,950 (9%)											



FINANCIALS	May 20	Aug 20	Nov 20	Feb 21	May 21	Aug 21	Nov 21	Feb 22	May 22	Aug 22	Nov 22	Feb 23	May 23	Aug 23	Nov 23	Feb 24	May 24	Aug 24	Nov 24	Feb 25	P/E	27
EPS (GBX)	218.70				372.71		217.17		174.18		202.44		207.22		216.90		241.89		288.88		2025 Est.:	28.3
EPS % CHANGE					+70%						-7%		+19%		+7%		+17%		+33%		2026 Est.:	
SALES (MIL GBX)	26,970.0				36,950.0		19,150.0		22,330.0		22,660.0		24,420.0		24,770.0		27,800.0		29,950.0		5-yr High:	41
SALES % CHANGE					+37%						+18%		+9%		+9%		+14%		+21%		5-yr Low:	15
EPS % SURPRISE																					vs Ind. Avg.:	0.2x
FUNDS	359	403	441	483	448	437	417	422	423	414	434	462	483	513	535	513	530	521	549			
SHARES HELD BY FUNDS	16M	16M	16M	17M	17M	17M	17M	17M	18M	17M	18M	18M	18M	17M	18M	18M	18M	18M	18M			