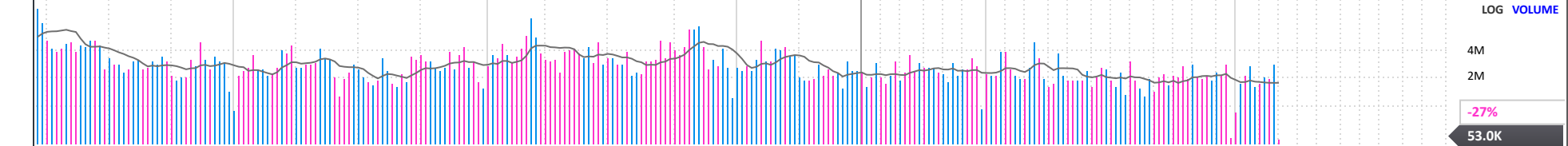
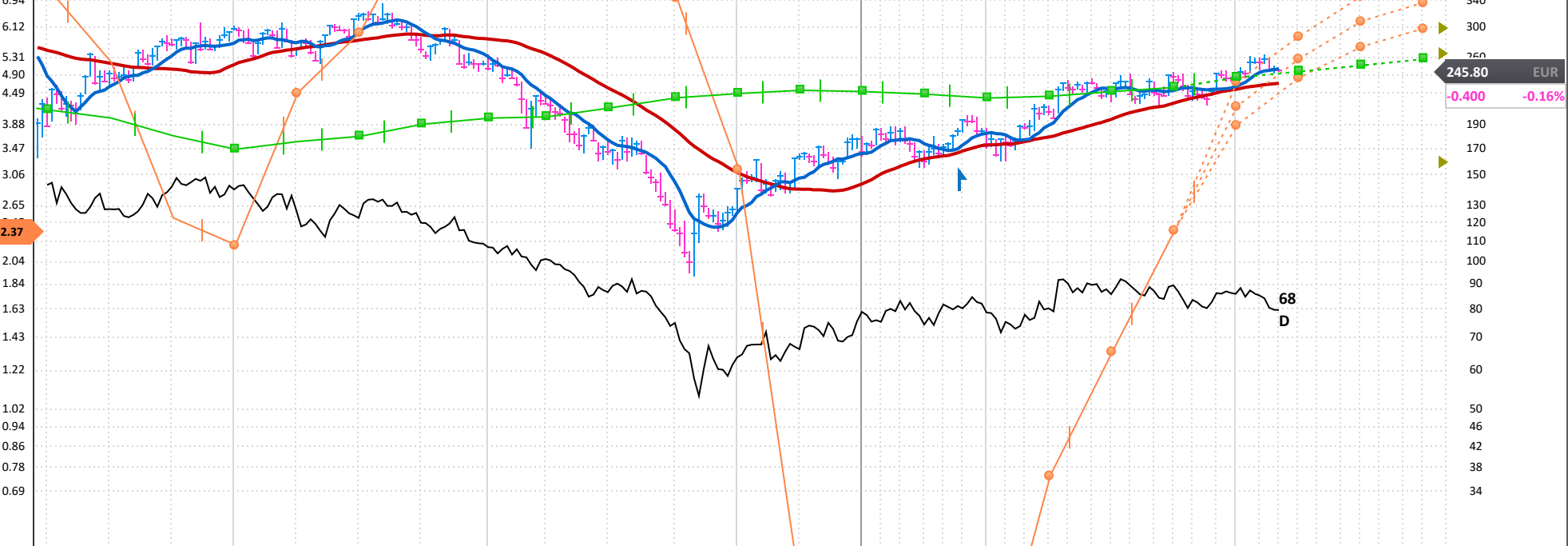


499132840 EPS Rank 73	adidas-group.com		Herzogenaurach, GERMANY Inc 1924		MGMT owns --		OH -7%		LOG (Fixed)	PRICE				
adidas AG engages in the design, distribution, and marketing of athletic and sporting lifestyle products. It operates through the following geographical segments: EMEA, North America, Greater China, Asia Pacific, Latin America, and Other Businesses. The Other Businesses segment includes the activities of the Y 3 label and other subordinated businesses. The company was founded by Adolf Dassler in 1920 and is headquartered in Herzogenaurach, Germany. <a href="#">LESS</a>														
<b>ANNUAL - DEC END</b>														
EPS EUR	2015	2016	2017	2018	2019	2020	2021	2022	2023	2024 Estimate	2025 Estimate			
	3.30	5.09	6.68	8.44	10.00	2.21	10.90	3.34	-0.42	4.19	1098%	7.87	88%	
CASH FLOW/SHR EUR	5.51	6.64	8.19	13.21	13.73	6.97	15.93	-3.60	14.03	<b>Earnings Growth Rate</b>		<b>Sales Growth Rate</b>		
PRETAX MARGIN %	6%	8%	10%	11%	11%	3%	9%	2%	0%	2022-24 --		1%		
RETURN ON EQUITY %	12%	18%	22%	27%	29%	7%	21%	4%	-3%	2020-24 --		1%		
SALES % CHANGE	16%	9%	15%	3%	8%	-22%	15%	6%	-5%	<b>COMP RATING</b> 58		<b>SMR RATING</b> D		
SALES (MIL) EUR	17K	18K	21K	22K	24K	18K	21K	23K	21K	<b>INV T/O</b> 2.3x 46				
<b>WEEKLY</b>														
DATAGRAPH RATING	Jan 3	Jan 10	Jan 17	Jan 24	Jan 31	Feb 7	Feb 14	Feb 21	Feb 28	DEBT %	2021-23	63%	106%	98%
AVG DAILY VOL (000)	73	77	75	76	77	68	73	72	71	TAX RATE	2021-23	19%	35%	189%
UP/DOWN VOLUME	405	395	394	401	400	391	395	388	403	BACKLOG	2021-23	--		
ACCUM/DIST RATING	1.3	1.6	1.5	1.8	2.0	1.9	1.8	1.2	1.2	R & D	0.70%	BK VAL 9.60x '23		
RELATIVE STRENGTH	7	16	14	19	10	6	6	-20	-19	DIV EUR	0.70 (0.3%)	DIV GR RT -4.7% (52)		
GROUP RANK	63	77	67	72	74	77	80	75	68	BETA	1.11(27.00)	ALPHA 0.02 (0.01)		
	94	50	67	50	66	103	121	113	137	2023 EMPLOYEES 59,030 (0%)				



FINANCIALS	Dec 20	Mar 21	Jun 21	Sep 21	Dec 21	Mar 22	Jun 22	Sep 22	Dec 22	Mar 23	Jun 23	Sep 23	Dec 23	Mar 24	Jun 24	Sep 24	Dec 24	Mar 25	Jun 25	Sep 25	P/E
EPS (EUR)	2.21	2.86	2.04	4.92	1.05	2.52	1.61	1.90	-2.87	-0.22	0.47	1.45	-2.12	0.95	1.06	2.48	-0.25e	2.01e	2.08e	3.06e	104
EPS % CHANGE						-12%	-21%	-61%	-373%	-109%	-71%	-24%	+26%	+532%	+126%	+71%	+88%e	+112%e	+96%e	+23%e	2025 Est.: 31.2
SALES (MIL EUR)	18,435.0	5,268.0	5,077.0	5,752.0	5,137.0	5,302.0	5,596.0	6,408.0	5,205.0	5,274.0	5,343.0	5,999.0	4,811.0	5,458.0	5,822.0	6,438.0	5,871.8e	6,132.0e	6,531.3e	7,201.0e	2026 Est.: 382
SALES % CHANGE						+1%	+10%	+11%	+1%	-1%	-5%	-6%	-8%	+3%	+9%	+7%	+22%e	+12%e	+12%e	+12%e	5-yr High: 16
EPS % SURPRISE	+2.7%	+32.9%	+22.4%	-4.9%	+98.0%	+11.3%	+6.3%	-87.6%	+3.2%	-63.8%	-301.7%	+55.4%	+29.1%	-13.9%	+11.2%	+33.9%					vs Ind. Avg: 10.2x
FUNDS	2,472	2,559	2,577	2,654	2,617	2,627	2,639	2,402	2,231	2,150	2,102	2,192	2,225	2,165	2,304	2,350	2,399				
SHARES HELD BY FUNDS	77M	80M	80M	81M	79M	76M	75M	72M	72M	81M	81M	78M	77M	77M	78M	78M	78M				