

46317218000 vitrolife.com Gothenburg, SWEDEN Inc 1989 MGMT owns --

Vitrolife AB engages in the development, manufacture, and sale of products and systems for the preparation, cultivation, and storage of human cells, tissue, and organs. [MORE](#)

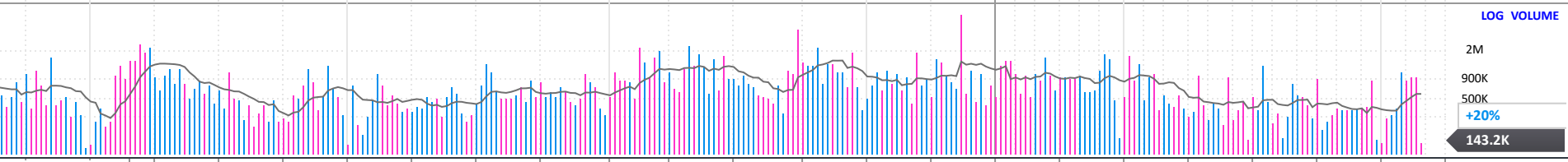
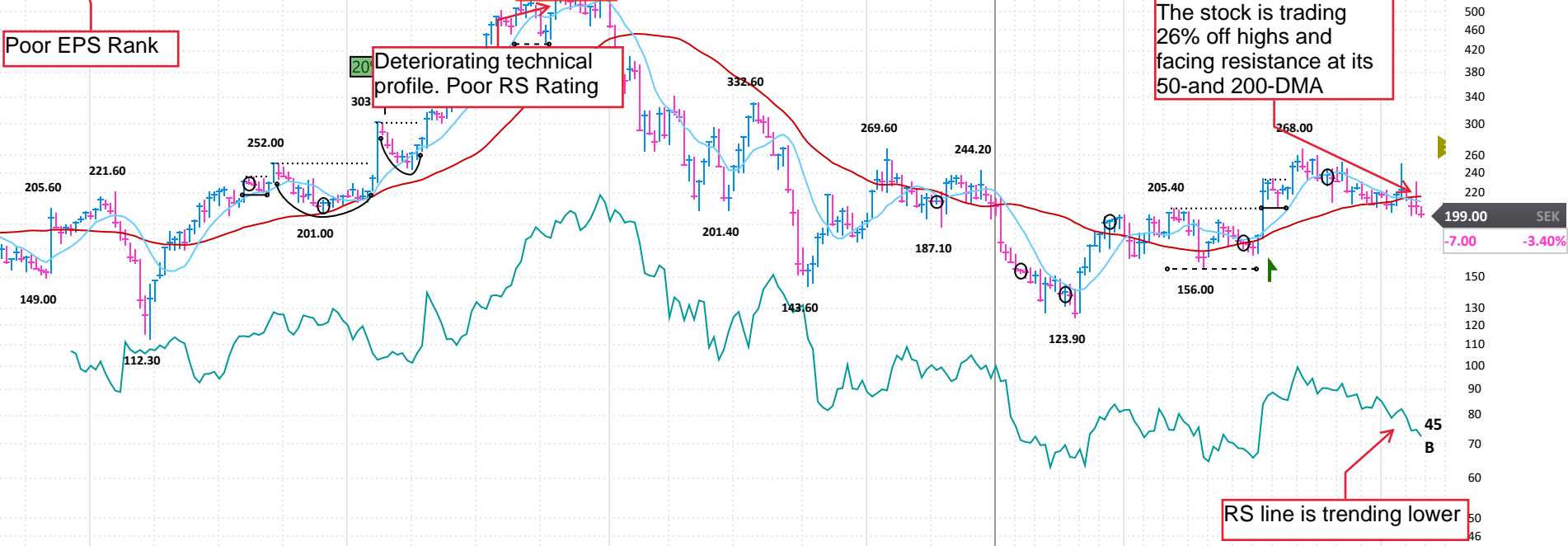
ANNUAL - DEC END	2016	2017	2018	2019	2020	2021	2022	2023	2024	2025 Estimate	2026 Estimate
EPS SEK	1.75	2.43	2.85	3.53	2.64	2.97	2.91	-28.44	3.79	5.43	43%
CASH FLOW/SHR SEK	1.67	2.88	3.22	3.81	3.28	3.35	4.70	5.59	6.69	Earnings Growth Rate	
PRETAX MARGIN %	29%	33%	35%	33%	29%	27%	17%	-106%	19%	Sales Growth Rate	
RETURN ON EQUITY %	21%	24%	23%	23%	15%	4%	3%	-26%	4%	2020-24 --	
SALES % CHANGE	19%	22%	10%	29%	-16%	35%	92%	9%	3%	COMP RATING 58	
SALES (ML) SEK	856	1,046	1,151	1,480	1,246	1,681	3,234	3,512	3,609	SMR RATING B	
WEEKLY	Jan 3	Jan 10	Jan 17	Jan 24	Jan 31	Feb 7	Feb 14	Feb 21	Feb 24	INV T/O 4.2x 62	
DATAGRAPH RATING	50	46	45	52	65	55	54	56	55	DEBT % 2022-24	
AVG DAILY VOL (000)	83	84	82	83	96	107	121	130	130	TAX RATE 2022-24	
UP/DOWN VOLUME	0.8	0.7	0.8	1.0	1.1	0.9	0.9	1.1	1.0	BACKLOG 2022-24	
ACCUM/DIST RATING	-15	-14	10	30	25	19	18	32	21	R & D 3.10%	
RELATIVE STRENGTH	75	68	66	70	70	57	49	52	45	BK VAL 1.98x '24	
GROUP RANK	65	66	83	87	73	69	81	81	89	DIV SEK 1.10 (0.6%)	
										DIV GR RT+8% (5)	
										BETA 0.68(3.00)	
										ALPHA 0.04 (0.01)	
										2024 EMPLOYEES 1,120 (0%)	

Poor EPS Rank

Deteriorating technical profile. Poor RS Rating

The stock is trading 26% off highs and facing resistance at its 50-and 200-DMA

RS line is trending lower



FINANCIALS	'20	Jun 20	Sep 20	Dec 20	Mar 21	Jun 21	Sep 21	Dec 21	Mar 22	Jun 22	Sep 22	Dec 22	Mar 23	Jun 23	Sep 23	Dec 23	Mar 24	Jun 24	Sep 24	Dec 24	Mar	P/E	53
EPS (SEK)	.74	0.11	0.81	0.99	1.09	0.79	0.89	0.26	0.61	0.96	0.80	0.55	0.74	0.78	0.90	-30.87	0.85	1.06	0.86	1.03	1.10e	2025 Est.:	36.6
EPS % CHANGE	6%	-87%	-17%	+11%	+47%	+618%	+10%	-74%	-44%	+22%	-10%	+112%	+21%	-19%	+12%	-5,713%	+15%	+36%	-4%	+103%	+29%	2026 Est.:	221
SALES (MIL SEK)	3.9	209.2	320.1	382.4	379.0	382.0	405.6	514.2	752.0	829.0	798.0	855.0	854.0	905.0	848.0	904.0	841.0	941.0	867.0	959.0	923.5e	5-yr High:	221
SALES % CHANGE	7%	-45%	-15%	-7%	+14%	+83%	+27%	+34%	+98%	+117%	+97%	+66%	+14%	+9%	+6%	+6%	-2%	+4%	+2%	+6%	+10%	5-yr Low:	32
EPS % SURPRISE	7%	-59.8%	+106.1%	+46.2%	+32.1%	+5.3%	+27.1%	-44.3%	-54.4%	+92.0%	-6.9%	-40.5%	-24.5%	-24.8%	+17.3%	-3.5K%	-8.3%	+2.9%	-20.3%	-6.9%		vs Ind. Avg.:	0.9x
FUNDS	159	161	168	166	179	199	254	298	312	309	310	291	275	304	290	291	290	284	285	282			
SHARES HELD BY FUNDS	8M	28M	29M	27M	29M	29M	30M	30M	29M	31M	29M	27M	29M	37M	36M	39M	38M	38M	37M	39M			