



WILLIAM  
**O'NEIL**+CO.

# Global Laggards

February 20, 2025

## Overview

In 1963, we began profiling the characteristics of top-performing stocks prior to their outstanding runs in market cycles dating back to the 1880s. Through our decades of research, we have produced powerful proprietary Ratings and Rankings that help identify leading and lagging stocks. These metrics form the foundation of our O'Neil Methodology (OM) and our evaluation services.

Our Global Laggards list comprises stocks that have poor O'Neil Ratings and Rankings. This list has been curated by our sector analysts to find stocks showing technical weakness. We believe these stocks are laggards relative to their own domestic markets. We recommend that they be underweighted as they may be vulnerable to further downside risk and underperformance.

### Criteria used to build the list include:

- Our proprietary Relative Strength Rating gauges the market's top performers by looking at a stock's price change relative to all stocks within a country. The rating is calculated over 12 months, with higher weighting for more recent months. Stocks are ranked in order of greatest percentage price change and assigned a rank from 99 (best) to 1 (worst). Stocks on this list will usually show a low or declining RS Rating.
- Our proprietary Accumulation/Distribution Rating shows where money is flowing by tracking the relative degree of institutional buying and selling over the prior 13 weeks. It is a technical rating based on price and volume statistics, where A = best and E = worst. Stocks on this list will usually have a low or falling Accumulation/Distribution Rating, indicating institutional selling.
- Our unique Negative Alerts Score uses 11 monitoring characteristics to detect a stock's decline, allowing you to act early on weakening holdings. Stocks on this list will usually have multiple alerts, indicating a possible breakdown.

*Stocks in the table below are believed by our analysts to warrant greater attention due to their vulnerability.*

### United States Highlighted Stocks

Symbol	Name	Sector Name	Industry Group Name	Market Value, USD (Mil)	Avg Daily Dollar Vol (000), USD	Short Interest, % of Float	Negative Alert Score, 10 Wks	EPS Rank	RS Rating	A/D Rating
<a href="#">WERN</a>	Werner Enterprises Inc	Transportation	Transportation-Truck	2,101	22,723	7.3%	5	10	19	D-
<a href="#">TFII</a>	Tfi International Inc	Transportation	Transportation-Truck	10,800	28,993	1.2%	7	76	19	E
<a href="#">ENSG</a>	Ensign Group Inc	Health Care	Medical-Long-term Care	7,261	50,695	4.5%	5	93	26	D
<a href="#">CLH</a>	Clean Harbors Inc	Capital Equipment	Pollution Control	11,689	80,205	1.0%	6	89	32	E
<a href="#">EXP</a>	Eagle Materials Inc	Basic Material	Bldg-Cement/Concr/Ag	8,003	79,486	2.5%	7	77	21	D-
<a href="#">IOSP</a>	Innospec Inc	Basic Material	Chemicals-Specialty	2,580	13,337	1.2%	5	50	16	D+
<a href="#">MKTX</a>	Marketaxess Holdings Inc	Financial	Finance-Invest Bnk/Bkrs	7,239	97,532	4.0%	4	66	14	D-
<a href="#">NYT</a>	New York Times Co Cl A	Consumer Cyclical	Media-Newspapers	8,031	79,768	4.3%	6	93	36	C
<a href="#">ANF</a>	Abercrombie & Fitch Co	Retail	Retail-Apparel/Shoes/Acc	5,308	2,14,866	9.4%	6	96	11	E
<a href="#">OLED</a>	Universal Display Corp	Technology	Elec-Misc Products	7,074	95,039	3.7%	5	90	15	D+

## Developed Markets Highlighted Stocks

Symbol	Name	Trading Country	Sector Name	Industry Group Name	Market Value, USD (Mil)	Avg Daily Dollar Vol (000), USD	Negative Alert Score, 10 Wks	EPS Rank	RS Rating	A/D Rating
<a href="#">NXT.AU</a>	Nextdc	Australia	Technology	Internet-Network Sltns	5,810	15,657	4	19	28	D-
<a href="#">KS@N.JP</a>	Ngk Spark Plug	Japan	Consumer Cyclical	Auto/Truck-Original Eqp	5,865	17,195	4	84	39	D
<a href="#">CL@N.JP</a>	Chubu Elec.Power	Japan	Utility	Utility-Electric Power	7,854	22,690	5	7	15	E
<a href="#">ATRJ.SE</a>	Atrium Ljungberg B	Sweden	Financial	Real Estate Dvlpmt/Ops	2,143	1,435	6	41	31	D-
<a href="#">ENAG.ES</a>	Enagas	Spain	Energy	Oil&Gas-Transprt/Pipeline	3,263	14,215	4	35	12	D-
<a href="#">UM@N.JP</a>	Mitsubishi Electric	Japan	Capital Equipment	Diversified Operations	32,853	74,627	5	86	29	D-

## Emerging Markets Highlighted Stocks

Symbol	Name	Trading Country	Sector Name	Industry Group Name	Market Value, USD (Mil)	Avg Daily Dollar Vol (000), USD	Negative Alert Score, 10 Wks	EPS Rank	RS Rating	A/D Rating
<a href="#">IRI.IN</a>	Indian Railway Catering And Tourism Corp	India	Consumer Cyclical	Leisure-Travel Booking	6,710	11,061	4	78	34	B-
<a href="#">MLC.IN</a>	United Spirits	India	Consumer Staple	Beverages-Alcoholic	11,131	13,418	3	66	66	D+
<a href="#">IT.IN</a>	ITC	India	Consumer Staple	Tobacco	58,559	72,800	5	52	58	D-
<a href="#">ICT.PH</a>	Intl.Ctnr.Term.Svs.	Philippines	Financial	Real Estate Dvlpmt/Ops	12,042	8,349	4	95	38	D+
<a href="#">LEE.SA</a>	Leejam Sports	Saudi Arabia	Consumer Cyclical	Leisure-Services	2,259	5,618	4	79	3	D+

## U.S. Market

Symbol	Name	Sector Name	Industry Group Name	Market Value, USD (Mil)	Avg Daily Dollar Vol (000), USD	Short Interest, % of Float	Negative Alert Score, 10 Wks	EPS Rank	RS Rating	A/D Rating
BG	Bunge Global	Basic Material	Agricultural Operations	9,801	1,15,951	2.7%	4	47	10	E
EXP	Eagle Materials Inc	Basic Material	Bldg-Cement/Concrt/Ag	8,003	79,486	2.5%	7	77	21	D-
MOS	Mosaic Company	Basic Material	Chemicals-Agricultural	8,615	1,22,929	3.1%	4	34	30	D+
WLK	Westlake Corporation	Basic Material	Chemicals-Basic	14,591	66,030	4.5%	5	60	14	D
ALB	Albemarle Corp	Basic Material	Chemicals-Specialty	9,804	1,89,738	11.3%	5	26	11	C-
BCPC	Balchem Corp	Basic Material	Chemicals-Specialty	5,311	21,291	1.3%	7	72	36	C
CBT	Cabot Corp	Basic Material	Chemicals-Specialty	4,790	35,239	4.4%	9	88	19	E
FUL	Fuller H B Co	Basic Material	Chemicals-Specialty	3,223	24,704	2.4%	6	58	11	D
WDFC	W D 40 Co	Basic Material	Chemicals-Specialty	3,140	22,687	6.6%	6	61	20	D+
ASH	Ashland Inc	Basic Material	Chemicals-Specialty	3,115	40,463	3.4%	6	69	11	D+
IOSP	Innospec Inc	Basic Material	Chemicals-Specialty	2,580	13,337	1.2%	5	50	16	D+
MTX	Minerals Technologies	Basic Material	Chemicals-Specialty	2,267	11,663	0.9%	8	79	21	E
AG	First Majestic Silver	Basic Material	Mining-Gold/Silver/Gems	2,622	79,269	4.9%	3	15	20	C
FCX	Freeport McMoRan Inc	Basic Material	Mining-Metal Ores	56,126	5,16,016	1.5%	6	71	18	C+
TECK	Teck Resources Ltd	Basic Material	Mining-Metal Ores	21,820	1,12,455	1.6%	5	67	23	C
CCJ	Cameco Corp	Basic Material	Mining-Metal Ores	20,604	1,91,530	4.0%	5	28	26	D+
NXE	Nexgen Energy Ltd	Basic Material	Mining-Metal Ores	3,334	44,323	11.1%	6	55	14	C-
HBM	Hudbay Minerals Inc	Basic Material	Mining-Metal Ores	3,104	43,765	1.4%	7	39	36	C-
UEC	Uranium Energy Corp	Basic Material	Mining-Metal Ores	2,545	43,624	11.3%	6	4	18	D
DNN	Denison Mines Corp	Basic Material	Mining-Metal Ores	1,426	52,501	5.8%	6	4	13	D
GPK	Graphic Packaging Hldg	Basic Material	Paper & Paper Products	8,043	59,592	6.0%	7	68	30	D-
PKX	P O S C O Holdings Inc	Basic Material	Steel-Producers	14,020	12,709	0.4%	5	13	9	E
GD	General Dynamics Corp	Capital Equipment	Aerospace/Defense	65,993	4,27,413	1.1%	6	78	17	E
NOC	Northrop Grumman Corp	Capital Equipment	Aerospace/Defense	62,530	3,72,117	1.4%	5	74	19	E
LHX	L3Harris Technologies	Capital Equipment	Aerospace/Defense	36,527	2,41,308	1.3%	8	63	15	E
TXT	Textron Inc	Capital Equipment	Aerospace/Defense	13,247	94,039	2.0%	5	63	16	D-
TTD	The Trade Desk Inc Cl A	Capital Equipment	Comml Svcs-Advertising	34,129	4,31,197	2.3%	5	98	10	E
OMC	Omnicom Group	Capital Equipment	Comml Svcs-Advertising	16,438	2,21,442	8.1%	7	75	18	C
IBTA	Ibotta Inc Cl A	Capital Equipment	Comml Svcs-Advertising	1,966	20,659	8.8%	5	62	42	D
KBR	K B R Inc	Capital Equipment	Comml Svcs-Consulting	6,805	72,258	1.6%	6	89	15	E
FCN	F T I Consulting Inc	Capital Equipment	Comml Svcs-Consulting	6,518	43,661	1.1%	4	75	22	C-
EXPO	Exponent Inc	Capital Equipment	Comml Svcs-Consulting	4,415	21,114	3.4%	7	77	26	D
MMS	Maximus Inc	Capital Equipment	Comml Svcs-Consulting	3,866	51,424	3.0%	5	86	14	D-
IRM	Iron Mountain Inc	Capital Equipment	Comml Svcs-Document Mgmt	27,136	1,83,177	2.8%	8	65	36	E
PRG	PROG Holdings Inc	Capital Equipment	Comml Svcs-Leasing	1,281	11,905	6.0%	3	56	10	E

Symbol	Name	Sector Name	Industry Group Name	Market Value, USD (Mil)	Avg Daily Dollar Vol (000), USD	Short Interest, % of Float	Negative Alert Score, 10 Wks	EPS Rank	RS Rating	A/D Rating
DNB	Dun & Bradstreet Holding	Capital Equipment	Comml Svcs-Market Rsrch	4,265	33,146	8.1%	4	43	22	E
RHI	Robert Half Inc	Capital Equipment	Comml Svcs-Staffing	6,154	65,558	9.2%	5	24	17	D-
KFY	Korn Ferry	Capital Equipment	Comml Svcs-Staffing	3,435	23,255	2.3%	6	91	30	D+
ATR	Aptargroup Inc	Capital Equipment	Containers/Packaging	9,752	51,052	0.8%	8	85	26	C-
REYN	Reynolds Consumer Prdcts	Capital Equipment	Containers/Packaging	5,004	13,486	4.3%	6	47	14	D-
SEE	Sealed Air Corp	Capital Equipment	Containers/Packaging	4,833	40,291	4.0%	6	57	23	D-
SLVM	Sylvamo Corp	Capital Equipment	Containers/Packaging	2,922	23,352	2.0%	4	91	30	C+
GEF	Greif Inc Cl A	Capital Equipment	Containers/Packaging	1,571	10,866	2.1%	5	41	23	D-
PHG	Koninklijke Philips ADR	Capital Equipment	Diversified Operations	23,652	15,388	0.2%	5	59	36	D-
CSL	Carlisle Cos Inc	Capital Equipment	Diversified Operations	15,476	1,42,434	2.5%	8	91	17	C-
CHE	Chemed Corporation	Capital Equipment	Diversified Operations	8,390	53,230	2.1%	3	85	32	D+
HUBB	Hubbell Inc	Capital Equipment	Electrical-Power/Equipmt	21,160	2,05,568	3.0%	6	90	32	E
RRX	Regal Rexnord Corp	Capital Equipment	Electrical-Power/Equipmt	8,971	72,622	2.0%	5	81	15	D-
GNRC	Generac Hldgs Inc	Capital Equipment	Electrical-Power/Equipmt	8,403	1,16,186	4.4%	6	84	25	D-
CAT	Caterpillar Inc	Capital Equipment	Machinery-Constr/Mining	1,69,797	7,80,412	1.7%	6	73	42	C-
MTD	Mettler Toledo Intl Inc	Capital Equipment	Machinery-Gen Industrial	27,252	1,65,472	2.0%	5	89	49	C-
IEX	Idex Corp	Capital Equipment	Machinery-Gen Industrial	15,001	1,06,536	1.7%	5	74	21	D-
GWV	W W Grainger Inc	Capital Equipment	Machinery-Tools & Rel	49,725	2,87,423	3.1%	5	91	32	D-
KMT	Kennametal Inc	Capital Equipment	Machinery-Tools & Rel	1,740	21,711	6.6%	5	38	17	D
CMC	Commercial Metals Co	Capital Equipment	Metal Proc & Fabrication	5,916	56,780	3.1%	6	59	21	C
VLTO	Veralto Corp	Capital Equipment	Pollution Control	24,157	1,34,916	1.7%	5	75	30	C+
CLH	Clean Harbors Inc	Capital Equipment	Pollution Control	11,689	80,205	1.0%	6	89	32	E
COLM	Columbia Sportswear Co	Consumer Cyclical	Apparel-Clothing Mfg	5,127	50,179	10.6%	6	55	73	C
PVH	P V H Corp	Consumer Cyclical	Apparel-Clothing Mfg	4,408	76,232	5.3%	5	90	10	E
UA	Under Armour Inc Cl C	Consumer Cyclical	Apparel-Clothing Mfg	1,418	23,580	4.0%	6	45	16	D-
UAA	Under Armour Inc Cl A	Consumer Cyclical	Apparel-Clothing Mfg	1,380	71,480	20.6%	5	45	18	D-
GIII	G Iii Apparel Group Inc	Consumer Cyclical	Apparel-Clothing Mfg	1,268	14,464	11.9%	4	76	46	D
OXM	Oxford Industries Inc	Consumer Cyclical	Apparel-Clothing Mfg	1,122	25,125	16.6%	3	47	15	D+
NKE	Nike Inc Cl B	Consumer Cyclical	Apparel-Shoes & Rel Mfg	90,727	10,23,846	2.5%	5	45	21	B-
DECK	Deckers Outdoor Corp	Consumer Cyclical	Apparel-Shoes & Rel Mfg	22,863	3,84,884	2.3%	5	98	26	D-
CROX	Crocs Inc	Consumer Cyclical	Apparel-Shoes & Rel Mfg	6,406	1,70,952	10.1%	6	85	28	D
SHOO	Steven Madden Limited	Consumer Cyclical	Apparel-Shoes & Rel Mfg	2,824	28,481	5.5%	7	82	22	D+
WWW	Wolverine World Wide Inc	Consumer Cyclical	Apparel-Shoes & Rel Mfg	1,225	19,839	7.4%	3	74	73	D
TM	Toyota Motor Corp Adr	Consumer Cyclical	Auto Manufacturers	2,85,234	70,851	0.1%	3	78	25	C-
BWA	Borgwarner Inc	Consumer Cyclical	Auto/Truck-Original Eqp	6,505	75,807	5.2%	4	74	20	D-
GNTX	Gentex Corp	Consumer Cyclical	Auto/Truck-Original Eqp	5,555	42,969	2.6%	5	60	11	C-
CARR	Carrier Global Corp	Consumer Cyclical	Bldg-A/C & Heating Prds	57,189	3,62,230	1.3%	7	81	36	D+

# Global Laggards

Symbol	Name	Sector Name	Industry Group Name	Market Value, USD (Mil)	Avg Daily Dollar Vol (000), USD	Short Interest, % of Float	Negative Alert Score, 10 Wks	EPS Rank	RS Rating	A/D Rating
AOS	Smith A O Corp	Consumer Cyclical	Bldg-A/C & Heating Prds	7,945	87,635	3.9%	7	65	18	D-
MHK	Mohawk Industries Inc	Consumer Cyclical	Bldg-Constr Prds/Misc	7,414	87,811	3.0%	6	46	22	D-
GMS	G M S Inc	Consumer Cyclical	Bldg-Constr Prds/Misc	3,178	33,563	3.5%	5	65	18	D-
SPB	Spectrum Brands Hldgs	Consumer Cyclical	Bldg-Constr Prds/Misc	2,082	33,791	5.1%	7	56	20	D-
AMWD	American Woodmark Corp	Consumer Cyclical	Bldg-Constr Prds/Misc	1,111	11,122	3.3%	5	40	12	D-
TTC	Toro Co	Consumer Cyclical	Bldg-Hand Tools	8,278	69,287	4.3%	5	92	28	D-
LEN	Lennar Corp Cl A	Consumer Cyclical	Bldg-Resident/Comml	28,222	4,52,146	3.4%	9	65	10	E
NVR	N V R Inc	Consumer Cyclical	Bldg-Resident/Comml	21,289	1,86,600	2.9%	7	89	17	E
PHM	Pulte Group Inc	Consumer Cyclical	Bldg-Resident/Comml	21,230	2,26,844	2.8%	7	95	18	D
TOL	Toll Brothers Inc	Consumer Cyclical	Bldg-Resident/Comml	11,437	2,02,821	3.5%	10	84	18	E
KBH	K B Home	Consumer Cyclical	Bldg-Resident/Comml	4,469	85,518	6.5%	8	95	16	E
GRBK	Green Brick Partners Inc	Consumer Cyclical	Bldg-Resident/Comml	2,645	16,808	2.7%	7	99	23	E
SONO	Sonos Inc	Consumer Cyclical	Consumer Prod-Electronic	1,470	24,616	6.6%	3	10	19	D-
ENR	Energizer Holdings Inc	Consumer Cyclical	Consumer Prod-Specialty	2,231	17,500	3.4%	4	71	28	D+
NWL	Newell Brands Inc	Consumer Cyclical	Hsehold-Appliances/Wares	2,872	48,861	3.3%	6	19	17	C+
MBC	MasterBrand Inc	Consumer Cyclical	Hsehold-Appliances/Wares	1,941	15,965	2.9%	4	48	26	E
MLKN	Millerknoll Inc	Consumer Cyclical	Hsehold/Office Furniture	1,542	17,326	3.2%	6	35	18	D+
LVS	Las Vegas Sands Corp	Consumer Cyclical	Leisure-Gaming/Equip	31,609	2,31,386	4.6%	5	18	22	D-
MGM	M G M Resorts Intl	Consumer Cyclical	Leisure-Gaming/Equip	10,917	1,82,096	5.5%	5	11	32	B
WYNN	Wynn Resorts Ltd	Consumer Cyclical	Leisure-Gaming/Equip	9,820	2,28,657	6.1%	4	43	49	A-
LNW	Light & Wonder Inc	Consumer Cyclical	Leisure-Gaming/Equip	9,410	65,936	3.2%	3	70	76	B
CZR	Caesars Entertainment	Consumer Cyclical	Leisure-Gaming/Equip	8,093	1,67,425	7.3%	4	3	46	C+
MLCO	Melco Resorts & Ent Ads	Consumer Cyclical	Leisure-Gaming/Equip	2,490	23,725	3.1%	4	81	21	B
HTHT	H World Group Ltd Ads	Consumer Cyclical	Leisure-Lodging	11,735	75,679	5.9%	3	35	71	A
H	Hyatt Hotels Corp Cl A	Consumer Cyclical	Leisure-Lodging	6,159	95,170	10.1%	6	29	42	D+
BC	Brunswick Corp	Consumer Cyclical	Leisure-Products	4,273	47,385	5.4%	5	29	13	E
GOLF	Acushnet Holdings Corp	Consumer Cyclical	Leisure-Products	4,008	29,620	14.2%	5	75	32	D-
HOG	Harley Davidson Inc	Consumer Cyclical	Leisure-Products	3,395	52,707	8.3%	6	42	11	D-
YETI	Yeti Holdings Inc	Consumer Cyclical	Leisure-Products	3,164	57,922	13.3%	4	88	28	D+
LYFT	Lyft Inc Cl A	Consumer Cyclical	Leisure-Services	5,479	2,45,324	11.3%	5	73	18	D+
FUN	Six Flags Entertainment	Consumer Cyclical	Leisure-Services	4,683	52,595	6.5%	4	6	66	B-
HGV	Hilton Grand Vacations	Consumer Cyclical	Leisure-Services	4,206	33,162	7.3%	3	53	60	C-
CAR	Avis Budget Group Inc	Consumer Cyclical	Leisure-Services	3,307	58,501	13.9%	4	6	25	B+
PRKS	United Parks & Resorts	Consumer Cyclical	Leisure-Services	3,003	40,675	9.7%	5	77	63	B
MSGE	M S G Entertainment Cl A	Consumer Cyclical	Leisure-Services	1,546	14,681	3.3%	5	22	49	B
ABNB	Airbnb Inc Cl A	Consumer Cyclical	Leisure-Travel Booking	68,074	7,70,721	3.6%	4	77	82	B+
WLY	John Wiley & Sons Cl A	Consumer Cyclical	Media-Books	1,810	16,205	4.2%	6	87	28	C-

Symbol	Name	Sector Name	Industry Group Name	Market Value, USD (Mil)	Avg Daily Dollar Vol (000), USD	Short Interest, % of Float	Negative Alert Score, 10 Wks	EPS Rank	RS Rating	A/D Rating
NYT	New York Times Co Cl A	Consumer Cyclical	Media-Newspapers	8,031	79,768	4.3%	6	93	36	C
BUD	Anheuser Busch Inbev Adr	Consumer Staple	Beverages-Alcoholic	92,416	1,28,321	0.3%	5	80	18	B-
DEO	Diageo Plc Ads	Consumer Staple	Beverages-Alcoholic	64,757	1,26,884	0.2%	6	58	14	C+
STZ	Constellation Brands A	Consumer Staple	Beverages-Alcoholic	31,001	4,16,894	1.6%	7	75	9	C+
BFB	Brown Forman Corp Cl B	Consumer Staple	Beverages-Alcoholic	9,364	96,441	9.7%	5	58	8	C+
SAM	Boston Beer Company	Consumer Staple	Beverages-Alcoholic	2,128	34,989	6.7%	6	36	10	E
KO	Coca Cola Co	Consumer Staple	Beverages-Non-Alcoholic	3,00,383	12,04,749	0.7%	4	78	73	B+
MNST	Monster Beverage Corp	Consumer Staple	Beverages-Non-Alcoholic	50,017	2,94,400	2.7%	2	67	36	B
KDP	Keurig Dr Pepper Inc	Consumer Staple	Beverages-Non-Alcoholic	46,208	2,94,450	2.1%	5	77	36	B-
KOF	Coca Cola Femsa Sab Ads	Consumer Staple	Beverages-Non-Alcoholic	4,441	13,563	1.1%	2	77	30	A-
CL	Colgate Palmolive Co	Consumer Staple	Cosmetics/Personal Care	70,182	4,09,816	1.2%	8	65	23	D-
KMB	Kimberly-Clark Corp	Consumer Staple	Cosmetics/Personal Care	45,301	3,03,860	1.5%	8	48	53	B-
KVUE	Kenvue Inc	Consumer Staple	Cosmetics/Personal Care	42,697	2,75,979	1.6%	6	37	57	B-
IFF	Intil Flavors & Fragrance	Consumer Staple	Cosmetics/Personal Care	20,824	1,14,524	1.6%	6	82	22	D-
EPC	Edgewell Personal Care	Consumer Staple	Cosmetics/Personal Care	1,440	15,672	4.2%	7	30	13	D
MDLZ	Mondelez Intl Inc	Consumer Staple	Food-Confectionery	80,231	6,83,998	1.6%	7	74	20	B
HSY	Hershey Company	Consumer Staple	Food-Confectionery	24,227	3,82,739	4.7%	4	86	18	B
INGR	Ingredion Inc	Consumer Staple	Food-Grain & Related	8,218	68,341	2.1%	6	95	32	E
ANDE	Andersons Inc	Consumer Staple	Food-Grain & Related	1,597	17,059	2.1%	8	87	26	B-
HRL	Hormel Foods Co	Consumer Staple	Food-Meat Products	15,674	77,069	4.4%	4	46	21	E
SXT	Sensient Technologies Cp	Consumer Staple	Food-Misc Preparation	2,988	14,156	1.5%	7	79	26	C-
PEP	Pepsico Inc	Consumer Staple	Food-Packaged	1,98,936	10,10,944	1.3%	6	77	18	B-
UL	Unilever Plc	Consumer Staple	Food-Packaged	1,38,080	1,45,827	0.1%	8	63	36	B-
GIS	General Mills Inc	Consumer Staple	Food-Packaged	31,899	2,66,876	4.1%	6	72	18	E
CPB	The Campbell's Company	Consumer Staple	Food-Packaged	11,506	1,12,354	6.8%	6	69	16	E
LW	Lamb Weston Holdings Inc	Consumer Staple	Food-Packaged	8,145	1,55,428	7.0%	4	40	9	D+
POST	Post Holdings Inc	Consumer Staple	Food-Packaged	6,381	68,341	4.9%	7	63	57	B
FRPT	Freshpet Inc	Consumer Staple	Food-Packaged	5,838	83,774	8.8%	4	74	57	D+
JJSF	J & J Snack Foods Corp	Consumer Staple	Food-Packaged	2,433	15,444	5.9%	9	57	11	E
KLG	WK Kellogg Co	Consumer Staple	Food-Packaged	1,709	21,578	14.4%	6	47	81	B
THS	Treehouse Foods Inc	Consumer Staple	Food-Packaged	1,507	19,024	4.7%	5	71	15	D-
UTZ	Utz Brands Inc	Consumer Staple	Food-Packaged	1,146	12,613	12.3%	6	90	11	D-
CLX	Clorox Co	Consumer Staple	Soap & Clnng Preparatns	18,517	1,89,633	3.2%	5	51	32	E
ORA	Ormat Technologies Inc	Energy	Energy-Alternative/Other	4,131	43,831	4.4%	8	51	19	D-
CNR	Core Natural Resources	Energy	Energy-Coal	4,246	64,161	6.4%	9	69	11	E
HCC	Warrior Met Coal Inc	Energy	Energy-Coal	2,642	34,973	11.1%	7	36	12	C-
BTU	Peabody Energy Corp	Energy	Energy-Coal	1,826	44,452	9.4%	6	18	6	E

Symbol	Name	Sector Name	Industry Group Name	Market Value, USD (Mil)	Avg Daily Dollar Vol (000), USD	Short Interest, % of Float	Negative Alert Score, 10 Wks	EPS Rank	RS Rating	A/D Rating
FSLR	First Solar Inc	Energy	Energy-Solar	17,221	3,35,628	6.1%	5	69	15	D
BTE	Baytex Energy Corp	Energy	Oil&Gas-Cdn Expl&Prod	2,022	56,872	5.3%	5	36	12	D-
VAL	Valaris Limited	Energy	Oil&Gas-Drilling	3,177	67,095	13.6%	4	82	10	C
RIG	Transocean Ltd	Energy	Oil&Gas-Drilling	3,059	87,729	19.1%	5	44	9	D
HP	Helmerich & Payne Inc	Energy	Oil&Gas-Drilling	2,581	40,293	10.5%	7	23	9	D-
SDRL	Seadrill Ltd	Energy	Oil&Gas-Drilling	1,973	23,876	10.2%	6	31	8	E
HAL	Halliburton Co	Energy	Oil&Gas-Field Services	23,360	2,72,384	3.2%	6	67	14	D+
LBRT	Liberty Energy Inc Cl A	Energy	Oil&Gas-Field Services	2,878	54,968	8.9%	4	8	21	E
XOM	Exxon Mobil Corp	Energy	Oil&Gas-Integrated	4,85,306	17,43,854	0.9%	8	56	28	D
CVE	Cenovus Energy Inc	Energy	Oil&Gas-Integrated	28,463	1,45,126	0.8%	6	76	19	D+
COP	Conocophillips	Energy	Oil&Gas-Intl Expl&Prod	1,26,742	7,11,388	1.0%	7	56	18	C
NOV	N O V Inc	Energy	Oil&Gas-Machinery/Equip	5,846	67,359	4.9%	3	68	19	C-
WFRD	Weatherford Intl plc	Energy	Oil&Gas-Machinery/Equip	5,148	83,191	3.6%	5	32	10	C
WKC	World Kinect Corporation	Energy	Oil&Gas-Refining/Mktg	1,577	19,580	9.5%	4	47	57	D-
CLMT	Calumet Inc	Energy	Oil&Gas-Refining/Mktg	1,323	18,385	10.7%	6	4	17	D
STNG	Scorpio Tankers Inc	Energy	Oil&Gas-Transprt/Pipeline	2,134	42,921	5.0%	5	11	7	D+
INSW	International Seaways	Energy	Oil&Gas-Transprt/Pipeline	1,864	39,474	6.7%	5	14	12	C-
TNK	Teekay Tankers Ltd Cl A	Energy	Oil&Gas-Transprt/Pipeline	1,165	18,666	2.1%	5	14	12	C
FANG	Diamondback Energy Inc	Energy	Oil&Gas-U S Expl&Prod	46,896	3,48,998	1.4%	4	81	18	D-
SHG	Shinhan Financial Gp Adr	Financial	Banks-Foreign	17,251	7,384	0.2%	5	74	20	D+
CLBK	Columbia Financial Inc	Financial	Banks-Northeast	1,643	1,495	2.0%	5	30	22	D-
LOB	Live Oak Bancshares Inc	Financial	Banks-Southeast	1,512	6,294	3.6%	5	46	14	D+
WAFD	WaFd	Financial	Banks-West/Southwest	2,428	14,934	2.3%	6	48	23	E
TFIN	Triumph Financial	Financial	Banks-West/Southwest	1,677	9,536	8.1%	5	10	15	D-
WABC	Westamerica Bancorp	Financial	Banks-West/Southwest	1,334	5,659	0.8%	4	62	32	C
WD	Walker & Dunlop Inc	Financial	Finance-Commercial Loans	2,849	15,581	2.2%	5	41	15	D-
MKTX	Marketaxess Holdings Inc	Financial	Finance-Invest Bnk/Bkrs	7,239	97,532	4.0%	4	66	14	D-
AMG	Affiliated Managers Grp	Financial	Finance-Investment Mgmt	4,957	35,341	2.2%	5	79	36	D-
DBRG	Digitalbridge Group Cl A	Financial	Finance-Investment Mgmt	1,838	22,968	8.3%	4	6	14	C-
FIS	Fidelity Nati Info Serv	Financial	Financial Svcs-Specialty	36,861	2,24,470	2.6%	5	84	20	E
EFX	Equifax Inc	Financial	Financial Svcs-Specialty	30,126	2,48,737	1.8%	5	72	26	D-
HRB	H & R Block Inc	Financial	Financial Svcs-Specialty	7,019	62,131	10.5%	6	45	28	D-
DFIN	Donnelley Financial Sol	Financial	Financial Svcs-Specialty	1,404	10,736	4.8%	3	48	12	D-
GNW	Genworth Financial Inc	Financial	Insurance-Life	2,878	25,879	1.5%	3	75	42	C-
ACGL	Arch Capital Group Ltd	Financial	Insurance-Prop/Cas/Titl	33,327	1,68,272	1.3%	7	72	26	E
EG	Everest Group Ltd	Financial	Insurance-Prop/Cas/Titl	14,449	1,33,776	2.3%	7	59	19	E
RNR	Renaissancere Holdings	Financial	Insurance-Prop/Cas/Titl	11,336	1,20,218	3.3%	5	85	25	C-



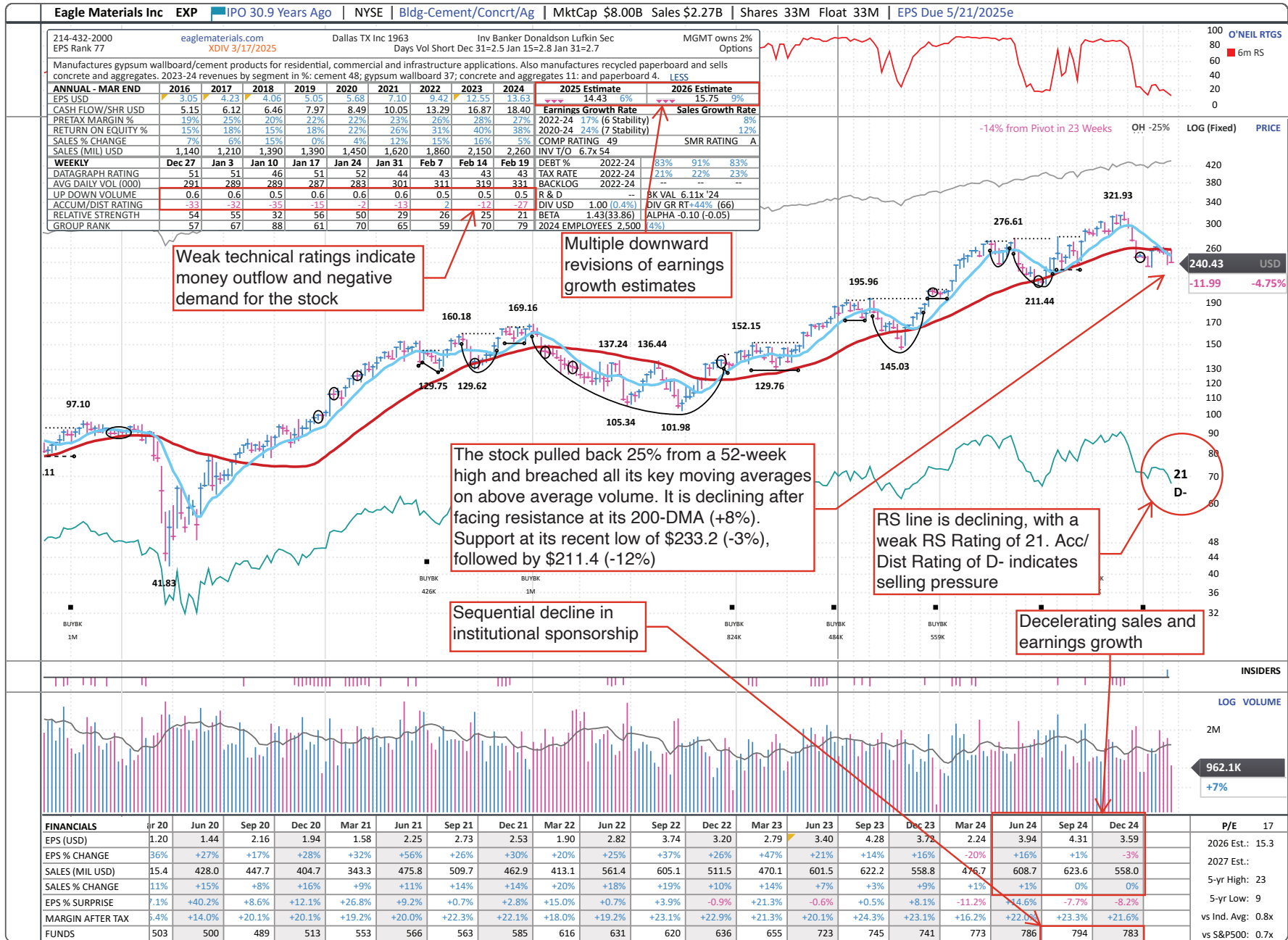
Symbol	Name	Sector Name	Industry Group Name	Market Value, USD (Mil)	Avg Daily Dollar Vol (000), USD	Short Interest, % of Float	Negative Alert Score, 10 Wks	EPS Rank	RS Rating	A/D Rating
AFG	American Financial Group	Financial	Insurance-Prop/Cas/Titl	10,193	45,164	1.3%	5	69	22	E
SIGI	Selective Ins Group Inc	Financial	Insurance-Prop/Cas/Titl	4,862	30,745	2.3%	4	33	15	D-
FIHL	Fidelis Insurance Hldgs	Financial	Insurance-Prop/Cas/Titl	1,887	8,229	1.1%	7	35	28	C
VTMX	Vesta Real Estate Ads	Financial	Real Estate Dvlpmt/Ops	2,219	4,069	0.7%	3	77	15	D
FOR	Forestar Group Inc	Financial	Real Estate Dvlpmt/Ops	1,173	4,054	3.0%	5	73	10	D
PINC	Premier Inc Cl A	Health Care	Comml Svcs-Healthcare	1,704	23,828	10.5%	6	65	19	D-
ROIV	Roivant Sciences Ltd	Health Care	Medical-Biomed/Biotech	7,610	47,441	10.4%	5	9	23	D-
KRYS	Krystal Biotech Inc	Health Care	Medical-Biomed/Biotech	5,292	47,654	12.2%	5	82	73	B-
XENE	Xenon Pharmaceuticals	Health Care	Medical-Biomed/Biotech	2,964	16,182	5.4%	3	13	25	D
MLTX	Moonlake Immunotherp CIA	Health Care	Medical-Biomed/Biotech	2,642	14,816	16.2%	4	2	18	B
KYMR	Kymera Therapeutics Inc	Health Care	Medical-Biomed/Biotech	2,416	18,392	14.0%	6	31	20	C-
VERA	Vera Therapeutics Cl A	Health Care	Medical-Biomed/Biotech	1,877	23,814	18.3%	6	4	8	C+
MNKD	Mannkind Corp	Health Care	Medical-Biomed/Biotech	1,528	12,877	10.2%	5	81	63	E
RCUS	Arcus Biosciences Inc	Health Care	Medical-Biomed/Biotech	1,153	8,869	11.7%	4	18	8	D+
XNCR	Xencor Inc	Health Care	Medical-Biomed/Biotech	1,140	9,945	8.0%	5	3	9	E
DHR	Danaher Corp	Health Care	Medical-Diversified	1,49,764	8,37,405	0.8%	6	58	14	E
MRK	Merck & Co Inc	Health Care	Medical-Ethical Drugs	2,17,612	11,95,567	1.2%	7	56	11	E
PTGX	Protagonist Therapeutics	Health Care	Medical-Ethical Drugs	2,290	22,737	7.6%	5	34	73	D+
TEVA	Teva Pharmaceutical Ads	Health Care	Medical-Generic Drugs	19,706	2,17,872	2.0%	6	55	63	D-
VTRS	Viatis Inc	Health Care	Medical-Generic Drugs	13,094	1,05,365	2.5%	5	38	19	C+
RDY	Dr Reddys Labs Ltd Adr	Health Care	Medical-Generic Drugs	11,127	24,955	2.6%	5	73	20	C-
PRGO	Perrigo Co Plc	Health Care	Medical-Generic Drugs	3,408	31,422	3.9%	3	55	17	C+
UNH	Unitedhealth Group Inc	Health Care	Medical-Managed Care	4,64,237	27,76,634	0.8%	6	86	21	D-
CI	Cigna Group	Health Care	Medical-Managed Care	82,561	6,29,176	1.5%	8	74	19	C+
CNC	Centene Corp	Health Care	Medical-Managed Care	28,671	3,02,951	1.4%	6	86	15	D-
QGEN	QIAGEN NV	Health Care	Medical-Products	8,555	43,628	1.2%	6	68	18	D+
TFX	Teleflex Incorporated	Health Care	Medical-Products	8,114	85,487	2.5%	4	57	14	D+
ICLR	ICON plc	Health Care	Medical-Research Eqp/Svc	16,741	1,80,262	1.7%	4	88	10	C+
ILMN	Illumina Inc	Health Care	Medical-Research Eqp/Svc	16,573	2,41,216	4.1%	6	78	14	E
HOLX	Hologic Inc	Health Care	Medical-Systems/Equip	14,471	1,62,343	2.7%	7	53	15	D-
HAE	Haemonetics Corp	Health Care	Medical-Systems/Equip	3,223	53,990	10.6%	5	84	12	D
ANF	Abercrombie & Fitch Co	Retail	Retail-Apparel/Shoes/Acc	5,308	2,14,866	9.4%	6	96	11	E
AEO	American Eagle Outfitters	Retail	Retail-Apparel/Shoes/Acc	2,737	71,259	8.7%	4	57	9	D
FL	Foot Locker Inc	Retail	Retail-Apparel/Shoes/Acc	1,789	58,431	10.3%	4	22	10	D-
POOL	Pool Corp	Retail	Retail-Leisure Products	13,319	1,21,145	7.1%	4	58	23	D
ASO	Academy Sports & Outdoor	Retail	Retail-Leisure Products	3,550	86,862	11.2%	3	64	32	D+
TGT	Target Corp	Retail	Retail-Major Disc Chains	58,981	6,56,234	2.4%	4	60	26	D+

Symbol	Name	Sector Name	Industry Group Name	Market Value, USD (Mil)	Avg Daily Dollar Vol (000), USD	Short Interest, % of Float	Negative Alert Score, 10 Wks	EPS Rank	RS Rating	A/D Rating
WING	Wingstop Inc	Retail	Retail-Restaurants	7,484	1,63,279	6.6%	4	99	11	E
SG	Sweetgreen Inc Cl A	Retail	Retail-Restaurants	2,404	63,556	15.4%	4	39	25	E
ULTA	Ulta Beauty Inc	Retail	Retail-Specialty	16,758	3,42,610	5.7%	4	71	23	C-
MUSA	Murphy USA Inc	Retail	Retail-Super/Mini Mkts	9,709	91,097	5.9%	4	72	46	D-
GPC	Genuine Parts Co	Retail	Retail/Whlsle-Auto Parts	16,972	1,77,526	2.7%	3	55	21	C-
LOW	Lowe's Companies Inc	Retail	Retail/Whlsle-Bldg Prds	1,38,975	5,46,939	1.3%	5	63	49	D+
SIG	Signet Jewelers Ltd	Retail	Retail/Whlsle-Jewelry	2,416	91,002	9.1%	7	68	5	C
SYX	Sysco Corp	Retail	Wholesale-Food	34,701	2,37,158	2.8%	4	73	25	C
VRNS	Varonis Systems Inc	Technology	Computer Sftwr-Database	4,902	76,561	9.3%	6	87	18	C-
TDC	Teradata Corp	Technology	Computer Sftwr-Database	2,328	22,453	4.7%	3	82	12	D+
PTC	P T C Inc	Technology	Computer Sftwr-Design	20,418	1,66,810	1.5%	6	85	23	D+
ADBE	Adobe Inc	Technology	Computer Sftwr-Desktop	1,99,462	19,59,070	1.8%	7	91	19	D+
PD	Pagerduty Inc	Technology	Computer Sftwr-Desktop	1,657	18,137	11.8%	4	61	23	C
INFA	Informatica Inc Cl A	Technology	Computer Sftwr-Enterprse	5,204	46,432	1.6%	5	90	9	C-
BLKB	Blackbaud Inc	Technology	Computer Sftwr-Enterprse	3,472	12,471	1.4%	5	60	18	E
RNG	RingCentral Inc Cl A	Technology	Computer Sftwr-Enterprse	2,525	35,501	6.5%	4	96	23	D-
RPD	Rapid7 Inc	Technology	Computer Sftwr-Security	2,127	24,764	5.5%	4	26	14	D-
VRNT	Verint Systems Inc	Technology	Computer Sftwr-Security	1,631	21,186	5.2%	3	36	28	D+
AGYS	Agilysys Inc	Technology	Computer-Integrated Syst	2,319	27,815	5.0%	6	92	12	C-
VYX	NCR Voyix	Technology	Computer-Integrated Syst	1,733	16,232	10.8%	5	81	17	D-
PLUS	Eplus Inc	Technology	Computer-Tech Services	1,855	14,661	3.1%	4	62	16	D+
OLED	Universal Display Corp	Technology	Elec-Misc Products	7,074	95,039	3.7%	5	90	15	D+
SYNA	Synaptics Inc	Technology	Elec-Misc Products	2,945	49,388	11.9%	5	75	19	E
CGNX	Cognex Corp	Technology	Elec-Scientific/Msrng	5,706	44,687	2.6%	5	78	14	D
CAMT	Camtek Ltd	Technology	Elec-Scientific/Msrng	3,817	49,888	14.7%	5	99	36	D
IPGP	I P G Photonics Corp	Technology	Elec-Scientific/Msrng	2,819	17,173	5.0%	5	12	15	D
AMD	Advanced Micro Devices	Technology	Elec-Semiconductor Fablss	1,85,984	47,07,394	3.0%	4	97	11	E
MXL	Maxlinear Inc	Technology	Elec-Semiconductor Fablss	1,448	32,028	6.0%	4	4	71	D+
AMAT	Applied Materials Inc	Technology	Elec-Semiconductor Equip	1,42,553	11,64,026	2.5%	4	88	22	C
TER	Teradyne Inc	Technology	Elec-Semiconductor Equip	19,082	3,05,802	3.5%	6	68	46	D+
ONTO	Onto Innovation Inc	Technology	Elec-Semiconductor Equip	8,433	1,46,735	2.9%	4	98	23	D+
FORM	Formfactor Inc	Technology	Elec-Semiconductor Equip	2,954	35,915	4.5%	7	77	15	D
KLIC	Kulicke & Soffa Ind Inc	Technology	Elec-Semiconductor Equip	2,348	21,459	6.7%	5	36	23	D
VECO	Veeco Instruments Inc	Technology	Elec-Semiconductor Equip	1,454	16,627	11.9%	7	65	12	C-
PLAB	Photronics Inc	Technology	Elec-Semiconductor Equip	1,438	12,098	3.3%	6	80	20	E
ON	ON Semiconductor Corp	Technology	Elec-Semiconductor Mfg	24,021	4,63,148	6.5%	6	62	11	D+
ROG	Rogers Corp	Technology	Elec-Semiconductor Mfg	1,677	11,226	2.6%	5	22	15	E

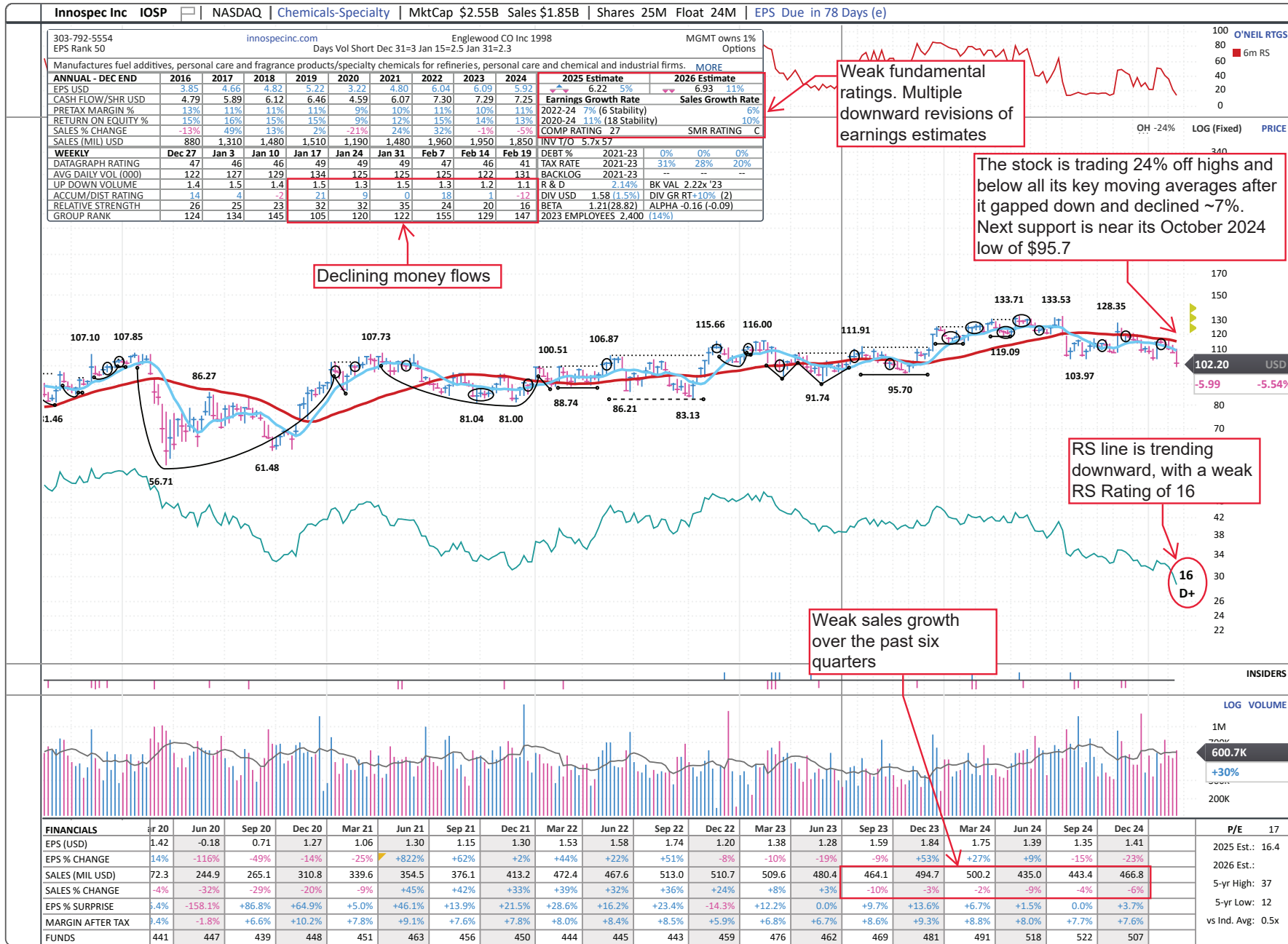
## Global Laggards

Symbol	Name	Sector Name	Industry Group Name	Market Value, USD (Mil)	Avg Daily Dollar Vol (000), USD	Short Interest, % of Float	Negative Alert Score, 10 Wks	EPS Rank	RS Rating	A/D Rating
ARW	Arrow Electronics Inc	Technology	Electronic-Parts	5,842	53,926	6.2%	5	46	22	C-
AVT	Avnet Inc	Technology	Electronic-Parts	4,571	42,297	5.9%	8	50	46	C
LBTYK	Liberty Global Ltd Cl C	Technology	Telecom Svcs-Cable/Satl	1,995	17,443	3.2%	4	37	9	C-
FDX	Fedex Corp	Transportation	Transport-Air Freight	63,870	4,79,138	1.5%	8	51	36	D+
GXO	G X O Logistics Inc	Transportation	Transportation-Logistics	4,832	66,495	3.8%	7	94	10	D-
CNI	Canadian Natl Ry Co	Transportation	Transportation-Rail	64,458	1,38,878	0.3%	4	58	18	C-
CSX	CSX Corp	Transportation	Transportation-Rail	62,519	4,22,364	1.5%	4	70	23	C-
KEX	Kirby Corp	Transportation	Transportation-Ship	6,202	71,998	2.2%	9	94	26	C-
JBHT	Hunt J B Trans Svcs Inc	Transportation	Transportation-Truck	17,056	1,44,743	2.4%	4	52	26	C-
TFII	Tfi International Inc	Transportation	Transportation-Truck	9,653	28,993	1.2%	7	76	19	E
LSTR	Landstar System Inc	Transportation	Transportation-Truck	5,607	49,145	2.5%	6	35	17	E
RXO	RXO Inc	Transportation	Transportation-Truck	3,481	25,926	3.9%	7	25	18	D+
WERN	Werner Enterprises Inc	Transportation	Transportation-Truck	2,101	22,723	7.3%	5	10	19	D-
PCG	P G & E Corporation	Utility	Utility-Diversified	41,980	3,64,079	1.3%	7	38	14	E
NEE	Nextera Energy Inc	Utility	Utility-Electric Power	1,41,873	7,19,053	1.7%	5	78	28	D+
WTRG	Essential Utilities Inc	Utility	Utility-Water Supply	9,784	49,234	1.7%	8	47	23	D+

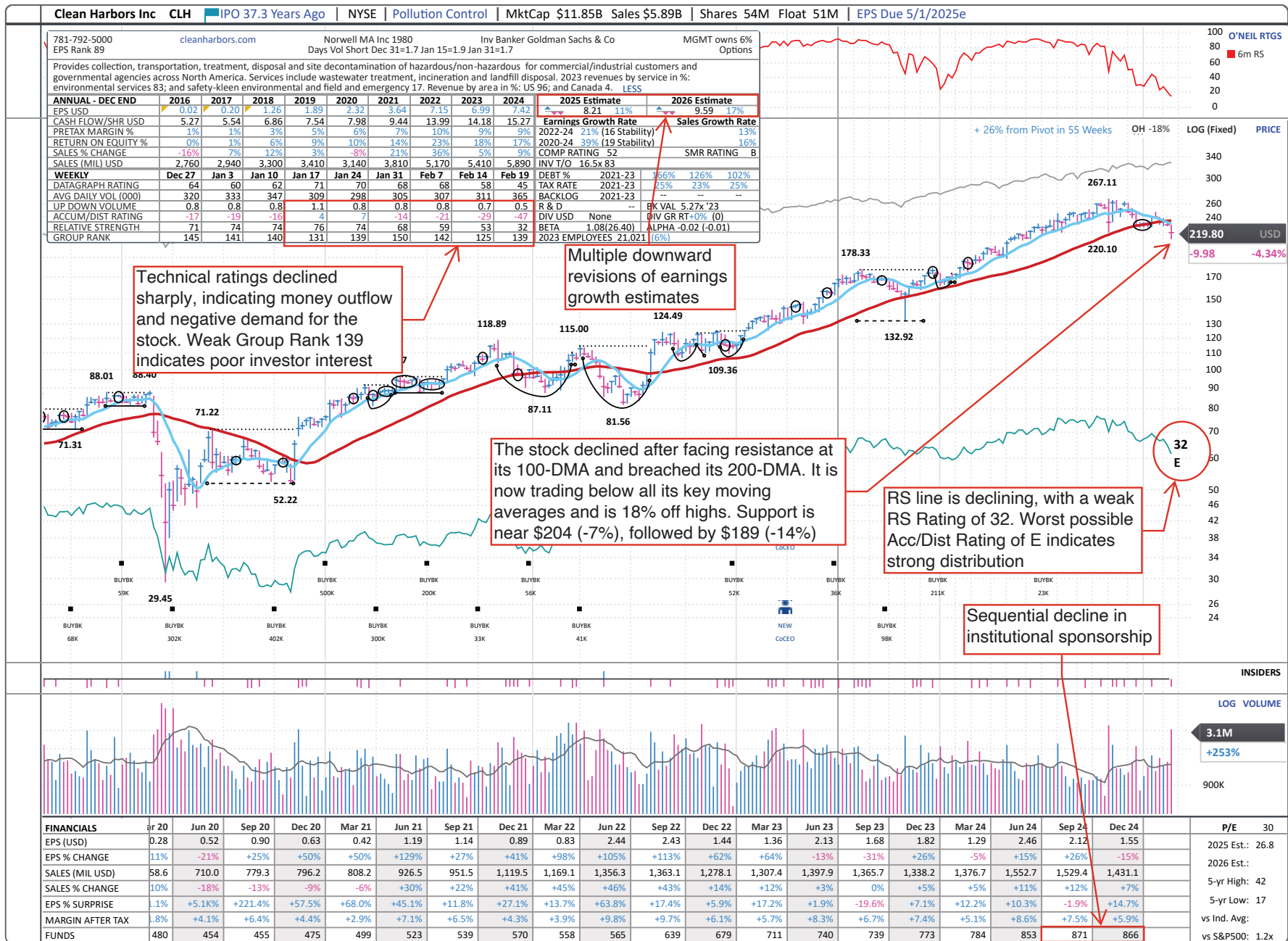
U.S. — Basic Material — Highlighted Laggard



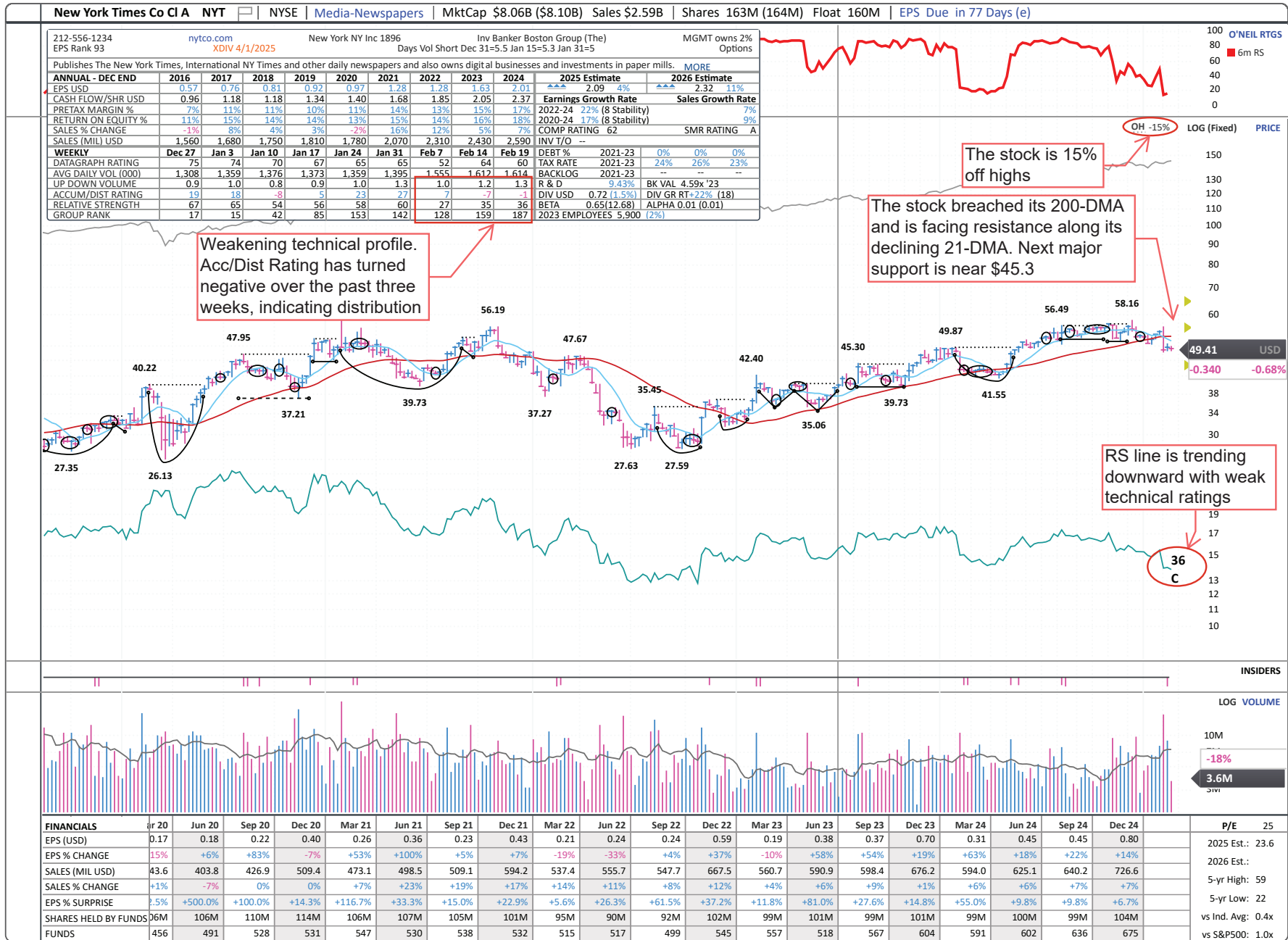
U.S.—Basic Material—Highlighted Laggard



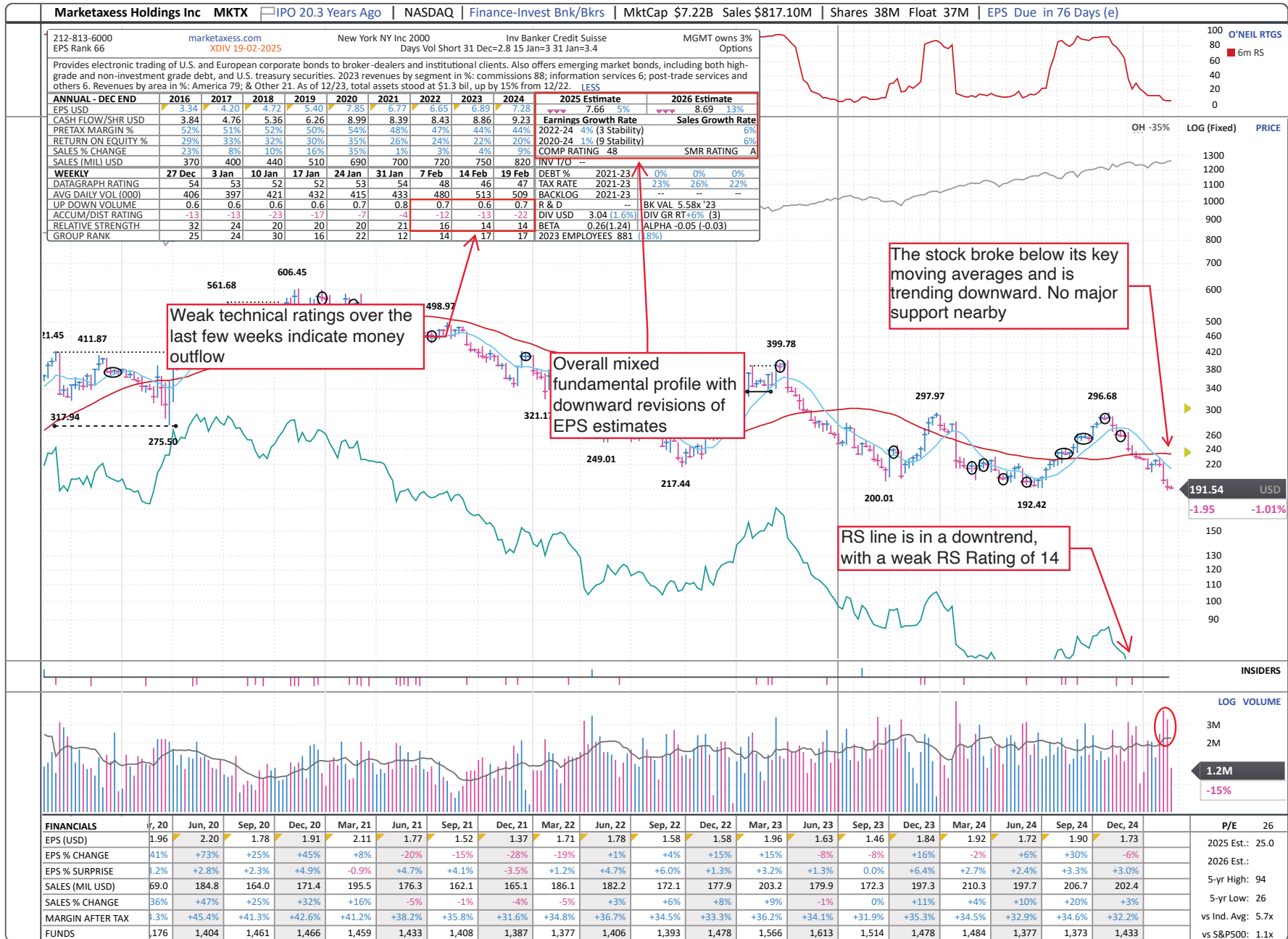
U.S. — Capital Equipment — Highlighted Laggard



U.S.—Consumer Cyclical—Highlighted Laggard

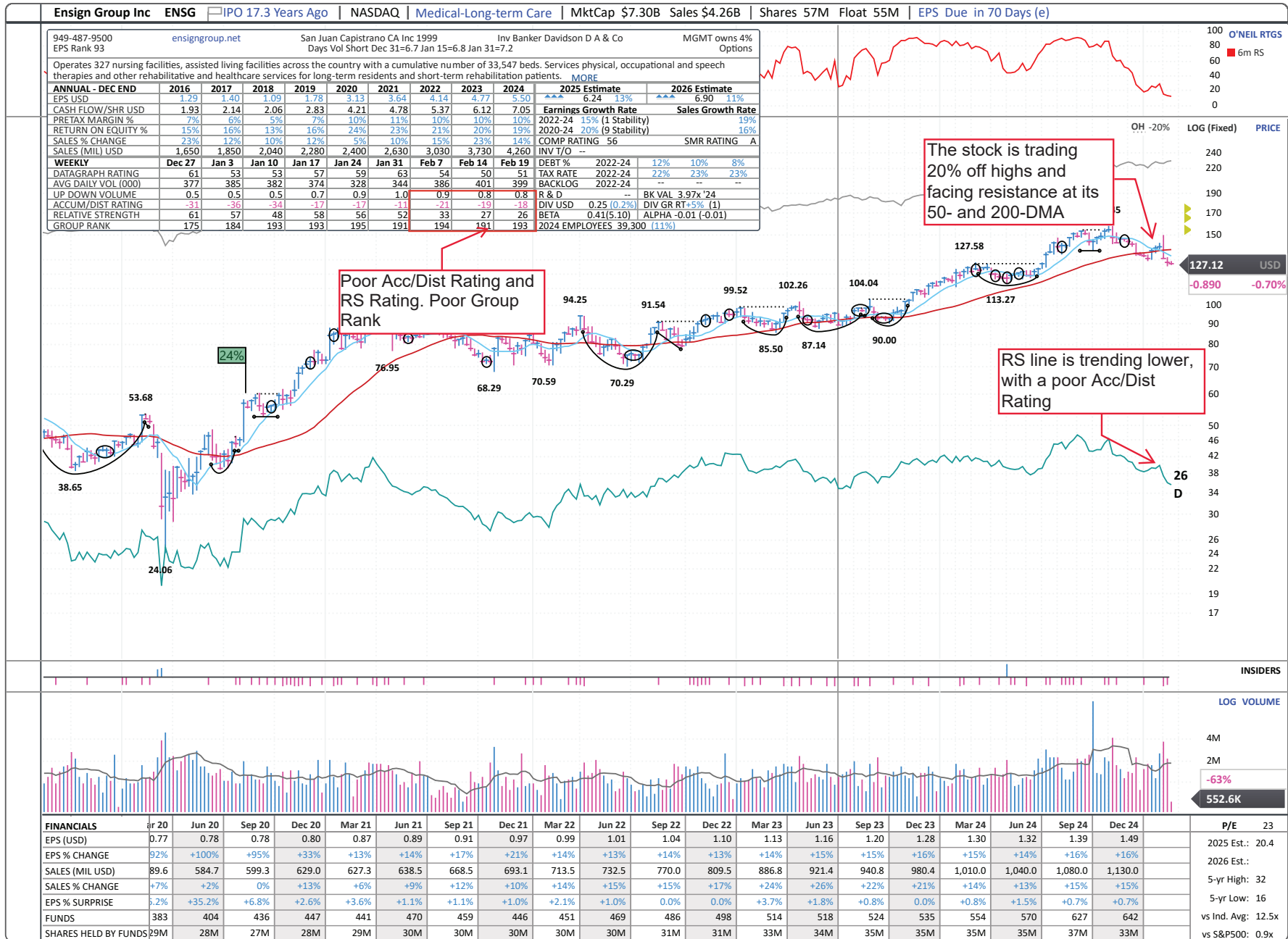


U.S. — Financial — Highlighted Laggard

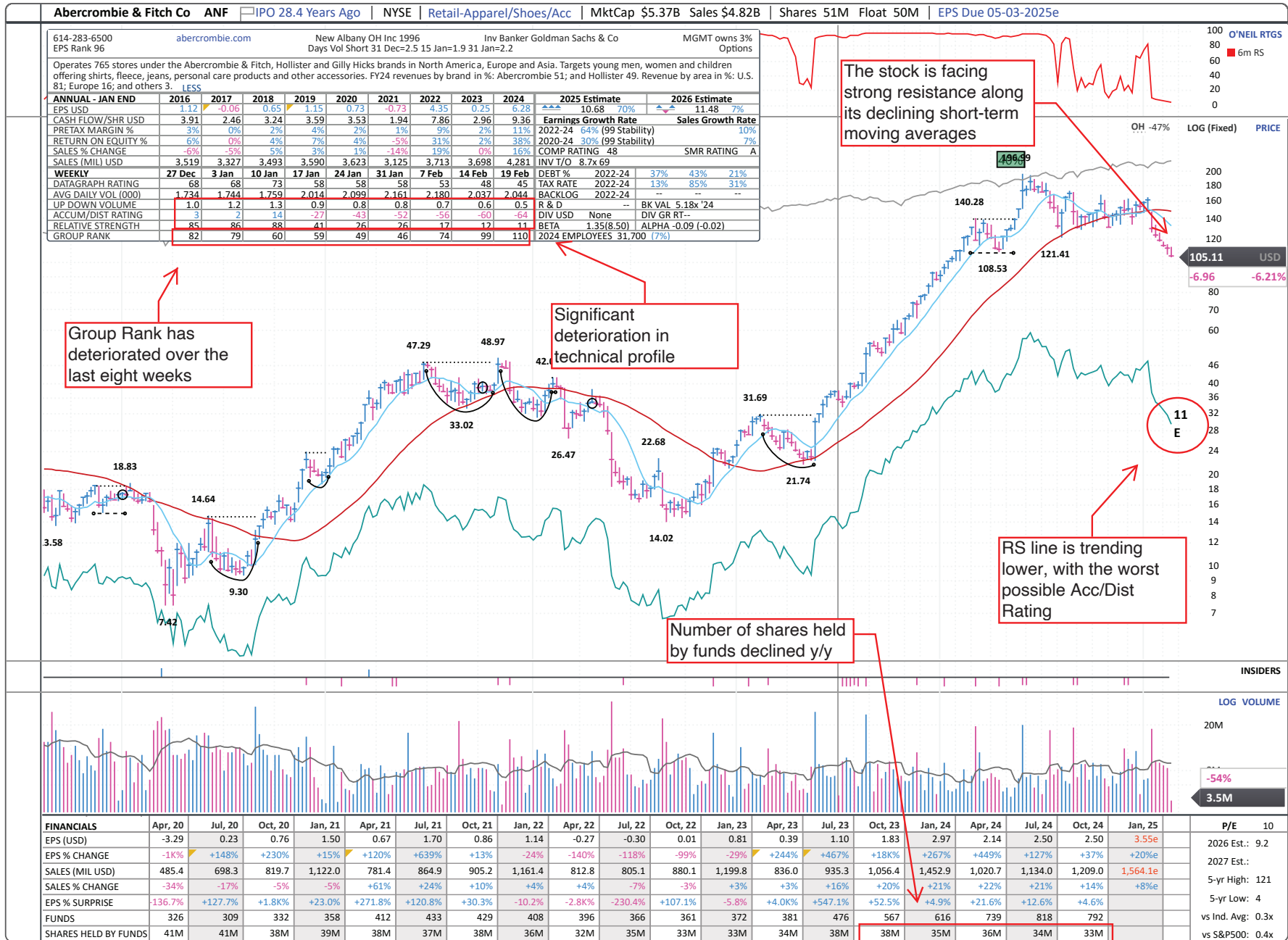




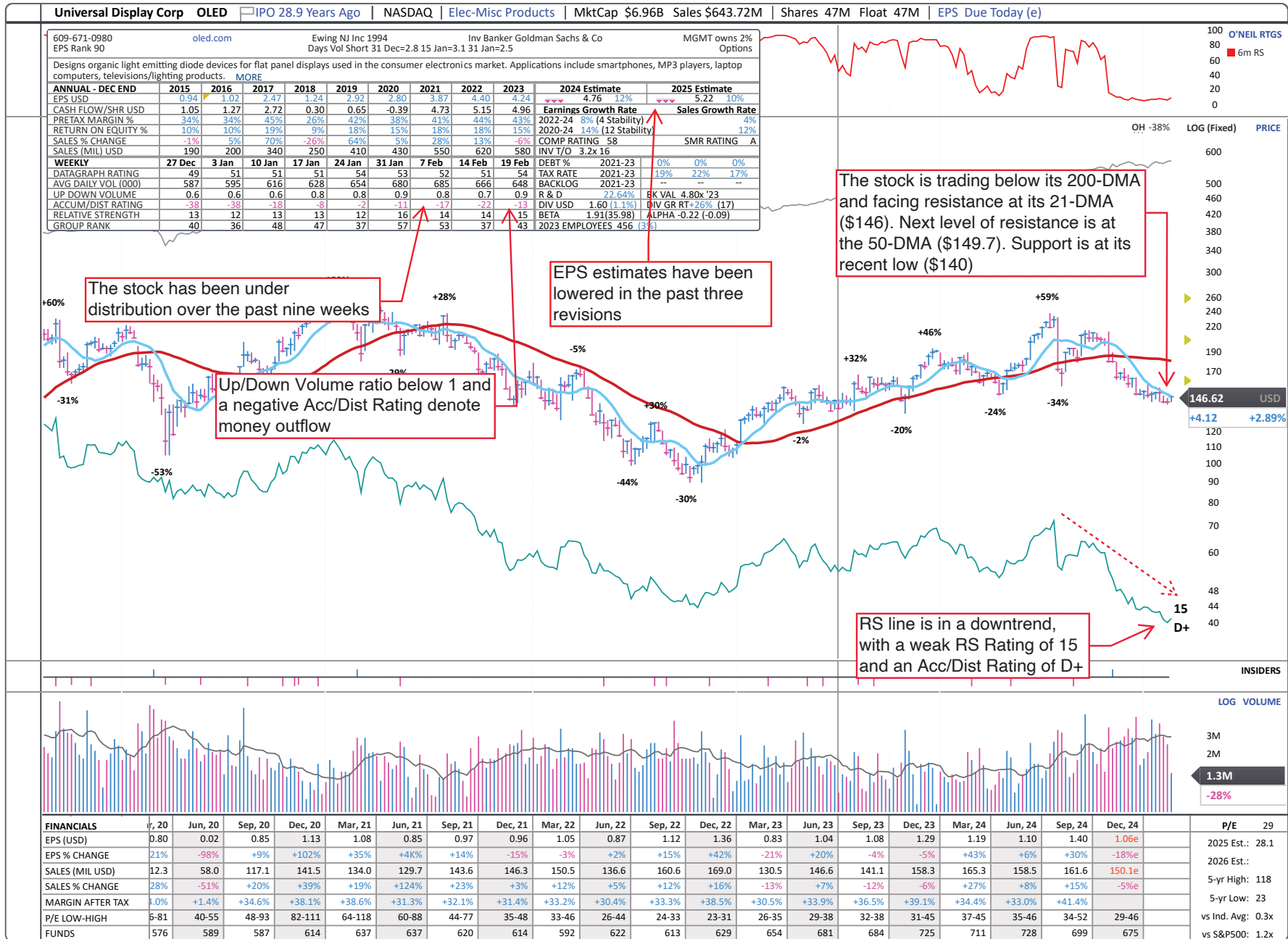
U.S.—Health Care—Highlighted Laggard



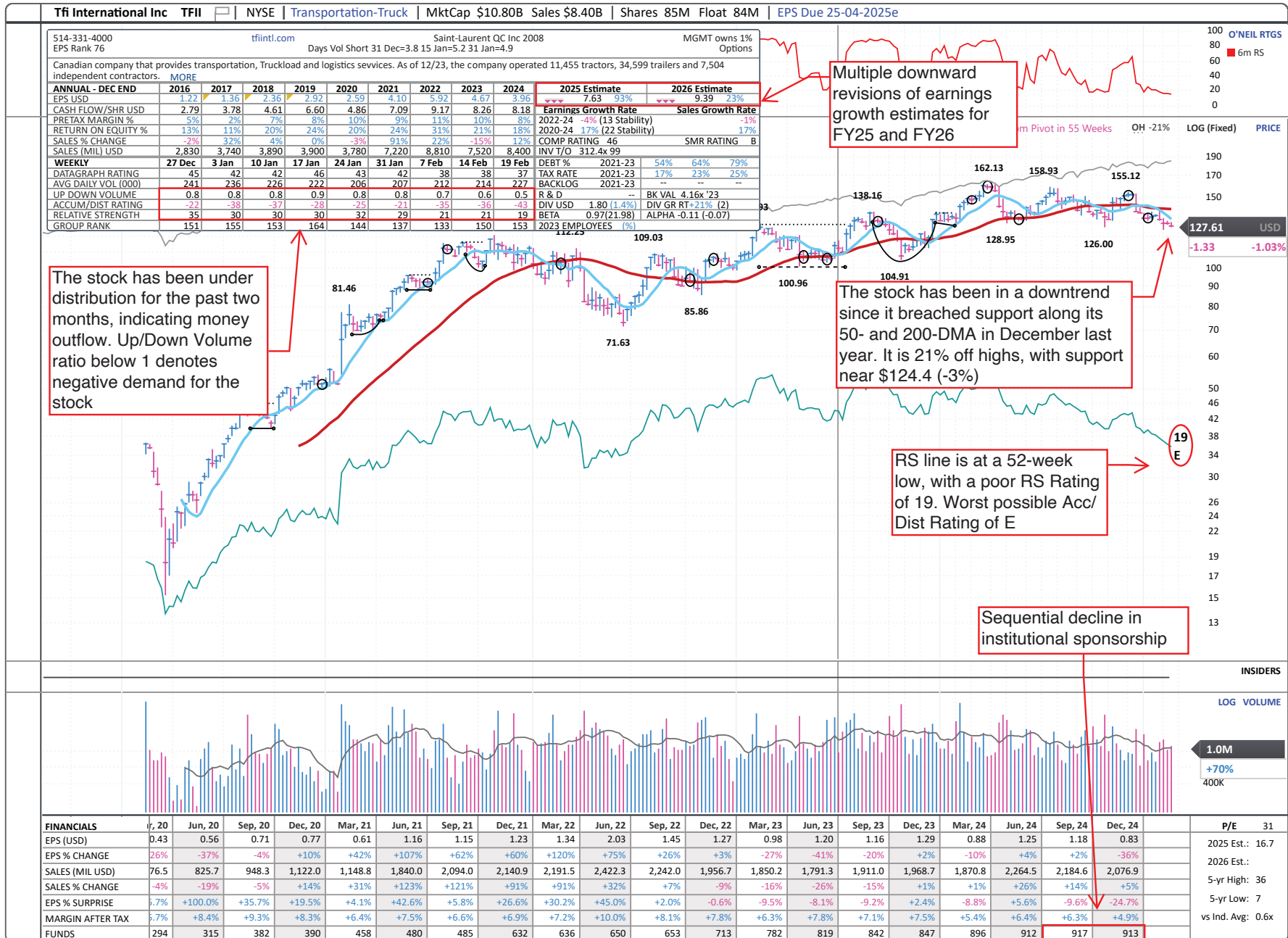
U.S. — Retail — Highlighted Laggard



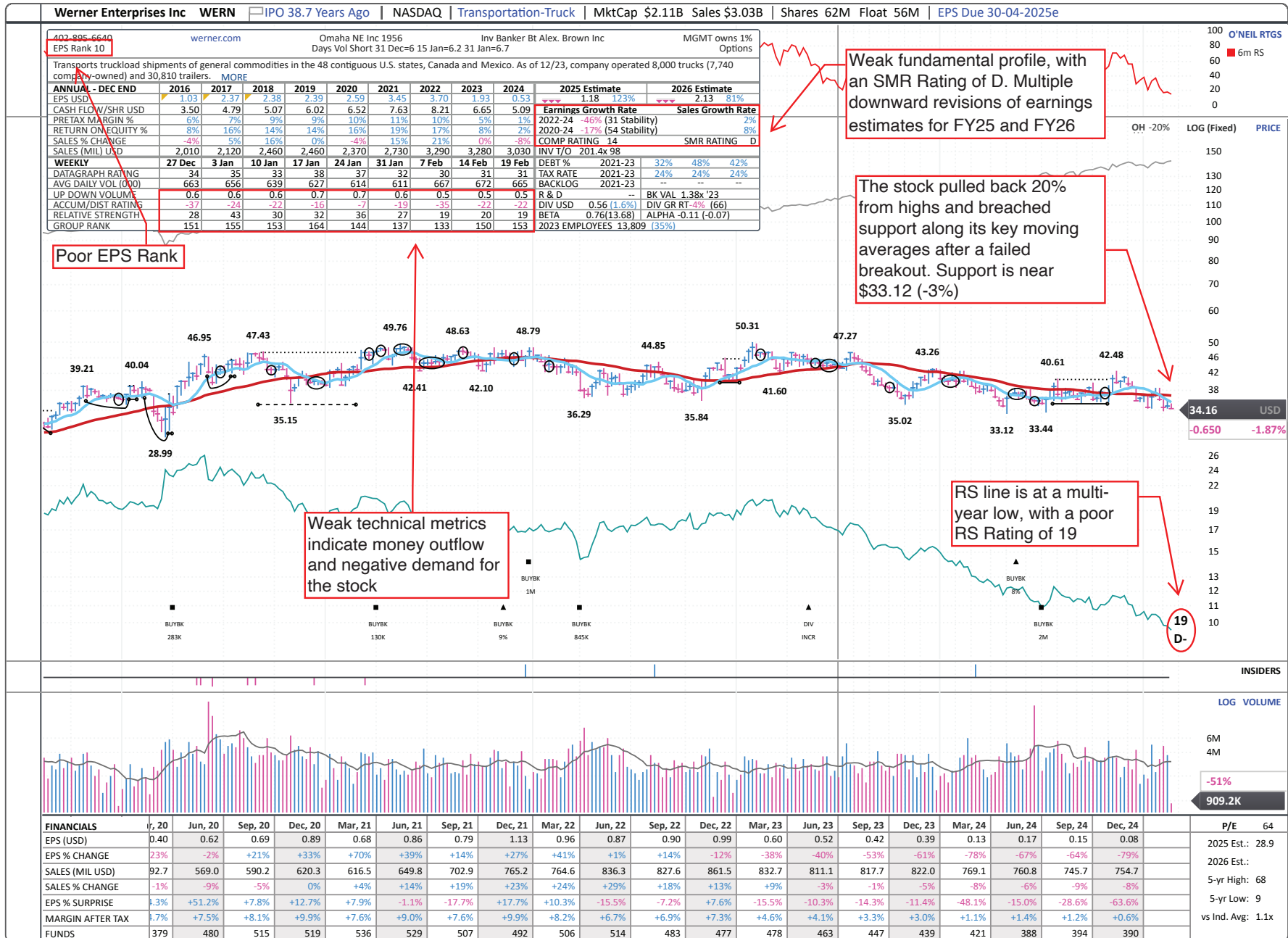
U.S.—Technology—Highlighted Laggard



U.S.—Transportation—Highlighted Laggard



U.S. — Transportation — Highlighted Laggard



## Developed Markets

Symbol	Name	Trading Country	Sector Name	Industry Group Name	Market Value, USD (Mil)	Avg Daily Dollar Vol (000), USD	Negative Alert Score, 10 Wks	EPS Rank	RS Rating	A/D Rating
ORI.AU	Orica	Australia	Basic Material	Chemicals-Specialty	5,251	17,855	5	40	39	D
WOR.AU	Worley	Australia	Capital Equipment	Bldg-Heavy Construction	4,850	13,354	3	82	45	D
FLT.AU	Flight Centre Travel Gp.	Australia	Consumer Cyclical	Leisure-Travel Booking	2,501	8,773	4	30	39	B-
TWE.AU	Treasury Wine Estates	Australia	Consumer Staple	Beverages-Alcoholic	5,547	18,845	4	91	36	C
EDV.AU	Endeavour Group	Australia	Consumer Staple	Beverages-Alcoholic	5,040	13,458	5	53	36	B
AUB.AU	Aub Group	Australia	Financial	Insurance-Brokers	2,095	4,437	6	96	36	D+
PXA.AU	Pexa Group	Australia	Financial	Real Estate Dvlpmt/Ops	1,269	1,594	5	57	31	E
CSL.AU	Csl	Australia	Health Care	Medical-Biomed/Biotech	79,637	1,17,207	4	68	35	D+
RHC.AU	Ramsay Health Care	Australia	Health Care	Medical-Hospitals	5,045	16,412	5	94	20	D-
NXT.AU	Nextdc	Australia	Technology	Internet-Network Sltns	5,810	15,657	4	19	28	D-
AGL.AU	Agl Energy	Australia	Utility	Utility-Diversified	4,569	11,912	4	21	62	D-
ABI.BE	Anheuser-Busch Inbev	Belgium	Consumer Staple	Beverages-Alcoholic	94,817	1,11,848	4	93	32	B
IVN.CA	Ivanhoe Mines	Canada	Basic Material	Mining-Metal Ores	15,028	18,164	6	84	28	D+
CS.CA	Capstone Mining	Canada	Basic Material	Mining-Metal Ores	4,389	13,176	5	92	26	D-
BBD/B.CA	Bombardier 'B'	Canada	Capital Equipment	Aerospace/Defense	5,557	33,379	5	49	70	D-
STN.CA	Stantec	Canada	Capital Equipment	Bldg-Heavy Construction	8,932	16,162	5	79	38	D-
CCL/B.CA	Ccl Inds.'B'	Canada	Capital Equipment	Containers/Packaging	8,213	14,798	6	98	42	E
SAP.CA	Saputo	Canada	Consumer Staple	Food-Dairy Products	7,541	13,595	5	8	32	B
CNQ.CA	Canadian Natural Res.	Canada	Energy	Oil&Gas-Cdn Expl&Prod	64,099	3,01,198	6	94	28	E
MEG.CA	Meg Energy	Canada	Energy	Oil&Gas-Intl Expl&Prod	4,305	34,507	5	85	28	D-
PPL.CA	Pembina Pipeline	Canada	Energy	Oil&Gas-Transprt/Pipeline	21,164	1,07,586	6	97	38	D-
ATD.CA	Alimentation Couche Tard Mtpl.Vtg. Shs.'A'	Canada	Retail	Retail-Super/Mini Mkts	47,800	62,020	3	74	29	D-
OTEX.CA	Open Text (Tse)	Canada	Technology	Computer Sftwr-Enterprse	7,272	21,998	4	96	29	D-
NKT.DK	Nkt	Denmark	Capital Equipment	Electrical-Power/Equipmt	3,777	11,235	6	53	28	D-
ROC.DK	Rockwool B	Denmark	Consumer Cyclical	Bldg-Constr Prds/Misc	4,580	13,437	4	88	55	C
ZEA.DK	Zealand Pharma	Denmark	Health Care	Medical-Biomed/Biotech	7,669	19,815	4	11	86	B-
NON.DK	Novo Nordisk 'B'	Denmark	Health Care	Medical-Diversified	2,83,698	3,71,769	4	93	12	C
COL.DK	Coloplast B	Denmark	Health Care	Medical-Supplies	23,434	21,959	5	37	33	E
WDH.DK	Demant	Denmark	Health Care	Medical-Systems/Equip	8,311	10,137	3	87	36	D-
ELIS.FI	Elisa	Finland	Technology	Telecom Svcs-Integrated	7,409	11,590	5	63	35	C
MCL.FR	Michelin	France	Consumer Cyclical	Auto/Truck-Tires & Misc	24,773	55,345	4	63	39	C
SDX.FR	Sodexo	France	Consumer Cyclical	Leisure-Services	11,115	16,692	5	30	16	D-
OR@F.FR	L'Oreal	France	Consumer Staple	Cosmetics/Personal Care	1,86,412	1,57,958	4	82	18	D+
VIE.FR	Veolia Environ	France	Utility	Utility-Water Supply	21,054	53,581	4	92	21	C-

Symbol	Name	Trading Country	Sector Name	Industry Group Name	Market Value, USD (Mil)	Avg Daily Dollar Vol (000), USD	Negative Alert Score, 10 Wks	EPS Rank	RS Rating	A/D Rating
TUIX.DE	Tui (Xet)	Germany	Consumer Cyclical	Leisure-Lodging	3,499	29,771	4	31	42	E
EVDX.DE	Cts Eventim (Xet)	Germany	Consumer Cyclical	Leisure-Services	10,410	12,168	4	84	82	B+
GYCX.DE	Grand City Props. (Xet)	Germany	Financial	Real Estate Dvlpmt/Ops	1,955	1,736	6	70	31	D+
DHLX.DE	Deutsche Post (Xet)	Germany	Transportation	Transport-Air Freight	45,595	97,292	5	51	31	D-
RWEX.DE	Rwe (Xet)	Germany	Utility	Utility-Diversified	22,132	75,361	6	90	20	E
ANIT.HK	Anta Sports Products	Hong Kong	Consumer Cyclical	Apparel-Shoes & Rel Mfg	29,879	96,312	3	99	61	C+
HASH.HK	Haier Smart Home	Hong Kong	Consumer Cyclical	Hsehold-Appliances/Wares	9,262	42,898	5	92	44	D-
PIPE.HK	Galaxy Entertainment Gp.	Hong Kong	Consumer Cyclical	Leisure-Gaming/Equip	16,797	41,458	6	77	22	D-
SNDC.HK	Sands China	Hong Kong	Consumer Cyclical	Leisure-Gaming/Equip	18,217	42,640	5	88	32	C-
YADE.HK	Yadea Group Hdg.	Hong Kong	Consumer Cyclical	Leisure-Products	5,060	21,044	3	92	64	C+
TSIN.HK	Tsingtao Brewery 'H'	Hong Kong	Consumer Staple	Beverages-Alcoholic	4,255	26,004	5	93	55	B-
SWPA.HK	Swire Pacific 'A'	Hong Kong	Consumer Staple	Beverages-Non-Alcoholic	6,543	10,560	4	39	46	D
CCEC.HK	China Coal Energy 'H'	Hong Kong	Energy	Energy-Coal	4,305	18,136	5	92	32	E
CHPE.HK	China Ptl.& Chm. 'H'	Hong Kong	Energy	Oil&Gas-Integrated	13,085	64,654	6	70	36	E
CNOO.HK	Cnooc	Hong Kong	Energy	Oil&Gas-Intl Expl&Prod	1,06,671	1,94,358	6	96	63	E
SBIO.HK	Sino Biophm.	Hong Kong	Health Care	Medical-Diversified	7,952	25,822	5	75	56	A-
BOSI.HK	Bosideng Intl.Holdings	Hong Kong	Retail	Retail-Apparel/Shoes/Acc	5,800	19,018	5	99	39	D
MTRC.HK	Mtr	Hong Kong	Transportation	Transportation-Rail	19,976	12,677	6	95	32	D
SIH.HK	Sitc International Hdg.	Hong Kong	Transportation	Transportation-Ship	6,021	11,168	6	95	46	E
CLIG.HK	Clp Holdings	Hong Kong	Utility	Utility-Electric Power	20,895	21,487	6	72	46	C
LOGI.HK	China Resources Gas Gp.	Hong Kong	Utility	Utility-Gas Distribution	7,932	13,307	5	67	49	D-
KRX.IE	Kingspan Group	Ireland	Consumer Cyclical	Bldg-Constr Prds/Misc	12,794	26,378	4	93	11	D-
TEVA.IL	Teva Pharmaceutical Industries	Israel	Health Care	Medical-Diversified	19,279	23,333	4	7	18	C-
TIPS.IT	Tamburi Inv.Partners	Italy	Financial	Finance-Invest Bnk/Bkrs	1,605	1,285	3	63	30	C
IP@N.JP	Kansai Paint	Japan	Basic Material	Chemicals-Paints	2,699	12,075	4	92	43	D+
SW@N.JP	Showa Denko Kk	Japan	Basic Material	Chemicals-Specialty	4,272	25,417	4	37	35	D-
RK@N.JP	Kuraray	Japan	Basic Material	Chemicals-Specialty	3,989	20,700	5	58	60	C
AC@N.JP	Asahi Kasei	Japan	Basic Material	Chemicals-Specialty	9,194	24,305	6	45	32	D
MG@N.JP	Mitsui Mng.& Smelt.	Japan	Basic Material	Mining-Metal Ores	1,628	13,370	6	68	23	E
DP@N.JP	Dai Nippon Printing	Japan	Capital Equipment	Comm Svc-Document Mgmt	7,805	24,011	8	95	20	D-
MRBU.JP	Marubeni	Japan	Capital Equipment	Diversified Operations	24,716	62,518	3	84	17	D+
NIIW.JP	Sojitz	Japan	Capital Equipment	Diversified Operations	4,802	25,780	4	76	29	C-
LM@N.JP	Mitsubishi Materials	Japan	Capital Equipment	Diversified Operations	2,025	14,115	4	30	18	E
UM@N.JP	Mitsubishi Electric	Japan	Capital Equipment	Diversified Operations	32,853	74,627	5	86	29	D-
ITCN.JP	Itochu	Japan	Capital Equipment	Diversified Operations	63,621	1,11,929	7	85	10	E
KEYE.JP	Keyence	Japan	Capital Equipment	Machinery-Mtl Hdlg/Autmn	1,00,412	2,33,080	4	83	20	D-
JORT.JP	Organo	Japan	Capital Equipment	Pollution Control	2,216	14,321	6	95	29	C

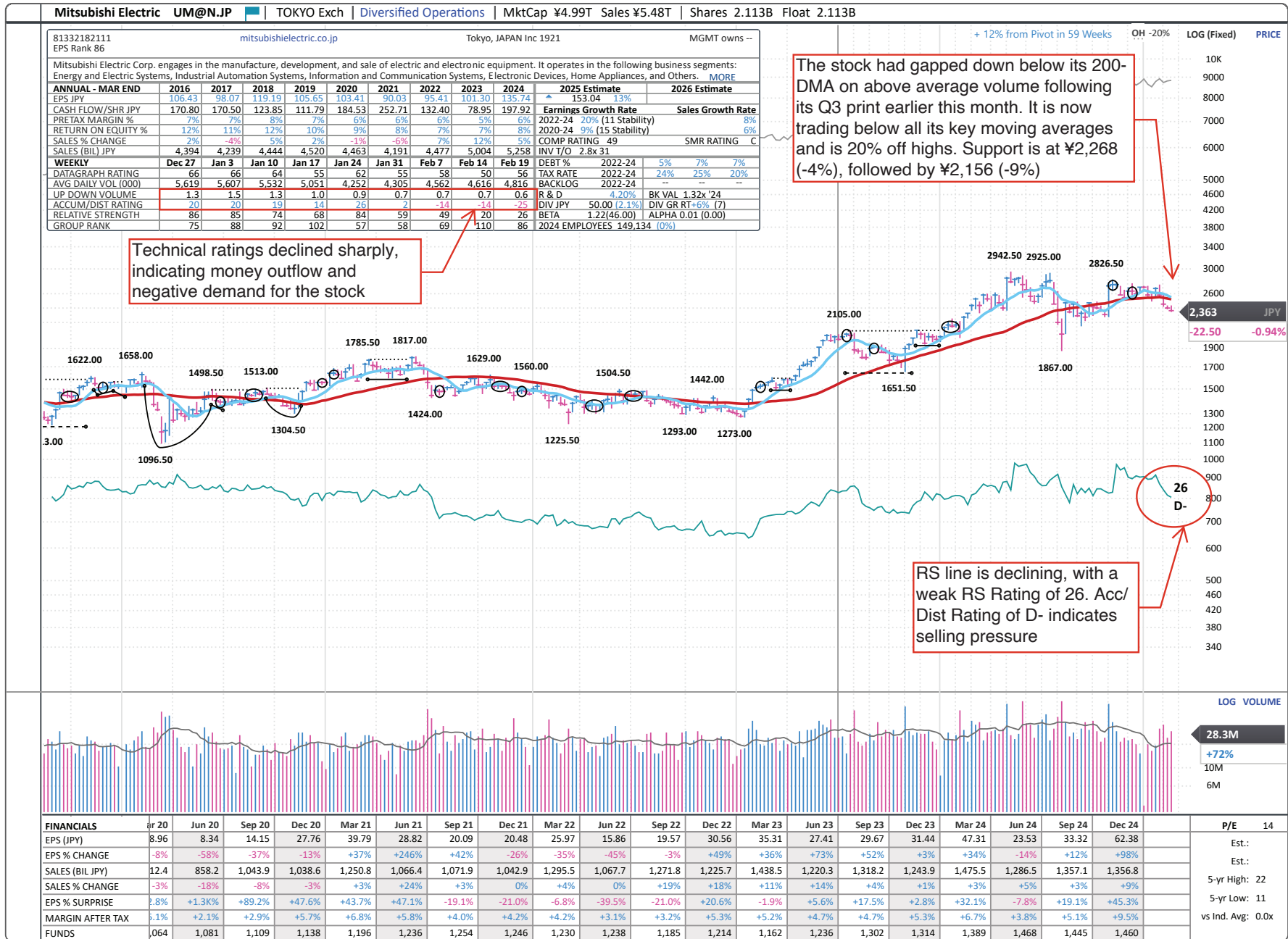
Symbol	Name	Trading Country	Sector Name	Industry Group Name	Market Value, USD (Mil)	Avg Daily Dollar Vol (000), USD	Negative Alert Score, 10 Wks	EPS Rank	RS Rating	A/D Rating
GT@N.JP	Kurita Water Ind.	Japan	Capital Equipment	Pollution Control	3,780	15,139	4	74	7	D
VA@N.JP	Nitto Boseki	Japan	Consumer Cyclical	Apparel-Clothing Mfg	1,232	14,506	4	37	10	D-
IM@N.JP	Isuzu Motors	Japan	Consumer Cyclical	Auto Manufacturers	9,730	26,548	4	42	35	C-
STAN.JP	Stanley Electric	Japan	Consumer Cyclical	Auto/Truck-Original Eqp	2,722	9,915	4	73	25	D+
KS@N.JP	Ngk Spark Plug	Japan	Consumer Cyclical	Auto/Truck-Original Eqp	5,865	17,195	4	84	39	D
PF@N.JP	Koito Manufacturing	Japan	Consumer Cyclical	Auto/Truck-Original Eqp	3,834	12,381	3	38	29	D
SE@N.JP	Sekisui House	Japan	Consumer Cyclical	Bldg-Resident/Comml	14,624	50,703	6	72	35	E
OU@N.JP	Nikon	Japan	Consumer Cyclical	Consumer Prod-Electronic	3,561	17,758	5	9	20	D
YM@N.JP	Yamaha Motor	Japan	Consumer Cyclical	Leisure-Products	8,116	34,875	5	35	15	C-
JRCE.JP	Central Japan Railway	Japan	Consumer Cyclical	Leisure-Services	19,539	42,520	5	34	12	D+
WJR.JP	West Japan Railway	Japan	Consumer Cyclical	Leisure-Services	9,083	26,723	4	22	56	B
HNKU.JP	Hankyu Hanshin Hdq.	Japan	Consumer Cyclical	Leisure-Services	6,048	11,674	5	77	15	E
JR@N.JP	Tokyu	Japan	Consumer Cyclical	Leisure-Services	6,906	18,104	4	94	23	D
ASBR.JP	Asahi Group Holdings	Japan	Consumer Staple	Beverages-Alcoholic	17,855	58,586	4	78	60	B+
KB@N.JP	Kirin Holdings	Japan	Consumer Staple	Beverages-Alcoholic	12,031	33,299	5	16	25	C+
SBFL.JP	Suntory Beverage & Food	Japan	Consumer Staple	Beverages-Non-Alcoholic	9,374	17,375	6	56	15	D-
XP@N.JP	Rohto Pharmaceutical	Japan	Consumer Staple	Cosmetics/Personal Care	3,545	13,871	5	75	5	E
KA@N.JP	Kao	Japan	Consumer Staple	Cosmetics/Personal Care	19,765	52,194	7	76	63	B+
TOSU.JP	Toyo Suisan Kaisha	Japan	Consumer Staple	Food-Meat Products	6,679	28,766	6	89	20	D+
YAHU.JP	Yakult Honsha	Japan	Consumer Staple	Food-Misc Preparation	6,573	23,508	5	55	39	B-
RZ@N.JP	Nichirei	Japan	Consumer Staple	Food-Misc Preparation	2,961	12,427	7	45	17	E
FY@N.JP	Nh Foods	Japan	Consumer Staple	Food-Misc Preparation	3,042	12,879	6	40	13	E
MEJH.JP	Meiji Holdings	Japan	Consumer Staple	Food-Misc Preparation	5,440	29,535	6	32	12	E
KN@N.JP	Kikkoman	Japan	Consumer Staple	Food-Misc Preparation	9,101	20,406	5	73	7	E
KEWP.JP	Kewpie	Japan	Consumer Staple	Food-Misc Preparation	2,608	9,747	7	40	11	E
NIFP.JP	Nissin Foods Holdings	Japan	Consumer Staple	Food-Packaged	5,797	25,055	7	49	3	E
ABOT.JP	Japan Tobacco	Japan	Consumer Staple	Tobacco	48,836	1,07,295	8	42	17	E
INPX.JP	Inpex	Japan	Energy	Oil&Gas-Intl Expl&Prod	15,745	83,766	4	97	20	D-
COEN.JP	Cosmo Energy Holdings	Japan	Energy	Oil&Gas-Refining/Mktg	3,902	15,168	6	26	39	D-
IDKO.JP	Idemitsu Kosan	Japan	Energy	Oil&Gas-Refining/Mktg	9,410	23,261	6	13	60	D-
GMOP.JP	Gmo Payment Gtwy.	Japan	Financial	Finance-CrdtCard/PmtPr	4,027	14,495	3	94	48	C
OSEX.JP	Japan Exchange Group	Japan	Financial	Financial Svcs-Specialty	10,840	23,266	4	60	12	D-
AMCL.JP	Ichigo	Japan	Financial	Real Estate Dvlpmt/Ops	1,040	2,297	3	90	23	D+
ME@N.JP	Mitsubishi Estate	Japan	Financial	Real Estate Dvlpmt/Ops	17,752	50,582	3	78	35	D
JTER.JP	Japan Airport Term.	Japan	Financial	Real Estate Dvlpmt/Ops	2,817	9,295	4	38	10	D
AEMA.JP	Aeon Mall	Japan	Financial	Real Estate Dvlpmt/Ops	2,876	8,825	5	20	48	E
D@SA.JP	Daiichi Sankyo	Japan	Health Care	Medical-Diversified	42,883	1,14,634	5	70	2	E



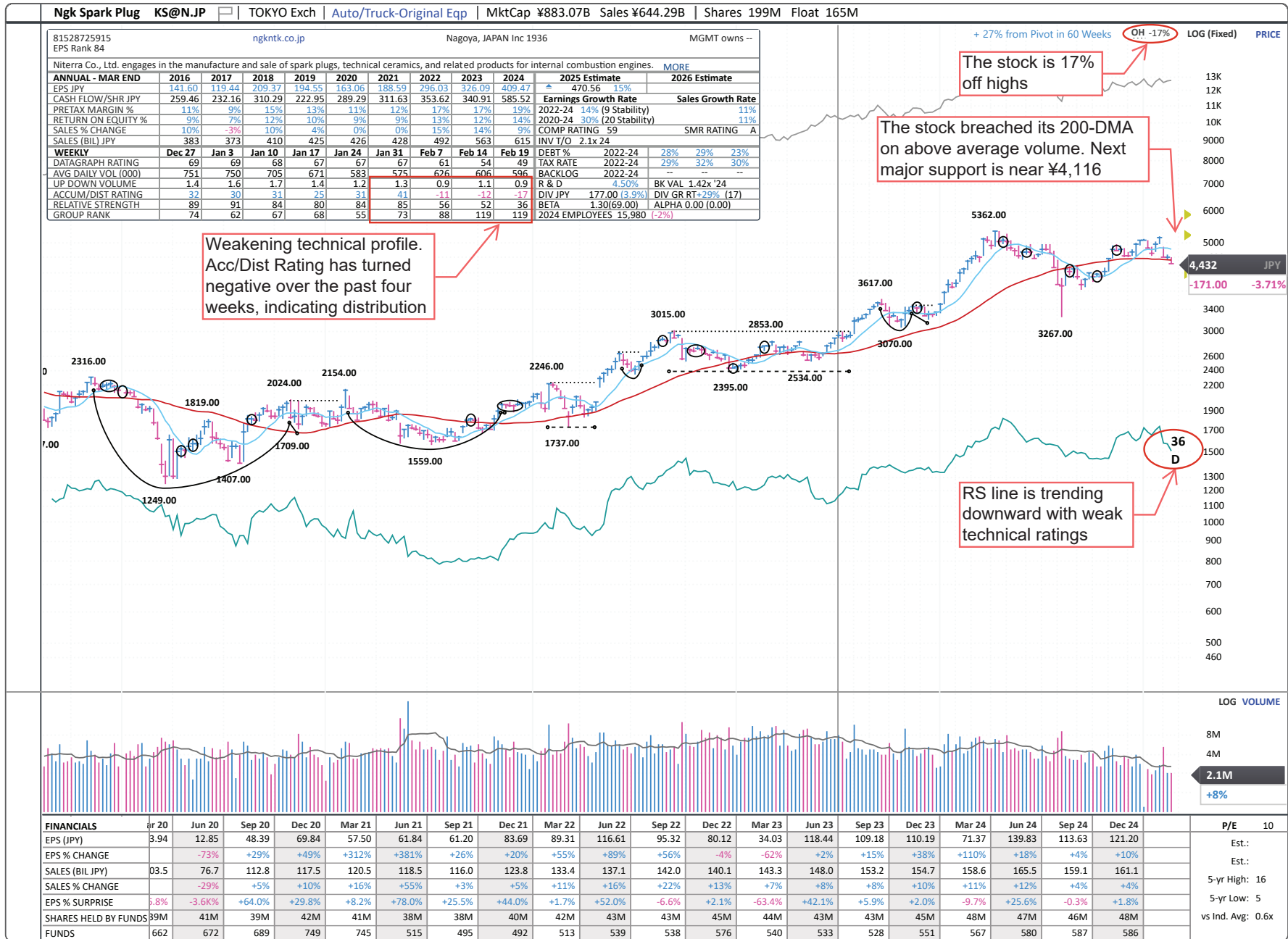
Symbol	Name	Trading Country	Sector Name	Industry Group Name	Market Value, USD (Mil)	Avg Daily Dollar Vol (000), USD	Negative Alert Score, 10 Wks	EPS Rank	RS Rating	A/D Rating
XY@N.JP	Santen Pharm.	Japan	Health Care	Medical-Diversified	3,212	13,133	7	27	12	D-
YP@N.JP	Astellas Pharma	Japan	Health Care	Medical-Diversified	17,298	55,011	5	17	17	D+
KH@N.JP	Kyowa Hakko Kirin	Japan	Health Care	Medical-Ethical Drugs	7,043	12,354	5	22	3	E
ZU@N.JP	Shimadzu	Japan	Health Care	Medical-Supplies	7,582	15,245	6	68	20	D-
MCJP.JP	Mcdonald's	Japan	Retail	Retail-Restaurants	5,080	26,971	4	83	18	E
FP@N.JP	Fujifilm Holdings	Japan	Technology	Computer-Hardware/Perip	24,737	64,598	4	70	20	D
SEEP.JP	Seiko Epson	Japan	Technology	Computer-Hardware/Perip	6,200	18,534	4	72	35	D+
VISI.JP	Visional Inc	Japan	Technology	Computer-Tech Services	1,957	10,239	3	81	20	C-
MCRU.JP	Maruwa	Japan	Technology	Elec-Misc Products	3,012	28,572	6	91	35	D
HQ@N.JP	Hoya	Japan	Technology	Elec-Semiconductor Equip	41,396	1,02,289	4	87	29	E
TD@N.JP	Tdk	Japan	Technology	Electronic-Parts	21,611	82,479	5	71	39	D-
NTT.JP	Nippon Telg. & Tel.	Japan	Technology	Telecom Svcs-Integrated	86,942	1,39,360	4	52	23	E
SGHS.JP	Sg Holdings Co	Japan	Transportation	Transport-Air Freight	6,062	11,283	4	45	20	C-
ANAW.JP	Ana Holdings	Japan	Transportation	Transportation-Airline	9,241	28,748	3	15	43	D+
KRWC.JP	Kyushu Railway	Japan	Transportation	Transportation-Rail	3,703	11,618	4	88	39	D-
CL@N.JP	Chubu Elec.Power	Japan	Utility	Utility-Electric Power	7,854	22,690	5	7	15	E
HBA.NL	Heineken Holding	Netherlands	Consumer Staple	Beverages-Alcoholic	20,567	16,248	3	26	36	B+
DSFR.NL	Dsm Firmenich	Netherlands	Consumer Staple	Cosmetics/Personal Care	28,255	45,587	6	63	12	B+
KPN.NL	Kpn Kon	Netherlands	Technology	Telecom Svcs-Integrated	14,212	25,646	5	58	25	D
GES.PT	Galp Energia Sgps B	Portugal	Energy	Oil&Gas-Refining/Mktg	11,196	17,748	5	67	25	D-
GINT.SG	Genting Singapore Ltd	Singapore	Consumer Cyclical	Leisure-Gaming/Equip	6,984	13,007	4	83	22	C+
CITY.SG	City Developments	Singapore	Financial	Real Estate Dvlpmt/Ops	3,408	3,844	3	59	22	C-
UL@V.SG	Uol Group	Singapore	Financial	Real Estate Dvlpmt/Ops	3,223	3,137	3	59	22	C-
PROB.ES	Grifols Ord Cl A	Spain	Health Care	Medical-Biomed/Biotech	4,216	16,956	4	26	23	B-
TEF.ES	Telefonica	Spain	Technology	Telecom Svcs- Foreign	24,240	42,425	6	19	44	D
ALF.SE	Alfa Laval	Sweden	Capital Equipment	Machinery-Gen Industrial	17,884	24,724	5	93	57	E
ACBF.SE	Atlas Copco B	Sweden	Capital Equipment	Machinery-Gen Industrial	23,497	22,899	6	91	57	C
SE@G.SE	Electrolux B	Sweden	Consumer Cyclical	Hsehold-Appliances/Wares	2,466	16,427	3	41	65	C-
ESSI.SE	Essity B	Sweden	Consumer Staple	Cosmetics/Personal Care	17,036	39,453	6	81	53	C+
LBNF.SE	Lundbergforetagen B	Sweden	Financial	Finance-Investment Mgmt	7,514	7,399	3	60	47	C-
HUA.SE	Hufvudstaden A	Sweden	Financial	Real Estate Dvlpmt/Ops	2,302	2,300	3	86	46	D
CATE.SE	Catena	Sweden	Financial	Real Estate Dvlpmt/Ops	2,612	3,767	4	18	44	D+
ATRJ.SE	Atrium Ljungberg B	Sweden	Financial	Real Estate Dvlpmt/Ops	2,143	1,435	6	41	31	D-
CAST.SE	Castellum	Sweden	Financial	Real Estate Dvlpmt/Ops	5,438	16,014	4	43	39	E
FABG.SE	Fabege	Sweden	Financial	Real Estate Dvlpmt/Ops	2,578	5,549	3	86	46	D+
HMBF.SE	Hennes & Mauritz B	Sweden	Retail	Retail-Apparel/Shoes/Acc	18,776	37,464	6	69	35	E
GEBN.CH	Geberit 'R'	Switzerland	Consumer Cyclical	Bldg-Constr Prds/Misc	20,358	44,348	5	42	14	C+

Symbol	Name	Trading Country	Sector Name	Industry Group Name	Market Value, USD (Mil)	Avg Daily Dollar Vol (000), USD	Negative Alert Score, 10 Wks	EPS Rank	RS Rating	A/D Rating
LISN.CH	Chocoladefabriken Lindt & Spruengli	Switzerland	Consumer Staple	Food-Confectionery	15,398	10,168	4	82	14	E
LISP.CH	Choc.Lindt & Spruengli Par	Switzerland	Consumer Staple	Food-Confectionery	11,705	26,913	4	82	29	D-
NESN.CH	Nestle 'N'	Switzerland	Consumer Staple	Food-Misc Preparation	2,39,289	3,70,381	5	32	9	B
SCMN.CH	Swisscom 'R'	Switzerland	Technology	Telecom Svcs-Integrated	28,444	50,017	5	29	10	E
AAL.GB	Anglo American	United Kingdom	Basic Material	Mining-Metal Ores	39,915	97,336	5	14	59	C+
WPP.GB	Wpp	United Kingdom	Capital Equipment	Comml Svcs-Advertising	10,400	26,547	7	68	25	E
BTRW.GB	Barratt Redrow	United Kingdom	Consumer Cyclical	Bldg-Resident/Comml	7,781	25,508	4	28	18	C-
HWDN.GB	Howden Joinery Gp.	United Kingdom	Consumer Cyclical	Hsehold-Appliances/Wares	5,700	13,262	4	64	25	C
WTB.GB	Whitbread	United Kingdom	Consumer Cyclical	Leisure-Lodging	5,811	28,774	5	26	13	E
DGE.GB	Diageo	United Kingdom	Consumer Staple	Beverages-Alcoholic	59,216	1,06,493	6	54	10	E
ULVR.GB	Unilever (UK)	United Kingdom	Consumer Staple	Cosmetics/Personal Care	1,39,760	1,77,883	4	43	35	D
DCC.GB	Dcc	United Kingdom	Energy	Oil&Gas-Refining/Mktg	6,685	18,670	5	83	21	D
CBKD.GB	Coml.Intl.Bank Gdr (Lon)	United Kingdom	Financial	Banks-Money Center	4,583	1,487	4	99	40	C-
AXB.GB	Axis Bank Gdr	United Kingdom	Financial	Banks-Money Center	36,041	3,415	8	93	12	C
SBID.GB	State Bk.Of India Gdr (Reg S) (Lon)	United Kingdom	Financial	Banks-Money Center	74,521	1,202	5	99	13	D-
HSX.GB	Hiscox (Di)	United Kingdom	Financial	Insurance-Prop/Cas/Titl	4,448	10,305	3	92	21	D-
LRE.GB	Lancashire Holdings	United Kingdom	Financial	Insurance-Prop/Cas/Titl	1,791	4,439	4	60	18	C
SRE.GB	Sirius Real Estate	United Kingdom	Financial	Real Estate Dvlpmt/Ops	1,482	4,049	3	67	13	C
SHC.GB	Shaftesbury Capital	United Kingdom	Financial	Real Estate Dvlpmt/Ops	3,059	4,954	5	15	16	C
SBRY.GB	Sainsbury (J)	United Kingdom	Retail	Retail-Super/Mini Mkts	7,334	19,529	3	30	20	D
FERG.GB	Ferguson Enterprises	United Kingdom	Retail	Retail/Whlsle-Bldg Prds	36,203	15,585	5	63	14	D-
AUTO.GB	Auto Trader Group	United Kingdom	Technology	Internet-Content	8,550	25,972	5	94	29	D+
EZJ.GB	Easyjet	United Kingdom	Transportation	Transportation-Airline	4,746	30,256	5	47	35	D+
SSE.GB	Sse	United Kingdom	Utility	Utility-Electric Power	20,572	66,464	7	67	12	E
SVT.GB	Severn Trent	United Kingdom	Utility	Utility-Water Supply	9,235	20,459	5	84	18	E
UU.GB	United Utilities Group	United Kingdom	Utility	Utility-Water Supply	8,370	18,718	4	27	16	C

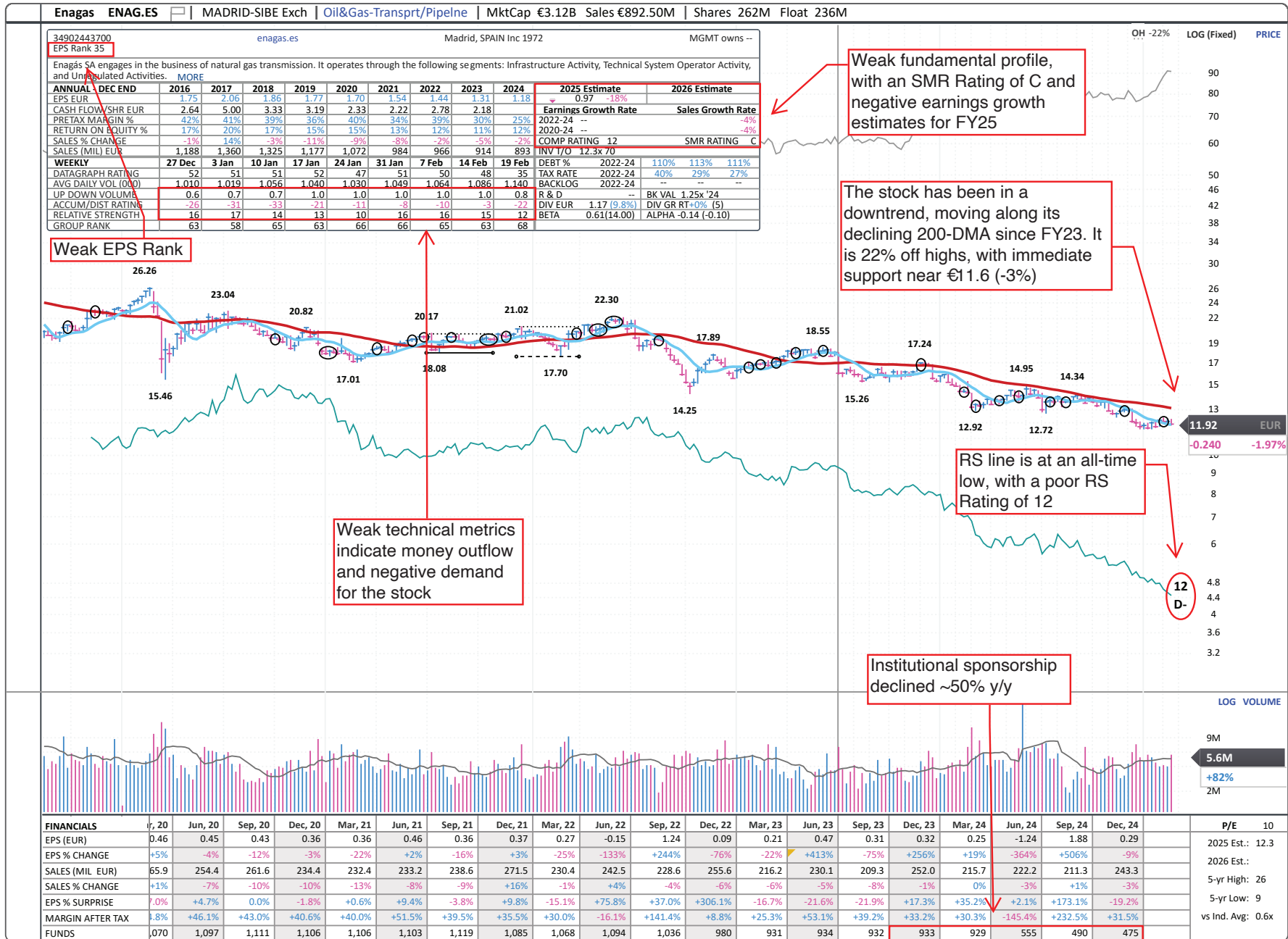
Developed — Capital Equipment — Highlighted Laggard



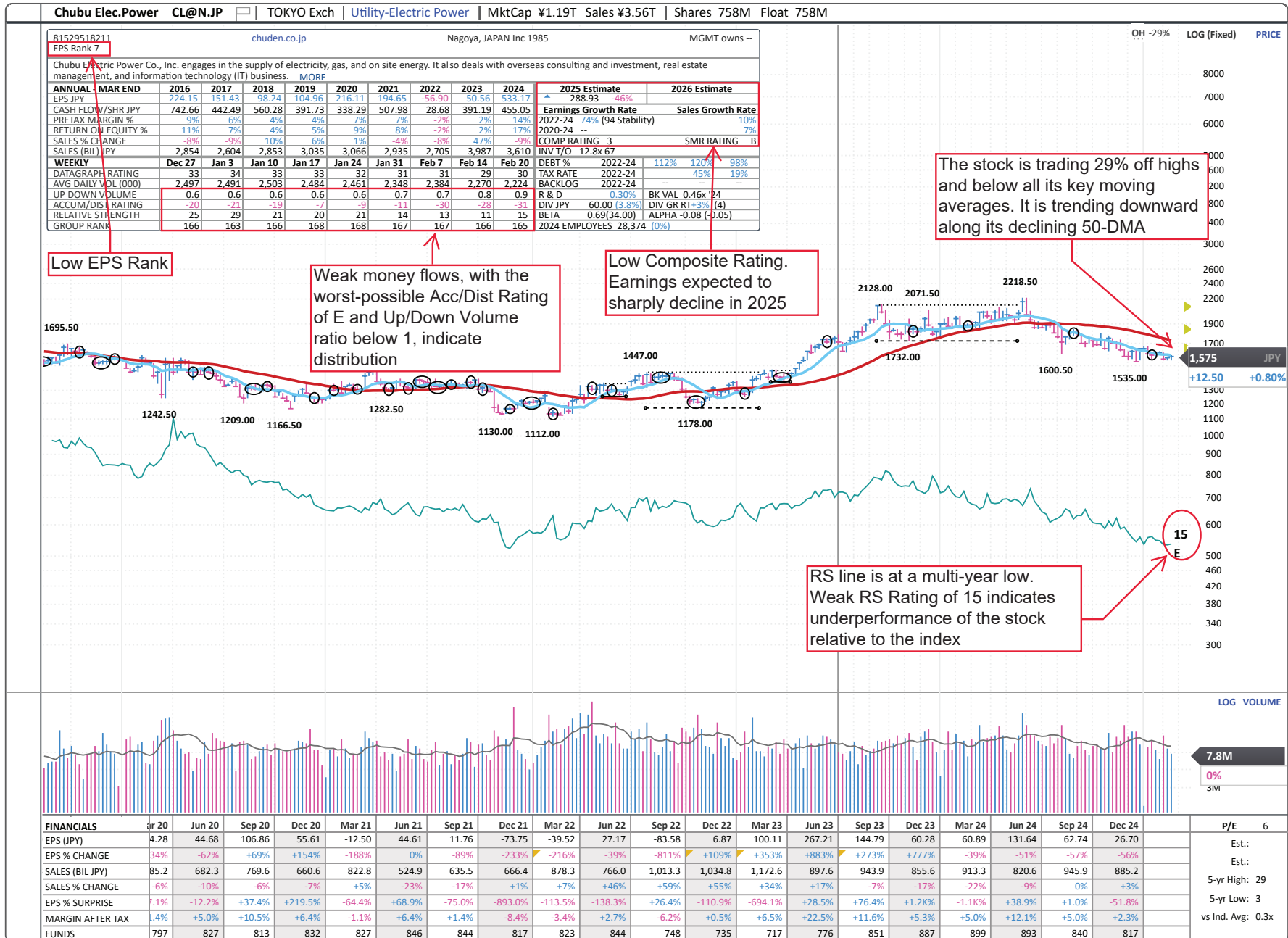
Developed — Consumer Cyclical — Highlighted Laggard



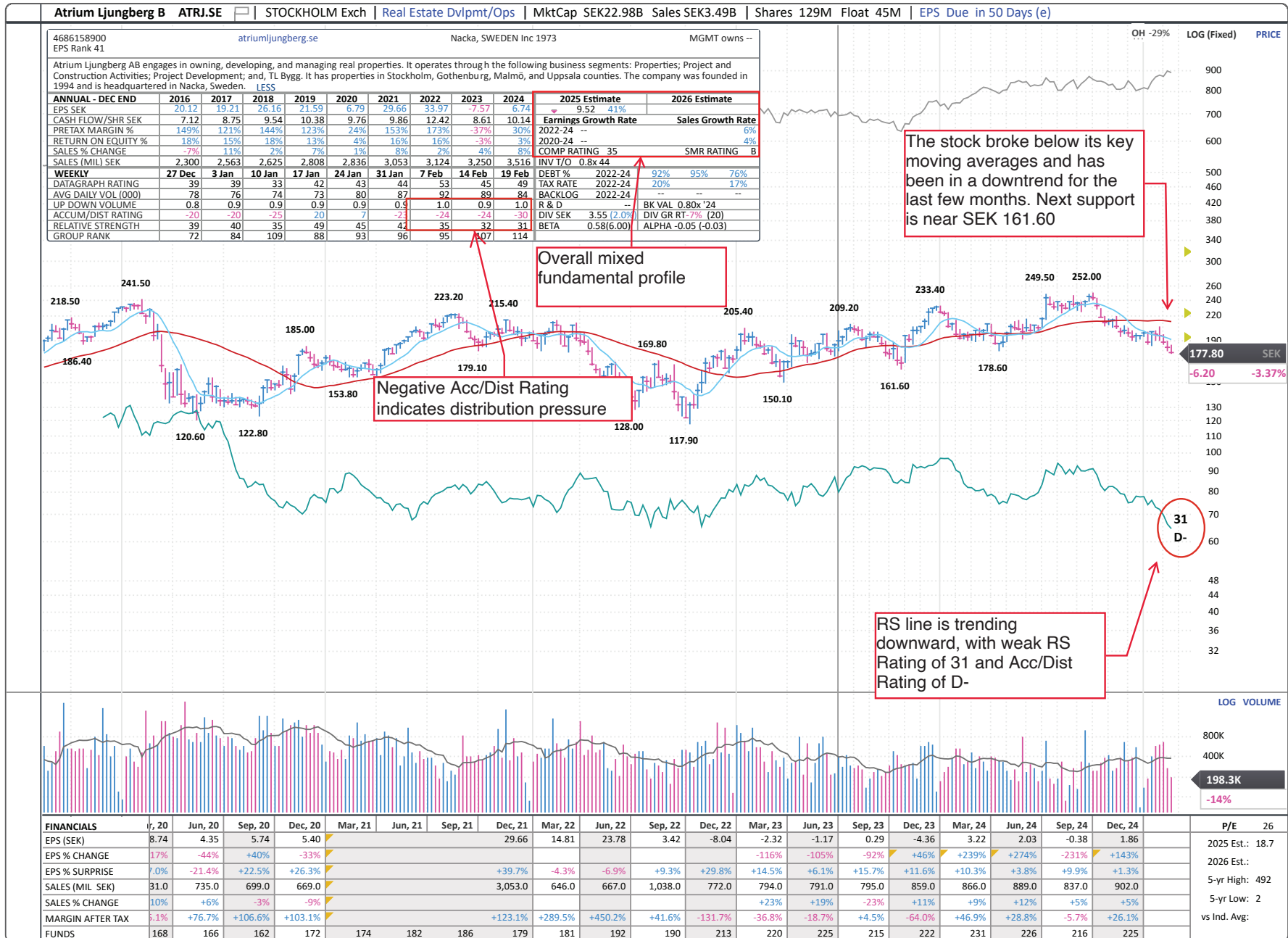
Developed — Energy — Highlighted Laggard



Developed — Energy — Highlighted Laggard



Developed — Financial — Highlighted Laggard



## Emerging Markets

Symbol	Name	Trading Country	Sector Name	Industry Group Name	Market Value, USD (Mil)	Avg Daily Dollar Vol (000), USD	Negative Alert Score, 10 Wks	EPS Rank	RS Rating	A/D Rating
GO4.BR	Metalurgica Gerdau Pn	Brazil	Basic Material	Steel-Producers	1,091	14,584	7	58	30	C
AVS.BR	Ambev On	Brazil	Consumer Staple	Beverages-Alcoholic	30,381	69,326	6	55	26	D
DG3.BR	Brf Brasil Foods On	Brazil	Consumer Staple	Food-Packaged	5,627	27,265	5	63	37	C-
HRT.BR	Petro Rio On	Brazil	Energy	Oil&Gas-Intl Expl&Prod	6,146	60,505	4	86	30	C
DC4.BR	Banco Bradesco Pn	Brazil	Financial	Banks-Money Center	11,134	89,525	4	80	22	C-
KRI.BR	Kinea Renda Imobiliaria Fii	Brazil	Financial	Finance-Investment Mgmt	6,904	1,015	4		30	C-
HAP.BR	Hapvida Partp.E Invms.On	Brazil	Health Care	Medical-Hospitals	3,220	40,852	5	13	5	B-
KONS.GR	Lamda Development	Greece	Financial	Real Estate Dvlpmt/Ops	1,278	1,345	7	23	33	D
PID.IN	Pidilite Industries(Nse)	India	Basic Material	Chemicals-Specialty	16,218	10,671	6	72	56	C
BHE.IN	Bharat Electronics	India	Capital Equipment	Aerospace/Defense	21,331	52,652	5	90	63	D+
LST.IN	Larsen & Toubro	India	Capital Equipment	Bldg-Heavy Construction	51,878	73,995	4	52	56	D-
ZB1.IN	Bls International Ser.	India	Capital Equipment	Comml Svcs-Outsourcing	1,836	22,266	3	97	71	C-
POI.IN	Polycab India	India	Capital Equipment	Electrical-Power/Equipmt	9,701	24,299	6	76	53	D+
EIK.IN	Kei Industries	India	Capital Equipment	Electrical-Power/Equipmt	3,927	13,291	6	77	53	D+
PI1.IN	Page Industries	India	Consumer Cyclical	Apparel-Clothing Mfg	5,335	15,707	4	86	70	D-
MAM.IN	Mahindra & Mahindra	India	Consumer Cyclical	Auto Manufacturers	38,079	87,226	2	92	77	D+
VLT.IN	Voltas (Nse)	India	Consumer Cyclical	Hsehold-Appliances/Wares	4,893	22,616	8	72	48	C-
HER.IN	Hero Motocorp	India	Consumer Cyclical	Leisure-Products	8,935	27,357	5	50	32	D
TVS.IN	T V S Motor	India	Consumer Cyclical	Leisure-Products	13,022	20,938	5	90	69	B+
IR1.IN	Indian Railway Catering And Tourism Corp	India	Consumer Cyclical	Leisure-Travel Booking	6,710	11,061	4	78	34	B-
MLC.IN	United Spirits	India	Consumer Staple	Beverages-Alcoholic	11,131	13,418	3	66	66	D+
VB1.IN	Varun Beverages Ltd	India	Consumer Staple	Beverages-Non-Alcoholic	18,533	32,011	7	93	29	E
GCD.IN	Godrej Csm.Products(Nse)	India	Consumer Staple	Cosmetics/Personal Care	12,069	17,276	7	27	36	C
HDL.IN	Hindustan Unilever	India	Consumer Staple	Cosmetics/Personal Care	60,891	41,276	5	62	52	D+
NES.IN	Nestle India	India	Consumer Staple	Food-Misc Preparation	24,482	20,882	4	53	53	D+
IT.IN	ITC	India	Consumer Staple	Tobacco	58,559	72,800	5	52	58	D-
ASF.IN	Au Small Finance Bank	India	Financial	Banks-Money Center	4,506	18,822	3	84	46	C
DL.IN	Dlf (Nse)	India	Financial	Real Estate Dvlpmt/Ops	19,673	29,577	4	95	39	C-
ROB.IN	Aurobindo Pharma	India	Health Care	Medical-Generic Drugs	7,593	13,916	4	39	53	C-
CPL.IN	Cipla	India	Health Care	Medical-Generic Drugs	13,617	28,410	7	87	63	B
ZO1.IN	Zomato	India	Retail	Retail-Internet	24,438	1,72,663	4	33	75	D
TSE.IN	Tata Consultancy Svs.	India	Technology	Computer-Tech Services	1,57,666	92,955	6	67	55	D-
BFL.IN	Mphasis (Nse)	India	Technology	Computer-Tech Services	5,703	17,277	4	62	60	D+
LR1.IN	LTIMindtree	India	Technology	Computer-Tech Services	18,660	21,648	3	59	70	D-

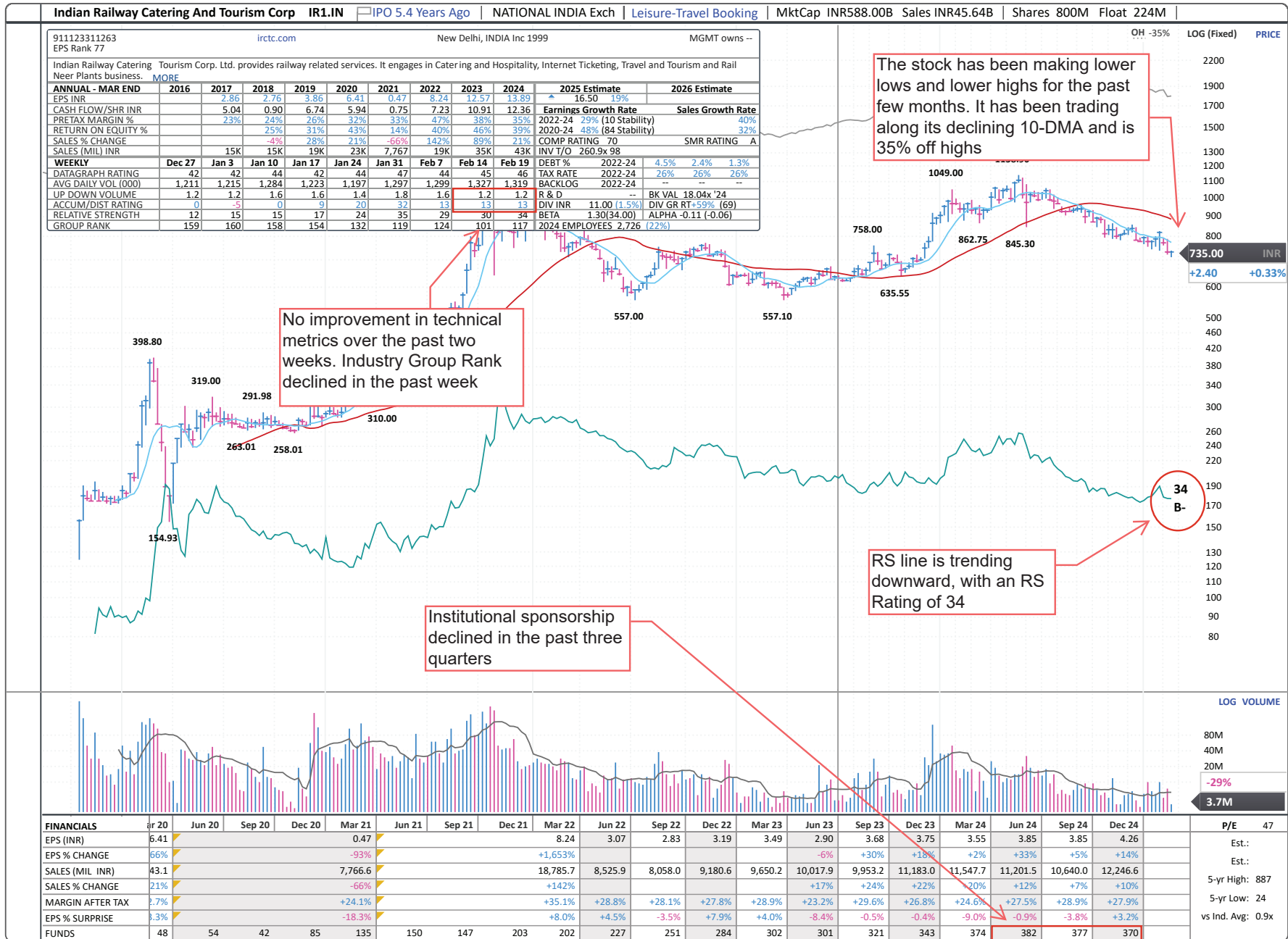


Symbol	Name	Trading Country	Sector Name	Industry Group Name	Market Value, USD (Mil)	Avg Daily Dollar Vol (000), USD	Negative Alert Score, 10 Wks	EPS Rank	RS Rating	A/D Rating
TTP.IN	Tata Power	India	Utility	Utility-Electric Power	12,793	31,803	7	83	41	C+
NTP.IN	NTPC Ltd	India	Utility	Utility-Electric Power	35,152	48,446	7	66	41	D+
PGC.IN	Power Grid Corp.Of India	India	Utility	Utility-Electric Power	28,174	35,167	7	50	39	E
BCA.ID	Bank Central Asia	Indonesia	Financial	Banks-Money Center	67,489	45,847	6	89	38	E
413.KW	Mabanee	Kuwait	Financial	Real Estate Dvlpmt/Ops	3,623	2,586	5	42	16	D-
TENN.MY	Tenaga Nasional	Malaysia	Energy	Energy-Alternative/Other	18,045	23,145	3	90	84	D-
UEMS.MY	Uem Sunrise	Malaysia	Financial	Real Estate Dvlpmt/Ops	1,007	2,299	3	47	35	D+
FMU.MX	Fomento Economico Mexicano	Mexico	Consumer Staple	Beverages-Non-Alcoholic	18,834	22,116	4	82	21	B
BDO.PH	Bdo Unibank	Philippines	Financial	Banks-Money Center	12,870	7,645	4	86	38	E
ICT.PH	Intl.Ctnr.Term.Svs.	Philippines	Financial	Real Estate Dvlpmt/Ops	12,042	8,349	4	95	38	D+
ACA.PH	Ayala	Philippines	Financial	Real Estate Dvlpmt/Ops	5,960	2,368	4	77	20	D-
BIC.SA	Saudi Basic Industries	Saudi Arabia	Basic Material	Chemicals-Specialty	52,554	27,411	4	65	10	E
SAT.SA	Saudi Tadawul Group	Saudi Arabia	Financial	Finance-Investment Mgmt	6,700	7,404	3	87	12	D+
ICF.SA	Acwa Power	Saudi Arabia	Utility	Utility-Electric Power	75,788	14,454	6	55	56	D-
NPHJ.ZA	Northam Platinum Hldgs	South Africa	Basic Material	Mining-Gold/Silver/Gems	2,328	12,410	4	65	14	E
BVTJ.ZA	Bidvest Group	South Africa	Consumer Staple	Food-Misc Preparation	4,682	9,355	7	79	23	D-
APNJ.ZA	Aspen Phmc.Hdg.	South Africa	Health Care	Medical-Generic Drugs	4,122	9,791	4	39	10	B-
CLSJ.ZA	Clicks Group	South Africa	Retail	Retail-Drug Stores	4,501	13,995	5	71	36	D
SHPJ.ZA	Shoprite	South Africa	Retail	Retail-Super/Mini Mkts	8,819	16,151	4	54	23	D-
JHD.KR	Lg Electronics	South Korea	Consumer Cyclical	Hsehold-Appliances/Wares	9,365	28,332	3	20	29	C-
ORC.KR	Celltrion	South Korea	Health Care	Medical-Biomed/Biotech	26,791	80,351	4	35	71	C
HGL.KR	Hugel	South Korea	Health Care	Medical-Biomed/Biotech	2,513	17,193	1	97	88	B-
HPM.KR	Hanmi Pharm	South Korea	Health Care	Medical-Generic Drugs	2,395	8,563	4	72	42	C+
NCT.KR	Ncsoft	South Korea	Technology	Computer Sftwr-Gaming	2,714	10,775	3	17	27	B-
SOA.TW	Solar Appd.Mats.Tech.	Taiwan	Basic Material	Mining-Metal Ores	1,074	15,757	4	61	76	C
TUT.TW	Taiwan Union Technology	Taiwan	Capital Equipment	Electrical-Power/Equipmt	1,391	28,555	3	79	56	C
KNK.TW	Kinik	Taiwan	Capital Equipment	Machinery-Tools & Rel	1,273	14,615	4	81	46	D+
RUE.TW	Ruentex Industries	Taiwan	Consumer Cyclical	Apparel-Clothing Mfg	2,327	8,555	4	26	39	D
PCN.TW	Pou Chen	Taiwan	Consumer Cyclical	Apparel-Shoes & Rel Mfg	3,384	13,741	4	57	56	C+
PRE.TW	Uni-President Ents.	Taiwan	Consumer Staple	Food-Grain & Related	14,228	18,853	5	58	53	D-
TBC.TW	Taiwan Coop.Finl.Hldg.	Taiwan	Financial	Banks-Money Center	11,367	7,636	5	73	35	D-
LOP.TW	Lotus Pharmaceutical	Taiwan	Health Care	Medical-Diversified	2,200	13,970	4	95	39	B-
PCS.TW	President Chain Store	Taiwan	Retail	Wholesale-Food	8,397	13,206	7	67	42	E
PEG.TW	Pegatron	Taiwan	Technology	Computer-Hardware/Perip	7,954	17,291	5	61	56	C
WIW.TW	Wiwynn Corporation	Taiwan	Technology	Computer-Hardware/Perip	11,804	1,65,564	5	98	46	D-
INV.TW	Inventec	Taiwan	Technology	Computer-Hardware/Perip	5,105	25,840	4	72	23	C-
GBT.TW	Giga-Byte Technology	Taiwan	Technology	Computer-Hardware/Perip	5,472	34,861	3	94	23	C-

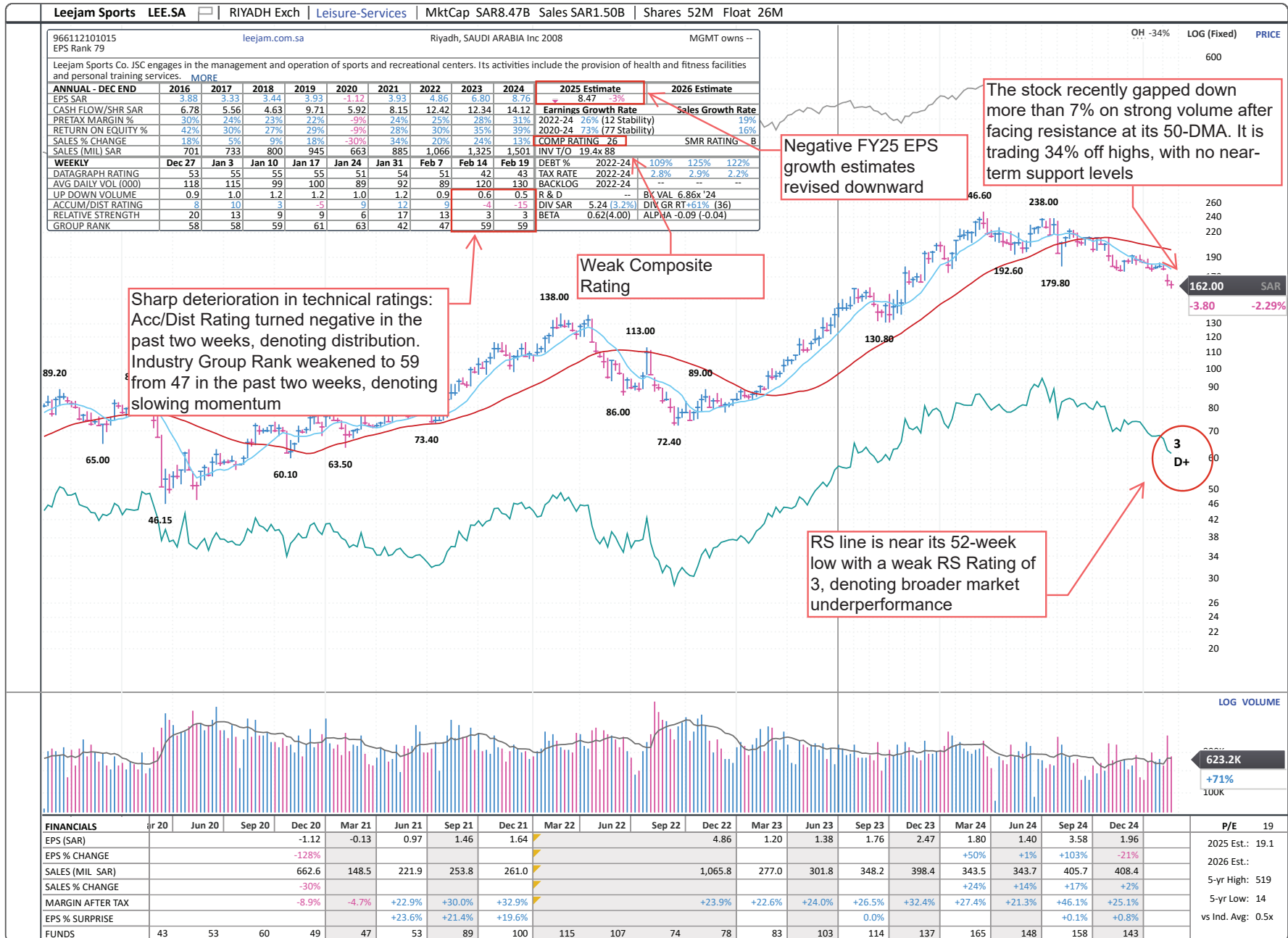
## Global Laggards

Symbol	Name	Trading Country	Sector Name	Industry Group Name	Market Value, USD (Mil)	Avg Daily Dollar Vol (000), USD	Negative Alert Score, 10 Wks	EPS Rank	RS Rating	A/D Rating
QUM.TW	Quanta Computer	Taiwan	Technology	Computer-Hardware/Perip	31,433	1,77,723	4	96	39	D+
ZHE.TW	Zhen Ding Tech.Holding	Taiwan	Technology	Elec-Semiconductor Mfg	3,535	16,972	3	82	66	C-
HON.TW	Hon Hai Precn.Ind.	Taiwan	Technology	Electronic-Parts	77,204	2,90,411	4	79	79	C-
FET.TW	Far Eastern New Century	Taiwan	Technology	Telecom Svcs-Integrated	5,280	16,066	6	64	23	C
INVX.TH	Indorama Ventures	Thailand	Basic Material	Chemicals-Specialty	3,735	11,469	3	38	77	D+
BDME.TH	Bangkok Dusit Med.Svs.	Thailand	Health Care	Medical-Hospitals	10,997	31,617	5	79	51	D+
CPSE.TH	Cp All	Thailand	Retail	Retail-Super/Mini Mkts	13,673	69,485	7	83	55	C-
IFF.AE	International Holdings	United Arab Emirates	Consumer Staple	Food-Meat Products	2,39,778	45,497	3	38	39	C

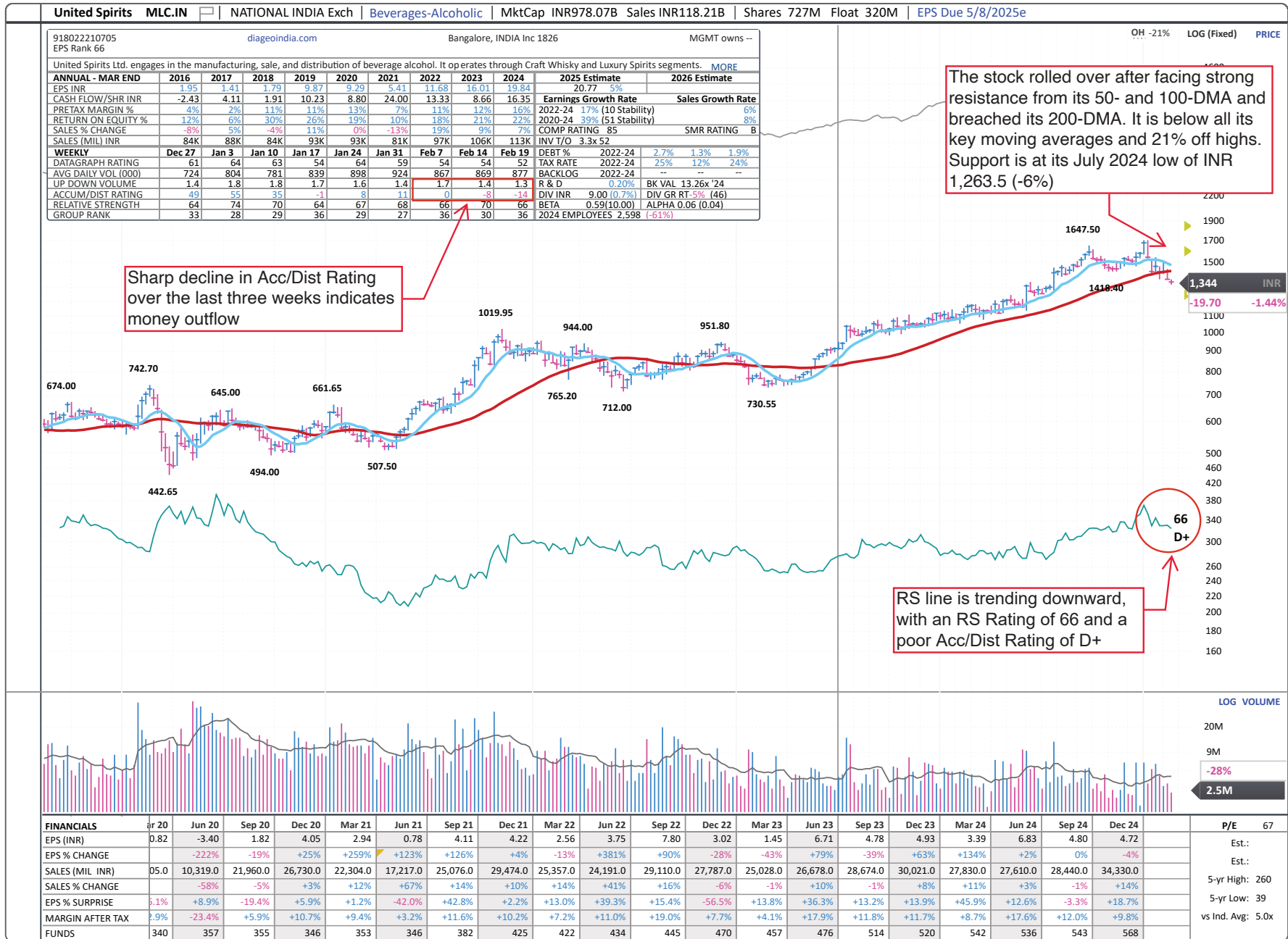
Emerging—Consumer Cyclical—Highlighted Laggard



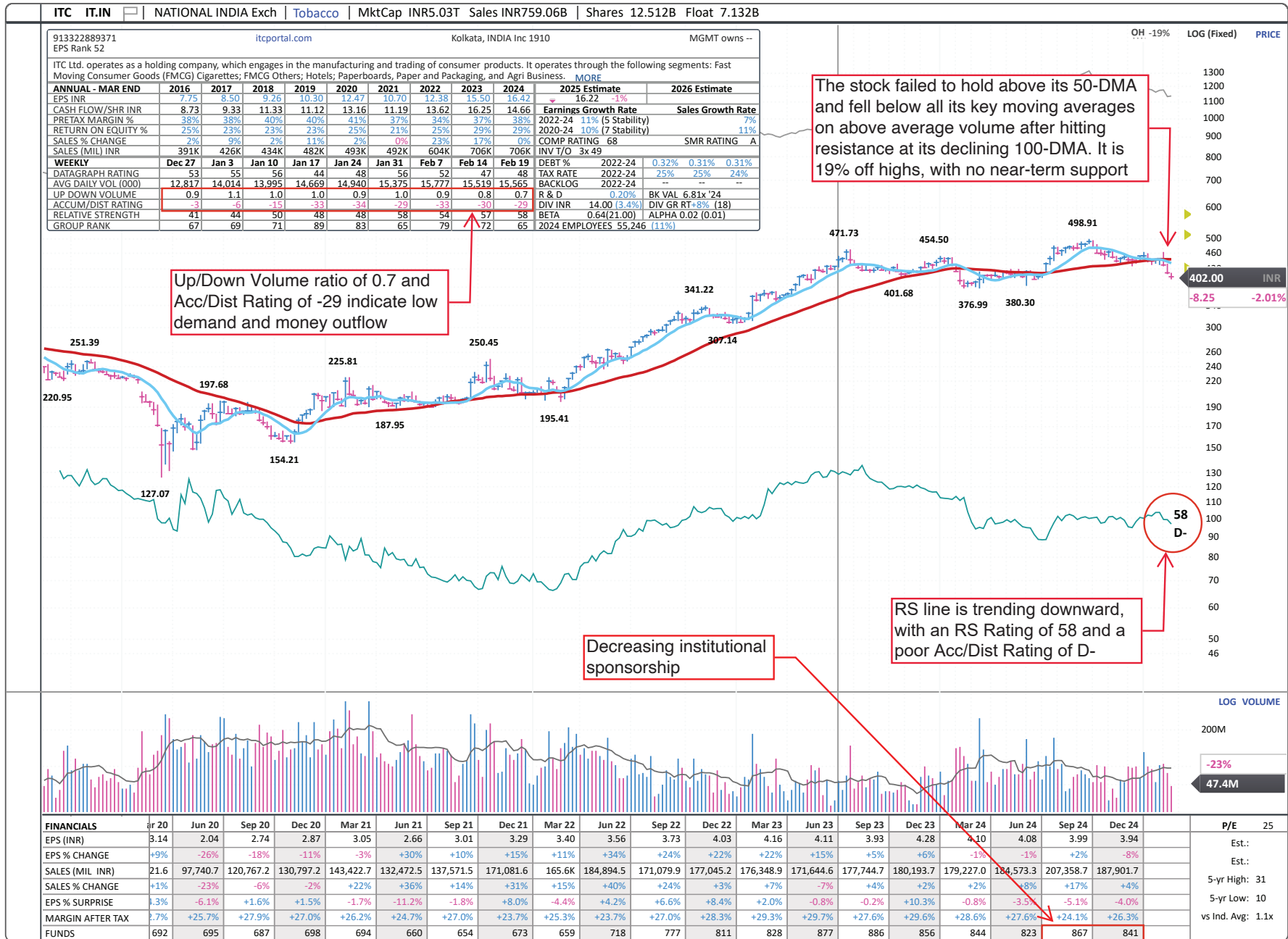
Emerging — Consumer Cyclical — Highlighted Laggard



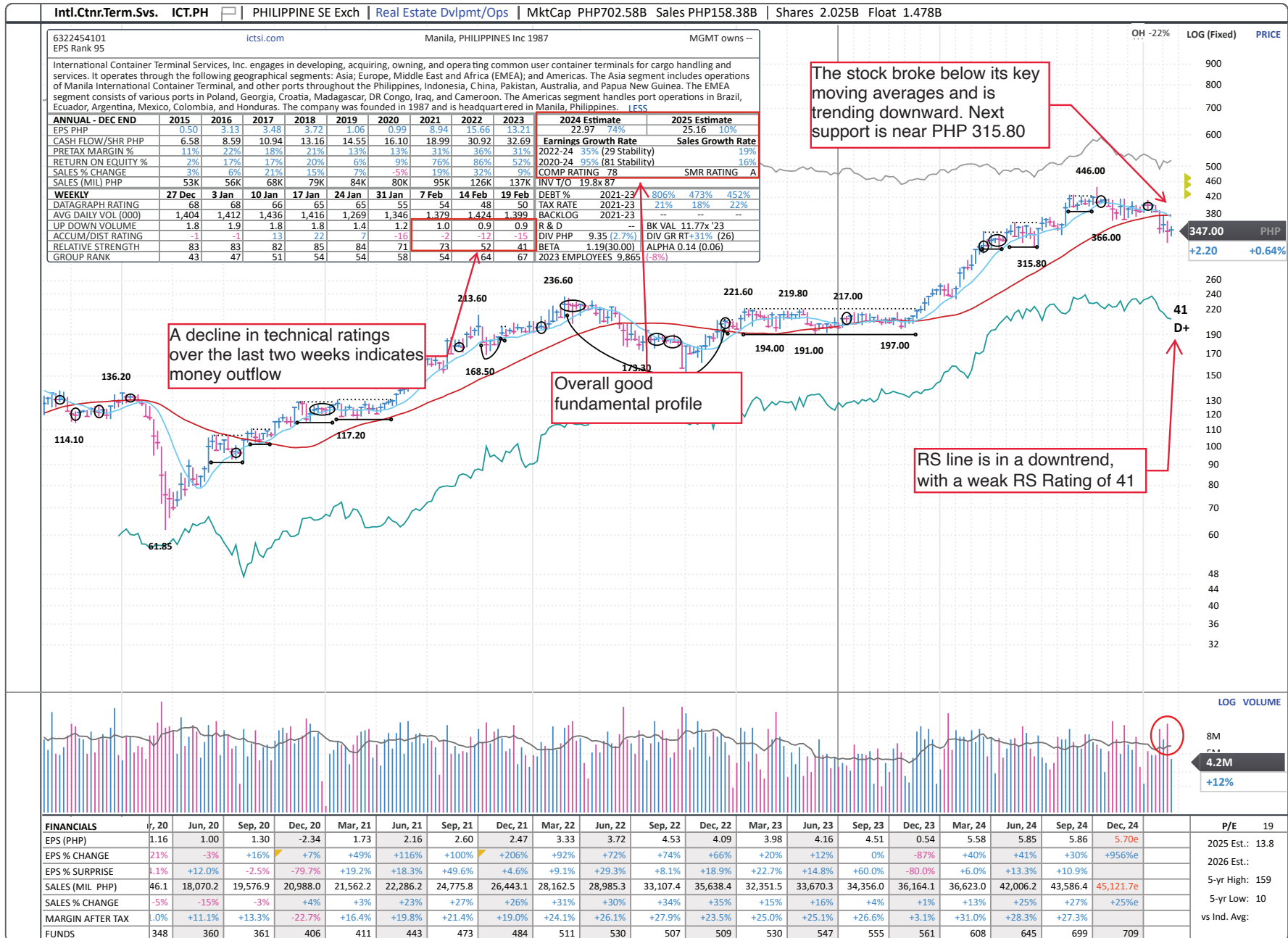
Emerging — Consumer Staple — Highlighted Laggard



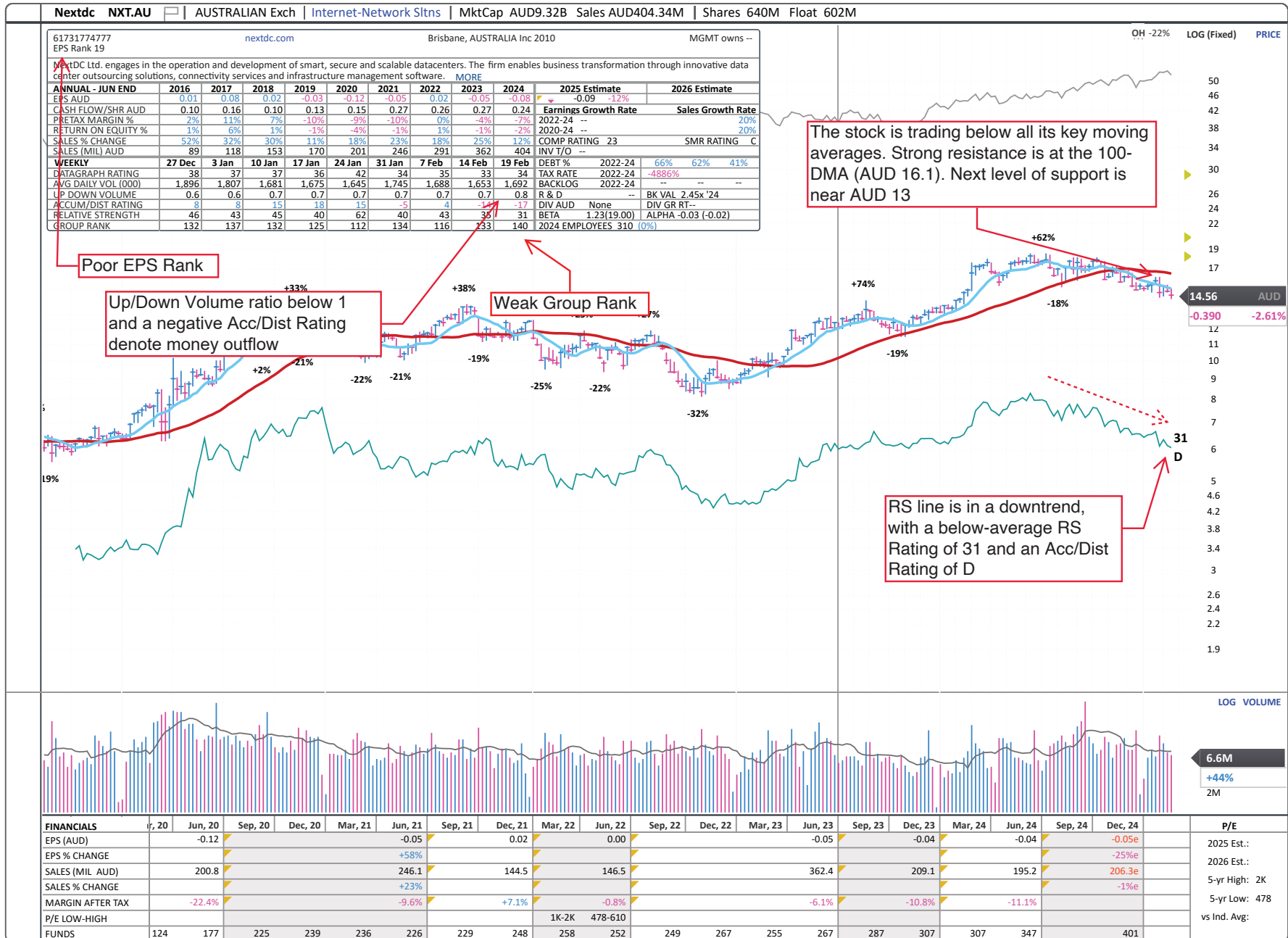
Emerging — Consumer Staple — Highlighted Laggard



Emerging — Financial — Highlighted Laggard



Emerging — Technology — Highlighted Laggard





## Disclaimer

William O'Neil + Co. Incorporated offers the world's leading institutional investment managers a distinct blend of quantitative, fundamental, and technical expertise in global stock buy-and-sell recommendations. Its core method profiles stocks displaying the characteristics of outperformance proven persistent over market history—drawn from the firm's industry-leading database.

William O'Neil + Co. Incorporated is an SEC Registered Investment Adviser. William O'Neil India Pvt. Ltd. and William O'Neil Shanghai Ltd. may develop research content on behalf of William O'Neil + Co. Our content should not be relied upon as the sole factor in determining whether to buy, sell, or hold a stock. For important information about reports, our business, and legal notices (including our Privacy Policy), please go to [williamoneil.com/legal](http://williamoneil.com/legal).

### Limitations of Use of Stock Charts

Our content and stock charts, which provide certain current and historical information, should not be relied upon as the sole factor in determining whether to buy, sell, or hold a stock. The charts provide certain current and historical information, but are not a substitute for a comprehensive analysis of the individual stocks.

### No Investment Banking

William O'Neil + Co. and its affiliates do not engage in investment banking and do not make a market in any securities. Neither William O'Neil + Co. nor any of its affiliates have, during the past 12 months, received any compensation from any of the companies discussed in this report. None of the companies discussed in this report are, or have been during the past 12 months, clients of William O'Neil + Co. or its affiliates.

### Proprietary Positions

William O'Neil + Co. does not maintain proprietary positions in any securities. Employees of William O'Neil + Co. and its affiliates may now or in the future own positions in the companies discussed in this report. As of the end of the month immediately preceding the date of publication of such reports, none of such employees or affiliates beneficially owned 1% or more of the common equity securities of any of the companies discussed in this report.

© 2025, William O'Neil + Company, Inc. All rights reserved.

No part of this material may be copied or duplicated in any form by any means or redistributed without the prior written consent of William O'Neil + Co.