

# European Weekly Summary

February 18, 2025

## Key points:

- *European indices continued their uptrend last week. Ten indices, including Germany and the U.K., hit a 52-week high and are trading constructively above short-term moving averages. France continued to trade higher after retaking all key moving averages in mid-January and is just 1% away from its 52-week high. Finland and Norway are also trading 1–2% below their respective 52-week high. Portugal recently retook its 200-DMA and is trading just 5% off highs. Denmark is the only country trading below the 50- and 200-DMA, 33% off 52-week highs with strong resistance at the declining 21-DMA. Most sectors closed higher except Health Care and Utility.*
- *Most sectors closed higher, led by Retail (+4.1%) and Consumer Cyclical (+3.8%). Capital Equipment, Technology, Basic Material, and Transportation closed with a gain of 2–3.5%. Staples, Financial, and Energy also gained 1.2–1.6%. Health Care lagged the most, declining 1.4% followed by Utility (-0.8%).*
- *On our rotation graph, most sectors exhibited positive momentum in the last week. Financial and Capital Equipment continue to show positive momentum in the last two weeks after exhibiting stalling action in the prior few weeks. Consumer Cyclical joined Financial and Capital Equipment in the best quadrant in the last week. Energy, Basic Material, and Technology maintained its strong positive momentum during the week. Transportation and Retail showed positive short-term momentum after a short period of underperformance. Health Care and Technology remained in the worst quadrant but are showing improving short-term momentum. Consumer Staple, Health Care, and Technology were the only sectors, which exhibited negative short-term momentum.*
- **European Focus List Update:**
  - *Actionable names include Ferrari (RACE.IT; RACE:IM), Boss (Hugo) (Xet) (BOSSX.DE; BOSS:GR), Lonza Group (LONN.CH; LONN:SW), Games Workshop (GAW.GB; GAW:LN), Rolls Royce Holdings (RR.GB; RR/:LN), and EQT (EQT.SE; EQT:SS).*
  - **Addition:** Moncler (MONC.IT).
  - **Removal:** Alfa Laval (ALF.SE).

## European Weekly Summary

### Europe's main index maintains an upward trajectory; hits an all-time high

- The Stoxx 600 gained ~1.9% last week, trending higher after breaking out from a flat consolidation in late-January. The index remained in a Confirmed Uptrend as it trades constructively above all key moving averages. On the downside, immediate support is at its 10-DMA (-1%), followed by 21-DMA (-2%).
- Among the 16 indices we cover, 14 are in a Confirmed Uptrend, Portugal in a Rally Attempt, and Denmark in an Uptrend Under Pressure. Average distribution days stand at 2.4.
- Last week, Belgium was upgraded to a Confirmed Uptrend.
- We recommend adding risks as indices are trading constructively and breaking into new 52-week highs. Focus on quality O'Neil ideas within strong industry groups and emerging out from proper bases or bouncing off key support levels. Reduce exposure in extended ideas and stocks breaking support levels.

### Sector Rotation:

- On our rotation graph, most sectors exhibited positive momentum in the last week. Financial and Capital Equipment continue to show positive momentum in the last two weeks after exhibiting stalling action in the prior few weeks. Consumer Cyclical joined Financial and Capital Equipment in the best quadrants in the last week. Energy, Basic Material, and Technology maintained strong positive momentum during the week. Transportation and Retail showed positive short-term momentum after a short period of underperformance. Consumer Staple, Health Care, and Technology were the only sectors which exhibited negative short-term momentum.

### European Focus List Update

**Addition: Moncler (MONC.IT)** – We added Moncler to our Developed Markets Focus List after the stock broke out of a stage-one, 47-week cup-with-handle base after reporting strong Q4 and FY24 results. Moncler is a luxury apparel company engaged in designing, producing, and distributing clothing under the brand Moncler (87% of revenues) and Stone Island (13%), acquired in 2021 to diversify beyond its winter-dependent business. Under CEO Remo Ruffini, revenue has grown over 4x in the past decade, exceeding the €3B milestone, with the brand structured around three key styles—Genius (modern luxury for Gen Z), Collection (aspirational lifestyle for Gen X/Millennials), and Grenoble (high-performance fashion for active Millennials), to appeal to a diverse customer base.

**Removal: Alfa Laval (ALF.SE)** – We removed Alfa Laval from the Developed Markets Focus List as the stock breached its 200-DMA on above-average volume after its Q4 FY24 print two weeks back. Revenue and EPS missed estimates by 4% and 9%, respectively. Weak demand for heat pumps continues to impact revenue growth. Support is at SEK 457 (-2%), followed by SEK 452 (-3%).

## Sector Heat Map: Average Perf. - Market Cap Average Weighted

(Market Cap > \$1BN & ADV > \$1M)

Sectors	5 Days	4 Weeks	8 Weeks	13 Weeks	26 Weeks	52 Weeks
Retail	4.1%	9.1%	10.5%	10.5%	16.1%	25.3%
Consumer Cyclical	3.8%	6.9%	13.0%	19.2%	14.7%	7.3%
Capital Equipment	3.6%	6.0%	11.1%	11.6%	17.2%	29.8%
Technology	3.1%	6.1%	12.4%	16.7%	15.6%	23.8%
Basic Material	2.8%	6.0%	10.4%	7.3%	7.6%	8.9%
Transportation	2.2%	6.3%	4.0%	3.9%	13.3%	15.3%
Consumer Staple	1.6%	4.1%	5.1%	4.1%	-2.1%	-4.5%
Financial	1.6%	6.2%	13.1%	13.7%	18.8%	32.2%
Energy	1.2%	-0.7%	10.2%	3.3%	-5.1%	0.7%
Utility	-0.8%	-0.7%	2.7%	-0.5%	0.9%	10.7%
Health Care	-1.4%	4.6%	8.9%	6.1%	-4.4%	9.4%

Source: William O'Neil + Co.

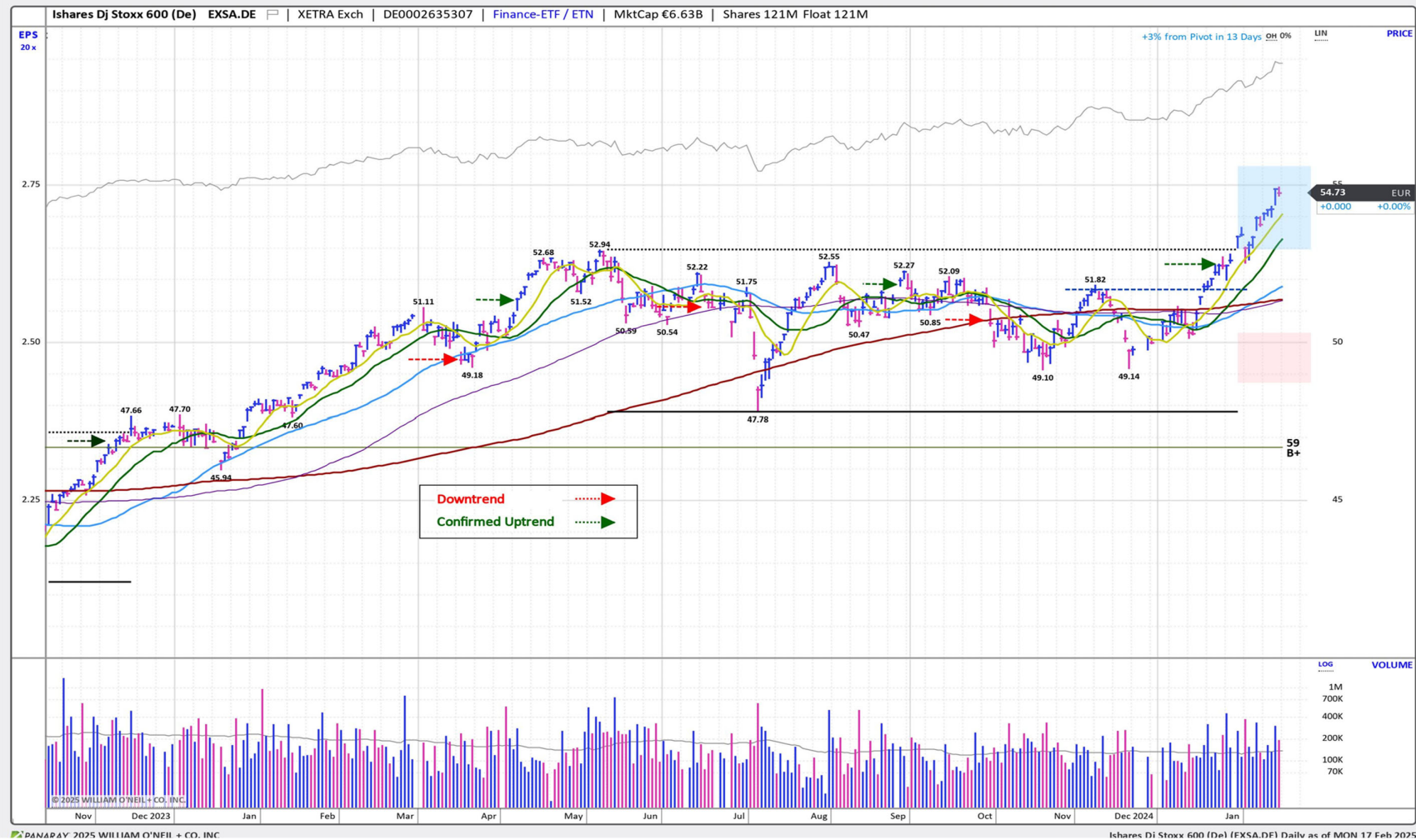
## Market Condition

### O'Neil Methodology

Country	Market Condition	Distribution Days
France	Confirmed Uptrend	2
Germany	Confirmed Uptrend	2
UK	Confirmed Uptrend	4
Stoxx600	Confirmed Uptrend	1
Denmark	UnderPressure	4
Ireland	Confirmed Uptrend	2
Finland	Confirmed Uptrend	1
Norway	Confirmed Uptrend	5
Sweden	Confirmed Uptrend	4
Switzerland	Confirmed Uptrend	2
Austria	Confirmed Uptrend	3
Italy	Confirmed Uptrend	3
Portugal	Rally Attempt	N/A
Spain	Confirmed Uptrend	2
Belgium	Confirmed Uptrend	1
Netherlands	Confirmed Uptrend	0
<b>All Europe (Average)</b>		<b>2.4</b>

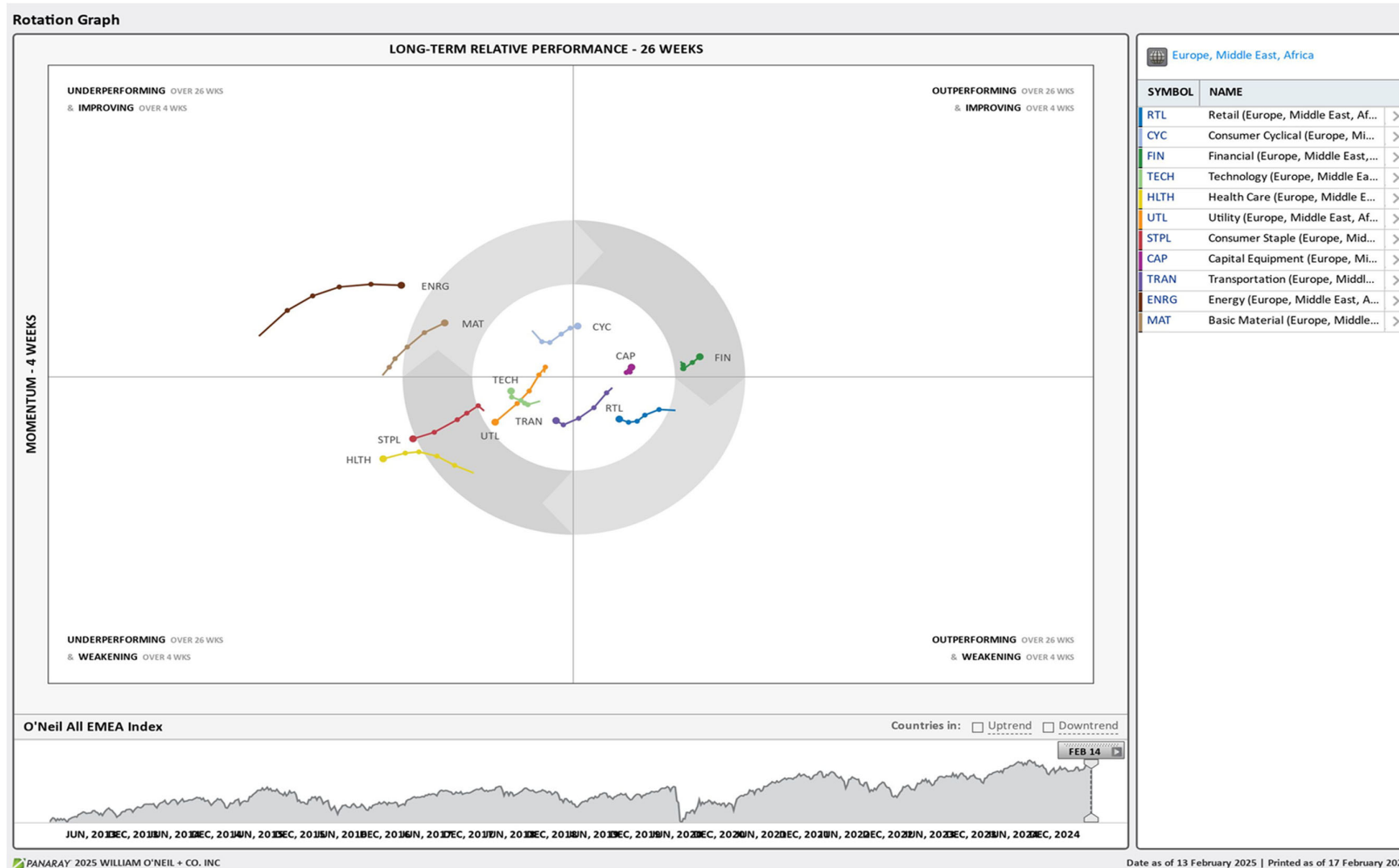
Source: William O'Neil + Co.

# iShares Dj Stoxx 600 (EXSA.DE) – Daily Datagraph®



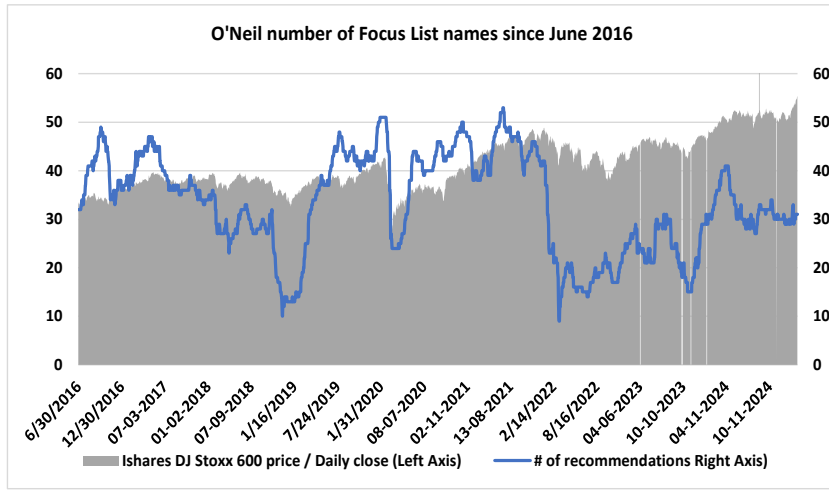
Source: William O'Neil + Co.

# EMEA Rotation Chart

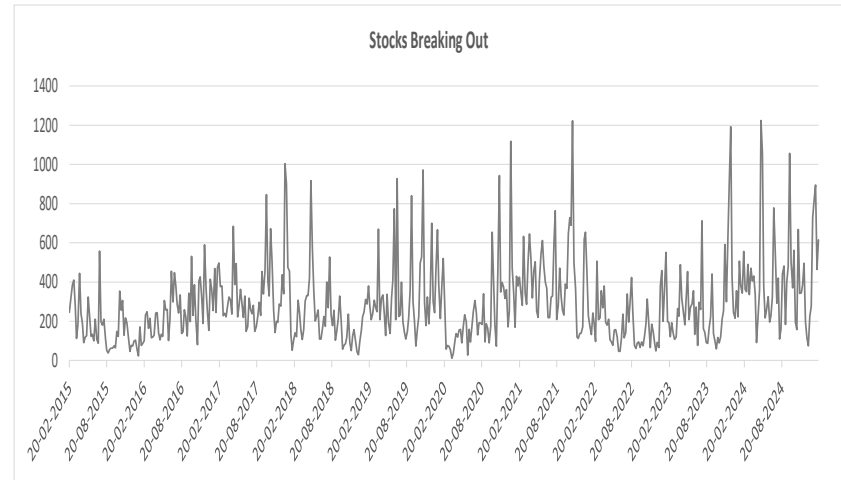


Source: William O'Neil + Co.

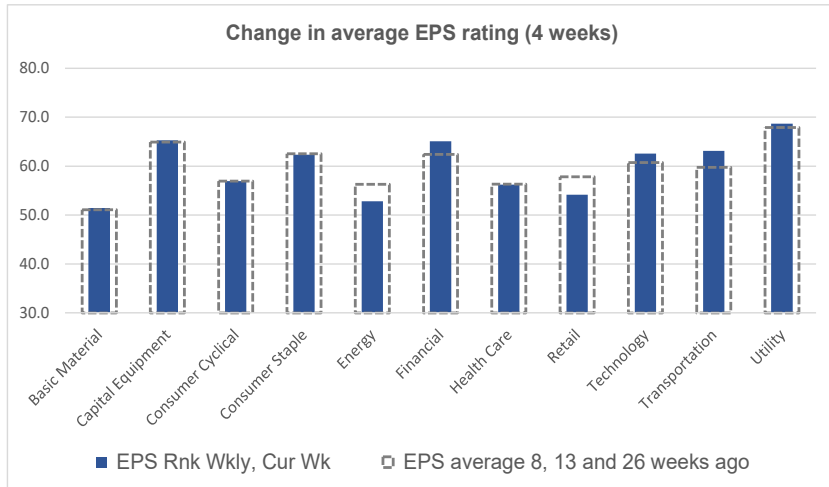
## Key Metrics Change: EPS, RS, # of EFL names & Breakouts



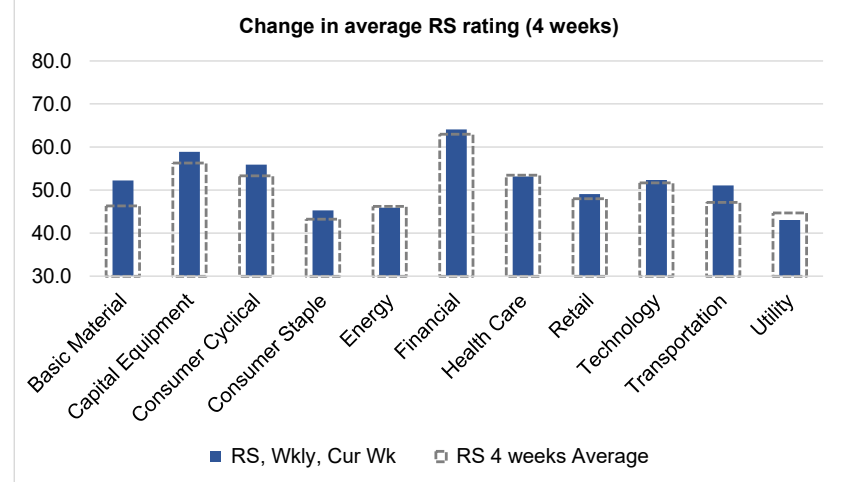
Source: William O'Neil + Co.



Source: William O'Neil + Co.



Source: William O'Neil + Co.



Source: William O'Neil + Co.

## How To Read The Sector Card

---

### European Focus List

O'Neil Recommendations

The **European Focus List (EFL)** is a proprietary list of long ideas that fit the fundamental and technical criteria of the O'Neil Methodology.

### Outperforming

Stocks breaking out from pivot

We recommend buying stocks at the **breakout level**. A breakout is a price movement of the security through an identified level of resistance (pivot point) after forming a consolidation base. Our proprietary chart patterns are based on over 50 years of our active research into the behavior of equities.

### Laggards

Stocks in which investors are losing interest

**Laggards** are stocks showing technical weakness. We believe these stocks are laggards relative to their own domestic markets and, if owned, need to be reviewed carefully as they may be vulnerable to further downside risk and underperformance.

### Top Rated

Stocks displaying the best Composite rating

The **Composite Rating** combines the EPS Rank, Relative Strength Rating, Industry Group Rank, SMR Rating, Accumulation/Distribution Rating, and the stock's percent off its 52-week high. More weight is placed on EPS Rank and Relative Strength Ratings. The resulting rating of technical and fundamental factors is compared against all other stocks in the trading country and assigned a rating from 1 to 99, with 99 being the best. A rating of 90 means the stock has outperformed 90% of all other stocks.

### Early Basing

Stocks trading near pivot on improving technical characteristics

**Stock near pivot point** (last line of resistance) with improving technical characteristics and above average fundamental profile based on O'Neil proprietary ratings and rankings.



# European Weekly Summary

WILLIAM O'NEIL+CO.

## Basic Material

### European Focus List

O'Neil recommendations

Symbol	Name	Mkt Val, USD (Mil)	Focus List Since
--------	------	--------------------	------------------

### Breaking Out This Week

Stocks breaking out from consolidation

Symbol	Name	Mkt Val, USD (Mil)	Composite Rating
VALM.FI	Valmet	5,362	73
ACX.ES	Acerinox 'R'	2,841	61
LXSX.DE	Lanxess (Xet)	2,713	54
NA.SE	Nolato B	1,431	89
ELKM.NO	Elkem	1,317	78

### Laggards

Stocks showing technical weakness

Symbol	Name	Mkt Val, USD (Mil)	A/D, Nbr	Rtg, Cur Wk
--------	------	--------------------	----------	-------------

### Top Rated

Stocks displaying the best Composite rating

Symbol	Name	Mkt Val, USD (Mil)	Composite Rating
VCT.FR	Vicat	2,094	98
ALLM.SE	Alleima	2,236	97
CEM.IT	Cementir Holding	2,184	97
ALTR.PT	Altri Sgps	1,301	97
BOL.SE	Boliden Ord Shs	9,850	96
HOC.GB	Hochschild Mining	1,311	94
FRES.GB	Fresnillo	7,426	93
NA.SE	Nolato B	1,431	89
HOLN.CH	Holcim	63,502	84
KEMR.FI	Kemira	3,514	83
ROBT.FR	Robertet	1,943	83
AIR.FR	L Air Lqe.Sc.Anyme. Pour	1,05,641	81
SOL.IT	Sol	3,650	80
NDAX.DE	Aurubis (Xet)	4,010	78
ELKM.NO	Elkem	1,317	78

### Basing

Stocks trading near pivot on improving technical characteristics

Symbol	Name	Mkt Val, USD (Mil)	Composite Rating
AIR.FR	L Air Lqe.Sc.Anyme. Pour	1,05,641	81
VALM.FI	Valmet	5,362	73
NDAX.DE	Aurubis (Xet)	4,010	78
FPEX.DE	Fuchs SE	2,454	72

# European Weekly Summary

## Capital Equipment

### European Focus List

O'Neil recommendations

Symbol	Name	Mkt Val, USD (Mil)	Focus List Since
SGM.FR	Safran	1,09,353	17-5-23
REL.GB	Relx	95,460	4-8-22
RR.GB	Rolls-Royce Holdings	67,039	15-11-23
RHMX.DE	Rheinmetall (Xet)	37,343	19-11-24

### Breaking Out This Week

Stocks breaking out from consolidation

Symbol	Name	Mkt Val, USD (Mil)	Composite Rating
VOBF.SE	Volvo B	48,591	86
LRRS.FR	Legrand	29,664	91
SAND.SE	Sandvik	28,060	76
INF.GB	Informa	15,039	74
VOLV.SE	Volvo A	13,649	89
ITRK.GB	Intertek Group	10,825	88
DPLMGB	Diploma	8,030	98
KCR1.FI	Konecranes	5,777	94
TOM.NO	Tomra Systems	5,068	93
HAGX.DE	Hensoldt (Xet)	4,942	65
KRNX.DE	Krones (Xet)	4,436	93
DOKA.CH	Dorma Kaba Hold	3,358	96
GBFX.DE	Bilfinger Berger (Xet)	2,127	91
KALC.FI	Kalmar Corporation B	2,000	75
BAM.NL	Bam Groep Kon.	1,416	90
KALC.FI	Kalmar Corporation B	2,000	75

### Laggards

Stocks showing technical weakness

Symbol	Name	Mkt Val, USD (Mil)	A/D, Nmbr	Rtg, Cur	Wk
ACLN.CH	Accelleron N	4,447			-52
NKT.DK	Nkt	3,558			-49
BA.GB	Bae Systems	46,608			-44
FUR.NL	Fugro C	1,762			-43
CGCB.FI	Cargotec B	2,732			-41
WPP.GB	Wpp	10,516			-34
SFSN.CH	Sfs Group	5,052			-32
PUBB.ES	Puig Brands B	3,339			-31
QQ.GB	Qinetiq Group	2,588			-30
ADEN.CH	Adecco Group	4,120			-29
NXS.FR	Nexans	4,350			-26

### Top Rated

Stocks displaying the best Composite rating

Symbol	Name	Mkt Val, USD (Mil)	Composite Rating
LAGR.SE	Lagercrantz Group B	4,465	99
MT.IT	Marie	3,328	99
RHMX.DE	Rheinmetall (Xet)	37,343	98
CSF.FR	Thales	35,732	98
DPLMGB	Diploma	8,030	98
TECE.FR	Technip Energies	5,217	98
REL.GB	Relx	95,460	96
LDO.IT	Leonardo	19,219	96
AM@F.FR	Dassault Aviation	18,045	96
HOTX.DE	Hochtief (Xet)	12,028	96
ADDT.SE	Addtech B	8,356	96
SUBF.SE	Securitas B	8,062	96
DOKA.CH	Dorma Kaba Hold	3,358	96
LOOM.SE	Loomis B	2,682	96
NSTF.SE	Ncc B	1,692	96

### Basing

Stocks trading near pivot on improving technical characteristics

Symbol	Name	Mkt Val, USD (Mil)	Composite Rating
CSF.FR	Thales	35,732	98
SAND.SE	Sandvik	28,060	76
KNEBV.FI	Kone B	25,118	72
8TRAX.DE	Traton Se (Xet)	17,733	94
LTBF.SE	Latour Investment B	17,031	88
SAAB.SE	Saab B	12,212	93
OTE1.FI	Metso Corporation	9,303	88
HUIF.FI	Huhtamaki	4,356	92
HMS.SE	Hms Networks	2,421	84
MTO.GB	Mitie Group	1,920	81

# European Weekly Summary

WILLIAM O'NEIL+CO.

## Consumer Cyclical

### European Focus List

O'Neil recommendations

Symbol	Name	Mkt Val, USD (Mil)	Focus List Since
RMS.FR	Hermes Intl.	3,14,492	16-1-25
ADXS.DE	Adidas (Xet)	48,881	20-11-23
MONC.IT	Moncler	19,430	14-2-25
GAW.GB	Games Workshop	6,062	29-1-25
LOTG.IT	Lottomatica Group	4,246	12-7-24
BOSSX.DE	Boss (Hugo) (Xet)	3,422	24-1-25
TGYM.IT	Technogym	2,425	13-2-24

### Breaking Out This Week

Stocks breaking out from consolidation

Symbol	Name	Mkt Val, USD (Mil)	Composite Rating
MONC.IT	Moncler	19,430	93
FHZN.CH	Flughafen Zurich	7,763	73
IVG.IT	Iveco Group	4,425	90
FR.FR	Valeo	2,917	95
LOHG.FR	Louis Hachette Group	1,620	67
SKIS.SE	Skistar B	1,231	69
SRC.GB	Sigmaroc	1,148	86

### Laggards

Stocks showing technical weakness

Symbol	Name	Mkt Val, USD (Mil)	A/D, Nnbr	Rtg, Cur Wk
WTB.GB	Whitbread	5,974		-48
PUMX.DE	Puma (Xet)	4,690		-32
TW.GB	Taylor Wimpey	5,218		-26

### Top Rated

Stocks displaying the best Composite rating

Symbol	Name	Mkt Val, USD (Mil)	Composite Rating
RMS.FR	Hermes Intl.	3,14,492	99
DOC.AT	Do Co Rest.Cater.	2,397	99
LIFC.SE	Lifco B	15,862	98
NHH.ES	Minor Hotels Europe & An	2,881	98
MIPS.SE	Mips	1,273	98
TXGN.CH	Tx Group Ag	2,451	97
MEGP.GB	Me Group Intl.	1,087	97
GAW.GB	Games Workshop	6,062	96
ZEG.GB	Zegona Communications	5,461	96
ITV.GB	Itv	3,626	96
C5H.IE	Cairn Homes (Dub)	1,468	96
ADSH.ES	Aedas Homes	1,286	96
FR.FR	Valeo	2,917	95
BETS.SE	Betsson B	1,917	95
HOME.ES	Neinor Homes	1,251	95

### Basing

Stocks trading near pivot on improving technical characteristics

Symbol	Name	Mkt Val, USD (Mil)	Composite Rating
EVDX.DE	Cts Eventim (Xet)	10,003	91
ITV.GB	Itv	3,626	96
TF1.FR	Tf1 (Tv.Fse.1)	1,844	80
C5H.IE	Cairn Homes (Dub)	1,468	96
MEGP.GB	Me Group Intl.	1,087	97

# European Weekly Summary

WILLIAM O'NEIL+CO.

## Consumer Staples

### European Focus List

O'Neil recommendations

Symbol	Name	Mkt Val, USD (Mil)	Focus List Since
GALD.CH	Galderma Group N	29,768	21-8-24
PFD.GB	Premier Foods	2,081	10-7-24

### Breaking Out This Week

Stocks breaking out from consolidation

Symbol	Name	Mkt Val, USD (Mil)	Composite Rating
ORK.NO	Orkla	9,679	86
EVA.ES	Ebro Foods	2,696	81

### Laggards

Stocks showing technical weakness

Symbol	Name	Mkt Val, USD (Mil)	A/D, Nbr	Rtg, Cur Wk
DGE.GB	Diageo	60,249		-34
BARN.CH	Barry Callebaut	6,439		-26

### Top Rated

Stocks displaying the best Composite rating

Symbol	Name	Mkt val, USD (Mil)	Composite Rating
AUSS.NO	Austevoll Seafood	2,007	96
IMB.GB	Imperial Brands	29,323	95
GNC.GB	Greencore Group	1,145	92
RBR.DK	Royal Unibrew	3,802	91
GALD.CH	Galderma Group N	29,768	88
CCH.GB	Coca-Cola Hbc (Cdi)	14,581	87
ORK.NO	Orkla	9,679	86
MHG.NO	Mowi	10,345	84
LSG.NO	Leroy Seafood Group	2,962	84
CWK.GB	Cranswick	3,403	83
ARYN.CH	Aryzta	2,041	82
AAK.SE	Aak	7,467	81
EVA.ES	Ebro Foods	2,696	81
PFD.GB	Premier Foods	2,081	81
BATS.GB	British American Tobacc	86,012	80

### Basing

Stocks trading near pivot on improving technical characteristics

Symbol	Name	Mkt Val, USD (Mil)	Composite Rating
CAB.DK	Carlsberg B	12,516	69
RBR.DK	Royal Unibrew	3,802	91
PFD.GB	Premier Foods	2,081	81

# European Weekly Summary

## Energy

### European Focus List

O'Neil recommendations

Symbol	Name	Mkt Val, USD (Mil)	Focus List Since
--------	------	--------------------	------------------

### Breaking Out This Week

Stocks breaking out from consolidation

Symbol	Name	Mkt Val, USD (Mil)	Composite Rating
AKER.NO	Aker	4,196	55

### Laggards

Stocks showing technical weakness

Symbol	Name	Mkt Val, USD (Mil)	A/D, Nnbr	Rtg, Cur Wk
EDPR.PT	Edp Renovaveis	9,498		-42
TRIG.GB	The Renewables Infr.Gp.	2,355		-35
SUBC.NO	Subsea 7	4,878		-31

### Top Rated

Stocks displaying the best Composite rating

Symbol	Name	Mkt Val, USD (Mil)	Composite Rating
MAU.FR	Maurel Et Prom	1,330	96
VL.R.FR	Vallourec	4,627	87
ODDR.NO	Odfjell Drilling	1,363	87
SEPL.GB	Seplat Ptl.Dev. (Lon) (Di)	1,485	85
SUBC.NO	Subsea 7	4,878	78
GTT.FR	Gtt	5,219	77
SBMO.NL	Sbm Offshore	3,300	76
TGS.NO	Tgs	2,029	76
NEOP.FR	Neoen	6,391	74
SPM.IT	Saipem	4,793	74
ENOG.GB	Energiean plc	2,300	70
SHEL.GB	Shell (Lon)	2,04,621	69
ITH.GB	Ithaca Energy	2,763	69
DOFG.NO	Dof Group	2,032	69
VPK.NL	Koninklijke Vopak	5,556	68

### Basing

Stocks trading near pivot on improving technical characteristics

Symbol	Name	Mkt Val, USD (Mil)	Composite Rating
--------	------	--------------------	------------------

# European Weekly Summary

## Financial

### European Focus List

O'Neil recommendations

Symbol	Name	Mkt Val, USD (Mil)	Focus List Since
ADYE.NL	Adyen	60,790	10-12-24
III.GB	3i Group	50,046	22-8-24
EQT.SE	Eqst	42,945	22-2-24
TLXX.DE	Talanx Aktsgf. (Xet)	22,815	15-11-24
BP.IT	Banco Bpm	13,928	14-11-24
WISE.GB	WISE A	13,712	22-1-25
BWGP.AT	Bawag Group	7,514	18-11-24
SQN.CH	Swissquote 'R'	7,175	16-1-24

### Breaking Out This Week

Stocks breaking out from consolidation

Symbol	Name	Mkt Val, USD (Mil)	Composite Rating
INGA.NL	Ing Groep	54,156	78
NBH.FI	Nordea Bank (Hel)	43,493	87
NN.NL	Nn Group	13,398	55
ABN.NL	Abn Amro Bank	9,089	77
UNIQ.AT	Uniq Insu Gr Ag	2,737	88
XPS.GB	Xps Pensions Group	1,025	97

### Laggards

Stocks showing technical weakness

Symbol	Name	Mkt Val, USD (Mil)	A/D, Nnbr	Rtg, Cur Wk
UKW.GB	Greencoat Uk Wind	3,209		-46
XIOR.BE	Xior Student Housing	1,343		-40
ENAV.IT	Enav	1,944		-28
CAST.SE	Castellum	5,560		-26

### Top Rated

Stocks displaying the best Composite rating

Symbol	Name	Mkt Val, USD (Mil)	Composite Rating
ADYE.NL	Adyen	60,790	99
STAN.GB	Standard Chartered	34,215	99
A5G.IE	Aib Group	14,965	99
SQN.CH	Swissquote 'R'	7,175	99
TBCG.GB	Tbc Bank Group	2,866	99
QLT.GB	Quilter	2,782	99
TCAP.GB	Tp Icap	2,479	99
FTKX.DE	Fintech Group (Xet)	2,143	99
CFT.CH	Compagnie Financiere Tr	1,772	99
ALPH.GB	Alpha Group Plc	1,342	99
HSBA.GB	Hsbc Hdq. (Ord \$0.50)	1,95,758	98
III.GB	3i Group	50,046	98
NWVG.GB	Natwest Group	43,537	98
ENX.FR	Euronext	12,939	98
BMED.IT	Banca Mediolanum	10,714	98

### Basing

Stocks trading near pivot on improving technical characteristics

Symbol	Name	Mkt Val, USD (Mil)	Composite Rating
CRDA.FR	Credit Agricole	48,516	90
ADM.GB	Admiral Group	10,874	90
ICG.GB	Intermediate Capital Gp.	8,898	87
RMV.GB	Rightmove	6,647	87
AZM.IT	Azimut Holding	4,098	84
BGEO.GB	Lion Finance Group PLC	2,916	98
BURE.SE	Bure Equity	2,878	95
NP3.SE	Np3 Fastigheter	1,572	90

# European Weekly Summary

## Healthcare

### European Focus List

O'Neil recommendations

Symbol	Name	Mkt Val, USD (Mil)	Focus List Since
LONN.CH	Lonza Group	47,813	5-2-25
SOBI.SE	Swedish Orphan Biovitrum	10,301	19-8-24
VITR.SE	Vitrolife	2,614	23-7-24
VIMG.SE	Vimian Group	2,225	16-8-24

### Breaking Out This Week

Stocks breaking out from consolidation

Symbol	Name	Mkt Val, USD (Mil)	Composite Rating
RO.CH	Roche Holdings 'B'	37,604	66

### Laggards

Stocks showing technical weakness

Symbol	Name	Mkt Val, USD (Mil)	A/D, Nbr	Rtg, Cur Wk
COL.DK	Coloplast B	23,547		-29

### Top Rated

Stocks displaying the best Composite rating

Symbol	Name	Mkt Val, USD (Mil)	Composite Rating
ORNB.FI	Orion B	5,864	99
CHM.DK	Chemometec	1,400	99
ORNA.FI	Orion A	1,742	98
BIM.FR	Biomerieux	14,221	97
HIK.GB	Hikma Pharmaceuticals	6,418	96
FAGR.BE	Fagron	1,531	94
BIGB.SE	Biogaia B	1,170	94
MOVE.CH	Medacta Group	3,069	93
XVIV.SE	Xvivo Perfusion	1,405	93
ADD.SE	Addlife B	1,930	91
HLN.GB	Haleon	43,911	89
SFZN.CH	Siegfried 'R'	5,329	89
SQ@F.FR	Sanofi	1,37,446	86
ALK.DK	Alk-Abello B	4,415	86
TERA.FI	Terveystalo	1,450	86

### Basing

Stocks trading near pivot on improving technical characteristics

Symbol	Name	Mkt Val, USD (Mil)	Composite Rating
FAGR.BE	Fagron	1,531	94

# European Weekly Summary

## Retail

### European Focus List

O'Neil recommendations

Symbol	Name	Mkt Val, USD (Mil)	Focus List Since
PND.DK	Pandora	14,541	18-12-24

### Breaking Out This Week

Stocks breaking out from consolidation

Symbol	Name	Mkt Val, USD (Mil)	Composite Rating
--------	------	--------------------	------------------

### Laggards

Stocks showing technical weakness

Symbol	Name	Mkt Val, USD (Mil)	A/D, Nnbr	Rtg, Cur Wk
COL.BE	Colruyt Group	4,818		-50
GFTU.GB	Grafton Group Uts.	2,295		-37
RDCX.DE	Redcare Pharmacy	2,483		-29
MAB.GB	Mitchells & Butlers	1,703		-28

### Top Rated

Stocks displaying the best Composite rating

Symbol	Name	Mkt Val, USD (Mil)	Composite Rating
EI.FR	Essilorluxottica	1,41,381	98
ZALX.DE	Zalando (Xet)	10,883	98
CLAS.SE	Clas Ohlson B	1,404	98
TSCO.GB	Tesco	33,718	97
BC.IT	Brunello Cucinelli	9,333	96
ELPB.SE	Electrolux Professional B	1,975	96
CPG.GB	Compass Group	60,751	95
MKS.GB	Marks & Spencer Group	9,212	93
PND.DK	Pandora	14,541	92
AVOL.CH	Avolta Ag	6,913	92
WOSG.GB	Watches of Switzerland C	1,672	92
IND.ES	Inditex	1,77,711	88
SSPG.GB	Ssp Group	1,807	87
EPR.NO	Europris	1,181	87
CURY.GB	Currys	1,420	84

### Basing

Stocks trading near pivot on improving technical characteristics

Symbol	Name	Mkt Val, USD (Mil)	Composite Rating
IND.ES	Inditex	1,77,711	88
SON.PT	Sonae Sgps	1,975	77



# European Weekly Summary

## Technology

### European Focus List

O'Neil recommendations

Symbol	Name	Mkt Val, USD (Mil)	Focus List Since
NEMX.DE	Nemetschek (Xet)	14,871	15-11-23

### Breaking Out This Week

Stocks breaking out from consolidation

Symbol	Name	Mkt Val, USD (Mil)	Composite Rating
PROS.NL	Prosus N	1,12,293	97
HEMN.SE	Hemnet Group	3,584	99
PTEC.GB	Playtech	2,955	91

### Laggards

Stocks showing technical weakness

Symbol	Name	Mkt Val, USD (Mil)	A/D, Nbr	Rtg, Cur Wk
KNOS.GB	Kainos Group	1,249		-34

### Top Rated

Stocks displaying the best Composite rating

Symbol	Name	Mkt Val, USD (Mil)	Composite Rating
HEMN.SE	Hemnet Group	3,584	99
VITB.SE	Vitec Software Group B	2,226	99
BCG.GB	Baltic Classifieds Grp	2,179	99
TRB.SE	Truecaller B	1,930	99
TRST.GB	Trustpilot Group	1,789	99
UNMG.NL	Universal Music Group	55,454	98
SGE.GB	Sage Group	16,576	98
FORT.SE	Fortnox Ab	4,290	98
VAIS.FI	Vaisala A	1,866	98
PROS.NL	Prosus N	1,12,293	97
DSY.FR	Dassault Systemes	56,796	97
TEMN.CH	Temenos N	6,586	97
QTGR.FI	Qt Group	2,369	97
SAPX.DE	Sap (Xet)	3,57,014	95
EKBF.SE	Hexagon B	31,345	95

### Basing

Stocks trading near pivot on improving technical characteristics

Symbol	Name	Mkt Val, USD (Mil)	Composite Rating
HY9H.DE	Hynix Semiconductor	1,01,223	75
UNMG.NL	Universal Music Group	55,454	98
TEL.SE	Telia Company	12,440	82
TEMN.CH	Temenos N	6,586	97
TKA.AT	Telekom Austria	5,934	75
QTGR.FI	Qt Group	2,369	97
NOS.PT	Nos Sgps	1,989	89
ANOD.SE	Addnode Group B	1,396	88
KTNX.DE	Kontron (Xet)	1,374	75

# European Weekly Summary

## Transportation

### European Focus List

O'Neil recommendations

Symbol	Name	Mkt Val, USD (Mil)	Focus List Since
DSV.DK	Dsv	48,759	16-10-24
INPW.NL	Inpost	8,930	16-5-24

### Breaking Out This Week

Stocks breaking out from consolidation

Symbol	Name	Mkt Val, USD (Mil)	Composite Rating
--------	------	--------------------	------------------

### Laggards

Stocks showing technical weakness

Symbol	Name	Mkt Val, USD (Mil)	A/D, Nnbr	Rtg, Cur Wk
HOAH.NO	Hoegh Autoliners	1,628		-61
CADE.NO	Cadeler	1,691		-40
SHUR.BE	Shurgard Self Storage	3,452		-27

### Top Rated

Stocks displaying the best Composite rating

Symbol	Name	Mkt val, USD (Mil)	Composite Rating
ALD.FR	Ayvens	6,519	94
CKN.GB	Clarkson	1,705	94
IAG.GB	Intl.Cons.Airl.Gp.(Cdi)	20,585	93
PST.IT	Poste Italiane	20,147	92
IDL.FR	Id Logistics Group	2,851	92
IDS.GB	International Distribution	4,419	90
DSA.DK	A P Moller Maersk A	16,271	87
DSB.DK	A P Moller Maersk B	10,332	87
CAF.ES	Const Y Auxiliar De Ferr	1,286	87
RYA.IE	Ryanair Holdings	22,609	81
INPW.NL	Inpost	8,930	80
WWI.NO	Wilhs.Wilhelmsen Hdg.'A'	1,258	77
LOGLES	Logista Hold	4,056	76
EZJ.GB	Easyjet	4,961	74
OES.AT	Osterreichische Post	2,176	72

### Basing

Stocks trading near pivot on improving technical characteristics

Symbol	Name	Mkt Val, USD (Mil)	Composite Rating
DSA.DK	A P Moller Maersk A	16,271	87
DSB.DK	A P Moller Maersk B	10,332	87
IDL.FR	Id Logistics Group	2,851	92
CAF.ES	Const Y Auxiliar De Ferr	1,286	87

# European Weekly Summary

## Utility

### European Focus List

O'Neil recommendations

Symbol	Name	Mkt Val, USD (Mil)	Focus List Since
--------	------	--------------------	------------------

### Breaking Out This Week

Stocks breaking out from consolidation

Symbol	Name	Mkt Val, USD (Mil)	Composite Rating
--------	------	--------------------	------------------

### Laggards

Stocks showing technical weakness

Symbol	Name	Mkt Val, USD (Mil)	A/D, Nbr	Rtg, Cur Wk
ECP.PT	Edp Energias De Portuga	12,916		-57
SSE.GB	Sse	20,995		-45
RWEX.DE	Rwe (Xet)	22,284		-39
SVT.GB	Severn Trent	9,377		-33

### Top Rated

Stocks displaying the best Composite rating

Symbol	Name	Mkt Val, USD (Mil)	Composite Rating
ELE.ES	Endesa	23,952	93
DRX.GB	Drax Group	2,904	85
IBE.ES	Iberdrola	90,560	80
TEP.GB	Telecom Plus	1,698	75
IRE.IT	Iren	2,850	73
ENEL.IT	Enel	73,354	70
A2A.IT	A2a	7,295	70
IG.IT	Italgas	5,052	69
VIE.FR	Veolia Environ	21,473	68
TRN.IT	Terna Rete Elettrica Naz	16,502	68
REN.PT	Ren Redes Energeticas P	1,684	67
BKW.CH	Bkw	8,976	65
ENGL.FR	Engie	39,736	64
SVT.GB	Severn Trent	9,377	61
HER.IT	Hera	5,624	61

### Basing

Stocks trading near pivot on improving technical characteristics

Symbol	Name	Mkt Val, USD (Mil)	Composite Rating
--------	------	--------------------	------------------

### Disclaimer

William O'Neil + Co. Incorporated offers the world's leading institutional investment managers a distinct blend of quantitative, fundamental, and technical expertise in global stock buy-and-sell recommendations. Its core method profiles stocks displaying the characteristics of outperformance proven persistent over market history—drawn from the firm's industry-leading database.

William O'Neil + Co. Incorporated is an SEC Registered Investment Advisor. William O'Neil India Pvt Ltd Associates and William O'Neil Shanghai Pvt. Ltd. may develop research content on behalf of William O'Neil + Co. Our content should not be relied upon as the sole factor in determining whether to buy, sell, or hold a stock. For important information about reports, our business, and legal notices (including our Privacy Policy), please go to [williamoneil.com/legal](http://williamoneil.com/legal).

#### Limitations of Use of Stock Charts

Our content and stock charts, which provide certain current and historical information, should not be relied upon as the sole factor in determining whether to buy, sell, or hold a stock. The charts provide certain current and historical information, but are not a substitute for a comprehensive analysis of the individual stocks.

#### No Investment Banking

William O'Neil + Co. and its affiliates do not engage in investment banking and do not make a market in any securities. Neither William O'Neil + Co. nor any of its affiliates have, during the past 12 months, received any compensation from any of the companies discussed in this report. None of the companies discussed in this report are, or have been during the past 12 months, clients of William O'Neil + Co. or its affiliates.

#### Proprietary Positions

William O'Neil + Co. does not maintain proprietary positions in any securities. Employees of William O'Neil + Co. and its affiliates may now or in the future own positions in the companies discussed in this report. As of the end of the month immediately preceding the date of publication of such reports, none of such employees or affiliates beneficially owned 1% or more of the common equity securities of any of the companies discussed in this report.

© 2025, William O'Neil + Company, Inc. All rights reserved.

No part of this material may be copied or duplicated in any form by any means or redistributed without the prior written consent of William O'Neil + Co.