

vimian.com Stockholm, SWEDEN Inc 2020 MGMT owns -- 1% from Pivot in 2 Weeks

vimian Group AB operates as an animal health company. It focuses in the areas of animal health such as specialty pharmacy, diagnostics, medical technology, and veterinary services. [MORE](#)

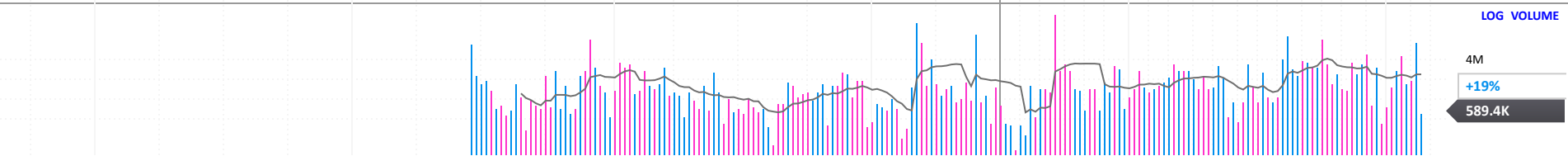
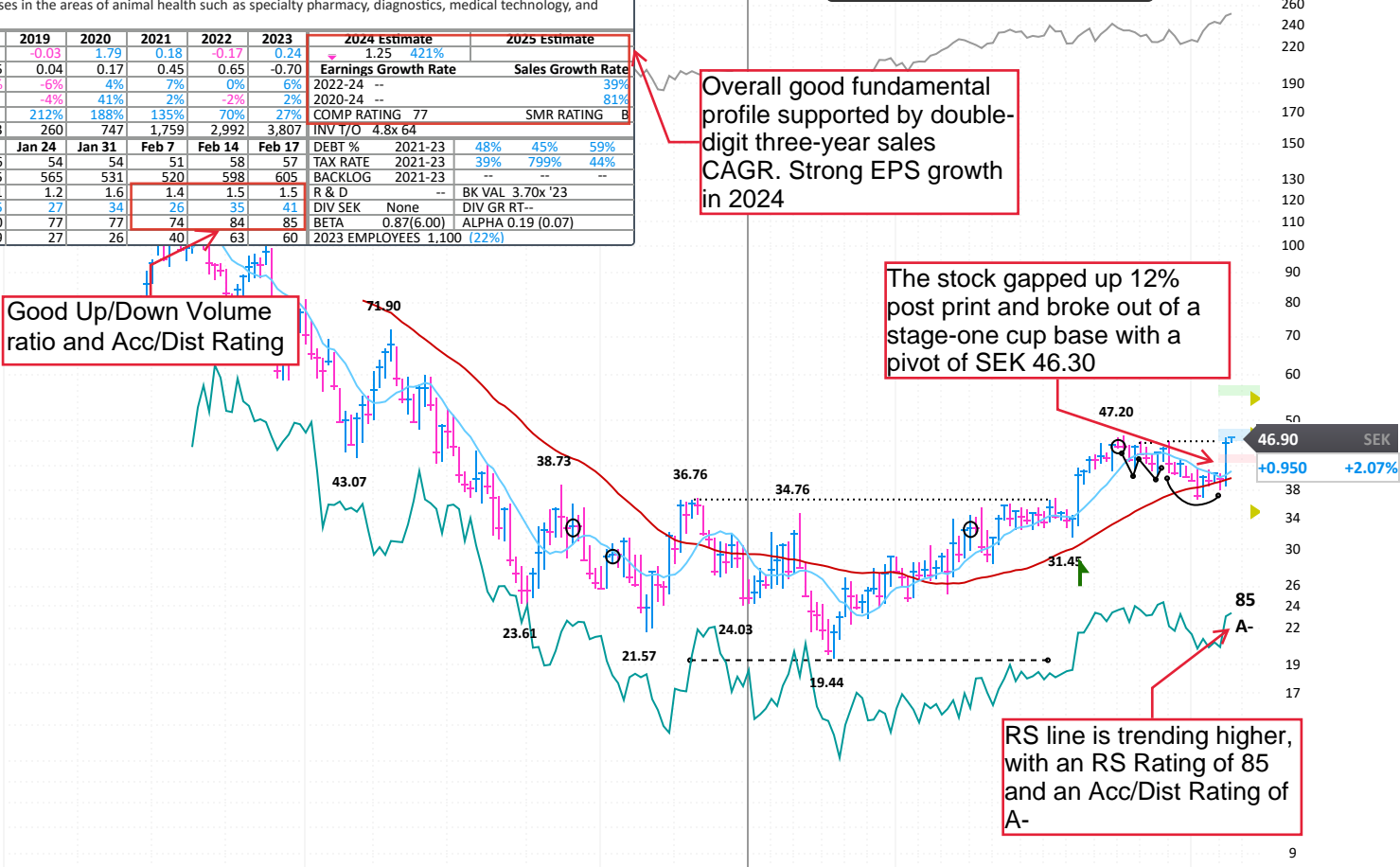
ANNUAL - DEC END	2015	2016	2017	2018	2019	2020	2021	2022	2023	2024 Estimate	2025 Estimate
EPS SEK				-0.02	-0.03	1.79	0.18	-0.17	0.24	1.25	421%
CASH FLOW/SHR SEK				-0.05	0.04	0.17	0.45	0.65	-0.70		
PRETAX MARGIN %				-19%	-6%	4%	7%	0%	6%	2022-24 --	39%
RETURN ON EQUITY %					-4%	41%	2%	-2%	2%	2020-24 --	81%
SALES % CHANGE					212%	188%	135%	70%	27%	COMP RATING 77	SMR RATING B
SALES (MIL) SEK			83	260	747	1,759	2,992	3,807		INVT/O 4.8x 64	
WEEKLY	Dec 27	Jan 3	Jan 10	Jan 17	Jan 24	Jan 31	Feb 7	Feb 14	Feb 17		
DATAGRAPH RATING	52	53	47	56	54	54	51	58	57	DEBT % 2021-23	48%
AVG DAILY VOL (000)	487	487	475	495	565	531	520	598	605	TAX RATE 2021-23	45%
UP/DOWN VOLUME	0.8	0.8	0.8	1.1	1.2	1.6	1.4	1.5	1.5	BACKLOG 2021-23	799%
ACCUM/DIST RATING	2	-6	-2	25	27	34	26	35	41	R & D	39%
RELATIVE STRENGTH	79	76	69	80	77	77	74	84	85	DIV SEK	None
GROUP RANK	30	27	33	29	27	26	40	63	60	BETA	0.87(6.00)
										2023 EMPLOYEES	1,100 (22%)

Overall good fundamental profile supported by double-digit three-year sales CAGR. Strong EPS growth in 2024

Good Up/Down Volume ratio and Acc/Dist Rating

The stock gapped up 12% post print and broke out of a stage-one cup base with a pivot of SEK 46.30

RS line is trending higher, with an RS Rating of 85 and an Acc/Dist Rating of A-



FINANCIALS	Apr 20	Jun 20	Sep 20	Dec 20	Mar 21	Jun 21	Sep 21	Dec 21	Mar 22	Jun 22	Sep 22	Dec 22	Mar 23	Jun 23	Sep 23	Dec 23	Mar 24	Jun 24	Sep 24	Dec 24	P/E
EPS (SEK)				1.79	0.20	-0.08	-0.01	0.05	0.14	0.26	-0.04	-0.49	0.13	0.07	0.19	-0.16	0.09	0.11	-0.05		2025 Est.: 37.4
EPS % CHANGE				+6,067%					-30%	+425%	-300%	-1,080%	-7%	-73%	+575%	+67%	-31%	+57%	-126%		2026 Est.:
SALES (MIL SEK)				747.4	442.5	400.0	422.9	493.3	712.0	702.6	752.9	825.5	986.6	932.8	939.5	946.0	1,030.1	1,047.1	1,003.5		5-yr High: 754
SALES % CHANGE				+188%					+61%	+76%	+78%	+67%	+39%	+33%	+25%	+15%	+4%	+12%	+7%		5-yr Low: 59
EPS % SURPRISE						-200.0%	+2.0%	-39.5%	-25.5%	+123.5%		-637.9%	-62.8%	+60.8%	+64.8%	-48.0%	-26.1%	+0.2%	-55.3%		vs Ind. Avg:
FUNDS						88	69	97	87	93	91	89	82	89	82	79	83	115	130		
SHARES HELD BY FUNDS						66M	70M	77M	76M	77M	84M	84M	78M	76M	64M	65M	66M	83M	91M		