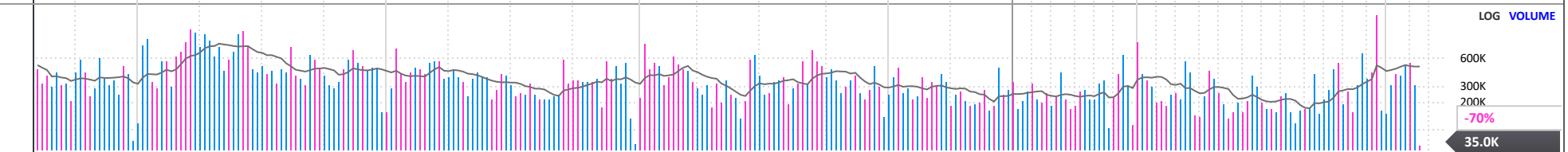
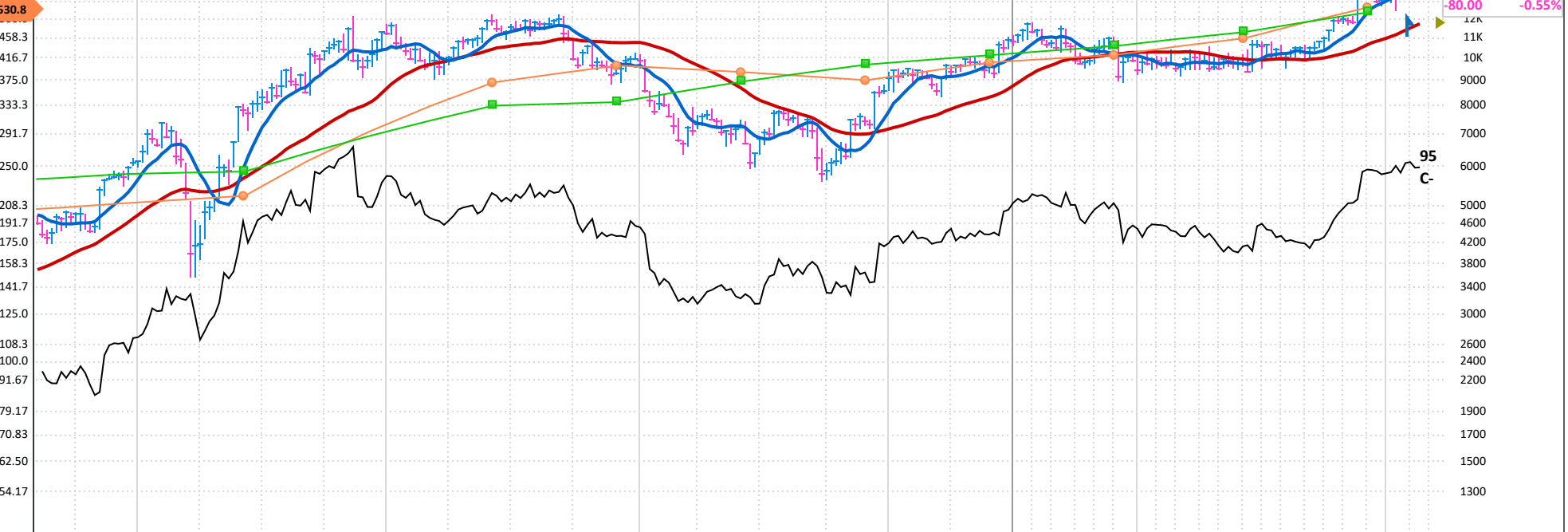


EPS 24x games-workshop.co.uk Lenton, UNITED KINGDOM Inc 1991 MGMT owns -- OH -2% LOG (Fixed) PRICE

Games Workshop Group Plc engages in the business of designing and manufacturing miniature figures and games. The firm also distributes products to retail stores, independent retailers, and online through global web stores. It operates under the Core and Licensing segments. The Core segment includes design, manufacture, and sales of fantasy miniatures. The Licensing segment focuses on the development of digital content for animation and TV. The company was founded in 1975 and is headquartered in Lenton, the United Kingdom. [LESS](#)

ANNUAL - MAY END	2016	2017	2018	2019	2020	2021	2022	2023	2024	2025 Estimate	2026 Estimate				
EPS GBX	42.10	95.10	184.31	202.91	218.70	372.71	391.31	409.66	458.78	503.47	10%				
CASH FLOW/SHR GBX	75.62	136.03	214.06	221.37	319.53	403.62	370.21	589.40	602.54	Earnings Growth Rate					
PRETAX MARGIN %	14%	24%	34%	32%	33%	41%	38%	36%	39%	2022-24	9% (5 Stability)				
RETURN ON EQUITY %	26%	53%	79%	69%	59%	74%	60%	57%	62%	2020-24	17% (12 Stability)				
SALES % CHANGE	-1%	34%	40%	16%	5%	37%	12%	14%	53K	COMP RATING	96				
SALES (MIL) GBX	12K	16K	22K	26K	27K	37K	41K	47K	53K	INV T/O	4.1x 73				
WEEKLY	Dec 27	Jan 3	Jan 10	Jan 17	Jan 24	Jan 31	Feb 7	Feb 14	Feb 17	DEBT %	2022-24				
DATAGRAPH RATING	74	76	75	77	78	78	79	78	78	TAX RATE	2022-24				
AVG DAILY VOL (000)	101	96	93	98	101	108	107	104	103	BACKLOG	2022-24				
UP/DOWN VOLUME	0.6	0.5	0.6	0.6	0.7	0.8	0.7	0.6	0.6	R & D	--				
ACCUM/DIST RATING	-28	-28	-25	-26	-11	-2	-13	-6	-6	DIV GBX	525.00 (3.6%)				
RELATIVE STRENGTH	92	93	93	92	93	94	94	95	95	BETA	1.16(16.00)				
GROUP RANK	6	6	3	3	4	4	5	6	5	2024 EMPLOYEES	2,950 (9%)				
											SMR RATING	A			
												BK VAL	19.10x '24		
													DIV GR RT	+31% (12)	
														ALPHA	0.11 (0.06)



FINANCIALS	20	May 20	Aug 20	Nov 20	Feb 21	May 21	Aug 21	Nov 21	Feb 22	May 22	Aug 22	Nov 22	Feb 23	May 23	Aug 23	Nov 23	Feb 24	May 24	Aug 24	Nov 24	Feb 25	P/E	27
EPS (GBX)		218.70				372.71		217.17		174.18		202.44		207.22		216.90		241.89		288.88		2025 Est.:	28.8
EPS % CHANGE						+70%						-7%		+19%		+7%		+17%		+33%		2026 Est.:	
SALES (MIL GBX)		26,970.0				36,950.0		19,150.0		22,330.0		22,660.0		24,420.0		24,770.0		27,800.0		29,950.0		5-yr High:	41
SALES % CHANGE						+37%						+18%		+9%		+9%		+14%		+21%		5-yr Low:	15
EPS % SURPRISE																						vs Ind. Avg.:	0.2x
FUNDS	2	359	403	441	483	448	437	417	422	423	414	434	462	483	513	536	514	529	520	545			
SHARES HELD BY FUNDS	M	16M	16M	16M	17M	17M	17M	17M	17M	18M	17M	18M	18M	18M	17M	18M	18M	18M	18M	18M			