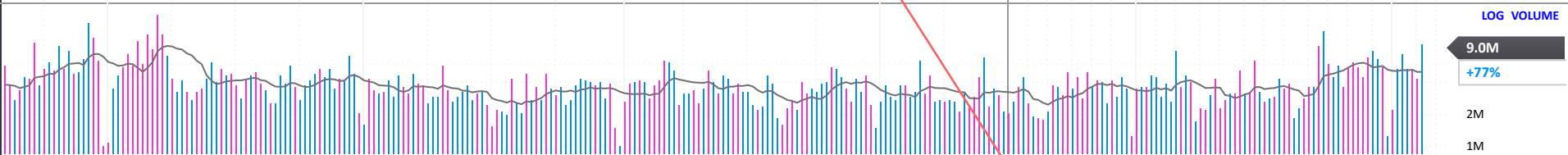
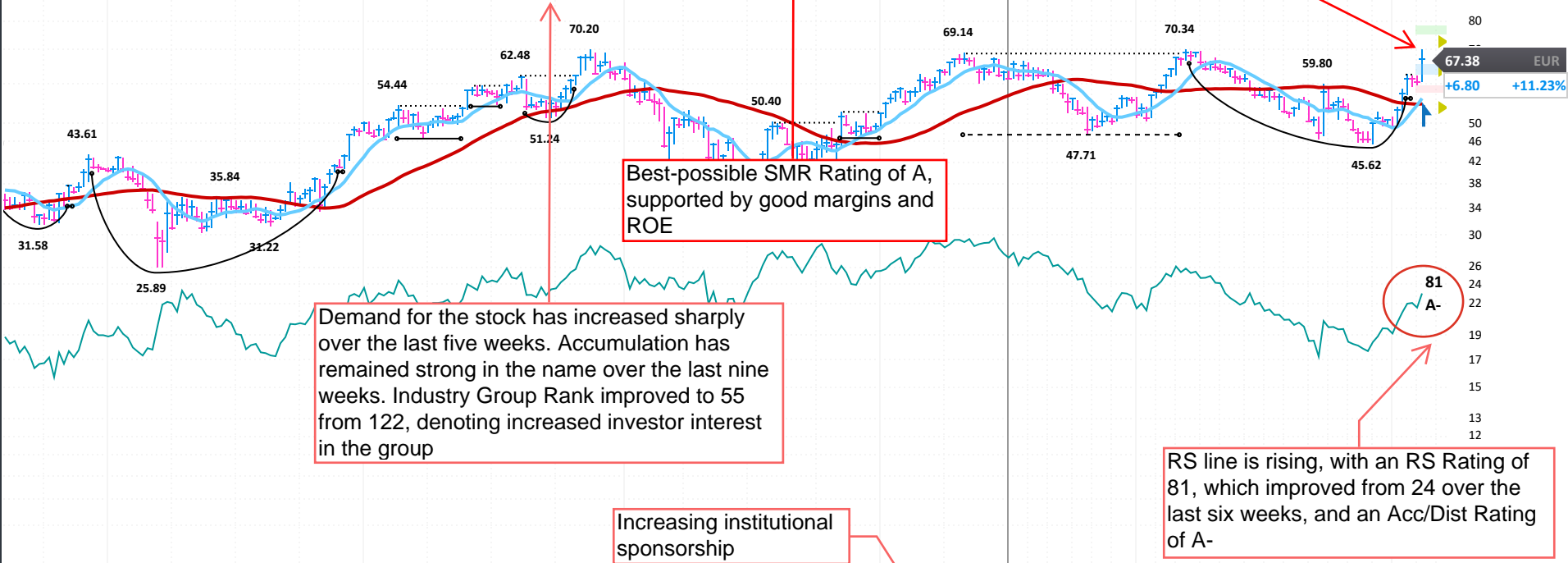


392422041 EPS Rank 63		monclergroup.com										Milan, ITALY Inc 1952				MGMT owns --		+7% from Pivot in 1 Week		OH -4% LOG (Fixed) PRICE				
Moncler SpA designs, produces and distributes clothing for men, women and children under the Moncler brand name. It directly produces and distributes its own clothing and accessories collections through direct boutiques and exclusive department and multiband stores around the world.																								
ANNUAL - DEC END		2016	2017	2018	2019	2020	2021	2022	2023	2024	2025 Estimate		2026 Estimate											
EPS EUR		0.79	0.99	1.32	1.42	1.19	1.48	2.26	2.27	2.36	2.46	4%												
CASH FLOW/SHR EUR		1.10	1.23	1.84	2.34	1.61	3.26	2.46	3.39				Earnings Growth Rate		Sales Growth Rate									
PRETAX MARGIN %		28%	28%	29%	29%	24%	27%	29%	29%	29%	12%	(8 Stability)	15%											
RETURN ON EQUITY %		31%	31%	33%	30%	21%	19%	23%	20%		18%	(12 Stability)	20%											
SALES % CHANGE		18%	15%	19%	15%	-12%	42%	27%	15%	4%			SMR RATING A											
SALES (MIL) EUR		1,040	1,194	1,420	1,628	1,440	2,046	2,603	2,984	3,109														
WEEKLY		Dec 20	Dec 27	Jan 3	Jan 10	Jan 17	Jan 24	Jan 31	Feb 7	Feb 14														
DATAGRAPH RATING		50	48	48	49	63	65	64	66	75			DEBT % 2022-24		25%		21%							
AVG DAILY VOL (000)		1,152	1,143	1,109	1,144	1,177	1,161	1,153	1,149	1,193			TAX RATE 2022-24		19%		30%							
UP/DOWN VOLUME		0.7	0.8	0.7	0.9	1.3	1.6	1.8	1.9	1.8			BACKLOG 2022-24		--		--							
ACCUM/DIST RATING		13	13	14	34	45	50	44	47	41			R & D		--		BK VAL 5.89x '24							
RELATIVE STRENGTH		37	25	24	33	52	65	68	65	81			DIV EUR		1.15 (1.7%)		DIV GR RT+56% (17)							
GROUP RANK		122	122	122	118	87	50	41	56	55			BETA		1.01(22.00)		ALPHA -0.01 (-0.01)							



FINANCIALS	Mar 20	Jun 20	Sep 20	Dec 20	Mar 21	Jun 21	Sep 21	Dec 21	Mar 22	Jun 22	Sep 22	Dec 22	Mar 23	Jun 23	Sep 23	Dec 23	Mar 24	Jun 24	Sep 24	Dec 24	P/E	29
EPS (EUR)		-0.13		1.31		0.19		1.27		0.79		1.47		0.54		1.73		0.67		1.70	2025 Est.:	27.4
EPS % CHANGE		-146%		+15%		+246%		-3%		+316%		+16%		-32%		+18%		+24%		-2%	2026 Est.:	48
SALES (MIL) EUR		403.3		1,037.1		621.8		1,424.3		918.4		1,684.5		1,136.6		1,847.6		1,230.2		1,878.8	5-yr High:	17
SALES % CHANGE		-29%		-2%		+54%		+37%		+48%		+18%		+24%		+10%		+8%		+2%	5-yr Low:	1.3x
EPS % SURPRISE		+251.4%		+29.0%				-0.1%				+23.0%		+12.8%		+25.3%		+14.7%		+13.8%		
MARGIN AFTER TAX		-7.8%		+32.0%		+8.1%		+24.1%		+23.0%		+23.5%		+12.8%		+25.3%		+14.7%		+24.4%		
FUNDS	1,101	1,094	1,097	1,150	1,216	1,283	1,287	1,351	1,365	1,436	1,453	1,533	1,554	1,727	1,684	1,652	1,651	1,694	1,720	1,730		