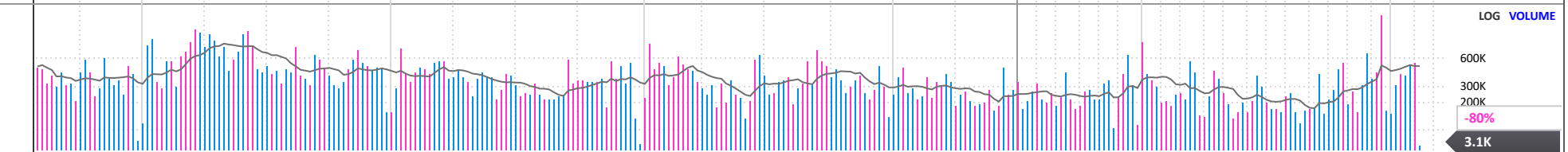
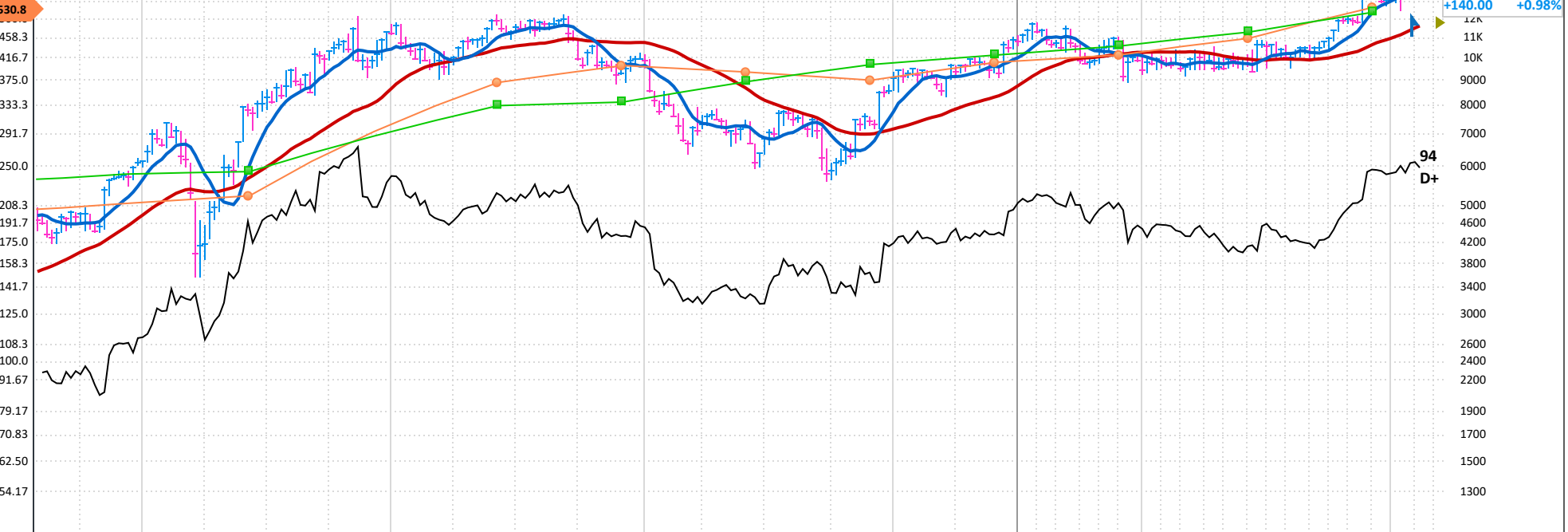


EPS 24x games-workshop.co.uk Lenton, UNITED KINGDOM Inc 1991 MGMT owns -- OH -2% LOG (Fixed) PRICE

Games Workshop Group Plc engages in the business of designing and manufacturing miniature figures and games. The firm also distributes products to retail stores, independent retailers, and online through global web stores. It operates under the Core and Licensing segments. The Core segment includes design, manufacture, and sales of fantasy miniatures. The Licensing segment focuses on the development of digital content for animation and TV. The company was founded in 1975 and is headquartered in Lenton, the United Kingdom. [LESS](#)

| ANNUAL - MAY END | 2016 | 2017 | 2018 | 2019 | 2020 | 2021 | 2022 | 2023 | 2024 | 2025 Estimate | 2026 Estimate |
|---------------------|--------|--------|--------|--------|--------|--------|--------|--------|--------|----------------------------|---------------|
| EPS GBX | 42.10 | 95.10 | 184.31 | 202.91 | 218.70 | 372.71 | 391.31 | 409.66 | 458.78 | 503.47 | 10% |
| CASH FLOW/SHR GBX | 75.62 | 136.03 | 214.06 | 221.37 | 319.53 | 403.62 | 370.21 | 589.40 | 602.54 | Earnings Growth Rate | |
| PRETAX MARGIN % | 14% | 24% | 34% | 32% | 33% | 41% | 38% | 36% | 39% | 2022-24 9% (5 Stability) | |
| RETURN ON EQUITY % | 26% | 53% | 79% | 69% | 59% | 74% | 60% | 57% | 62% | 2020-24 17% (12 Stability) | |
| SALES % CHANGE | -1% | 34% | 40% | 16% | 5% | 37% | 12% | 14% | 12% | COMP RATING 95 | |
| SALES (MIL) GBX | 12K | 16K | 22K | 26K | 27K | 37K | 41K | 47K | 53K | SMR RATING A | |
| WEEKLY | Dec 13 | Dec 20 | Dec 27 | Jan 3 | Jan 10 | Jan 17 | Jan 24 | Jan 31 | Feb 7 | 2024 EMPLOYEES 2,950 (9%) | |
| DATAGRAPH RATING | 74 | 77 | 74 | 76 | 75 | 77 | 78 | 78 | 79 | DEBT % 2022-24 17% | |
| AVG DAILY VOL (000) | 72 | 103 | 101 | 96 | 93 | 98 | 101 | 108 | 107 | TAX RATE 2022-24 18% | |
| UP/DOWN VOLUME | 1.5 | 0.7 | 0.6 | 0.5 | 0.6 | 0.6 | 0.7 | 0.8 | 0.7 | BACKLOG 2022-24 -- | |
| ACCUM/DIST RATING | 23 | -29 | -28 | -28 | -25 | -26 | -11 | -2 | -13 | R & D BK VAL 18.73x '24 | |
| RELATIVE STRENGTH | 94 | 92 | 92 | 93 | 93 | 92 | 93 | 94 | 94 | DIV GBX 525.00 (3.7%) | |
| GROUP RANK | 4 | 7 | 6 | 6 | 3 | 3 | 4 | 4 | 5 | BETA 1.16(16.00) | |
| | | | | | | | | | | ALPHA 0.10 (0.05) | |



| FINANCIALS | 20 | May 20 | Aug 20 | Nov 20 | Feb 21 | May 21 | Aug 21 | Nov 21 | Feb 22 | May 22 | Aug 22 | Nov 22 | Feb 23 | May 23 | Aug 23 | Nov 23 | Feb 24 | May 24 | Aug 24 | Nov 24 | Feb 25 | P/E | 27 |
|------------------------|-----|----------|--------|--------|--------|----------|--------|----------|--------|----------|--------|----------|--------|----------|----------|----------|----------|--------|--------|--------|--------|-----|-----------------|
| EPS (GBX) | | 218.70 | | | | 372.71 | | 217.17 | | 174.18 | | 202.44 | | 207.22 | 216.90 | 241.89 | 288.88 | | | | | | 2025 Est.: 28.7 |
| EPS % CHANGE | | | | | | +70% | | | | | | -7% | | +19% | | +7% | | +17% | | | | | 2026 Est.: 33% |
| SALES (MIL GBX) | | 26,970.0 | | | | 36,950.0 | | 19,150.0 | | 22,330.0 | | 22,660.0 | | 24,420.0 | 24,770.0 | 27,800.0 | 29,950.0 | | | | | | 5-yr High: 41 |
| SALES % CHANGE | | | | | | +37% | | | | | | +18% | | +9% | | +9% | | +14% | | | | | 5-yr Low: 15 |
| EPS % SURPRISE | | | | | | | | | | | | | | | | | | | | | | | vs Ind. Avg: |
| FUNDS | 22 | 359 | 403 | 441 | 483 | 448 | 437 | 417 | 422 | 423 | 414 | 434 | 462 | 483 | 513 | 536 | 514 | 529 | 519 | 539 | | | |
| SHARES HELD BY FUNDS/M | 16M | 16M | 16M | 16M | 17M | 17M | 17M | 17M | 17M | 18M | 17M | 18M | 18M | 18M | 17M | 18M | 18M | 18M | 18M | 18M | | | |