

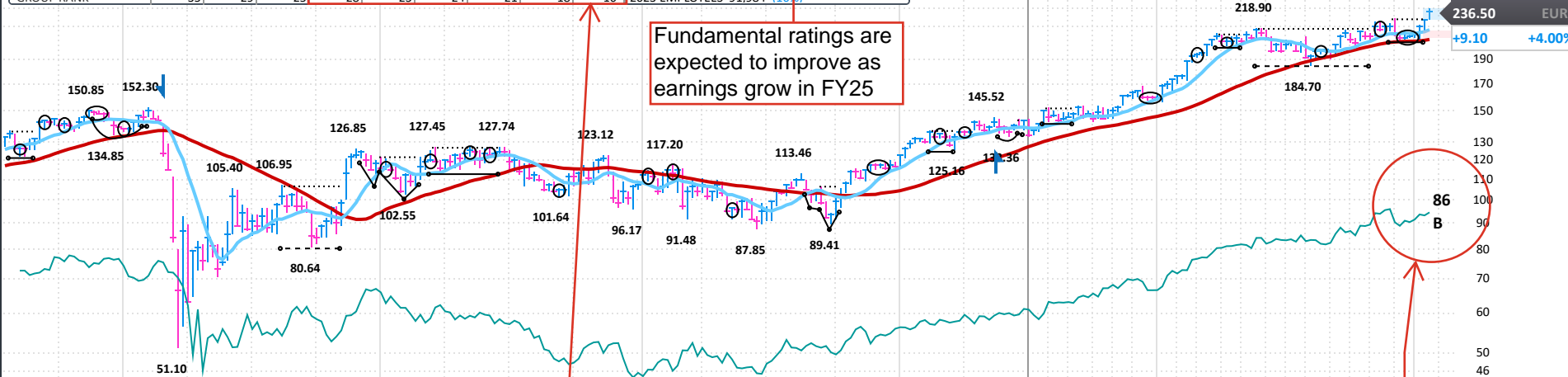
33140608080 safran-group.com Paris, FRANCE Inc 1956 MGMT owns -- +3% from Pivot in 1 Week Europe Long +64.40% in 88.3 WKS OH -1% LOG (Fixed) PRICE

Safran SA engages in the design, manufacture, and sale of aircraft, defense, and communication equipment and technologies. MORE

ANNUAL - DEC END	2015	2016	2017	2018	2019	2020	2021	2022	2023	2024 Estimate	2025 Estimate
EPS EUR	-2.03	4.58	9.06	2.98	5.69	0.83	0.10	-5.76	8.24	6.81	8.23
CASH FLOW/SHR EUR	6.32	5.86	6.59	7.04	7.23	4.24	5.54	8.31	9.90	6.81	8.23
PRETAX MARGIN %	-9%	13%	32%	6%	13%	2%	0%	-18%	18%	23%	23%
RETURN ON EQUITY %	-15%	30%	47%	12%	20%	3%	0%	-21%	31%	1%	1%
SALES % CHANGE	8%	2%	-1%	28%	19%	-34%	-9%	29%	21%	23%	21%
SALES (MIL) EUR	16K	16K	16K	21K	25K	17K	15K	20K	24K	24K	24K

WEEKLY	Nov 29	Dec 6	Dec 13	Dec 20	Dec 27	Jan 3	Jan 10	Jan 17	Jan 24
DATAGRAPH RATING	59	60	61	60	60	58	62	62	63
AVG DAILY VOL (000)	586	617	613	625	609	598	606	623	617
UP/DOWN VOLUME	0.9	0.9	1.0	1.0	1.0	1.0	1.1	1.1	1.2
ACCUM/DIST RATING	-18	-14	-27	-26	-26	-13	-5	16	22
RELATIVE STRENGTH	79	72	69	67	71	75	81	86	86
GROUP RANK	35	29	25	28	23	24	21	18	16

2022-24	2023-24	2024-25
Earnings Growth Rate	42%	55%
Sales Growth Rate	59%	21%
DEBT %	42%	55%
TAX RATE	2021-23	59%
BACKLOG	2021-23	---
R & D	5.10%	BK VAL 8.45x '23
DIV EUR	2.20 (0.9%)	DIV GR RT+87% (22)
BETA	0.97(35.00)	ALPHA 0.11 (0.08)
2023 EMPLOYEES	91,984	(10%)



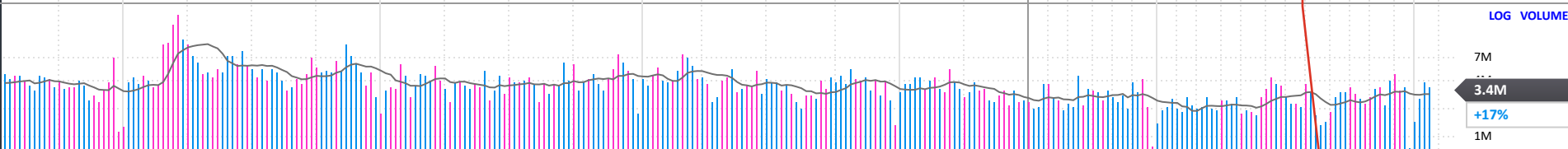
Fundamental ratings are expected to improve as earnings grow in FY25

Sharp improvement in technical ratings indicates money inflow and positive demand for the stock

The stock bounced off its 50-DMA and broke out of a stage-one seven-week flat base on above average volume to a new 52-week high. Actionable

RS line is in an uptrend, with a strong RS Rating of 86

Institutional sponsorship increased 8% y/y



FINANCIALS	Mar 20	Jun 20	Sep 20	Dec 20	Mar 21	Jun 21	Sep 21	Dec 21	Mar 22	Jun 22	Sep 22	Dec 22	Mar 23	Jun 23	Sep 23	Dec 23	Mar 24	Jun 24	Sep 24	Dec 24	P/E
EPS (EUR)		-0.80		1.62		1.58		-1.48		-8.81		3.07		4.43		3.81		0.13		3.40e	60
EPS % CHANGE		-124%		-32%		+297%		-191%		-658%		+307%		+150%		+24%		-97%		-11%	2024 Est.: 34.7
SALES (MIL EUR)		8,902.0		7,729.0		6,769.0		8,364.0		8,675.0		10,848.0		11,129.0		12,522.0		13,204.0		14,087.4e	2025 Est.: 28.7
SALES % CHANGE		-28%		-40%		-24%		+8%		+28%		+30%		+28%		+15%		+19%		+13%	5-yr High: 1K
EPS % SURPRISE		-20.0%		-28.2%		+114.0%		-43.6%		-17.1%		-37.8%		+6.6%		-23.7%		+47.3%		+0.4%	5-yr Low: 14
MARGIN AFTER TAX		-3.8%		+9.0%		+10.0%		-43.4%		-7.5%		+12.0%		+16.7%		+12.6%		+0.4%			vs Ind. Avg:
FUNDS	1,507	1,367	1,312	1,397	1,373	1,363	1,304	1,296	1,304	1,308	1,305	1,352	1,424	1,481	1,534	1,639	1,709	1,749	1,769		