

European Weekly Summary

Key points:

- **European indices continued their decline last week on the back of tepid economic sentiment in the region and tracking the global market weakness.** Austria and Germany are the only two major indices trading above their 50-DMA: 3–5% off 52-week highs. Belgium also remained constructive, just 3% away from the 52-week highs, but trading below a flattish 50-DMA. Most indices are trading below 200-DMA with weak technical setups. Denmark lagged the most, trading 32% off 52-week highs, after Novo Nordisk (NON.DK) dropped 20% following disappointing trial results of its latest weight-loss drug CagriSema. All sectors closed negative with Health Care and Basic Material dropping the most.
- **We are cautious on the European markets as most indices are trading below key moving averages with broken technical profiles.** Reduce exposure in ideas breaking support levels. Focus on O'Neil ideas within constructive geographies and emerging out from proper bases or holding short-term support levels.
 - **Sectors closed negative** last week declining >1.5%. Health Care (-4.4%), Basic Material (-3.9%), and Energy (-3.3%) lagged the most, while the rest declined between 1.5–2.5%. Cyclical (-1.6%), Retail (-1.8%), and Technology (-1.9%) outperformed on a relative basis.
 - **On our rotation graph**, sectoral performance was mostly negative. Financial and Capital Equipment are the only two sectors in the best quadrant. However, in the last two weeks, both the sectors are exhibiting lethargy. Technology and Utility took a pause while Cyclical and Basic Material exhibited some short-term positive momentum. Retail showed major weakness in the last week and moved out of the best quadrant. Consumer Staple, Transportation, and Health Care also continue to see deterioration in short-term momentum.
- **European Focus List Update:**
 - Actionable names include Lottomatica Group (LOTG.IT; LTMC:IM), Pandora (PND.DK; PNDORA:DC), Technogym (TGYM.IT; TGYM:IM), and Schneider Electric (QT@F.FR; SU:FP).
 - Addition: Pandora (PND.DK)
 - Removal: Mips (MIPS.SE)

Prepared by:
Tristan d'Aboville – Executive Director – Research Analyst,
tristan.daboville@williamoneil.com | Direct: +44 20 3178 7125 | Mobile: +44 77 0344 5260

European Weekly Summary

WILLIAM O'NEIL+CO.

Europe's main index gives up all its recent gains

- The Stoxx 600 dropped ~3.5% last week, trading well below 50- and 200-DMA. The index remained in a Rally Attempt and is testing support at the November low. With the Stoxx 600 extended to the downside from its support levels, we can expect a short-term rally to its support levels.
- Among the 16 indices we cover, eight indices are in a Rally Attempt, Germany is in an Uptrend Under Pressure, and seven indices are in a Downtrend.
- Seven indices, including Denmark, Spain, Sweden, and Switzerland were shifted to a Downtrend, while Germany was moved to an Uptrend Under Pressure.
- We are cautious on the European markets as most indices are trading below key moving averages with broken technical profile. Reduce exposure in ideas breaking support levels. Focus on O'Neil ideas within in constructive geographies and emerging out from proper bases or holding short-term support levels.

Sector Rotation:

- On our rotation graph, sectoral performance was mostly negative. Financial and Capital Equipment are the only two sectors in the best quadrant. However, in the last two weeks, both sectors are exhibiting lethargy.
- Technology and Utility took a pause while Consumer Cyclical and Basic Material exhibited some short-term positive momentum.
- Retail showed major weakness in the last week and moved out of the best quadrant. Consumer Staple, Transportation, and Health Care also continue to see deterioration in short-term momentum.

European Focus List

- **Addition: Pandora (PND.DK):** Pandora the world's largest vertically integrated jewelry manufacturer, operates in the affordable segment and is renowned for its charms and bracelets. The company sold 107M pieces of jewelry in 2023. It produces 95% of its product in-house and ~ 80% of its revenues come from its own DTC consumer channels. Growth is driven by its expansion into underpenetrated markets while broadening its product offerings into segments such as necklaces and earrings. The footprint growth is supported by excellent unit economics.
- **Removal: Mips (MIPS.SE):** We removed Mips from our Developed and European Markets Focus Lists on technical deterioration. The stock declined 3.5% after facing resistance at its 21-DMA as it continues to struggle to reclaim its near-term moving averages.

Sector Heat Map: Average Perf. - Market Cap Average Weighted

(Market Cap > \$1BN & ADV > \$1M)

Sectors	5 Di	4 We	8 We	13 We	26 We	52 We
Consumer Cyclical	-1.6%	5.7%	1.2%	5.3%	-2.9%	0.6%
Retail	-1.8%	-1.9%	-1.6%	1.5%	5.4%	13.5%
Technology	-1.9%	2.3%	0.6%	4.0%	1.7%	18.5%
Utility	-2.2%	-4.1%	-6.5%	-6.2%	1.4%	-2.5%
Capital Equipment	-2.3%	-0.1%	0.4%	3.0%	4.8%	25.7%
Transportation	-2.5%	0.1%	-0.1%	3.3%	9.1%	5.8%
Consumer Staple	-2.5%	-1.5%	-6.4%	-5.9%	-7.5%	-6.0%
Financial	-2.6%	0.6%	0.9%	1.4%	7.4%	19.1%
Energy	-3.3%	-7.3%	-9.2%	-9.2%	-14.3%	-12.3%
Basic Material	-3.9%	-3.3%	-6.1%	-4.2%	-7.1%	-4.7%
Health Care	-4.4%	-5.3%	-10.7%	-10.7%	-7.2%	4.4%

Source: William O'Neil + Co.

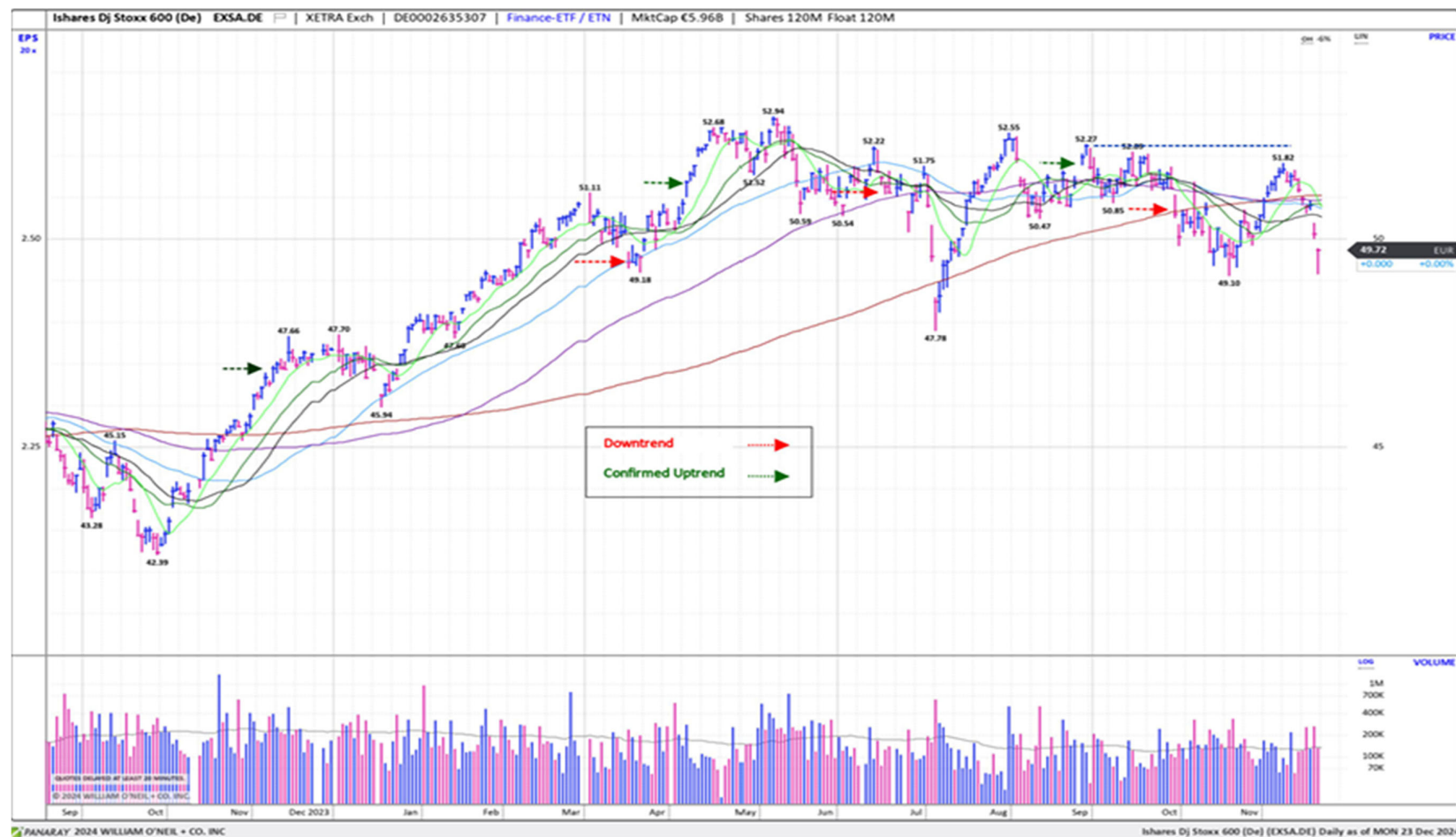
Market Condition

O'Neil Methodology

Country	Market Condition	Distribution Days
France	Rally Attempt	N/A
Germany	Under Pressure	4
UK	Rally Attempt	N/A
Stoxx600	Rally Attempt	N/A
Denmark	Correction	N/A
Ireland	Rally Attempt	N/A
Finland	Correction	N/A
Norway	Correction	N/A
Sweden	Correction	N/A
Switzerland	Correction	N/A
Austria	Rally Attempt	N/A
Italy	Rally Attempt	N/A
Portugal	Correction	N/A
Spain	Correction	N/A
Belgium	Rally Attempt	N/A
Netherlands	Rally Attempt	N/A
All Europe (Average)		4.0

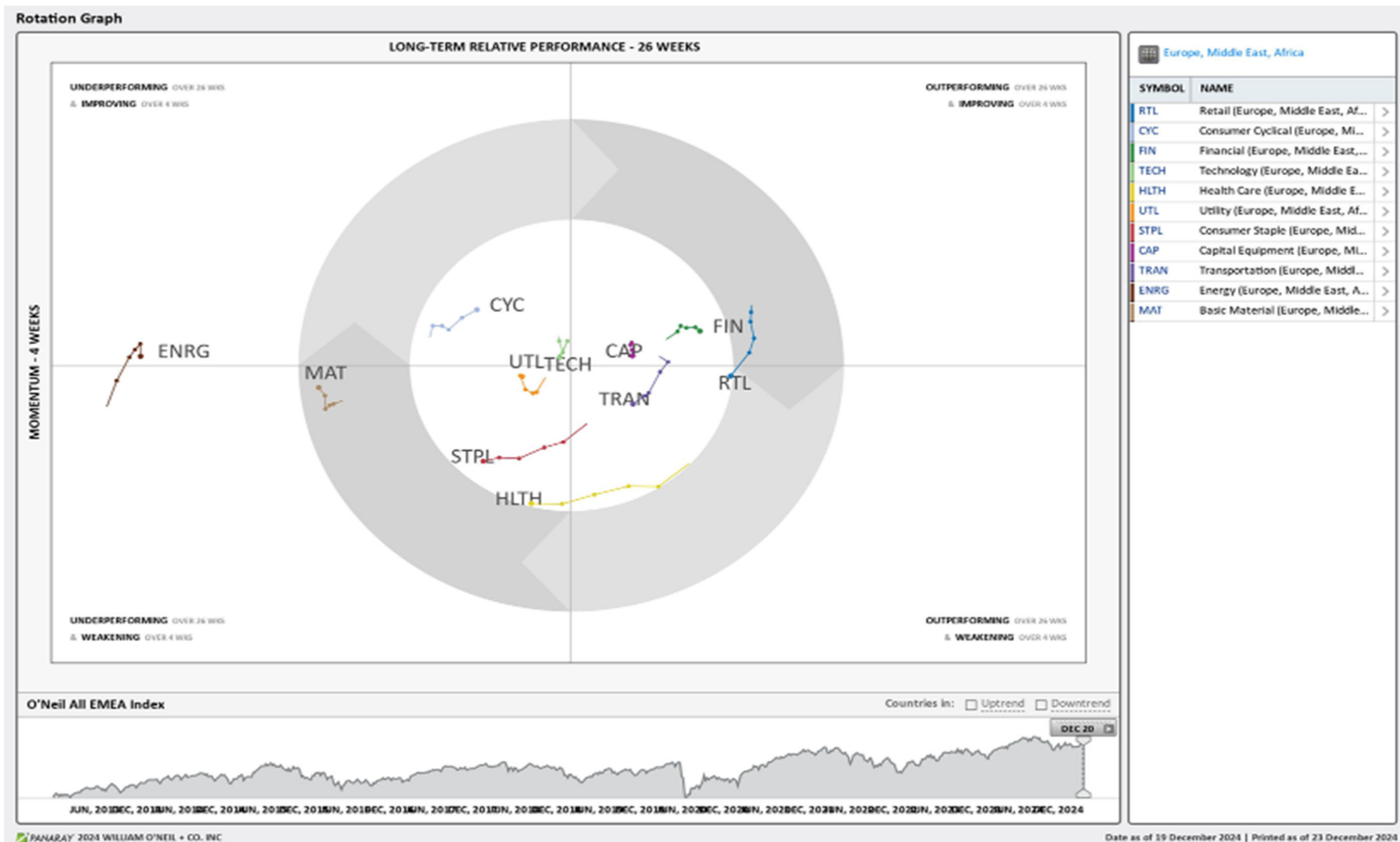
Source: William O'Neil + Co.

iShares Dj Stoxx 600 (EXSA.DE) – Daily Datagraph®



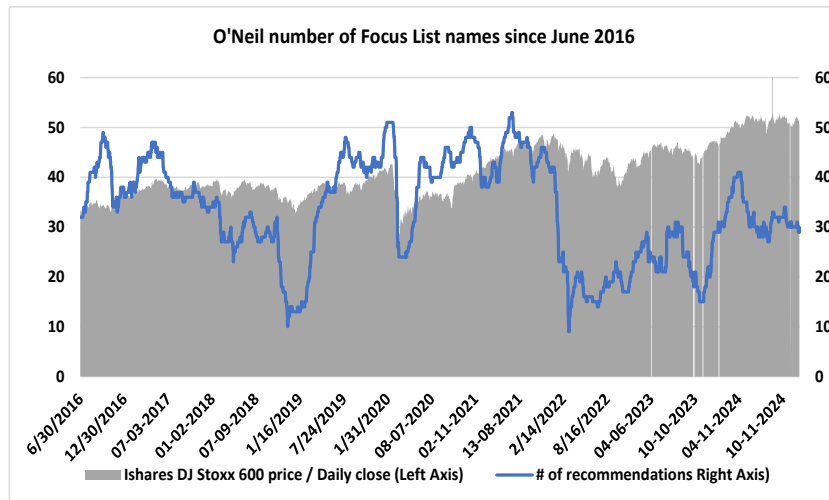
Source: William O'Neil + Co.

EMEA Rotation Chart

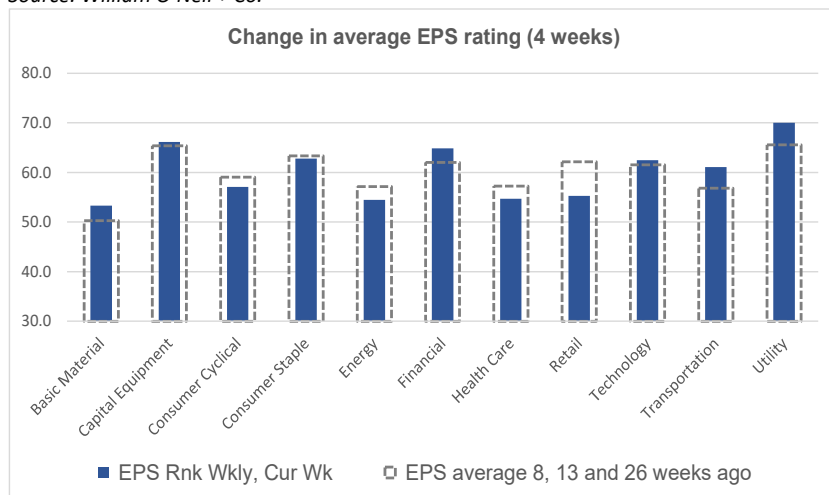


Source: William O'Neil + Co.

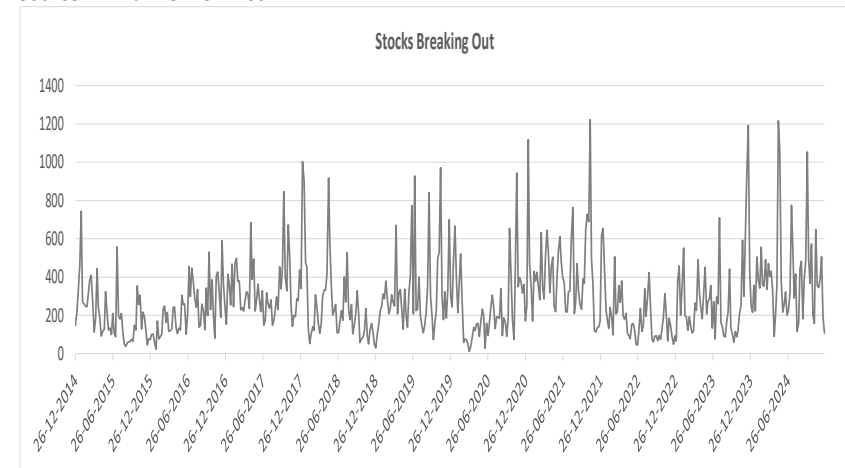
Key Metrics Change: EPS, RS, # of EFL names & Breakouts



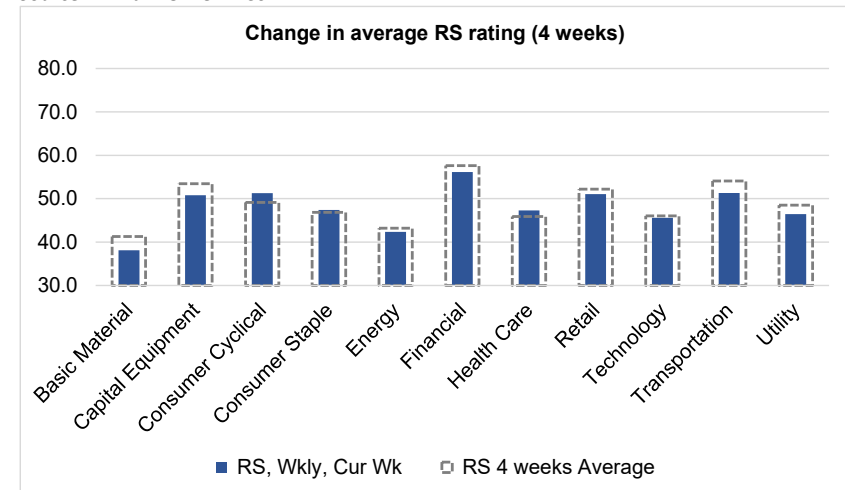
Source: William O'Neil + Co.



Source: William O'Neil + Co.



Source: William O'Neil + Co.



Source: William O'Neil + Co.

How To Read The Sector Card

European Focus List

O'Neil Recommendations

The **European Focus List (EFL)** is a proprietary list of long ideas that fit the fundamental and technical criteria of the O'Neil Methodology.

Outperforming

Stocks breaking out from pivot

We recommend buying stocks at the **breakout level**. A breakout is a price movement of the security through an identified level of resistance (pivot point) after forming a consolidation base. Our proprietary chart patterns are based on over 50 years of our active research into the behavior of equities.

Laggards

Stocks in which investors are losing interest

Laggards are stocks showing technical weakness. We believe these stocks are laggards relative to their own domestic markets and, if owned, need to be reviewed carefully as they may be vulnerable to further downside risk and underperformance.

Top Rated

Stocks displaying the best Composite rating

The **Composite Rating** combines the EPS Rank, Relative Strength Rating, Industry Group Rank, SMR Rating, Accumulation/Distribution Rating, and the stock's percent off its 52-week high. More weight is placed on EPS Rank and Relative Strength Ratings. The resulting rating of technical and fundamental factors is compared against all other stocks in the trading country and assigned a rating from 1 to 99, with 99 being the best. A rating of 90 means the stock has outperformed 90% of all other stocks.

Early Basing

Stocks trading near pivot on improving technical characteristics

Stock near pivot point (last line of resistance) with improving technical characteristics and above average fundamental profile based on O'Neil proprietary ratings and rankings.

European Weekly Summary

WILLIAM **O'NEIL**+CO.

Basic Material

European Focus List

O'Neil recommendations

Symbol	Name	Mkt Val, USD (Mil)	Focus List Since
--------	------	-----------------------	------------------

Breaking Out This Week

Stocks breaking out from consolidation

Symbol	Name	Mkt Val, USD (Mil)	Composite Rating
--------	------	-----------------------	------------------

Laggards

Stocks showing technical weakness

Symbol	Name	Mkt Val, USD (Mil)	A/D, Nbr Rtg, Cur Wk
SIKACH	Sika	38,314	-55
COR.PT	Corticeira Amorim	1,106	-50
METB.FI	Metsa Board B	1,379	-39
CLN.CH	Clariant	3,669	-35
WCHX.DE	Wacker Chemie (Xet)	3,673	-34
SY1X.DE	Symrise (Xet)	14,818	-33
OUTO.FI	Outokumpu 'A'	1,330	-30
EMSN.CH	Ems-Chemie 'N'	15,938	-27

Top Rated

Stocks displaying the best Composite rating

Symbol	Name	Mkt Val, USD (Mil)	Composite Rating
CEM.IT	Cementir Holding	1,786	93
BOL.SE	Boliden Ord Shs	7,585	89
VCT.FR	Vicat	1,681	89
ALTR.PT	Altri Sgps	1,113	89
HOC.GB	Hochschild Mining	1,374	88
FRES.GB	Fresnillo	5,901	84
SOL.IT	Sol	3,458	84
NA.SE	Nolato B	1,196	84
ALLM.SE	Alleima	1,676	83
ROBT.FR	Robertet	1,920	81
HOLN.CH	Holcim	55,837	79
HEN3X.DE	Henkel Pref. (Xet)	15,627	77
HENX.DE	Henkel (Xet)	20,078	75
TEN.IT	Tenaris	21,768	74
HILS.GB	Hill & Smith Plc	1,897	73

Basing

Stocks trading near pivot on improving technical characteristics

Symbol	Name	Mkt Val, USD (Mil)	Composite Rating
--------	------	--------------------	------------------

European Weekly Summary

WILLIAM O'NEIL+CO.

Capital Equipment

European Focus List

O'Neil recommendations

Symbol	Name	Mkt Val, USD (Mil)	Focus List Since
QT@F.FR	Schneider Electric	1,43,938	12-6-24
SGM.FR	Safran	93,580	17-5-23
REL.GB	Relx	84,702	4-8-22
RR.GB	Rolls-Royce Holdings	61,370	15-11-23
RHMX.DE	Rheinmetall (Xet)	27,785	19-11-24
ALF.SE	Alfa Laval	17,437	20-3-24

Breaking Out This Week

Stocks breaking out from consolidation

Symbol	Name	Mkt Val, USD (Mil)	Composite Rating
--------	------	--------------------	------------------

Laggards

Stocks showing technical weakness

Symbol	Name	Mkt Val, USD (Mil)	A/D, Nmbr Rtg, Cur Wk
ABF.GB	Associated Brit.Foods	18,904	-63
PAGE.GB	Pagegroup	1,373	-44
DG@F.FR	Vinci	60,281	-42
SR@G.SE	Atlas Copco A	51,760	-40
ACBF.SE	Atlas Copco B	21,191	-40
ADEN.CH	Adecco Group	4,134	-38
SAND.SE	Sandvik	22,623	-37
SAXX.DE	Stroeer (Xet)	2,700	-33
INRN.CH	Interroll	1,876	-33
LAND.CH	Landis+gyr Group	1,800	-31
ENT.FR	Bouygues	11,142	-30
ANA.ES	Acciona	6,231	-26

Top Rated

Stocks displaying the best Composite rating

Symbol	Name	Mkt Val, USD (Mil)	Composite Rating
KOG.NO	Kongsberg Gruppen	19,722	99
LAGR.SE	Lagercrantz Group B	3,805	99
MT.IT	Marie	2,788	99
RHMX.DE	Rheinmetall (Xet)	27,785	98
HOTX.DE	Hochtief (Xet)	10,350	98
DOKA.CH	Dorma Kaba Hold	3,071	98
PER.DK	Per Aarsleff Holding B	1,304	98
SAAB.SE	Saab B	10,949	97
SUBF.SE	Securitas B	6,810	97
TECE.FR	Technip Energies	4,807	97
KCR1.FI	Konecranes	5,127	96
MYCR.SE	Mycronic	3,537	96
IPG.IT	Webuild	3,016	96
LDO.IT	Leonardo	15,406	95
HLMA.GB	Halma	12,974	95

Basing

Stocks trading near pivot on improving technical characteristics

Symbol	Name	Mkt Val, USD (Mil)	Composite Rating
MT.IT	Marie	2,788	99
MGNS.GB	Morgan Sindall Group	2,331	94
BAM.NL	Bam Groep Kon.	1,275	93

European Weekly Summary

WILLIAM O'NEIL+CO.

Consumer Cyclical

European Focus List

O'Neil recommendations

Symbol	Name	Mkt Val, USD (Mil)	Focus List Since
ADXS.DE	Adidas (Xet)	44,380	20-11-23
LOTG.IT	Lottomatica Group	3,317	12-7-24
TGYM.IT	Technogym	2,198	13-2-24

Breaking Out This Week

Stocks breaking out from consolidation

Symbol	Name	Mkt Val, USD (Mil)	Composite Rating
FRAX.DE	Fraport (Xet)	5,623	88
EX@F.FR	Vivendi	2,696	77

Laggards

Stocks showing technical weakness

Symbol	Name	Mkt Val, USD (Mil)	A/D, Nmbr Rtg, Cur Wk
BKG.GB	Berkeley Group Hdg.(The)	4,962	-55
MMT.FR	M6-Metropole Tv	1,448	-54
DOMT.SE	Dometic Group	1,519	-35
A3MES	Atresmedia Corp	1,022	-33
AML.GB	Aston Martin Lagonda Glo	1,230	-27
NOKT.FI	Nokian Renkaat	1,048	-27
DAE.CH	Daetwyler 'I'	1,879	-26

Top Rated

Stocks displaying the best Composite rating

Symbol	Name	Mkt Val, USD (Mil)	Composite Rating
TRN.GB	Trainline Plc.	2,426	99
C5H.IE	Cairn Homes (Dub)	1,522	99
DOC.AT	Do Co Rest.Cater.	2,060	98
FAN.GB	Volution Group	1,376	98
TIFS.GB	Ti Fluid Systems Plc	1,202	98
CCL.GB	Carnival	3,408	97
HOME.ES	Neinor Homes	1,264	97
MIPS.SE	Mips	1,106	97
AC.FR	Accor	11,843	96
COA.GB	Coats Group	1,876	96
BETS.SE	Betsson B	1,586	96
RMS.FR	Hermes Intl.	2,53,683	95
GAW.GB	Games Workshop	5,375	95
ADSH.ES	Aedas Homes	1,112	95
LFDJ.FR	La Francaise Des Jeux	7,134	94

Basing

Stocks trading near pivot on improving technical characteristics

Symbol	Name	Mkt Val, USD (Mil)	Composite Rating
RMS.FR	Hermes Intl.	2,53,683	95
RWAY.IT	Rai Way	1,521	73

European Weekly Summary

WILLIAM **O'NEIL**+CO.

Consumer Staples

European Focus List

O'Neil recommendations

Symbol	Name	Mkt Val, USD (Mil)	Focus List Since
GALD.CH	Galderma Group N	25,841	21-8-24
PFD.GB	Premier Foods	2,074	10-7-24

Breaking Out This Week

Stocks breaking out from consolidation

Symbol	Name	Mkt Val, USD (Mil)	Composite Rating
--------	------	--------------------	------------------

Laggards

Stocks showing technical weakness

Symbol	Name	Mkt Val, USD (Mil)	A/D, Nmbr	Rtg, Cur Wk
SZUX.DE	Suedzucker (Xet)	2,183		-47
EMMN.CH	Emmi Ag	4,403		-41
HB.NL	Heineken	41,043		-40
NESN.CH	Nestle 'N'	2,17,052		-39
LISP.CH	Choc.Lindt & Spruengli Pa	10,959		-36
DSFR.NL	Dsm Firmenich	27,122		-32

Top Rated

Stocks displaying the best Composite rating

Symbol	Name	Mkt Val, USD (Mil)	Composite Rating
GALD.CH	Galderma Group N	25,841	97
LBAK.BE	Lotus Bakeries	9,225	96
AAK.SE	Aak	7,433	94
IMB.GB	Imperial Brands	27,048	92
GNC.GB	Greencore Group	1,133	92
BVIC.GB	Britvic	4,073	88
HFG.GB	Hilton Food Group	1,030	88
BAKK.GB	Bakkavor Group Plc	1,059	87
ESSI.SE	Essity B	17,087	86
EVA.ES	Ebro Foods	2,548	85
AUSS.NO	Austevoll Seafood	1,727	85
PFD.GB	Premier Foods	2,074	82
MHG.NO	Mowi	8,929	81
CWK.GB	Cranswick	3,351	81
BSN.FR	Danone	45,417	80

Basing

Stocks trading near pivot on improving technical characteristics

Symbol	Name	Mkt Val, USD (Mil)	Composite Rating
AAK.SE	Aak	7,433	94

European Weekly Summary

WILLIAM O'NEIL+CO.

Energy

European Focus List

O'Neil recommendations

Symbol	Name	Mkt Val, USD (Mil)	Focus List Since
--------	------	-----------------------	------------------

Breaking Out This Week

Stocks breaking out from consolidation

Symbol	Name	Mkt Val, USD (Mil)	Composite Rating
--------	------	-----------------------	------------------

Laggards

Stocks showing technical weakness

Symbol	Name	Mkt Val, USD (Mil)	A/D, Nmbr	Rtg, Cur	Wk
FP.FR	Totalenergies	1,29,762			-55
ENI.IT	Eni	43,588			-44
NEST.FI	Neste	9,005			-44
TRIG.GB	The Renewables Infr.Gp.	2,582			-41
SEMES	Solaria Energia Y Medio A	1,047			-40
VEW.DK	Vestas Windsystems	13,327			-37
REP.ES	Repsol Ypf	13,526			-32
OMV.AT	Omv	12,411			-31
SHEL.GB	Shell (Lon)	1,83,915			-27
BP.GB	Bp	76,911			-27

Top Rated

Stocks displaying the best Composite rating

Symbol	Name	Mkt Val, USD (Mil)	Composite Rating
SPM.IT	Saipem	5,166	96
GTT.FR	Gtt	4,998	95
DEMG.BE	Deme Group	3,606	91
SEPL.GB	Seplat Ptl.Dev. (Lon) (Di)	1,476	90
MAU.FR	Maurel Et Prom	1,089	87
NEOP.FR	Neoen	6,307	85
SUBC.NO	Subsea 7	4,661	83
VL.R.FR	Vallourec	3,915	82
ENOG.GB	Energear plc	2,253	80
SBMO.NL	Sbm Offshore	3,090	78
VPK.NL	Koninklijke Vopak	5,163	76
TGS.NO	Tgs	1,906	76
NOE.NO	Bluenord	1,442	74
VARE.NO	Var Energi	7,500	73
IPCO.SE	International Petroleum	1,276	65

Basing

Stocks trading near pivot on improving technical characteristics

Symbol	Name	Mkt Val, USD (Mil)	Composite Rating
--------	------	--------------------	------------------

European Weekly Summary

WILLIAM O'NEIL+CO.

Financial

European Focus List

O'Neil recommendations

Symbol	Name	Mkt Val, USD (Mil)	Focus List Since
ADYE.NL	Adyen	47,309	10-12-24
III.GB	3i Group	43,311	22-8-24
EQT.SE	Eqt	34,284	22-2-24
TLXX.DE	Talanx Aktgsf. (Xet)	21,519	15-11-24
BP.IT	Banco Bpm	12,143	14-11-24
BWGP.AT	Bawag Group	6,517	18-11-24
SQN.CH	Swissquote 'R'	5,791	16-1-24

Breaking Out This Week

Stocks breaking out from consolidation

Symbol	Name	Mkt Val, USD (Mil)	Composite Rating
WISE.GB	WISE A	13,330	99
SREF.CH	Swissinvest Real Estate I	1,319	-

Laggards

Stocks showing technical weakness

Symbol	Name	Mkt Val, USD (Mil)	A/D, Nmbr	Rtg, Cur Wk
AV.GB	Aviva	15,353		-65
ARG.FR	Argan	1,576		-42
ITM.IT	Italmobiliare	1,139		-36
VGP.BE	Vgp	1,990		-35
WKP.GB	Workspace Group	1,199		-32
COFN.BE	Cofinimmo	2,118		-31
RAT.GB	Rathbones Group	1,895		-28
SHC.GB	Shaftesbury Capital	3,050		-27
HYQX.DE	Hypoport Finance (Xet)	1,226		-26

Top Rated

Stocks displaying the best Composite rating

Symbol	Name	Mkt Val, USD (Mil)	Composite Rating
ADYE.NL	Adyen	47,309	99
WISE.GB	WISE A	13,330	99
SQN.CH	Swissquote 'R'	5,791	99
QLT.GB	Quilter	2,676	99
TCAP.GB	Tp Icap	2,457	99
ANI.IT	Anima Holding	2,185	99
FLOW.NL	Flow Traders	1,052	99
VZN.CH	Vz Holding 'N'	6,316	98
IGG.GB	Ig Group Holdings	4,343	98
BGEO.GB	Bank of Georgia Group	2,607	98
TBCG.GB	Tbc Bank Group	2,185	98
MING.NO	Sparebank 1 Smn Ords	2,145	98
SVEG.NO	Sparebanken Vest	1,337	98
ALPH.GB	Alpha Group Plc	1,178	98
NWG.GB	Natwest Group	39,895	97

Basing

Stocks trading near pivot on improving technical characteristics

Symbol	Name	Mkt Val, USD (Mil)	Composite Rating
EFGN.CH	Efg International N	4,448	97
WNST.AT	Vienna Insurance Group /	4,018	78
AZA.SE	Avanza Bank Holding	3,818	95
SYD.DK	Sydbank	2,742	90
SPHD.NO	Sparebank 1 Ostlandet	1,847	97

European Weekly Summary

WILLIAM O'NEIL+CO.

Healthcare

European Focus List

O'Neil recommendations

Symbol	Name	Mkt Val, USD (Mil)	Focus List Since
SOBI.SE	Swedish Orphan Biovitrum	10,015	19-8-24
HLB.DK	H Lundbeck B	4,489	28-6-24
VITR.SE	Vitrolife	2,553	23-7-24
VIMG.SE	Vimian Group	1,976	16-8-24

Breaking Out This Week

Stocks breaking out from consolidation

Symbol	Name	Mkt Val, USD (Mil)	Composite Rating
--------	------	--------------------	------------------

Laggards

Stocks showing technical weakness

Symbol	Name	Mkt Val, USD (Mil)	A/D, Nmbr	Rtg, Cur Wk
GXIX.DE	Gerresheimer (Xet)	2,437		-52
AFX.DE	Carl Zeiss Meditec (Xet)	4,272		-45
NOVN.CH	Novartis 'R'	2,12,666		-44
SN.GB	Smith & Nephew	10,667		-43
GSK.GB	Gsk	68,618		-42
BANB.CH	Bachem Holding	4,796		-37
BAYN.DE	Bayer (Xet)	19,403		-31
DESN.CH	Dottikon Es Holding	3,394		-31
AZN.GB	Astrazeneca	1,99,397		-29
STMN.CH	Straumann Hldg.	20,329		-28

Top Rated

Stocks displaying the best Composite rating

Symbol	Name	Mkt Val, USD (Mil)	Composite Rating
ALK.DK	Alk-Abello B	4,569	99
XVIV.SE	Xvivo Perfusion	1,332	98
ORNB.FI	Orion B	4,832	96
SOBI.SE	Swedish Orphan Biovitrum	10,015	95
BPHG.SE	Bonesupport Holding	2,278	93
CHM.DK	Chemometec	1,195	92
HLN.GB	Haleon	43,269	91
BIM.FR	Biomerieux	12,616	91
TERA.FI	Terveystalo	1,375	90
ARGX.BE	Argenx	38,067	89
OSS.DK	Embla Medical	2,063	89
FAGR.BE	Fagron	1,384	88
SDZ.CH	Sandoz Group	18,300	87
IPN.FR	Ipsen	9,441	85
HIK.GB	Hikma Pharmaceuticals	5,434	85

Basing

Stocks trading near pivot on improving technical characteristics

Symbol	Name	Mkt Val, USD (Mil)	Composite Rating
CHM.DK	Chemometec	1,195	92

European Weekly Summary

WILLIAM **O'NEIL**+CO.

Retail

European Focus List

O'Neil recommendations

Symbol	Name	Mkt Val, USD (Mil)	Focus List Since
PND.DK	Pandora	14,614	18-12-24

Breaking Out This Week

Stocks breaking out from consolidation

Symbol	Name	Mkt Val, USD (Mil)	Composite Rating
--------	------	-----------------------	------------------

Laggards

Stocks showing technical weakness

Symbol	Name	Mkt Val, USD (Mil)	A/D, Nmbr	Rtg, Cur	Wk
FRAS.GB	Fraser's Group	3,538			-45
JD.GB	Jd Sports Fashion	6,175			-40
DNLM.GB	Dunelm Group	2,698			-40
OCDO.GB	Ocado Group	3,187			-31
SON.PT	Sonae Sgps	1,877			-31

Top Rated

Stocks displaying the best Composite rating

Symbol	Name	Mkt Val, USD (Mil)	Composite Rating
EI.FR	Essilorluxottica	1,10,321	99
CLAS.SE	Clas Ohlson B	1,148	98
PND.DK	Pandora	14,614	96
MKS.GB	Marks & Spencer Group	9,760	96
ZALX.DE	Zalando (Xet)	9,081	96
CPG.GB	Compass Group	56,362	94
TSCO.GB	Tesco	30,993	94
BC.IT	Brunello Cucinelli	7,447	93
FDR.ES	Fluidra	4,809	90
SSPG.GB	Ssp Group	1,769	90
ELPB.SE	Electrolux Professional B	1,739	89
WOSG.GB	Watches of Switzerland C	1,707	89
IND.ES	Inditex	1,62,724	88
YOUX.DE	About Your Holding	1,264	87
NXT.GB	Next	15,301	83

Basing

Stocks trading near pivot on improving technical characteristics

Symbol	Name	Mkt Val, USD (Mil)	Composite Rating
BC.IT	Brunello Cucinelli	7,447	93

European Weekly Summary

WILLIAM O'NEIL+CO.

Technology

European Focus List

O'Neil recommendations

Symbol	Name	Mkt Val, USD (Mil)	Focus List Since
NEMX.DE	Nemetschek (Xet)	11,233	15-11-23
NGP.DK	Netcompany Group	2,325	12-11-24

Breaking Out This Week

Stocks breaking out from consolidation

Symbol	Name	Mkt Val, USD (Mil)	Composite Rating
RPI.GB	Raspberry Pi Holdings	1,426	90
NXUX.DE	Nexus (Xet)	1,259	96

Laggards

Stocks showing technical weakness

Symbol	Name	Mkt Val, USD (Mil)	A/D, Nmbr	Rtg, Cur Wk
ETL.FR	Eutelsat Communications	1,223		-62
SESG.FR	Ses Fdr	1,372		-51
CCC.GB	Computacenter	2,779		-49
WAVE.FR	Wavestone	1,039		-49
QTGR.FI	Qt Group	1,773		-39
MONY.GB	Mony Group	1,282		-34
CAP.FR	Capgemini	27,949		-31
ORA.FR	Orange	26,201		-31
SXS.GB	Spectris	3,039		-26
IDR.ES	Indra Sistemas	3,018		-26

Top Rated

Stocks displaying the best Composite rating

Symbol	Name	Mkt Val, USD (Mil)	Composite Rating
BCG.GB	Baltic Classifieds Grp	1,929	99
VITB.SE	Vitec Software Group B	1,796	99
TRST.GB	Trustpilot Group	1,597	99
FORT.SE	Fortnox Ab	4,026	98
AG1X.DE	Auto1 Grp (Xet)	3,581	98
ALEK.FR	Esker	1,656	98
TRB.SE	Truecaller B	1,367	98
PROS.NL	Prosus N	1,03,416	97
SGE.GB	Sage Group	16,301	97
HEMN.SE	Hemnet Group	2,730	97
REY.IT	Reply	6,048	96
NXUX.DE	Nexus (Xet)	1,259	96
SETB.SE	Sectra B	4,507	94
ACQB.SE	Yubico	1,884	94
SAPX.DE	Sap (Xet)	3,03,346	93

Basing

Stocks trading near pivot on improving technical characteristics

Symbol	Name	Mkt Val, USD (Mil)	Composite Rating
VITB.SE	Vitec Software Group B	1,796	99

European Weekly Summary

WILLIAM O'NEIL+CO.

Transportation

European Focus List

O'Neil recommendations

Symbol	Name	Mkt Val, USD (Mil)	Focus List Since
DSV.DK	Dsv	50,668	16-10-24
INPW.NL	Inpost	8,427	16-5-24

Breaking Out This Week

Stocks breaking out from consolidation

Symbol	Name	Mkt Val, USD (Mil)	Composite Rating
--------	------	--------------------	------------------

Laggards

Stocks showing technical weakness

Symbol	Name	Mkt Val, USD (Mil)	A/D, Nmbr Rtg, Cur Wk
DHLX.DE	Deutsche Post (Xet)	42,103	-49
SRAIL.CH	Stadler Rail	2,193	-43
KNIN.CH	Kuehne Und Nagel Internæ	27,383	-36
DFD.DK	Dfds	1,023	-33

Top Rated

Stocks displaying the best Composite rating

Symbol	Name	Mkt val, USD (Mil)	Composite Rating
IAG.GB	Intl.Cons.Airl.Gp.(Cdi)	18,643	96
IDS.GB	International Distribution	4,353	94
LOG.ES	Logista Hold	4,043	93
INPW.NL	Inpost	8,427	92
EZJ.GB	Easyjet	5,434	92
PST.IT	Poste Italiane	18,451	86
IDL.FR	Id Logistics Group	2,510	86
DSV.DK	Dsv	50,668	85
DSB.DK	A P Moller Maersk B	9,730	84
RYA.IE	Ryanair Holdings	21,758	82
DSA.DK	A P Moller Maersk A	15,074	80
ALD.FR	Ayvens	5,415	77
HLGX.DE	Hapag Lloyd (Xet)	28,139	75
CKN.GB	Clarkson	1,507	75
WWI.NO	Wilhs.Wilhelmsen Hdg.'A'	1,188	75

Basing

Stocks trading near pivot on improving technical characteristics

Symbol	Name	Mkt Val, USD (Mil)	Composite Rating
--------	------	--------------------	------------------

European Weekly Summary

WILLIAM O'NEIL+CO.

Utility

European Focus List

O'Neil recommendations

Symbol	Name	Mkt Val, USD (Mil)	Focus List Since
--------	------	-----------------------	------------------

Breaking Out This Week

Stocks breaking out from consolidation

Symbol	Name	Mkt Val, USD (Mil)	Composite Rating
--------	------	-----------------------	------------------

Laggards

Stocks showing technical weakness

Symbol	Name	Mkt Val, USD (Mil)	A/D, Nmbr	Rtg, Cur	Wk
EVN.AT	Evn	3,958			-38
RWEX.DE	Rwe (Xet)	21,916			-34
ECP.PT	Edp Energias De Portuga	13,528			-33
SSE.GB	Sse	22,225			-32
ELI.BE	Elia Group	5,628			-30
REN.PT	Ren Redes Energeticas	1,559			-30

Top Rated

Stocks displaying the best Composite rating

Symbol	Name	Mkt Val, USD (Mil)	Composite Rating
ELE.ES	Endesa	22,538	90
DRX.GB	Drax Group	2,927	90
TEP.GB	Telecom Plus	1,707	81
IBE.ES	Iberdrola	86,622	80
A2A.IT	A2a	6,921	79
BKW.CH	Bkw	8,715	78
ACE.IT	Acea	4,054	75
ENGI.FR	Engie	37,870	74
SVT.GB	Severn Trent	9,472	73
TRN.IT	Terna Rete Elettrica Naz	15,953	69
IG.IT	Italgas	4,535	69
ENEL.IT	Enel	72,168	68
VIE.FR	Veolia Environ	20,702	66
CTG.ES	Naturgy Energy	23,401	64
UU.GB	United Utilities Group	8,941	58

Basing

Stocks trading near pivot on improving technical characteristics

Symbol	Name	Mkt Val, USD (Mil)	Composite Rating
--------	------	--------------------	------------------

Disclaimer

William O'Neil + Co. Incorporated offers the world's leading institutional investment managers a distinct blend of quantitative, fundamental, and technical expertise in global stock buy-and-sell recommendations. Its core method profiles stocks displaying the characteristics of outperformance proven persistent over market history—drawn from the firm's industry-leading database.

William O'Neil + Co. Incorporated is an SEC Registered Investment Advisor. William O'Neil India Pvt Ltd Associates and William O'Neil Shanghai Pvt. Ltd. may develop research content on behalf of William O'Neil + Co. Our content should not be relied upon as the sole factor in determining whether to buy, sell, or hold a stock. For important information about reports, our business, and legal notices (including our Privacy Policy), please go to williamoneil.com/legal.

Limitations of Use of Stock Charts

Our content and stock charts, which provide certain current and historical information, should not be relied upon as the sole factor in determining whether to buy, sell, or hold a stock. The charts provide certain current and historical information, but are not a substitute for a comprehensive analysis of the individual stocks.

No Investment Banking

William O'Neil + Co. and its affiliates do not engage in investment banking and do not make a market in any securities. Neither William O'Neil + Co. nor any of its affiliates have, during the past 12 months, received any compensation from any of the companies discussed in this report. None of the companies discussed in this report are, or have been during the past 12 months, clients of William O'Neil + Co. or its affiliates.

Proprietary Positions

William O'Neil + Co. does not maintain proprietary positions in any securities. Employees of William O'Neil + Co. and its affiliates may now or in the future own positions in the companies discussed in this report. As of the end of the month immediately preceding the date of publication of such reports, none of such employees or affiliates beneficially owned 1% or more of the common equity securities of any of the companies discussed in this report.

© 2023, William O'Neil + Company, Inc. All rights reserved.

No part of this material may be copied or duplicated in any form by any means or redistributed without the prior written consent of William O'Neil + Co.