

# European Weekly Summary

December 09, 2024

## Key points:

- **European indices accelerated their upward momentum and moved higher last week.** Germany, Spain, and Norway clocked new highs during the week while the U.K. and Sweden closed ~1% off 52-week highs. Sweden, Italy, France, and Austria regained their 50-DMA. Germany and Spain were upgraded to a Confirmed Uptrend, while Ireland was moved to a Rally Attempt. Norway was moved to Under Pressure. To remain constructive, we would like to see the momentum persisting with broader participation.
- **Sectors closed mostly positive last week.** Cyclical (+4.9%) led the gain, followed by Technology (+3.8%) and Retail (+3.3%). Capital Equipment, Financial and Transportation gained 2% - 3%. Energy closed 2% lower, while Utility declined 0.5%. On our rotation graph, leading over 26-weeks, Financial is showing further strength while Retail, and Capital Equipment are exhibiting negative short-term momentum. Technology and Cyclical also continued to exhibit positive short-term momentum. On the other hand, short-term momentum among Staples, Transportation, Materials and Health Care deteriorated further.
- **European Focus List Update:** We didn't add or removed stocks from our European Focus List last week. Actionable names include **Nemetschek (NEMX.DE)**, **Galderma Group (GALD.CH)**, **Inditex (IND.ES)**, and **Technogym (TGYM.IT)**.
- **Sector Score Cards:** outside of our Focus List, the following top-rated names fundamentally through our lens are showing improving technical characteristics and are actionable: **Ferrovial (FERC.SE)**, **Moonpig (MOON.GB)**, **Adyen (ADYE.NL)**, **Beazley (BEZ.GB)**, **Wise (WISE.GB)**, **Zalando (ZALX.DE)**, **Watched of Switzerland (WOSG.GE)**, **Pandora (PND.DK)**, and **Poste Italiane (PST.IT)**.

Prepared by:

Tristan d'Aboville – Executive Director – Research Analyst,

[tristan.daboville@williamoneil.com](mailto:tristan.daboville@williamoneil.com) | Direct: +44 20 3178 7125 | Mobile: +44 77 0344 5260

# European Weekly Summary

## Europe's main index back above 50-/200-DMA, 3% off 52-week highs

- The Stoxx 600 gained ~2.1% last week, retaking its key resistance level at the 50/200-DMA. The index remained in a Rally Attempt. We would like the index to hold above its long-term moving averages without clustering of distribution days to remain constructive.
- Among the 16 indices we cover, three indices are in Confirmed Uptrend, 12 indices in a Rally Attempt, and Norway is Under Pressure.
- Germany and Spain were upgraded to a Confirmed Uptrend, while Ireland was moved to a Rally Attempt. Norway was moved to Under Pressure.
- We remain constructive on the overall market following strong moves in key indices and recommend adding risks as indices are clearing above their resistance levels. Focus on quality O'Neil ideas within strong industry groups in constructive geographies and emerging out from proper bases or bouncing off key support levels.

## Sector Rotation:

- On our rotation graph, sectoral performance was mixed. In the best quadrant, Financial is showing further strength while Retail and Capital Equipment exhibited negative short-term momentum in the last week.
- Technology and Cyclical also showed short-term positive momentum. Utilities and Materials took a pause after a few weeks of underperformance.
- Staples, Transportation, and Health Care showed sharp deterioration in short-term momentum.

## European Focus List

- Addition: None
- Removal: None
- Actionable names include Nemetschek (NEMX.DE), Galderma Group (GALD.CH), Inditex (IND.ES), and Technogym (TGYM.IT).

## Sector Heat Map: Average Perf. - Market Cap Average Weighted

(Market Cap > \$1BN & ADV > \$1M)

Sectors	5 Days	4 Weeks	8 Weeks	13 Weeks	26 Weeks	52 Weeks
Consumer Cyclical	4.9%	4.5%	0.6%	5.8%	-6.0%	2.3%
Technology	3.8%	5.1%	2.3%	9.9%	4.3%	20.5%
Retail	3.3%	4.3%	4.3%	10.6%	11.1%	21.8%
Capital Equipment	2.7%	3.0%	4.9%	12.2%	6.6%	33.3%
Transportation	2.6%	3.0%	5.6%	10.7%	6.3%	16.9%
Financial	2.4%	3.8%	3.1%	7.4%	7.2%	23.1%
Basic Material	1.5%	-0.2%	-3.4%	3.8%	-4.8%	3.4%
Health Care	0.4%	0.3%	-5.1%	-7.6%	-3.6%	12.6%
Consumer Staple	0.2%	0.1%	-6.1%	-6.6%	-7.7%	-4.5%
Utility	-0.5%	2.2%	-1.8%	-2.6%	3.7%	0.8%
Energy	-2.0%	-1.4%	-7.3%	-5.5%	-12.3%	-8.3%

Source: William O'Neil + Co.

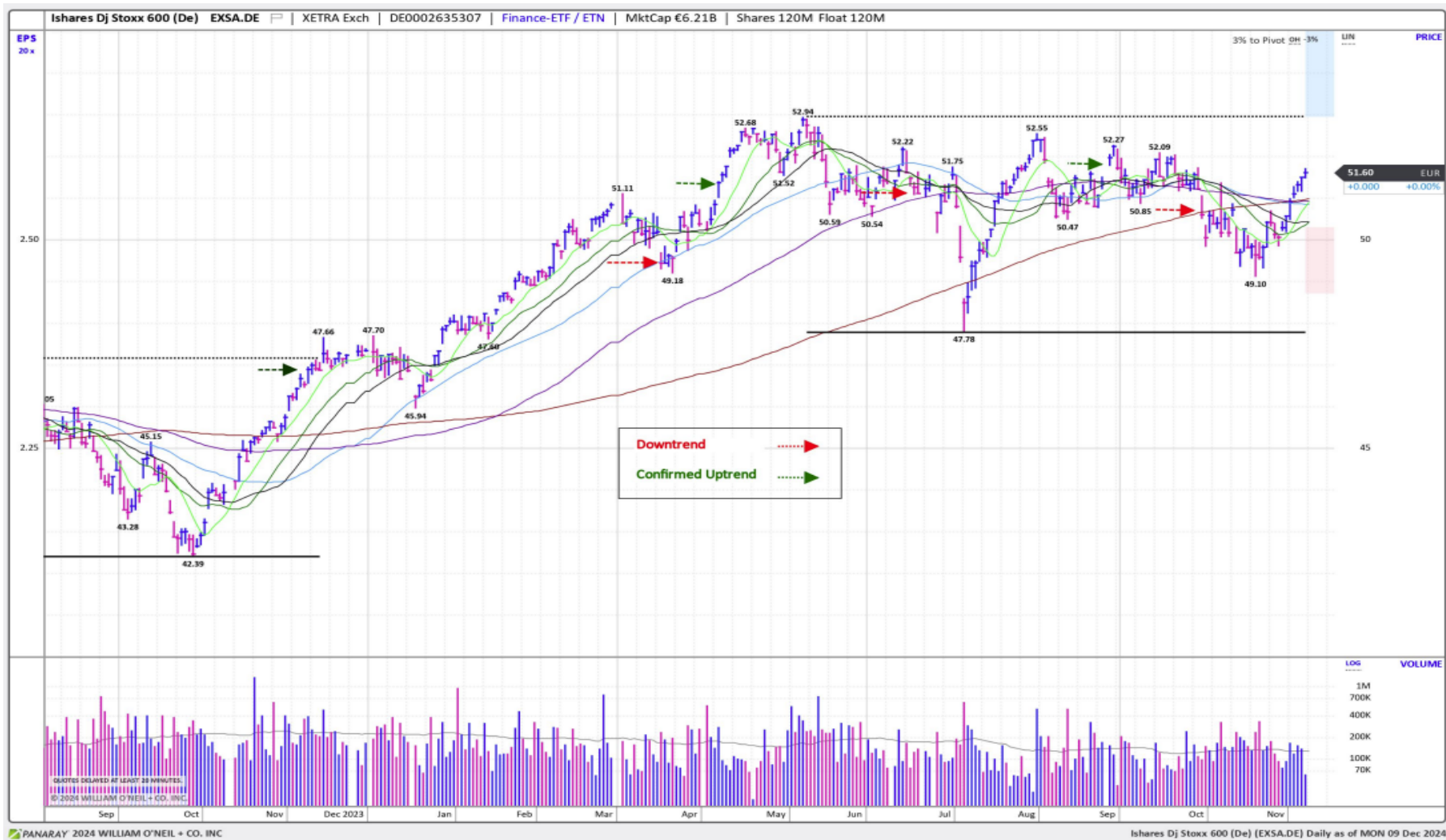
## Market Condition

### O'Neil Methodology

Country	Market Condition	Distribution Days
France	Rally Attempt	na
Germany	Confirmed Uptrend	0
UK	Rally Attempt	na
Stoxx600	Rally Attempt	na
Denmark	Confirmed Uptrend	2
Ireland	Rally Attempt	na
Finland	Rally Attempt	na
Norway	UnderPressure	1
Sweden	Rally Attempt	na
Switzerland	Rally Attempt	na
Austria	Rally Attempt	na
Italy	Rally Attempt	na
Portugal	Rally Attempt	na
Spain	Confirmed Uptrend	5
Belgium	Rally Attempt	na
Netherlands	Rally Attempt	na
<b>All Europe (Average)</b>		<b>2.0</b>

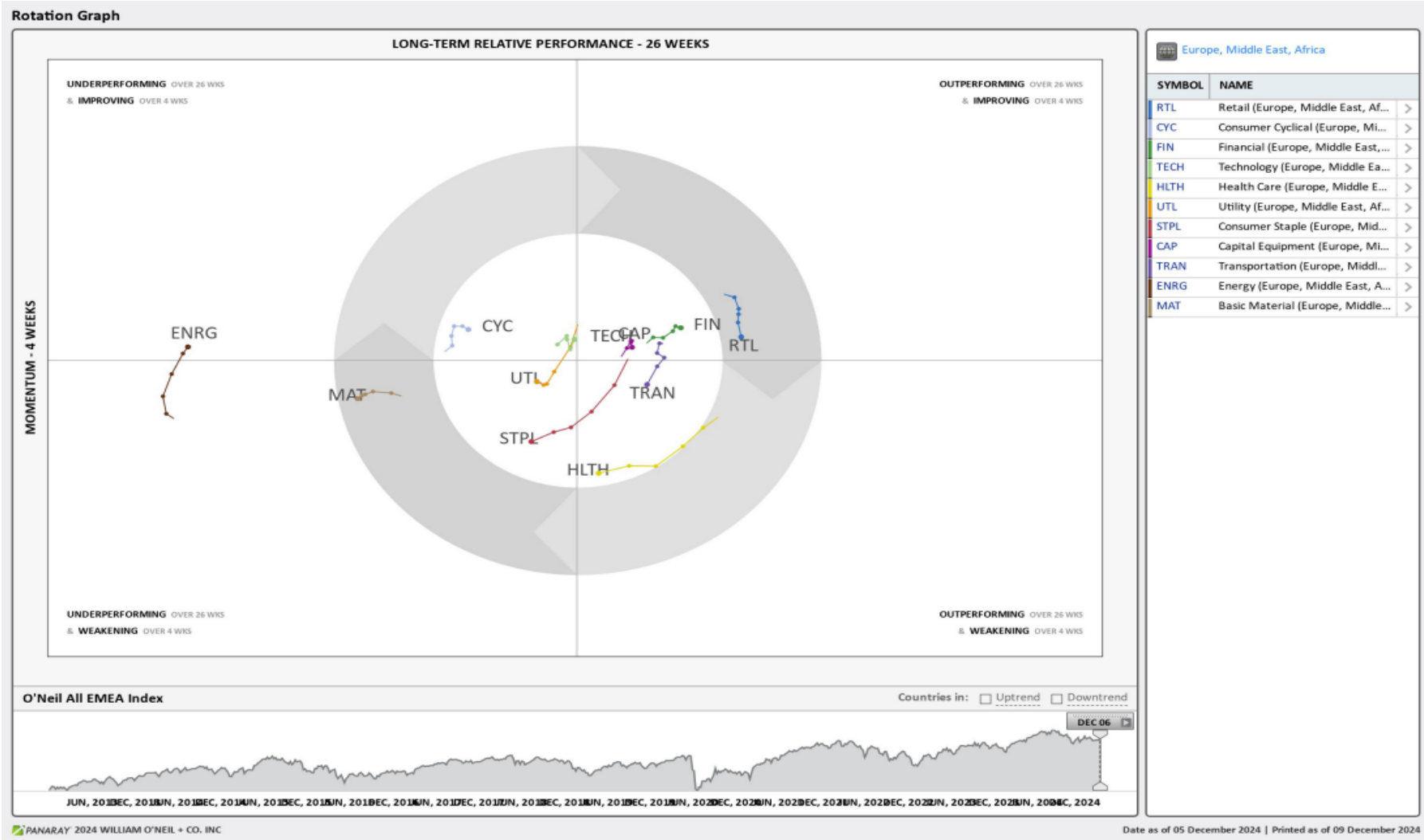
Source: William O'Neil + Co.

# iShares Dj Stoxx 600 (EXSA.DE) – Daily Datagraph®



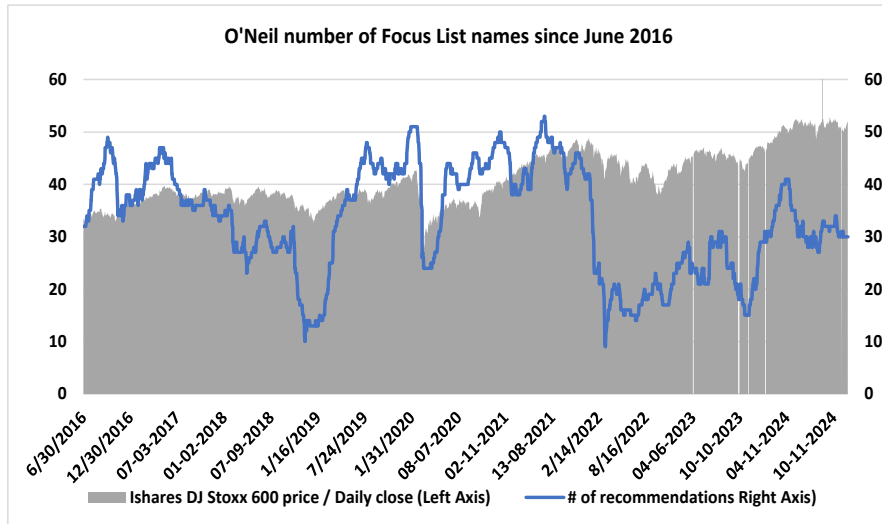
Source: William O'Neil + Co.

# EMEA Rotation Chart

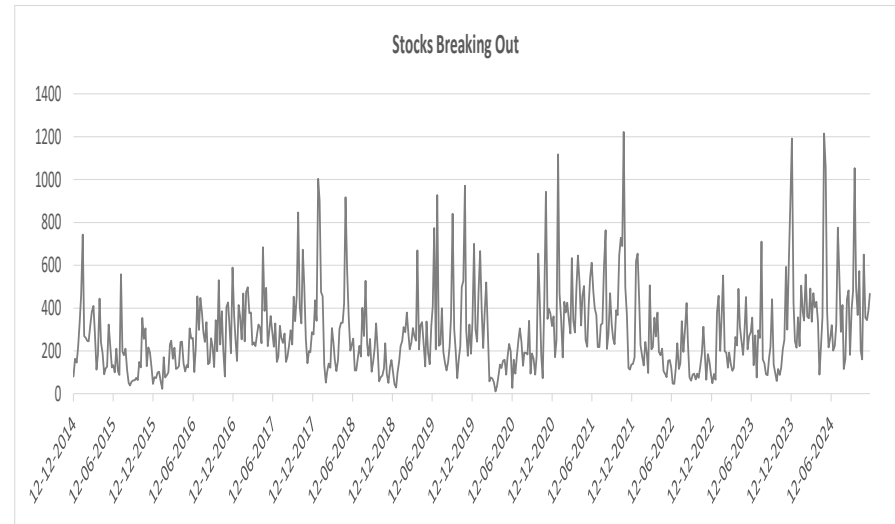


Source: William O'Neil + Co.

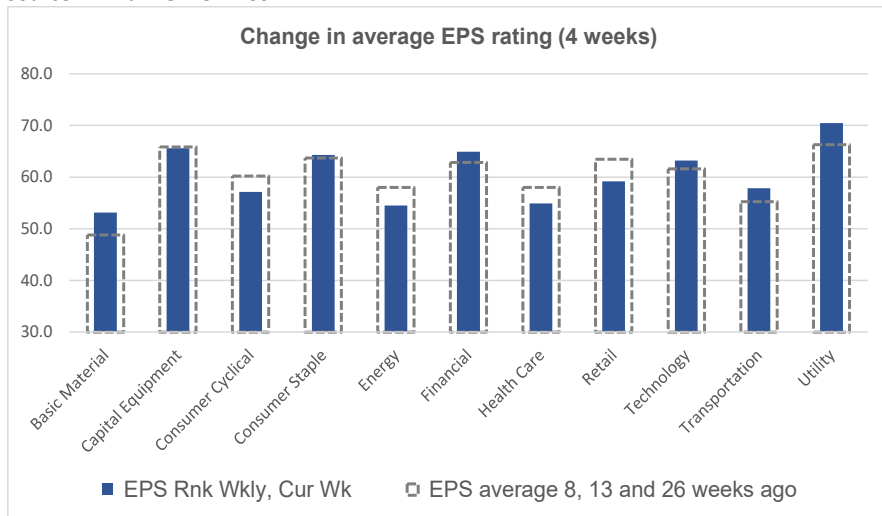
## Key Metrics Change: EPS, RS, # of EFL names & Breakouts



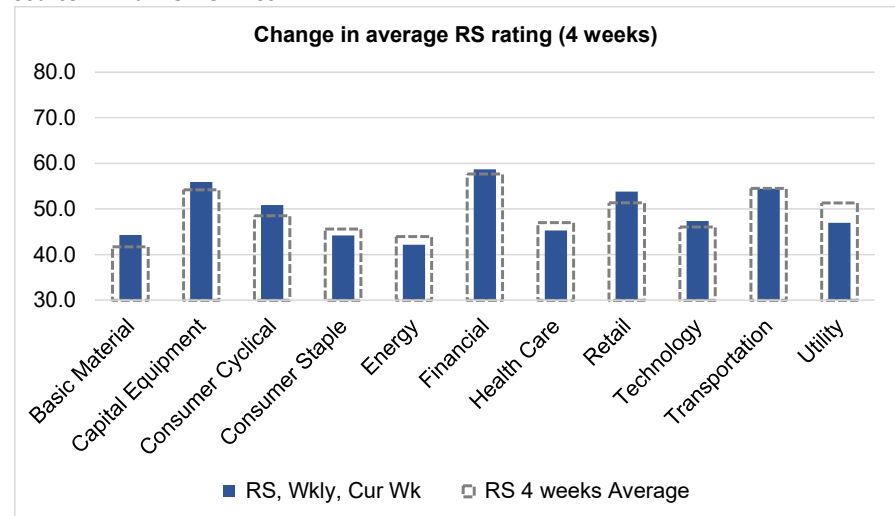
Source: William O'Neil + Co.



Source: William O'Neil + Co.



Source: William O'Neil + Co.



Source: William O'Neil + Co.

## How To Read The Sector Card

---

### European Focus List

O'Neil Recommendations

The **European Focus List (EFL)** is a proprietary list of long ideas that fit the fundamental and technical criteria of the O'Neil Methodology.

### Outperforming

Stocks breaking out from pivot

We recommend buying stocks at the **breakout level**. A breakout is a price movement of the security through an identified level of resistance (pivot point) after forming a consolidation base. Our proprietary chart patterns are based on over 50 years of our active research into the behavior of equities.

### Laggards

Stocks in which investors are losing interest

**Laggards** are stocks showing technical weakness. We believe these stocks are laggards relative to their own domestic markets and, if owned, need to be reviewed carefully as they may be vulnerable to further downside risk and underperformance.

### Top Rated

Stocks displaying the best Composite rating

The **Composite Rating** combines the EPS Rank, Relative Strength Rating, Industry Group Rank, SMR Rating, Accumulation/Distribution Rating, and the stock's percent off its 52-week high. More weight is placed on EPS Rank and Relative Strength Ratings. The resulting rating of technical and fundamental factors is compared against all other stocks in the trading country and assigned a rating from 1 to 99, with 99 being the best. A rating of 90 means the stock has outperformed 90% of all other stocks.

### Early Basing

Stocks trading near pivot on improving technical characteristics

**Stock near pivot point** (last line of resistance) with improving technical characteristics and above average fundamental profile based on O'Neil proprietary ratings and rankings.



## Basic Material

### European Focus List

O'Neil recommendations

Symbol	Name	Mkt Val, USD (Mil)	Focus List Since
--------	------	--------------------	------------------

### Breaking Out This Week

Stocks breaking out from consolidation

Symbol	Name	Mkt Val, USD (Mil)	Composite Rating
--------	------	--------------------	------------------

### Laggards

Stocks showing technical weakness

Symbol	Name	Mkt Val, USD (Mil)	A/D, Nbr Rtg, Cur Wk
SY1X.DE	Symrise (Xet)	15,187	-46
METB.FI	Metsa Board B	1,508	-41
KEMR.FI	Kemira	3,171	-32
EMSN.CH	Ems-Chemie 'N'	16,809	-31
CLN.CH	Clariant	4,042	-31
GBLN.BE	Gbl New	9,677	-28
COR.PT	Corticeira Amorim	1,179	-28
WCHX.DE	Wacker Chemie (Xet)	4,017	-26

### Top Rated

Stocks displaying the best Composite rating

Symbol	Name	Mkt Val, USD (Mil)	Composite Rating
ALTR.PT	Altri Sgps	1,107	99
CEM.IT	Cementir Holding	1,894	96
BOL.SE	Boliden Ord Shs	8,185	92
VCT.FR	Vicat	1,720	92
HILS.GB	Hill & Smith Plc	2,148	91
ROBT.FR	Robertet	1,998	90
HOC.GB	Hochschild Mining	1,469	90
ALLM.SE	Alleima	1,820	88
HOLN.CH	Holcim	59,395	84
FRES.GB	Fresnillo	6,156	84
SOL.IT	Sol	3,389	81
TEN.IT	Tenaris	22,183	77
APAM.NL	Aperam	2,157	76
NA.SE	Nolato B	1,192	76
KAP.GB	Kazatomprom Jsc Nation	10,711	74

### Basing

Stocks trading near pivot on improving technical characteristics

Symbol	Name	Mkt Val, USD (Mil)	Composite Rating
ALLM.SE	Alleima	1,820	88

# European Weekly Summary

## Capital Equipment

### European Focus List

O'Neil recommendations

Symbol	Name	Mkt Val, USD (Mil)	Focus List Since
QT@F.FR	Schneider Electric	1,53,140	12-6-24
SGM.FR	Safran	96,146	17-5-23
REL.GB	Relx	88,848	4-8-22
RR.GB	Rolls-Royce Holdings	63,556	15-11-23
RHMX.DE	Rheinmetall (Xet)	30,009	19-11-24
ALF.SE	Alfa Laval	18,696	20-3-24

### Breaking Out This Week

Stocks breaking out from consolidation

Symbol	Name	Mkt Val, USD (Mil)	Composite Rating
FERC.ES	Ferrovial	31,729	96
G1AX.DE	Gea Group (Xet)	8,761	84

### Laggards

Stocks showing technical weakness

Symbol	Name	Mkt Val, USD (Mil)	A/D, Nbr	Rtg, Cur Wk
LAND.CH	Landis+gyr Group	1,997		-43
SENS.CH	Sensirion Holding	1,008		-43
PAGE.GB	Pagegroup	1,498		-32
MAYR.AT	Mayr-Melnhof Karton	1,463		-31
ADEN.CH	Adecco Group	4,589		-29
DG@F.FR	Vinci	63,036		-28
ABF.GB	Associated Brit.Foods	20,970		-28
SPIE.FR	Spie	5,307		-28
HAS.GB	Hays	1,608		-26

### Top Rated

Stocks displaying the best Composite rating

Symbol	Name	Mkt Val, USD (Mil)	Composite Rating
KOG.NO	Kongsberg Gruppen	20,975	99
LAGR.SE	Lagercrantz Group B	3,886	99
DOKA.CH	Dorma Kaba Hold	3,245	99
RHMX.DE	Rheinmetall (Xet)	30,009	98
SAAB.SE	Saab B	12,035	98
SUBF.SE	Securitas B	7,075	98
KCR1.FI	Konecranes	5,577	98
EXL.FR	Exclusive Net Prom	2,330	98
KLR.GB	Keller	1,427	98
PER.DK	Per Aarsleff Holding B	1,291	98
MYCR.SE	Mycronic	3,723	97
FERC.ES	Ferrovial	31,729	96
PUB.FR	Publicis Groupe	28,063	96
HOTX.DE	Hochtief (Xet)	10,629	96
ADDT.SE	Addtech B	7,486	96

### Basing

Stocks trading near pivot on improving technical characteristics

Symbol	Name	Mkt Val, USD (Mil)	Composite Rating
VOBF.SE	Volvo B	41,656	88
ALF.SE	Alfa Laval	18,696	90
EPIA.SE	Epiroc A	15,735	81
BVI.FR	Bureau Veritas	14,229	88
TT@G.SE	Trelleborg B	7,796	76
SKTF.SE	Beijer Ref B	7,637	93
ADDT.SE	Addtech B	7,486	96
KCR1.FI	Konecranes	5,577	98
MYCR.SE	Mycronic	3,723	97
MT.IT	Marie	2,699	95
DUEX.DE	Duerr (Xet)	1,709	75

## Consumer Cyclical

### European Focus List

O'Neil recommendations

Symbol	Name	Mkt Val, USD (Mil)	Focus List Since
ADXS.DE	Adidas (Xet)	45,966	20-11-23
LOTG.IT	Lottomatica Group	3,418	12-7-24
TGYM.IT	Technogym	2,188	13-2-24
MIPS.SE	Mips	1,157	27-8-24

### Breaking Out This Week

Stocks breaking out from consolidation

Symbol	Name	Mkt Val, USD (Mil)	Composite Rating
FHZN.CH	Flughafen Zurich	7,701	87
MOON.GB	Moonpig Group plc	1,180	97

### Laggards

Stocks showing technical weakness

Symbol	Name	Mkt Val, USD (Mil)	A/D, Nbr Rtg, Cur Wk
MMT.FR	M6-Metropole Tv	1,464	-40
BKG.GB	Berkeley Group Hdq.(The	5,343	-37
MBGX.DE	Mercedes-Benz Group (X	60,814	-30
NOKT.FI	Nokian Renkaat	1,096	-28
TW.GB	Taylor Wimpey	5,788	-26

### Top Rated

Stocks displaying the best Composite rating

Symbol	Name	Mkt Val, USD (Mil)	Composite Rating
TRN.GB	Trainline Plc.	2,476	99
FAN.GB	Volution Group	1,436	99
TIFS.GB	Ti Fluid Systems Plc	1,219	99
ADSH.ES	Aedas Homes	1,178	99
HOME.ES	Neinor Homes	1,206	98
MEGP.GB	Me Group Intl.	1,037	98
GAW.GB	Games Workshop	5,941	97
CCL.GB	Carnival	3,460	97
BETS.SE	Betsson B	1,652	97
MOON.GB	Moonpig Group plc	1,180	97
MIPS.SE	Mips	1,157	97
SGO.FR	Saint Gobain	47,955	96
AC.FR	Accor	11,852	96
LFDJ.FR	La Francaise Des Jeux	7,379	96
TUI1X.DE	Tui (Xet)	4,533	96

### Basing

Stocks trading near pivot on improving technical characteristics

Symbol	Name	Mkt Val, USD (Mil)	Composite Rating
RMS.FR	Hermes Intl.	2,52,067	95
LIFC.SE	Lifco B	13,192	95
RAAX.DE	Rational (Xet)	10,672	84
FRAX.DE	Fraport (Xet)	5,278	79
DLG.IT	De Longhi	4,771	70
FUTR.GB	Future	1,560	87

## Consumer Staples

### European Focus List

O'Neil recommendations

Symbol	Name	Mkt Val, USD (Mil)	Focus List Since
GALD.CH	Galderma Group N	23,763	21-8-24
PFD.GB	Premier Foods	2,079	10-7-24

### Breaking Out This Week

Stocks breaking out from consolidation

Symbol	Name	Mkt Val, USD (Mil)	Composite Rating
--------	------	--------------------	------------------

### Laggards

Stocks showing technical weakness

Symbol	Name	Mkt Val, USD (Mil)	A/D, Nbr	Rtg, Cur Wk
LISP.CH	Choc.Lindt & Spruengli Pa	11,154		-52
NESN.CH	Nestle 'N'	2,25,892		-50
SZUX.DE	Suedzucker (Xet)	2,326		-43
HB.NL	Heineken	42,203		-34
LISN.CH	Chocoladefabriken Lindt &	15,036		-32
RCD.FR	Pernod-Ricard	29,146		-27

### Top Rated

Stocks displaying the best Composite rating

Symbol	Name	Mkt Val, USD (Mil)	Composite Rating
LBAK.BE	Lotus Bakeries	9,539	93
ORK.NO	Orkla	9,112	93
IMB.GB	Imperial Brands	27,463	92
GNC.GB	Greencore Group	1,206	92
GALD.CH	Galderma Group N	23,763	91
AUSS.NO	Austevoll Seafood	1,837	91
AAK.SE	Aak	7,134	90
BVIC.GB	Britvic	4,079	88
ESSI.SE	Essity B	17,961	87
BAKK.GB	Bakkavor Group Plc	1,106	87
MHG.NO	Mowi	9,438	86
HFG.GB	Hilton Food Group	1,032	85
CWK.GB	Cranswick	3,436	84
PFD.GB	Premier Foods	2,079	84
RBR.DK	Royal Unibrew	3,803	82

### Basing

Stocks trading near pivot on improving technical characteristics

Symbol	Name	Mkt Val, USD (Mil)	Composite Rating
MHG.NO	Mowi	9,438	86

# European Weekly Summary

## Energy

### European Focus List

O'Neil recommendations

Symbol	Name	Mkt Val, USD (Mil)	Focus List Since
--------	------	--------------------	------------------

### Breaking Out This Week

Stocks breaking out from consolidation

Symbol	Name	Mkt Val, USD (Mil)	Composite Rating
--------	------	--------------------	------------------

### Laggards

Stocks showing technical weakness

Symbol	Name	Mkt Val, USD (Mil)	A/D, Nbr	Rtg, Cur Wk
FP.FR	Totalenergies	1,37,434		-39
RUI.FR	Rubis	2,493		-32
ERG.IT	Erg	3,209		-29
ENI.IT	Eni	46,589		-28
ESSO.FR	Esso	1,419		-27
NEST.FI	Neste	10,712		-26

### Top Rated

Stocks displaying the best Composite rating

Symbol	Name	Mkt Val, USD (Mil)	Composite Rating
GTT.FR	Gtt	5,320	99
DEMG.BE	Deme Group	3,955	96
SPM.IT	Saipem	5,252	95
SEPL.GB	Seplat Ptl.Dev. (Lon) (Di)	1,575	91
VLR.FR	Vallourec	4,131	87
NEOP.FR	Neoen	6,370	86
SUBC.NO	Subsea 7	4,689	80
SBMO.NL	Sbm Offshore	3,147	78
VARE.NO	Var Energi	7,774	77
MAU.FR	Maurel Et Prom	1,027	76
VPK.NL	Koninklijke Vopak	5,858	75
DCC.GB	Dcc	6,993	74
NOE.NO	Bluenord	1,366	72
TGS.NO	Tgs	1,935	71
SCAT.NO	Scatec	1,144	68

### Basing

Stocks trading near pivot on improving technical characteristics

Symbol	Name	Mkt Val, USD (Mil)	Composite Rating
--------	------	--------------------	------------------

## Financial

### European Focus List

O'Neil recommendations

Symbol	Name	Mkt Val, USD (Mil)	Focus List Since
III.GB	3i Group	46,269	22-8-24
EQT.SE	Eqf	37,098	22-2-24
TLXX.DE	Talanx Aktgsf. (Xet)	22,927	15-11-24
BP.IT	Banco Bpm	12,027	14-11-24
BWGP.AT	Bawag Group	6,414	18-11-24
SQN.CH	Swissquote 'R'	6,287	16-1-24

### Breaking Out This Week

Stocks breaking out from consolidation

Symbol	Name	Mkt Val, USD (Mil)	Composite Rating
ADYE.NL	Adyen	49,681	99
SVK.SE	Svenska Handelsbanken	20,725	85
SPSN.CH	Swiss Prime Site	8,622	88
BEZ.GB	Beazley	6,681	98
KOB.DK	Kobenhavns Lufthavne	6,673	96
DLG.GB	Direct Line In.Group	4,165	90
VONN.CH	Vontobel Holding	3,942	85
BPSO.IT	Banca Ppo.Di Sondrio	3,838	98
UNIES	Unicaja Banco	3,541	82
FTKX.DE	Fintech Group (Xet)	1,799	99

### Laggards

Stocks showing technical weakness

Symbol	Name	Mkt Val, USD (Mil)	A/D, Nbr	Rtg, Cur Wk
MERY.FR	Mercialys Reit	1,017		-64
AV.GB	Aviva	16,502		-51
RAT.GB	Rathbones Group	1,972		-50
ARG.FR	Argan	1,686		-50
COFN.BE	Cofinimmo	2,269		-49
ATRJ.SE	Atrium Ljungberg B	2,344		-46
WKP.GB	Workspace Group	1,332		-42
VGP.BE	Vgp	2,178		-38
HYQX.DE	Hypoport Finance (Xet)	1,385		-29
UKW.GB	Greencoat Uk Wind	3,626		-28
DLN.GB	Derwent London	2,965		-27

### Top Rated

Stocks displaying the best Composite rating

Symbol	Name	Mkt Val, USD (Mil)	Composite Rating
ADYE.NL	Adyen	49,681	99
WISE.GB	WISE A	12,141	99
SQN.CH	Swissquote 'R'	6,287	99
BPT.GB	Bridgepoint Grp	3,893	99
QLT.GB	Quilter	2,777	99
TCAP.GB	Tp Icap	2,559	99
FTKX.DE	Fintech Group (Xet)	1,799	99
NWG.GB	Natwest Group	42,427	98
LI.FR	Klepierre Reit	8,756	98
BEZ.GB	Beazley	6,681	98
VZN.CH	Vz Holding 'N'	6,592	98
BPSO.IT	Banca Ppo.Di Sondrio	3,838	98
ANI.IT	Anima Holding	2,175	98
PROT.NO	Protector Forsikring	2,152	98
MING.NO	Sparebank 1 Smn Ords	2,146	98

### Basing

Stocks trading near pivot on improving technical characteristics

Symbol	Name	Mkt Val, USD (Mil)	Composite Rating
NBH.FI	Nordea Bank (Hel)	41,089	91
INVE.SE	Investor A	35,032	90
HNR1X.DE	Hannover Rueck SE (Xet)	32,657	92
SAMA.FI	Sampo A	24,070	85
WISE.GB	WISE A	12,141	99
BSAB.ES	Banco De Sabadell	10,908	94
FCBK.IT	Finecobank Spa	10,714	95
DWSX.DE	Dws Group Gmbh & Co. I	8,477	84
ICG.GB	Intermediate Capital Gp.	8,275	73
BKT.ES	Bankinter 'R'	7,371	84
RAI.AT	Raiffeisen Bank Intl.	6,801	82
BPT.GB	Bridgepoint Grp	3,893	99
AZM.IT	Azimut Holding	3,776	79
AZA.SE	Avanza Bank Holding	3,771	95
BURE.SE	Bure Equity	2,679	96

## Healthcare

### European Focus List

O'Neil recommendations

Symbol	Name	Mkt Val, USD (Mil)	Focus List Since
SOBI.SE	Swedish Orphan Biovitrum	10,267	19-8-24
SFZN.CH	Siegfried 'R'	5,496	15-12-23
HLB.DK	H Lundbeck B	4,958	28-6-24
VITR.SE	Vitrolife	2,692	23-7-24
VIMG.SE	Vimian Group	1,996	16-8-24

### Breaking Out This Week

Stocks breaking out from consolidation

Symbol	Name	Mkt Val, USD (Mil)	Composite Rating
TERA.FI	Terveystalo	1,461	95

### Laggards

Stocks showing technical weakness

Symbol	Name	Mkt Val, USD (Mil)	A/D, Nbr Rtg, Cur Wk
NOVN.CH	Novartis 'R'	2,23,828	-44
GSK.GB	Gsk	70,996	-35
GIND.SE	Getinge B	3,980	-34
AMP.IT	Amplifon	5,815	-33
ROG.CH	Roche Holding	2,05,484	-32
MRXX.DE	Merck Kgaa (Xet)	19,091	-31
GXIX.DE	Gerresheimer (Xet)	2,753	-31
AZN.GB	Astrazeneca	2,10,487	-28

### Top Rated

Stocks displaying the best Composite rating

Symbol	Name	Mkt Val, USD (Mil)	Composite Rating
ALK.DK	Alk-Abello B	4,639	98
XVIV.SE	Xvivo Perfusion	1,341	98
ORNB.FI	Orion B	5,151	96
SOBI.SE	Swedish Orphan Biovitrum	10,267	95
TERA.FI	Terveystalo	1,461	95
OSS.DK	Embla Medical	2,182	93
ARGX.BE	Argenx	37,697	89
SDZ.CH	Sandoz Group	19,208	89
HLB.DK	H Lundbeck B	4,958	89
CHM.DK	Chemometec	1,188	89
BPHG.SE	Bonesupport Holding	2,161	88
FAGR.BE	Fagron	1,402	88
IPN.FR	Ipsen	9,630	87
SFZN.CH	Siegfried 'R'	5,496	87
VIRB.FR	Virbac	2,829	84

### Basing

Stocks trading near pivot on improving technical characteristics

Symbol	Name	Mkt Val, USD (Mil)	Composite Rating
EUZX.DE	Eckert & Ziegler (Xet)	1,059	72

# European Weekly Summary

## Retail

### European Focus List

O'Neil recommendations

Symbol	Name	Mkt Val, USD (Mil)	Focus List Since
IND.ES	Inditex	1,83,883	29-11-23

### Breaking Out This Week

Stocks breaking out from consolidation

Symbol	Name	Mkt Val, USD (Mil)	Composite Rating
IND.ES	Inditex	1,83,883	96
ZALX.DE	Zalando (Xet)	9,587	97
TKWY.NL	Just Eat Takeaway.Com	3,679	72
WOSG.GB	Watches of Switzerland C	1,716	93

### Laggards

Stocks showing technical weakness

Symbol	Name	Mkt Val, USD (Mil)	A/D, Nbr	Rtg, Cur Wk
FRAS.GB	Frasers Group	3,661		-63
OCDO.GB	Ocado Group	3,372		-36
DNLM.GB	Dunelm Group	2,943		-29

### Top Rated

Stocks displaying the best Composite rating

Symbol	Name	Mkt Val, USD (Mil)	Composite Rating
EI.FR	Essilorluxottica	1,11,465	99
CLAS.SE	Clas Ohlson B	1,212	99
MKS.GB	Marks & Spencer Group	10,239	97
ZALX.DE	Zalando (Xet)	9,587	97
FDR.ES	Fluidra	5,215	97
IND.ES	Inditex	1,83,883	96
PND.DK	Pandora	14,120	96
CPG.GB	Compass Group	59,475	94
SSPG.GB	Ssp Group	1,914	94
WOSG.GB	Watches of Switzerland C	1,716	93
TSCO.GB	Tesco	31,550	91
BC.IT	Brunello Cucinelli	6,965	91
ELPB.SE	Electrolux Professional B	1,770	88
ROO.GB	Deliveroo plc	3,121	85
HBHX.DE	Hornbach Holding	1,419	83

### Basing

Stocks trading near pivot on improving technical characteristics

Symbol	Name	Mkt Val, USD (Mil)	Composite Rating
--------	------	--------------------	------------------



## Technology

### European Focus List

O'Neil recommendations

Symbol	Name	Mkt Val, USD (Mil)	Focus List Since
NEMX.DE	Nemetschek (Xet)	12,391	15-11-23
NGP.DK	Netcompany Group	2,622	12-11-24

### Breaking Out This Week

Stocks breaking out from consolidation

Symbol	Name	Mkt Val, USD (Mil)	Composite Rating
--------	------	--------------------	------------------

### Laggards

Stocks showing technical weakness

Symbol	Name	Mkt Val, USD (Mil)	A/D, Nbr	Rtg, Cur Wk
WAVE.FR	Wavestone	1,075		-60
CAP.FR	Capgemini	28,725		-32
MELE.BE	Melexis	2,406		-31
CCC.GB	Computacenter	3,106		-30
TEC2.IT	Technoprobe Spa	4,046		-29
QTGR.FI	Qt Group	1,923		-28

### Top Rated

Stocks displaying the best Composite rating

Symbol	Name	Mkt Val, USD (Mil)	Composite Rating
HEMN.SE	Hemnet Group	2,979	99
BCG.GB	Baltic Classifieds Grp	2,151	99
TRB.SE	Truecaller B	1,500	99
SETB.SE	Sectra B	4,891	98
FORT.SE	Fortnox Ab	4,207	98
ACQB.SE	Yubico	2,295	98
VITB.SE	Vitec Software Group B	1,747	98
TRST.GB	Trustpilot Group	1,594	98
REY.IT	Reply	6,204	97
NGP.DK	Netcompany Group	2,622	97
ALEK.FR	Esker	1,673	97
SGE.GB	Sage Group	16,900	96
AG1X.DE	Auto1 Grp (Xet)	3,711	96
PLWP.FR	Planisware	2,018	96
SAPX.DE	Sap (Xet)	3,14,235	95

### Basing

Stocks trading near pivot on improving technical characteristics

Symbol	Name	Mkt Val, USD (Mil)	Composite Rating
FORT.SE	Fortnox Ab	4,207	98
PLWP.FR	Planisware	2,018	96

## Transportation

### European Focus List

O'Neil recommendations

Symbol	Name	Mkt Val, USD (Mil)	Focus List Since
DSV.DK	Dsv	51,932	16-10-24
INPW.NL	Inpost	8,773	16-5-24

### Breaking Out This Week

Stocks breaking out from consolidation

Symbol	Name	Mkt Val, USD (Mil)	Composite Rating
RYA.IE	Ryanair Holdings	22,258	85
PST.IT	Poste Italiane	19,003	86

### Laggards

Stocks showing technical weakness

Symbol	Name	Mkt Val, USD (Mil)	A/D, Nbr	Rtg, Cur Wk
SRAIL.CH	Stadler Rail	2,282		-53
DHLX.DE	Deutsche Post (Xet)	45,141		-37
KNIN.CH	Kuehne Und Nagel Internat	28,983		-30

### Top Rated

Stocks displaying the best Composite rating

Symbol	Name	Mkt Val, USD (Mil)	Composite Rating
LOGI.ES	Logista Hold	4,212	95
IAG.GB	Intl.Cons.Airl.Gp.(Cdi)	17,949	94
DSA.DK	A P Moller Maersk A	16,481	93
IDL.FR	Id Logistics Group	2,689	92
DSB.DK	A P Moller Maersk B	10,684	90
HOAH.NO	Hoegh Autoliners	2,189	90
EZJ.GB	Easyjet	5,549	89
DSV.DK	Dsv	51,932	87
INPW.NL	Inpost	8,773	87
IDS.GB	International Distribution	4,360	87
PST.IT	Poste Italiane	19,003	86
RYA.IE	Ryanair Holdings	22,258	85
CKN.GB	Clarkson	1,585	84
WWI.NO	Wilhs.Wilhelmsen Hdq.'A'	1,245	80
CADE.NO	Cadeler	2,121	79

### Basing

Stocks trading near pivot on improving technical characteristics

Symbol	Name	Mkt Val, USD (Mil)	Composite Rating
CKN.GB	Clarkson	1,585	84

# European Weekly Summary

## Utility

### European Focus List

O'Neil recommendations

Symbol	Name	Mkt Val, USD (Mil)	Focus List Since
--------	------	--------------------	------------------

### Breaking Out This Week

Stocks breaking out from consolidation

Symbol	Name	Mkt Val, USD (Mil)	Composite Rating
--------	------	--------------------	------------------

### Laggards

Stocks showing technical weakness

Symbol	Name	Mkt Val, USD (Mil)	A/D, Nbr	Rtg, Cur Wk
EVN.AT	Evn	4,430		-50

### Top Rated

Stocks displaying the best Composite rating

Symbol	Name	Mkt Val, USD (Mil)	Composite Rating
ELE.ES	Endesa	23,903	92
DRX.GB	Drax Group	3,111	91
TEP.GB	Telecom Plus	1,811	84
SVT.GB	Severn Trent	10,161	82
IBE.ES	Iberdrola	90,442	81
A2A.IT	A2a	7,285	79
BKW.CH	Bkw	9,218	78
VIE.FR	Veolia Environ	22,115	77
ENGI.FR	Engie	39,254	75
ACE.IT	Acea	4,094	74
TRN.IT	Terna Rete Elettrica Naz	16,864	73
REN.PT	Ren Redes Energeticas T	1,682	72
ENEL.IT	Enel	75,071	70
UU.GB	United Utilities Group	9,476	68
IG.IT	Italgas	4,759	67

### Basing

Stocks trading near pivot on improving technical characteristics

Symbol	Name	Mkt Val, USD (Mil)	Composite Rating
--------	------	--------------------	------------------

### Disclaimer

William O'Neil + Co. Incorporated offers the world's leading institutional investment managers a distinct blend of quantitative, fundamental, and technical expertise in global stock buy-and-sell recommendations. Its core method profiles stocks displaying the characteristics of outperformance proven persistent over market history—drawn from the firm's industry-leading database.

William O'Neil + Co. Incorporated is an SEC Registered Investment Advisor. William O'Neil India Pvt Ltd Associates and William O'Neil Shanghai Pvt. Ltd. may develop research content on behalf of William O'Neil + Co. Our content should not be relied upon as the sole factor in determining whether to buy, sell, or hold a stock. For important information about reports, our business, and legal notices (including our Privacy Policy), please go to [williamoneil.com/legal](http://williamoneil.com/legal).

#### Limitations of Use of Stock Charts

Our content and stock charts, which provide certain current and historical information, should not be relied upon as the sole factor in determining whether to buy, sell, or hold a stock. The charts provide certain current and historical information, but are not a substitute for a comprehensive analysis of the individual stocks.

#### No Investment Banking

William O'Neil + Co. and its affiliates do not engage in investment banking and do not make a market in any securities. Neither William O'Neil + Co. nor any of its affiliates have, during the past 12 months, received any compensation from any of the companies discussed in this report. None of the companies discussed in this report are, or have been during the past 12 months, clients of William O'Neil + Co. or its affiliates.

#### Proprietary Positions

William O'Neil + Co. does not maintain proprietary positions in any securities. Employees of William O'Neil + Co. and its affiliates may now or in the future own positions in the companies discussed in this report. As of the end of the month immediately preceding the date of publication of such reports, none of such employees or affiliates beneficially owned 1% or more of the common equity securities of any of the companies discussed in this report.

© 2024, William O'Neil + Company, Inc. All rights reserved.

No part of this material may be copied or duplicated in any form by any means or redistributed without the prior written consent of William O'Neil + Co.