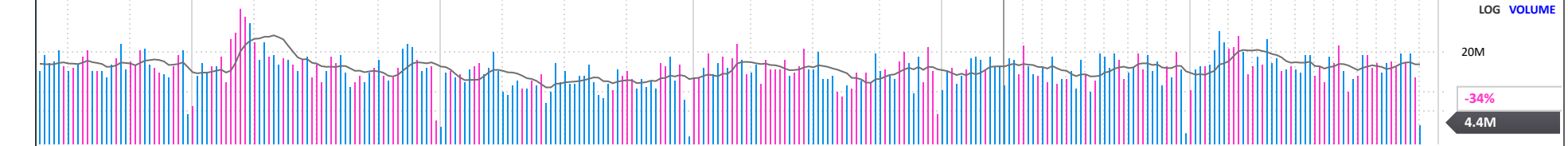
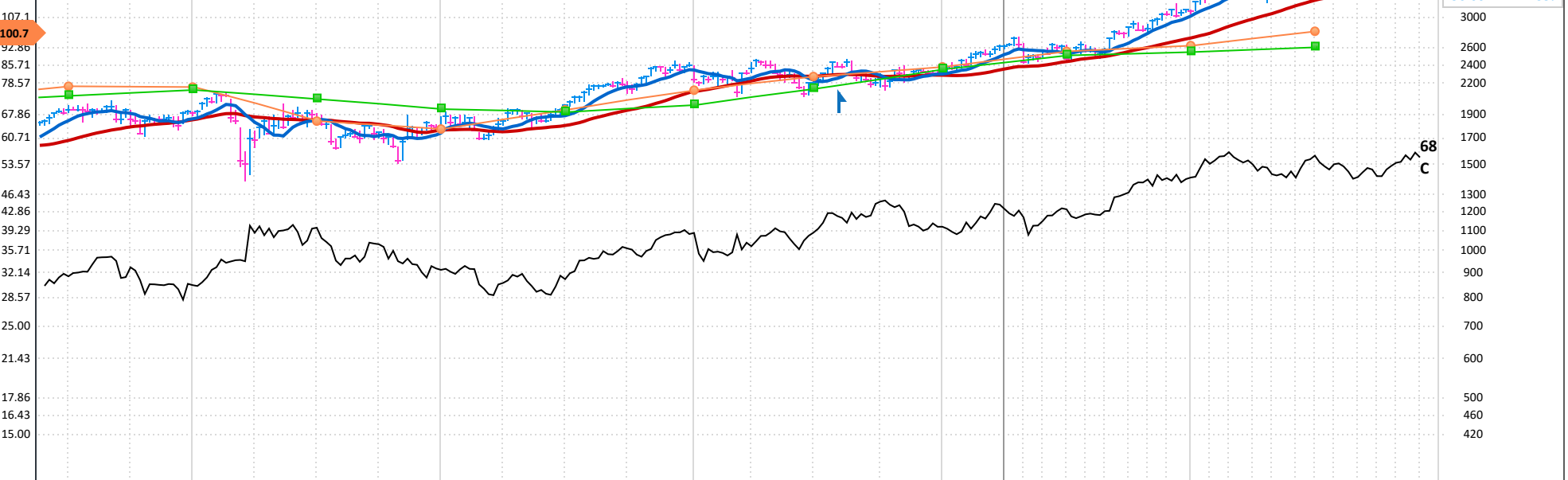


EPS 28x	442071665500	relx.com	London, UNITED KINGDOM Inc 1903	MGMT owns --	OH 0%	LOG (Fixed)	PRICE								
428.6	RELX Plc engages in provision of information and analytics solutions for professional and business customers across industries. It operates through the following business segments: Scientific, Technical Medical; Risk Business Analytics; Legal; and Exhibitions. The Scientific, Technical Medical segment is a global information analytics business that helps institutions and professionals advance healthcare, open science, and improve performance for the benefit of humanity. The Risk Business Analytics segment provides customers with solutions and decision tools that combine public and industry specific content with advanced technology and analytics to assist them in evaluating and predicting risk and enhancing operational efficiency. The Legal segment is a global provider of legal, regulatory and business information and analytics that helps customers increase productivity, improve decision making and outcomes and advance the rule of law around the world. The Exhibitions segment is an event business, enhancing the effect of face to face through data and digital tools. The company was founded by Albert Edward Reed in 1903 and is headquartered in London, the United Kingdom. LESS														
392.9															
357.1															
321.4															
285.7															
250.0	ANNUAL - DEC END	2015	2016	2017	2018	2019	2020	2021	2022	2023	2024 Estimate	2025 Estimate			
214.3	EPS GBX	47.80	56.30	81.61	71.92	77.44	63.54	76.30	85.17	94.14	121.07	131.28	8%		
178.6	CASH FLOW/SHR GBX	68.81	82.99	95.91	101.22	108.53	83.96	104.98	126.16	130.23	Earnings Growth Rate		Sales Growth Rate		
164.3	PRETAX MARGIN %	21%	21%	23%	23%	21%	24%	25%	25%	25%	2022-24	12% (1 Stability)	11%		
150.0	RETURN ON EQUITY %	47%	52%	72%	61%	67%	57%	55%	47%	49%	2020-24	7% (9 Stability)	5%		
135.7	SALES % CHANGE	3%	15%	6%	2%	5%	-10%	2%	18%	7%	COMP RATING	91	SMR RATING	A	
121.4	SALES (MIL) GBX	597K	690K	734K	749K	787K	711K	724K	855K	916K	INV T/O	11.2x 84			
107.1	WEEKLY	Oct 11	Oct 18	Oct 25	Nov 1	Nov 8	Nov 15	Nov 22	Nov 29	Dec 3	DEBT %	2021-23	184%	155%	150%
92.86	DATAGRAPH RATING	61	64	65	64	60	62	63	63	62	TAX RATE	2021-23	18%	23%	23%
85.1	AVG DAILY VOL (000)	3,123	2,966	2,996	3,092	3,228	3,307	3,326	3,188	3,126	BACKLOG	2021-23	--	--	--
78.75	UP/DOWN VOLUME	1.0	1.4	1.3	1.3	1.3	1.1	1.1	1.1	1.2	R & D	--	BK VAL	20.38x '23	
67.86	ACCUM/DIST RATING	-16	18	35	48	28	-10	0	-5	-5	DIV GBX	60.00 (1.6%)	DIV GR RT+7%	(2)	
60.71	RELATIVE STRENGTH	64	72	68	70	66	62	69	68	68	BETA	0.59(14.00)	ALPHA	0.05 (0.05)	
53.57	GROUP RANK	50	47	35	47	81	71	64	61	68	2023 EMPLOYEES	36,500 (2%)			



	FINANCIALS	c 19	Mar 20	Jun 20	Sep 20	Dec 20	Mar 21	Jun 21	Sep 21	Dec 21	Mar 22	Jun 22	Sep 22	Dec 22	Mar 23	Jun 23	Sep 23	Dec 23	Mar 24	Jun 24	Sep 24	Dec 2	P/E	37
	EPS (GBX)	.52		28.44		35.10		34.46		41.84		39.54		45.63		46.02		48.12		52.59			2024 Est.:	31.0
	EPS % CHANGE	1%		-29%		-6%		+21%		+19%		+15%		+9%		+16%		+5%		+14%			2025 Est.:	28.6
	SALES (MIL GBX)	0.0		350,100.0		360,900.0		339,400.0		385,000.0		396,900.0		458,400.0		449,900.0		466,200.0		464,100.0			5-yr High:	37
	SALES % CHANGE	-4%		-10%		-9%		-3%		+7%		+17%		+19%		+13%		+2%		+3%			5-yr Low:	19
	EPS % SURPRISE	1%		+8.5%		+8.3%		-0.7%				0.0%		+2.2%		+5.2%		+1.4%		+0.2%			vs Ind. Avg.:	0.6x
	FUNDS	993	2,073	2,167	2,158	2,129	2,180	2,208	2,255	2,415	2,524	2,650	2,683	2,778	2,773	2,847	2,953	3,097	3,250	3,332				
	SHARES HELD BY FUNDS 3M		886M	904M	926M	945M	953M	977M	989M	1B	1B	1B	999M	1B	1B	1B	1B	1B	983M	965M				