

# European Weekly Summary

June 24, 2024

## Key points:

- *European markets saw a slight uptick last week, recovering some of the previous week's losses. Most markets remain below their respective 50-day moving averages (50-DMA), except for Denmark, the Netherlands, and Switzerland, which are testing support at their 21-DMA. For a more positive outlook, markets need to reclaim and consolidate above their 50-DMA without accumulating additional distribution days. All sectors, except Health Care and Consumer Staple, showed negative short-term momentum.*
- *We remain cautious as most indices are below their 50-DMA. France and Italy are notably weak, trading 9–10% off their 52-week highs, with the 200-DMA as the next support level. Denmark, the Netherlands, and Switzerland maintain a constructive stance, supported by their short-term moving averages. We advise reducing positions in stocks falling below key support levels and increasing exposure to defensive sectors within stronger markets.*
- *Sectors closed mostly positive last week, pairing some of the losses after a strong decline in the prior week. Retail and Financial led gains, while Health Care and Consumer Staple lagged. On our rotation graph, sectoral performance is broadly negative, with most sectors showing deterioration in short-term momentum. Defensive sectors, including Consumer Staple and Health Care, were an outlier with positive short-term momentum. Health Care continues to remain steady and has been trending in the best quadrant for the last few weeks. Technology also showed positive momentum. Cyclical joined Financial, Retail, and Utility in the worst quadrant with negative short-term momentum.*
- **Sector Score Cards – Stocks of Interest (Top-rated names with best technical setups - refer pages 9–20):** With most markets in a downtrend, breakout opportunities are limited. However, several stocks are basing and should be monitored for potential uptrends and leadership emergence.
  - **Capital Equipment:** *Indutrade (INDT.SE)* and *Huhtamaki (HUIF.FI)* are forming bases. *VAT Group (VACN.CH – EFL constituent)* is actionable with support at the rising 21-DMA.
  - **Financial:** *Deutsche Boerse (DB1X.DE)* is close to a pivot at €194.55, trading 1% away.
  - **Health Care:** *Zealand Pharma (ZEA.DK)* is breaking out of a 14-week consolidation base. *Ambu (AMB.DK)* is overcoming a long resistance level at DKK123–125.
  - **Retail:** *Class Ohlson B (CLAS.SE)* is breaking out of a 72-day cup formation. *Inditex (IND.ES, EFL constituent)* is breaking above the €47 resistance level and is actionable.
  - **Technology:** *ASML (ASML.NL, EFL constituent)* is actionable. *Be Semi (BESI.NL, EFL constituent)* is forming the handle of a cup-with-handle formation, trading 5% from the pivot at €162.
- **European Focus List Update:**
  - **Addition:** None.
  - **Removal:** None.

Prepared by:

Tristan d'Aboville, Executive Director – Research Analyst

[tristan.daboville@williamoneil.com](mailto:tristan.daboville@williamoneil.com) | Direct: +44 20 3178 7125 | Mobile: +44 77 0344 5260

# European Weekly Summary

## Europe's Main Index Recovers Above 50-DMA

- The Stoxx 600, after a sharp decline, gained 0.8% last week and retook its 50-DMA after a week of high volatility amid European Parliament elections. It remains in an Uptrend Under Pressure.
- Support for the index: 50-DMA (0.3% below), 100-DMA (1.7% below), and 200-DMA (6.3% lower).
- Among the 16 indices we cover, two are in a Confirmed Uptrend, 10 indices are in a Rally Attempt. Three indices are in an Uptrend Under Pressure and Sweden is in a Downtrend. The average distribution day count is currently at 5.6.
- We are cautious about the overall market as most indices are trading below the 50-DMA. Among the markets, France and Italy are the weakest, trading 9–10% off their 52-week highs, with the 200-DMA as the next support. Denmark, the Netherlands, and Switzerland are still constructive, with support at their short-term moving averages. We recommend investors reduce positions in names that are breaking below logical levels of support. Increase exposure to defensive sectors within constructive markets.

## Sector Rotation:

- On our rotation graph, sectoral performance is broadly negative, with most sectors showing deterioration in their short-term momentum.
- Defensive sectors, including Consumer Staple and Health Care, were outliers with positive short-term momentum. Health Care continues to remain steady and has been trending in the best quadrant for the last few weeks. Technology also showed positive momentum.
- Cyclical joined Financial, Retail, and Utility in the worst quadrant with negative short-term momentum.

## European Focus List Update

- **Addition:** None.
- **Removal:** None.
- Actionable names include VAT Group (VACN.CH), Relx (REL.GB), Inditex (IND.ES), ASML Holding (ASML.NL), Technogym (TGYM.IT), and Siegfried 'R' (SFZN.CH).

## Sector Heat Map: Average Perf. - Market Cap Average Weighted

(Market Cap > \$1BN & ADV > \$1M)

Sectors	5 Days	4 Weeks	8 Weeks	13 Weeks	26 Weeks	52 Weeks
Retail	1.9%	-0.1%	1.7%	1.0%	6.4%	15.6%
Financial	1.6%	-3.0%	1.2%	0.8%	10.7%	26.1%
Utility	1.5%	-0.9%	1.8%	3.5%	-3.8%	1.5%
Energy	1.4%	-2.9%	-5.4%	1.0%	1.2%	11.6%
Capital Equipment	1.1%	-4.1%	1.4%	0.4%	15.5%	28.7%
Transportation	0.9%	-1.6%	1.3%	6.9%	-2.1%	2.2%
Basic Material	0.9%	-4.4%	-1.4%	0.6%	2.1%	12.7%
Technology	0.8%	2.0%	7.2%	5.7%	19.6%	32.1%
Consumer Cyclical	0.6%	-3.9%	-5.9%	-7.9%	3.5%	4.7%
Health Care	-0.4%	1.7%	5.0%	6.6%	16.5%	22.1%
Consumer Staple	-0.4%	-1.0%	1.5%	2.2%	1.0%	-1.8%

Source: William O'Neil + Co.

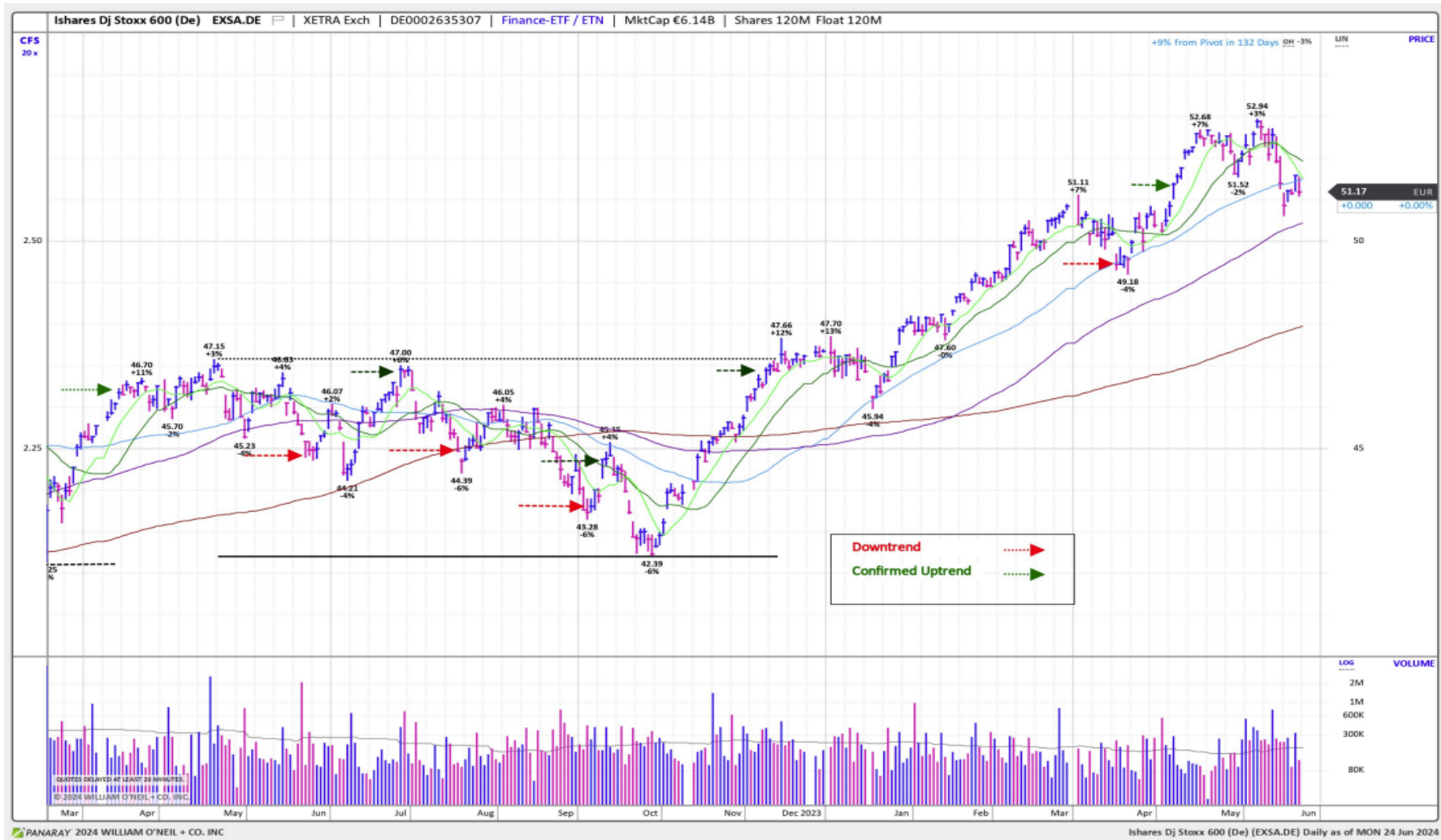
## Market Conditions

## O'Neil Methodology

Country	Market Condition	Distribution Days
France	Rally Attempt	N/A
Germany	Rally Attempt	N/A
UK	Rally Attempt	N/A
Stoxx600	UnderPressure	5
Denmark	Confirmed Uptrend	6
Ireland	Rally Attempt	N/A
Finland	Rally Attempt	N/A
Norway	UnderPressure	3
Sweden	Correction	N/A
Switzerland	UnderPressure	5
Austria	Rally Attempt	N/A
Italy	Rally Attempt	N/A
Portugal	Rally Attempt	N/A
Spain	Rally Attempt	N/A
Belgium	Rally Attempt	N/A
Netherlands	Confirmed Uptrend	9
<b>All Europe (Average)</b>		<b>5.6</b>

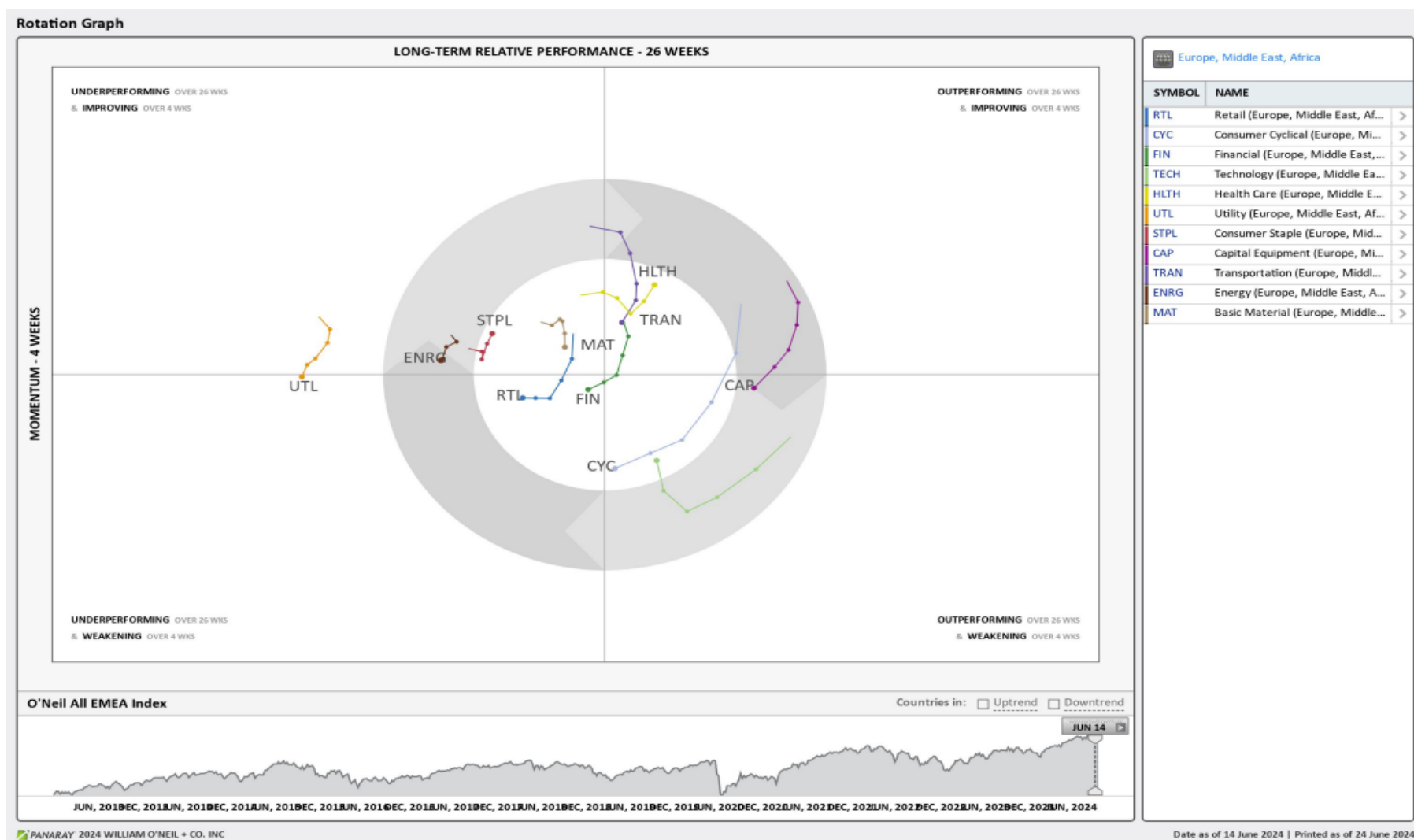
Source: William O'Neil + Co.

## iShares Dj Stoxx 600 (EXSA.DE) – Daily Datagraph®



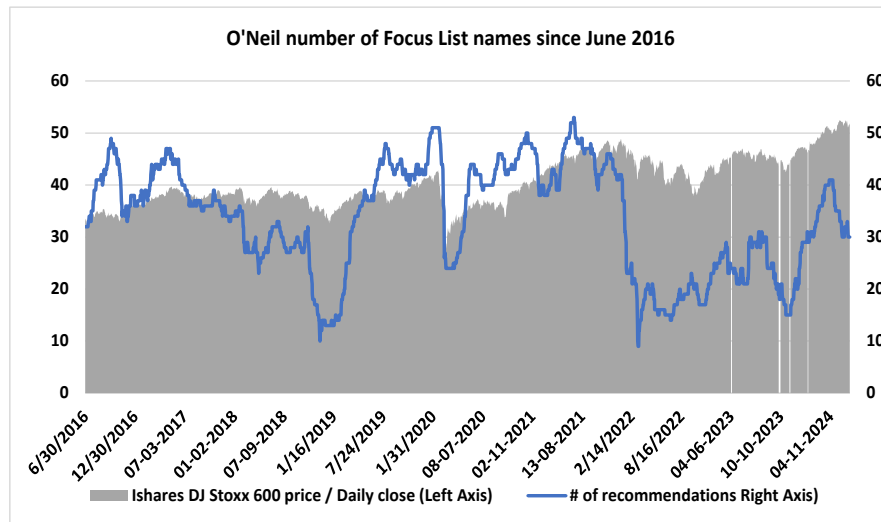
Source: William O'Neil + Co.

## EMEA Rotation Chart

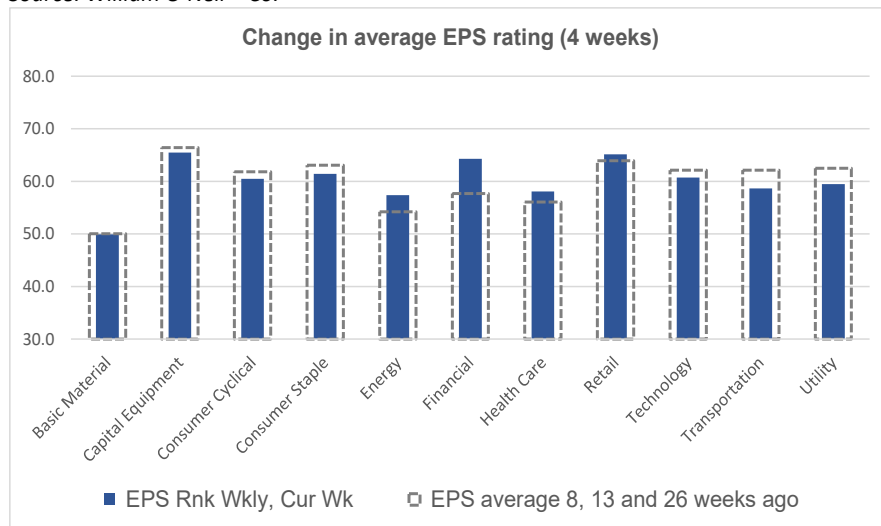


Source: William O'Neil + Co.

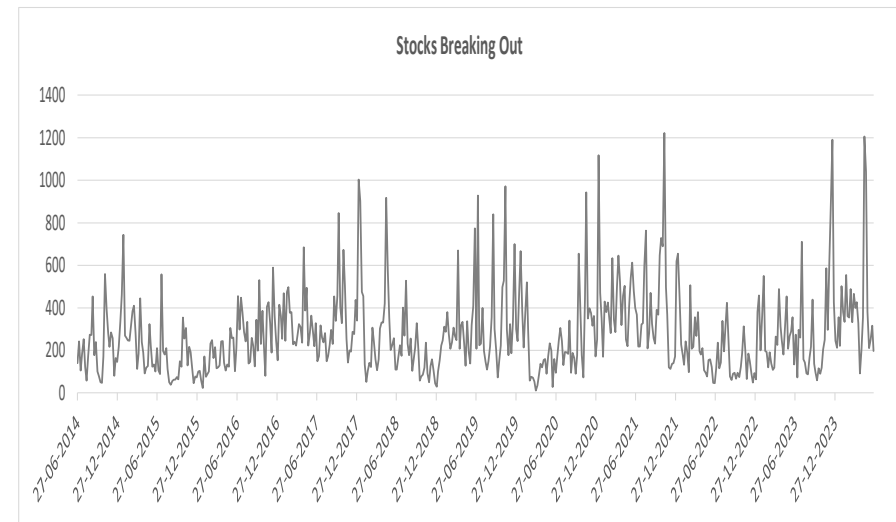
## Key Metric Changes: EPS, RS, # of EFL Names & Breakouts



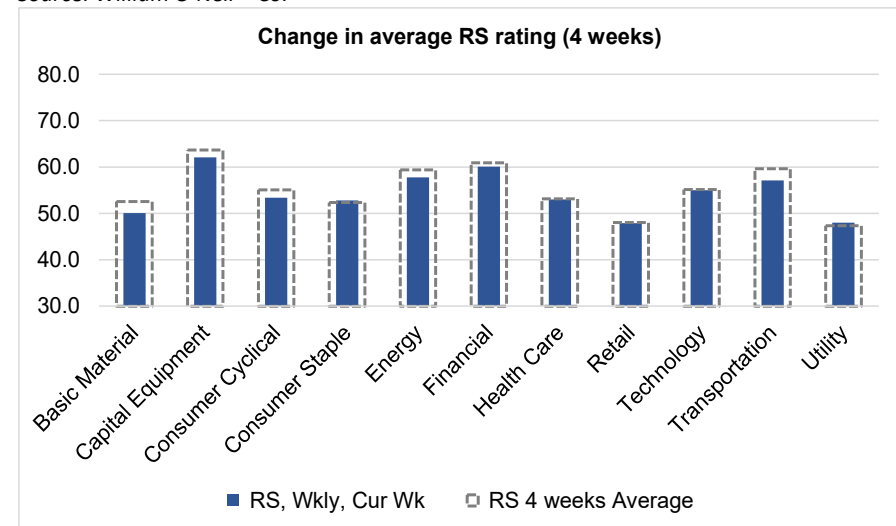
Source: William O'Neil + Co.



Source: William O'Neil + Co.



Source: William O'Neil + Co.



Source: William O'Neil + Co.

### How To Read The Sector Card

---

#### European Focus List

O'Neil Recommendations

The **European Focus List (EFL)** is a proprietary list of long ideas that fit the fundamental and technical criteria of the O'Neil Methodology.

#### Top Rated

Stocks displaying the best Composite rating

The **Composite Rating** combines the EPS Rank, Relative Strength Rating, Industry Group Rank, SMR Rating, Accumulation/Distribution Rating, and the stock's percent off its 52-week high. More weight is placed on EPS Rank and Relative Strength Ratings. The resulting rating of technical and fundamental factors is compared against all other stocks in the trading country and assigned a rating from 1 to 99, with 99 being the best. A rating of 90 means the stock has outperformed 90% of all other stocks.

#### Outperforming

Stocks breaking out from pivot

We recommend buying stocks at the **breakout level**. A breakout is a price movement of the security through an identified level of resistance (pivot point) after forming a consolidation base. Our proprietary chart patterns are based on over 50 years of our active research into the behavior of equities.

#### Early Basing

Stocks trading near pivot on improving technical characteristics

**Stock near pivot point** (last line of resistance) with improving technical characteristics and above average fundamental profile based on O'Neil proprietary ratings and rankings.

#### Laggards

Stocks in which investors are losing interest

**Laggards** are stocks showing technical weakness. We believe these stocks are laggards relative to their own domestic markets and, if owned, need to be reviewed carefully as they may be vulnerable to further downside risk and underperformance.



# European Weekly Summary

WILLIAM O'NEIL+CO.

## Basic Material

### European Focus List

O'Neil recommendations

Symbol	Name	Mkt Val, USD (Mil)	Focus List Since
--------	------	-----------------------	------------------

### Breaking Out This Week

Stocks breaking out from consolidation

Symbol	Name	Mkt Val, USD (Mil)	Composite Rating
--------	------	-----------------------	------------------

### Laggards

Stocks showing technical weakness

Symbol	Name	Mkt Val, USD (Mil)	A/D, Nmb	Rtg, Cur	Wk
LXSX.DE	Lanxess (Xet)	2,016			-55
AKE.FR	Arkema	6,732			-48
TEN.IT	Tenaris	17,829			-47
TKAX.DE	Thyssenkrupp (Xet)	2,780			-46
IMCD.NL	Imcd Group	8,080			-37
CRDA.GB	Croda International	7,140			-37
VAS.AT	Voestalpine	4,784			-36
APAM.NL	Aperam	1,944			-33
BNRX.DE	Brenntag (Xet)	9,924			-31
SSAA.SE	Ssab A	1,689			-31
TES.BE	Tessenderlo Group	2,194			-30
BASX.DE	Basf (Xet)	43,090			-29
SZGX.DE	Salzgitter (Xet)	1,177			-28
YARA.NO	Yara International	7,251			-27
MT.NL	Arcelormittal	20,034			-26
OUTO.FI	Outokumpu 'A'	1,710			-26

### Top Rated

Stocks displaying the best Composite rating

Symbol	Name	Mkt Val, USD (Mil)	Composite Rating
CEY.GB	Centamin	1,698	97
GMV.CH	Givaudan 'N'	44,564	96
HILS.GB	Hill & Smith Plc	1,968	94
VCT.FR	Vicat	1,618	86
SOL.IT	Sol	3,099	85
NK.FR	Imerys	3,201	84
SY1X.DE	Symrise (Xet)	16,889	83
KEMR.FI	Kemira	3,797	82
SOL.BE	Solvay	3,591	82
NZY.DK	Novozymes B	26,037	79
BRG.NO	Borregaard	1,889	79
NA.SE	Nolato B	1,343	79
ROBT.FR	Robertet	1,917	78
ELM.GB	Elementis	1,074	77
VALM.FI	Valmet	5,318	75

### Basing

Stocks trading near pivot on improving technical characteristics

Symbol	Name	Mkt Val, USD (Mil)	Composite Rating
VALM.FI	Valmet	5,318	75

# European Weekly Summary

WILLIAM O'NEIL+CO.

## Capital Equipment

### European Focus List

O'Neil recommendations

Symbol	Name	Mkt Val, USD (Mil)	Focus List Since
QT@F.FR	Schneider Electric	1,39,056	12-6-24
SGM.FR	Safran	92,515	17-5-23
REL.GB	Relx	84,954	4-8-22
BA.GB	Bae Systems	51,259	15-9-23
RR.GB	Rolls-Royce Holdings	50,294	15-11-23
ALF.SE	Alfa Laval	18,308	20-3-24
VACN.CH	Vat Group	16,767	12-12-23
SAAB.SE	Saab B	12,199	16-1-24
NKT.DK	Nkt	4,528	28-5-24

### Breaking Out This Week

Stocks breaking out from consolidation

Symbol	Name	Mkt Val, USD (Mil)	Composite Rating
GREN.ES	Grenergy Renovables	1,065	73

### Laggards

Stocks showing technical weakness

Symbol	Name	Mkt Val, USD (Mil)	A/D, Nmbr Rtg, Cur Wk
ENT.FR	Bouygues	12,755	-64
DG@F.FR	Vinci	64,178	-51
SIGN.CH	Sig Group N	6,992	-50
UMI.BE	Umicore	3,739	-41
WACX.DE	Wacker Neuson (Xet)	1,178	-41
GLJX.DE	Grenke N (Xet)	1,037	-36
BEKB.BE	Bekaert (D)	2,356	-31
MAYR.AT	Mayr-Melnhof Karton	2,408	-28
SAND.SE	Sandvik	25,811	-27

### Top Rated

Stocks displaying the best Composite rating

Symbol	Name	Mkt Val, USD (Mil)	Composite Rating
KOG.NO	Kongsberg Gruppen	14,865	99
HDJ.NL	Arcadis	5,861	99
NXS.FR	Nexans	4,987	99
MYCR.SE	Mycronic	4,145	99
MT.IT	Marie	2,535	99
PUB.FR	Publicis Groupe	27,656	98
SPIE.FR	Spie	6,225	98
LAGR.SE	Lagercrantz Group B	3,492	98
QQ.GB	Qinetiq Group	3,241	98
KLR.GB	Keller	1,180	98
QT@F.FR	Schneider Electric	1,39,056	97
INF.GB	Informa	14,592	97
SAAB.SE	Saab B	12,199	97
AQ.SE	Aq Group	1,253	97
SDIH.SE	Sdiptech	1,199	97

### Basing

Stocks trading near pivot on improving technical characteristics

Symbol	Name	Mkt Val, USD (Mil)	Composite Rating
INDT.SE	Indutrade	9,729	86
HUIF.FI	Huhtamaki	4,346	67
VEI.NO	Veidekke	1,465	82
BUFA.SE	Bufab	1,411	78

# European Weekly Summary

WILLIAM O'NEIL+CO.

## Consumer Cyclical

### European Focus List

O'Neil recommendations

Symbol	Name	Mkt Val, USD (Mil)	Focus List Since
RACE.IT	Ferrari (Mil)	75,493	6-3-23
ADXS.DE	Adidas (Xet)	41,920	20-11-23
MUGR.SE	Munters Group	3,652	15-12-23
TGYM.IT	Technogym	2,060	13-2-24

### Breaking Out This Week

Stocks breaking out from consolidation

Symbol	Name	Mkt Val, USD (Mil)	Composite Rating
--------	------	--------------------	------------------

### Laggards

Stocks showing technical weakness

Symbol	Name	Mkt Val, USD (Mil)	A/D, Nmbr	Rtg, Cur Wk
KIN.BE	Kinepolis Group	1,056		-61
BOSSX.DE	Boss (Hugo) (Xet)	3,254		-55
BMW3X.DE	Bmw Pref. (Xet)	5,163		-54
STMX.DE	Stabilus (Xet)	1,166		-53
P911X.DE	Dr Ing Hc F Porsche Ag (.	33,734		-50
SFER.IT	Salvatore Ferragamo	1,601		-50
VOWX.DE	Volkswagen (Xet)	35,435		-48
BRE.IT	Freni Brembo	3,686		-48
STL.IT	Stellantis	64,414		-45
BMWX.DE	Bmw (Xet)	54,099		-43
VOW3X.DE	Volkswagen Pref. (Xet)	23,086		-41
BFIT.NL	Basic-Fit	1,390		-41
CDI.FR	Christian Dior	1,30,961		-40
MBGX.DE	Mercedes-Benz Group (X	72,825		-33
DOMT.SE	Dometic Group	2,116		-33
FGP.GB	First Group	1,205		-33
SIX2X.DE	Sixt (Xet)	2,237		-32
MMT.FR	M6-Metropole Tv	1,646		-32
BERT.FR	Forvia	2,541		-31
POM.FR	Opmobility	1,446		-30
MATI.FR	Bollere	17,506		-29
RRTLX.DE	Rtl Group	4,815		-29
FR.FR	Valeo	2,635		-29
TRI.FR	Trigano	2,431		-27
GESP.ES	Gestamp Automocion	1,745		-27
VOCB.SE	Volvo Car B	8,822		-26
NIBE.SE	Nibe Industrier	8,271		-26

### Top Rated

Stocks displaying the best Composite rating

Symbol	Name	Mkt Val, USD (Mil)	Composite Rating
BZU.IT	Buzzi	7,638	97
RENU.FR	Renault	15,387	96
VGBF.SE	Vbg Group B	1,054	96
ADSH.ES	Aedas Homes	1,009	96
ROA.DK	Rockwool A	3,893	95
FAN.GB	Volution Group	1,134	95
A3M.ES	Atresmedia Corp	1,097	94
RHIM.GB	Rhi Magnesita Nv	2,020	93
JFN.CH	Jungfraubahn 'R'	1,251	93
SKIS.SE	Skistar B	1,035	92
AENA.ES	Aena Sme	30,106	91
FUTR.GB	Future	1,442	90
RMS.FR	Hermes Intl.	2,43,942	89
LIFC.SE	Lifco B	11,625	89
TRN.GB	Trainline Plc.	1,910	89

### Basing

Stocks trading near pivot on improving technical characteristics

Symbol	Name	Mkt Val, USD (Mil)	Composite Rating
PERSON.GB	Pearson	8,227	65

# European Weekly Summary

WILLIAM O'NEIL+CO.

## Consumer Staple

### European Focus List

O'Neil recommendations

Symbol	Name	Mkt Val, USD (Mil)	Focus List Since
BEIX.DE	Beiersdorf (Xet)	37,542	21-9-23

### Breaking Out This Week

Stocks breaking out from consolidation

Symbol	Name	Mkt Val, USD (Mil)	Composite Rating
--------	------	--------------------	------------------

### Laggards

Stocks showing technical weakness

Symbol	Name	Mkt Val, USD (Mil)	A/D, Nbr Rtg, Cur Wk
RCO.FR	Remy Cointreau	4,217	-28
RCD.FR	Pernod-Ricard	35,740	-26

### Top Rated

Stocks displaying the best Composite rating

Symbol	Name	Mkt Val, USD (Mil)	Composite Rating
LBAK.BE	Lotus Bakeries	8,725	98
BVIC.GB	Britvic	3,439	98
HFG.GB	Hilton Food Group	1,018	96
AAK.SE	Aak	7,544	95
PFD.GB	Premier Foods	1,839	94
BAKK.GB	Bakkavor Group Plc	1,048	93
OR@F.FR	L'Oreal	2,51,953	91
CCH.GB	Coca-Cola Hbc (Cdi)	12,420	88
RBR.DK	Royal Unibrew	4,077	88
CWK.GB	Cranswick	3,014	88
ESSI.SE	Essity B	16,902	87
ORK.NO	Orkla	8,386	86
LISP.CH	Choc.Lindt & Spruengli Pa	12,594	85
INTR.IT	Intercos	1,649	85
ULVR.GB	Unilever (Uk)	1,39,931	84

### Basing

Stocks trading near pivot on improving technical characteristics

Symbol	Name	Mkt Val, USD (Mil)	Composite Rating
--------	------	--------------------	------------------

# European Weekly Summary

WILLIAM O'NEIL+CO.

## Energy

### European Focus List

O'Neil recommendations

Symbol	Name	Mkt Val, USD (Mil)	Focus List Since
--------	------	-----------------------	------------------

### Breaking Out This Week

Stocks breaking out from consolidation

Symbol	Name	Mkt Val, USD (Mil)	Composite Rating
--------	------	-----------------------	------------------

### Laggards

Stocks showing technical weakness

Symbol	Name	Mkt Val, USD (Mil)	A/D, Nmbr	Rtg, Cur Wk
ENI.IT	Eni	48,944		-43
OMV.AT	Omv	13,718		-41
FP.FR	Totalenergies	1,58,367		-34
GTT.FR	Gtt	4,783		-32
TGS.NO	Tgs	1,490		-32

### Top Rated

Stocks displaying the best Composite rating

Symbol	Name	Mkt Val, USD (Mil)	Composite Rating
ESSO.FR	Esso	2,070	97
MAU.FR	Maurel Et Prom	1,320	96
DOFG.NO	Dof Group	1,460	95
NEOP.FR	Neoen	6,054	94
ODDR.NO	Odfjell Drilling	1,234	94
SPM.IT	Saipem	4,596	93
VLR.FR	Vallourec	3,686	92
SCAT.NO	Scatec	1,343	92
SEPL.GB	Seplat Ptl.Dev. (Lon) (Di)	1,456	90
HBR.GB	Harbour Energy	2,989	89
DEMG.BE	Deme Group	4,374	88
VLTS.FR	Voltaia	1,401	88
SUBC.NO	Subsea 7	5,658	87
WG.GB	Wood Group (John)	1,718	86
GTT.FR	Gtt	4,783	85

### Basing

Stocks trading near pivot on improving technical characteristics

Symbol	Name	Mkt Val, USD (Mil)	Composite Rating
--------	------	--------------------	------------------

# European Weekly Summary

WILLIAM O'NEIL+CO.

## Financial

### European Focus List

O'Neil recommendations

Symbol	Name	Mkt Val, USD (Mil)	Focus List Since
EQT.SE	Eq	37,137	22-2-24
TLXX.DE	Talanx Aktgsf. (Xet)	20,433	3-6-24
SQN.CH	Swissquote 'R'	4,870	16-1-24

### Breaking Out This Week

Stocks breaking out from consolidation

Symbol	Name	Mkt Val, USD (Mil)	Composite Rating
CMBN.CH	Cembra Money Bank N O	2,609	82
HVPE.GB	Harbourvest Global	2,404	48
SNB.DK	Spar Nord Bank	2,288	96

### Laggards

Stocks showing technical weakness

Symbol	Name	Mkt Val, USD (Mil)	A/D, Nmbr	Rtg, Cur Wk
WISE.GB	WISE A	8,813		-48
GRI.GB	Grainger	2,229		-46
ADP.FR	Adp	12,169		-43
SGKN.CH	St Galler Kantonalbank	2,950		-43
GREEN.CH	Csui.Rlst.Fd.Grn. Pr.A	2,515		-43
BNP.FR	Bnp Paribas	71,740		-38
BEKN.CH	Berner Kantonalbank	2,440		-38
MIDI.FR	Axa	74,220		-36
ALLFG.NL	Allfunds Group	3,405		-36
SGE.FR	Societe Generale	18,976		-34
CAIM.AT	Ca Im.Anlagen	3,286		-32
BCVN.CH	Bc Vaud N	9,296		-31
RAI.AT	Raiffeisen Bank Intl.	5,765		-29
ASHM.GB	Ashmore Group	1,473		-29
ADYE.NL	Adyen	37,561		-27

### Top Rated

Stocks displaying the best Composite rating

Symbol	Name	Mkt Val, USD (Mil)	Composite Rating
A5G.IE	Aib Group	12,801	99
GCO.ES	Grupo Catalana Occident	5,024	99
ALPH.GB	Alpha Group Plc	1,333	99
ENX.FR	Euronext	10,307	98
BEZ.GB	Beazley	5,757	98
BPE.IT	Bper Banca	6,954	97
EFGN.CH	Efg International N	4,570	97
SYD.DK	Sydbank	2,910	97
PLUS.GB	Plus500 (Di)	2,180	97
AJB.GB	AJ Bell Plc	2,032	97
IHP.GB	IntegraFin Holdings Plc	1,483	97
CMCX.GB	Cmc Markets	1,122	97
TLXX.DE	Talanx Aktgsf. (Xet)	20,433	96
BP.IT	Banco Bpm	9,825	96
BMED.IT	Banca Mediolanum	8,350	96

### Basing

Stocks trading near pivot on improving technical characteristics

Symbol	Name	Mkt Val, USD (Mil)	Composite Rating
DB1X.DE	Deutsche Boerse (Xet)	39,089	87
SAMA.FI	Sampo 'A'	21,583	85
SYD.DK	Sydbank	2,910	97

# European Weekly Summary

WILLIAM O'NEIL+CO.

## Health Care

### European Focus List

O'Neil recommendations

Symbol	Name	Mkt Val, USD (Mil)	Focus List Since
NON.DK	Novo Nordisk 'B'	4,80,138	17-4-20
YPSN.CH	Ypsomed Holding R	5,871	8-9-23
SFZN.CH	Siegfried 'R'	4,746	15-12-23
CAMX.SE	Camurus	3,207	3-6-24

### Breaking Out This Week

Stocks breaking out from consolidation

Symbol	Name	Mkt Val, USD (Mil)	Composite Rating
ZE.A.DK	Zealand Pharma	6,894	61

### Laggards

Stocks showing technical weakness

Symbol	Name	Mkt Val, USD (Mil)	A/D, Nbr Rtg, Cur Wk
AFX.DE	Carl Zeiss Meditec (Xet)	6,164	-69
TECN.CH	Tecan 'R'	4,424	-38
STMN.CH	Straumann Hldg.	19,354	-29
SRT3X.DE	Sartorius Pref. (Xet)	8,775	-29
GEN.DK	Genmab	17,124	-26

### Top Rated

Stocks displaying the best Composite rating

Symbol	Name	Mkt Val, USD (Mil)	Composite Rating
NON.DK	Novo Nordisk 'B'	4,80,138	99
YPSN.CH	Ypsomed Holding R	5,871	99
AMB.DK	Ambu B	4,603	99
ALK.DK	Alk-Abello B	4,214	98
MEDI.SE	Medicover B	1,339	98
UCB.BE	Ucb	28,930	95
ROVI.ES	Lbos.Farmaceuticos Rov	4,748	95
BPHG.SE	Bonesupport Holding	1,564	95
XVIV.SE	Xvivo Perfusion	1,270	95
SFZN.CH	Siegfried 'R'	4,746	93
DESN.CH	Dottikon Es Holding	4,048	93
EUZX.DE	Eckert & Ziegler (Xet)	1,019	93
VIRB.FR	Virbac	3,183	91
CAMX.SE	Camurus	3,207	90
AZN.GB	Astrazeneca	2,44,157	89

### Basing

Stocks trading near pivot on improving technical characteristics

Symbol	Name	Mkt Val, USD (Mil)	Composite Rating
ORNB.FI	Orion B	4,570	88

# European Weekly Summary

WILLIAM O'NEIL+CO.

## Retail

### European Focus List

O'Neil recommendations

Symbol	Name	Mkt Val, USD (Mil)	Focus List Since
IND.ES	Inditex	1,56,066	29-11-23

### Breaking Out This Week

Stocks breaking out from consolidation

Symbol	Name	Mkt Val, USD (Mil)	Composite Rating
CLAS.SE	Clas Ohlson B	1,044	99

### Laggards

Stocks showing technical weakness

Symbol	Name	Mkt Val, USD (Mil)	A/D, Nmbr Rtg, Cur Wk
CRFR.FR	Carrefour	9,982	-40
BME.GB	B&M European Val.Ret. (I	5,939	-39
SBRY.GB	Sainsbury (J)	7,884	-38
SSPG.GB	Ssp Group	1,536	-38
OCDO.GB	Ocado Group	3,266	-37
B4BX.DE	Metro Ag (Xet)	1,696	-37
UHRN.CH	The Swatch Group	4,898	-30

### Top Rated

Stocks displaying the best Composite rating

Symbol	Name	Mkt Val, USD (Mil)	Composite Rating
ELFR	Essilorluxottica	1,02,153	99
CLAS.SE	Clas Ohlson B	1,044	99
NXT.GB	Next	14,598	94
COL.BE	Colruyt Group	5,986	92
PND.DK	Pandora	12,514	91
DIE.BE	D Ieteren Group	11,285	91
HMBF.SE	Hennes & Mauritz B	26,174	90
MAB.GB	Mitchells & Butlers	2,272	90
IND.ES	Inditex	1,56,066	89
CECX.DE	Ceconomy Ag	1,642	89
CURY.GB	Currys	1,094	89
MKS.GB	Marks & Spencer Group	7,706	87
GRG.GB	Greggs	3,670	87
BC.IT	Brunello Cucinelli	6,693	83
ELPB.SE	Electrolux Professional B	2,021	82

### Basing

Stocks trading near pivot on improving technical characteristics

Symbol	Name	Mkt Val, USD (Mil)	Composite Rating
FRAS.GB	Frasers Group	4,947	79



# European Weekly Summary

WILLIAM O'NEIL+CO.

## Technology

### European Focus List

O'Neil recommendations

Symbol	Name	Mkt Val, USD (Mil)	Focus List Since
ASML.NL	Asml Holding	4,11,633	24-1-24
UNMG.NL	Universal Music Group	54,240	6-10-23
ASIN.NL	Asm International	37,526	1-12-23
BESI.NL	Be Semiconductor Indust	13,297	5-4-24
NEMX.DE	Nemetschek (Xet)	11,189	15-11-23
HEMN.SE	Hemnet Group	2,733	1-6-23

### Breaking Out This Week

Stocks breaking out from consolidation

Symbol	Name	Mkt Val, USD (Mil)	Composite Rating
--------	------	--------------------	------------------

### Laggards

Stocks showing technical weakness

Symbol	Name	Mkt Val, USD (Mil)	A/D, Nmbr Rtg, Cur Wk
ORA.FR	Orange	27,198	-54
AIXAX.DE	Aixtron (Xet)	2,258	-48
SESG.FR	Ses Fdr	2,064	-46
S92X.DE	Sma Solar Tech. (Xet)	1,040	-36
DSY.FR	Dassault Systemes	49,447	-33
CAP.FR	Capgemini	34,413	-33
AUTH.NO	Autostore Holdings	4,264	-32
WLN.FR	Worldline	2,945	-32
SOP.FR	Sopra Steria Group	4,320	-31
BAR.BE	Barco New	1,095	-29

### Top Rated

Stocks displaying the best Composite rating

Symbol	Name	Mkt Val, USD (Mil)	Composite Rating
DARK.GB	Darktrace	5,105	99
QTGR.FI	Qt Group	2,205	99
ACQB.SE	Yubico	1,897	99
ANOD.SE	Addnode Group B	1,548	99
AUTO.GB	Auto Trader Group	9,193	98
SETB.SE	Sectra B	4,252	98
HEMN.SE	Hemnet Group	2,733	98
GAMA.GB	Gamma Communications	1,771	98
TRST.GB	Trustpilot Group	1,208	98
PROS.NL	Prosus	95,234	97
G24X.DE	Scout24 (Xet)	5,714	97
PLWP.FR	Planisware	1,959	97
BCG.GB	Baltic Classifieds Grp	1,442	97
HY9H.DE	Hynix Semiconductor	1,16,340	96
ALEK.FR	Esker	1,162	95

### Basing

Stocks trading near pivot on improving technical characteristics

Symbol	Name	Mkt Val, USD (Mil)	Composite Rating
BESI.NL	Be Semiconductor Indust	13,297	89
REY.IT	Reply	5,524	86
SES.IT	Sesa	1,939	71
VITB.SE	Vitec Software Group B	1,853	92
BYIT.GB	Bytes Technology Group	1,730	89
COKX.DE	Cancom (Xet)	1,236	82

# European Weekly Summary

WILLIAM O'NEIL+CO.

## Transportation

### European Focus List

O'Neil recommendations

Symbol	Name	Mkt Val, USD (Mil)	Focus List Since
INPW.NL	Inpost	8,832	16-5-24

### Breaking Out This Week

Stocks breaking out from consolidation

Symbol	Name	Mkt Val, USD (Mil)	Composite Rating
--------	------	--------------------	------------------

### Laggards

Stocks showing technical weakness

Symbol	Name	Mkt Val, USD (Mil)	A/D, NmbR Rtg, Cur Wk
LHAX.DE	Deutsche Lufthansa (Xet)	7,327	-55
SRAIL.CH	Stadler Rail	2,881	-38
ALD.FR	Ayvens	4,682	-34
DHLX.DE	Deutsche Post (Xet)	48,362	-32
NAS.NO	Norwegian Air Shuttle	1,145	-32
RYA.IE	Ryanair Holdings	19,988	-29
EZJ.GB	Easyjet	4,297	-27

### Top Rated

Stocks displaying the best Composite rating

Symbol	Name	Mkt Val, USD (Mil)	Composite Rating
INPW.NL	Inpost	8,832	99
IDS.GB	International Distribution	3,860	98
BWLP.NO	Bw Lpg	2,503	97
CAF.ES	Const Y Auxiliar De Ferr	1,301	97
SNL.NO	Stolt-Nielsen	2,631	96
AVAN.NO	Avance Gas	1,182	96
IDL.FR	Id Logistics Group	2,462	95
ZIG.GB	Zigup	1,179	92
WWL.NO	Wallenius Wilhelmsen	4,076	90
LOGI.ES	Logista Hold	3,807	88
CKN.GB	Clarkson	1,612	88
PST.IT	Poste Italiane	17,548	85
HOAH.NO	Hoegh Autoliners	2,169	82
CADE.NO	Cadeler	2,124	73
HAFN.NO	Hafnia	4,019	69

### Basing

Stocks trading near pivot on improving technical characteristics

Symbol	Name	Mkt Val, USD (Mil)	Composite Rating
--------	------	--------------------	------------------

# European Weekly Summary

WILLIAM O'NEIL+CO.

## Utility

### European Focus List

O'Neil recommendations

Symbol	Name	Mkt Val, USD (Mil)	Focus List Since
--------	------	-----------------------	------------------

### Breaking Out This Week

Stocks breaking out from consolidation

Symbol	Name	Mkt Val, USD (Mil)	Composite Rating
--------	------	-----------------------	------------------

### Laggards

Stocks showing technical weakness

Symbol	Name	Mkt Val, USD (Mil)	A/D, Nbr Rtg, Cur Wk
VIE.FR	Veolia Environ	22,323	-41
IG.IT	Italgas	4,126	-28

### Top Rated

Stocks displaying the best Composite rating

Symbol	Name	Mkt Val, USD (Mil)	Composite Rating
SSE.GB	Sse	25,186	81
TEP.GB	Telecom Plus	1,743	81
FORT.FI	Fortum	14,075	78
REE.ES	Redeia Corporacion	9,998	78
DRX.GB	Drax Group	2,517	78
IBE.ES	Iberdrola	83,657	75
A2A.IT	A2a	6,248	75
VERB.AT	Verbund	13,925	71
VIE.FR	Veolia Environ	22,323	68
EVN.AT	Evn	5,751	68
ACE.IT	Acea	3,730	67
TRN.IT	Terna Rete Elettrica Naz	16,347	58
ENGI.FR	Engie	35,740	57
ENEL.IT	Enel	70,325	55
EOANX.DE	E On (Xet)	35,629	55

### Basing

Stocks trading near pivot on improving technical characteristics

Symbol	Name	Mkt Val, USD (Mil)	Composite Rating
--------	------	--------------------	------------------

### Disclaimer

William O'Neil + Co. Incorporated offers the world's leading institutional investment managers a distinct blend of quantitative, fundamental, and technical expertise in global stock buy-and-sell recommendations. Its core method profiles stocks displaying the characteristics of outperformance proven persistent over market history—drawn from the firm's industry-leading database.

William O'Neil + Co. Incorporated is an SEC Registered Investment Advisor. William O'Neil India Pvt Ltd Associates and William O'Neil Shanghai Pvt. Ltd. may develop research content on behalf of William O'Neil + Co. Our content should not be relied upon as the sole factor in determining whether to buy, sell, or hold a stock. For important information about reports, our business, and legal notices (including our Privacy Policy), please go to [williamoneil.com/legal](http://williamoneil.com/legal).

#### Limitations of Use of Stock Charts

Our content and stock charts, which provide certain current and historical information, should not be relied upon as the sole factor in determining whether to buy, sell, or hold a stock. The charts provide certain current and historical information, but are not a substitute for a comprehensive analysis of the individual stocks.

#### No Investment Banking

William O'Neil + Co. and its affiliates do not engage in investment banking and do not make a market in any securities. Neither William O'Neil + Co. nor any of its affiliates have, during the past 12 months, received any compensation from any of the companies discussed in this report. None of the companies discussed in this report are, or have been during the past 12 months, clients of William O'Neil + Co. or its affiliates.

#### Proprietary Positions

William O'Neil + Co. does not maintain proprietary positions in any securities. Employees of William O'Neil + Co. and its affiliates may now or in the future own positions in the companies discussed in this report. As of the end of the month immediately preceding the date of publication of such reports, none of such employees or affiliates beneficially owned 1% or more of the common equity securities of any of the companies discussed in this report.

© 2024, William O'Neil + Company, Inc. All rights reserved.

No part of this material may be copied or duplicated in any form by any means or redistributed without the prior written consent of William O'Neil + Co.