

European Weekly Summary

May 13, 2024

Key points:

- **The Stoxx 600 was shifted to a Confirmed Uptrend last week** as the index hit fresh highs. It inched more than 300 bps higher for the week, driven by Utility, Insurance, and Construction stocks. Autos was the only sector that ended in the red as key original equipment manufacturers reported poor earnings. The index is now trading ~3% above its 50-DMA and ~10% from its 200-DMA. It is extended in the short term. We expect a short-term pullback toward its rising 10-DMA (2% below) before the release of key U.S. PPI and CPI data on Tuesday and Wednesday, respectively.
- On our rotation graph, **most sectors are exhibiting improvement in their short-term momentum**. Leading over 26 weeks, Capital Equipment is showing further strength. Energy, Financial, Basic Material, Transportation, Health Care, Utility, and Retail have been showing strong improvement in their short-term momentum. **Only Technology and Consumer Cyclical continue to have deteriorating short-term momentum**.
- **Sector Score Cards – Stocks of Interest (Top-rated names with best technical setups – refer pages 9–20):** As **breadth improved in the past week**, the number of breakouts in Europe increased significantly. The best-rated names based on our fundamental ratings and rankings that broke out include:
 - **Basic Material:** Sika (SIKA.CH).
 - **Capital Equipment:** Siemens (SIEX.DE), Informa (INF.GB), Spie (SPIE.FR), and Burckhardt (BCHN.CH).
 - **Financial:** Generali (G.IT), Banca Mediolanum (BMED.IT), Banca Generali (BANC.IT), and Swissquote (EFL constituent; SQN.CH).
 - **Health Care:** ALK-Abello (ALK.DK) and Amplifon (AMP.IT).
 - **Retail:** Fluidra (FDR.ES).
 - **Technology:** Inficon (IFCN.CH) and Gamma Communications (GAMA.GB).
 - **Transportation:** Wallenius (WWL.NO) and Id Logistics (IDL.FR).
- **European Focus List update:**
 - **Actionable names** include Beiersdorf (BEIX.DE), Swissquote (SQN.CH), and Safran (SGM.FR).
 - **Addition:** None.
 - **Removal:** None.

Prepared by:

Tristan d'Aboville – Executive Director – Research Analyst,

tristan.daboville@williamoneil.com | Direct: +44 20 3178 7125 | Mobile: +44 77 0344 5260

European Weekly Summary

WILLIAM O'NEIL+CO.

Europe's main index hit a new 52-week high.

- The Stoxx 600 bounced off support near its 50-DMA, ending the week with a strong ~3% gain. The index was shifted to Confirmed Uptrend after it registered a fresh 52-week high.
- Support levels: 10-DMA (~1.8% below), 50-DMA (2.9% below), 100-DMA (5.1% below), and 200-DMA (9.9% lower).
- Among the 16 indices we cover, 11 are in a Confirmed Uptrend, three in a Rally Attempt, and two in an Uptrend Under Pressure. The average distribution day count is currently at 2.5.
- We recommend that investors add risks in stocks that are part of leading industry groups and are breaking out of proper bases/retaking their key moving averages with a strong and rising RS line. Reduce risks in stocks that are breaching their key support levels.

Sector rotation:

- On our rotation graph, most sectors are exhibiting improvement in their short-term momentum. Capital Equipment, which is placed in the best quadrant, is showing further strength.
- Energy, Financial, Basic Material, Transportation, Health Care, Utility, and Retail have been showing strong improvement in their short-term momentum.
- Consumer Staple, which in the lagging quadrant, also exhibited improvement in its short-term momentum.
- Technology and Consumer Cyclical have had deterioration in their short-term momentum.

European Focus List update:

- **Addition:** None.
- **Removal:** None.
- **Actionable names** include Beiersdorf (BEIX.DE), Swissquote (SQN.CH), and Safran (SGM.FR).

Sector Heat Map: Average Perf. – Market Cap Average Weighted

(Market Cap > \$1BN & ADV > \$1M)

Sectors	5 Days	4 Weeks	8 Weeks	13 Weeks	26 Weeks	52 Weeks
Utility	4.4%	7.8%	8.5%	10.8%	7.3%	0.8%
Capital Equipment	4.1%	5.3%	5.8%	14.9%	32.7%	31.3%
Energy	3.5%	0.0%	10.3%	13.6%	9.5%	14.0%
Consumer Staple	3.4%	6.8%	3.8%	2.6%	4.4%	-5.4%
Financial	3.2%	4.6%	5.6%	14.2%	23.6%	27.5%
Technology	3.0%	2.2%	2.9%	2.0%	20.9%	22.8%
Basic Material	2.8%	2.7%	8.0%	15.2%	16.9%	13.2%
Transportation	2.4%	4.2%	7.7%	1.8%	13.0%	3.1%
Retail	2.1%	2.0%	-0.1%	6.7%	12.9%	11.0%
Health Care	1.8%	4.3%	3.9%	7.9%	16.6%	11.6%
Consumer Cyclical	0.8%	0.4%	-2.7%	3.3%	19.3%	6.8%

Source: William O'Neil + Co.

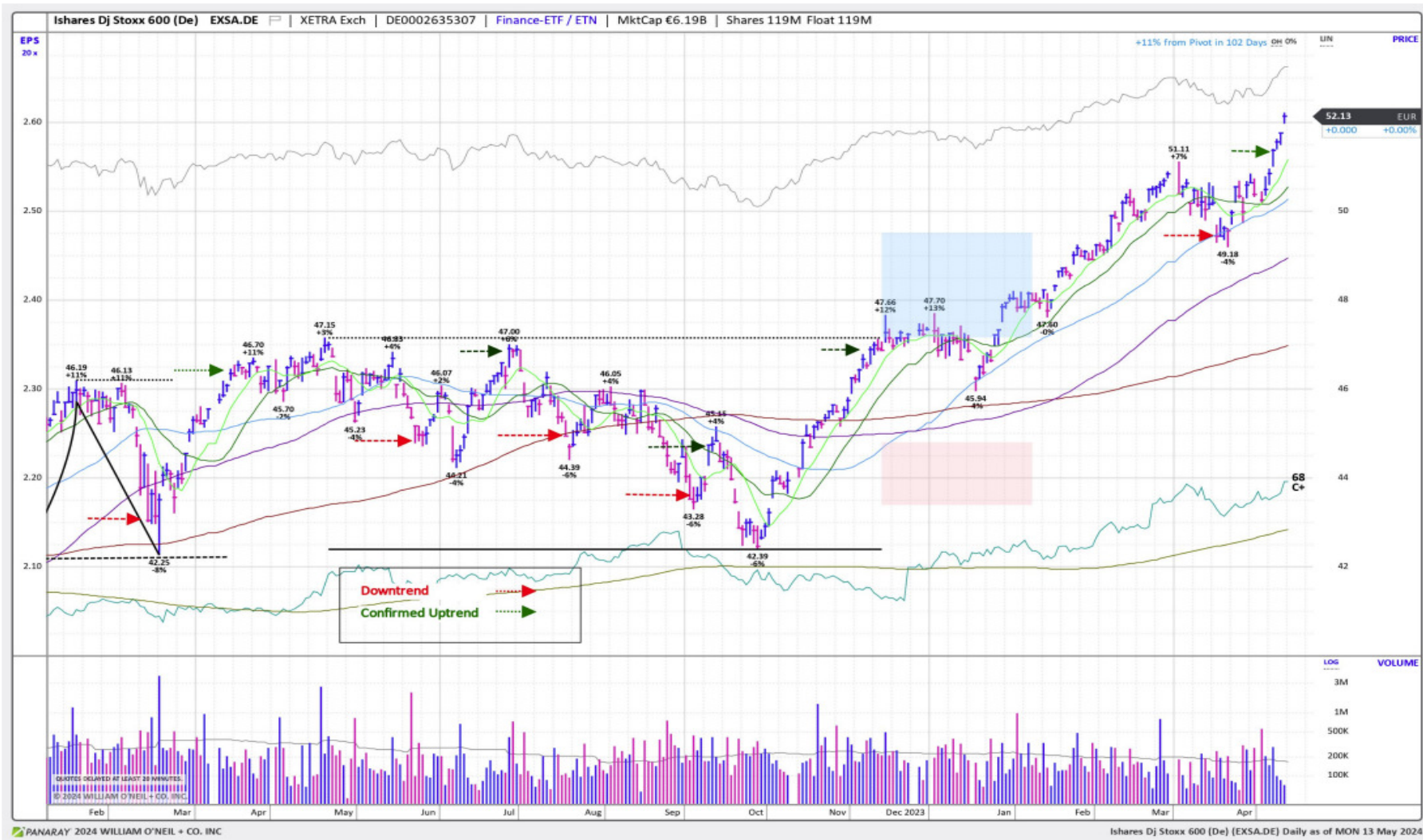
Market Condition

O'Neil Methodology

Country	Market Condition	Distribution Days
France	Rally Attempt	N/A
Germany	Confirmed Uptrend	0
UK	Confirmed Uptrend	2
Stoxx600	Confirmed Uptrend	0
Denmark	Confirmed Uptrend	0
Ireland	UnderPressure	4
Finland	Confirmed Uptrend	0
Norway	Confirmed Uptrend	3
Sweden	Confirmed Uptrend	4
Switzerland	Rally Attempt	N/A
Austria	Confirmed Uptrend	5
Italy	Rally Attempt	N/A
Portugal	Confirmed Uptrend	2
Spain	UnderPressure	10
Belgium	Confirmed Uptrend	2
Netherlands	Confirmed Uptrend	0
All Europe (Average)		2.5

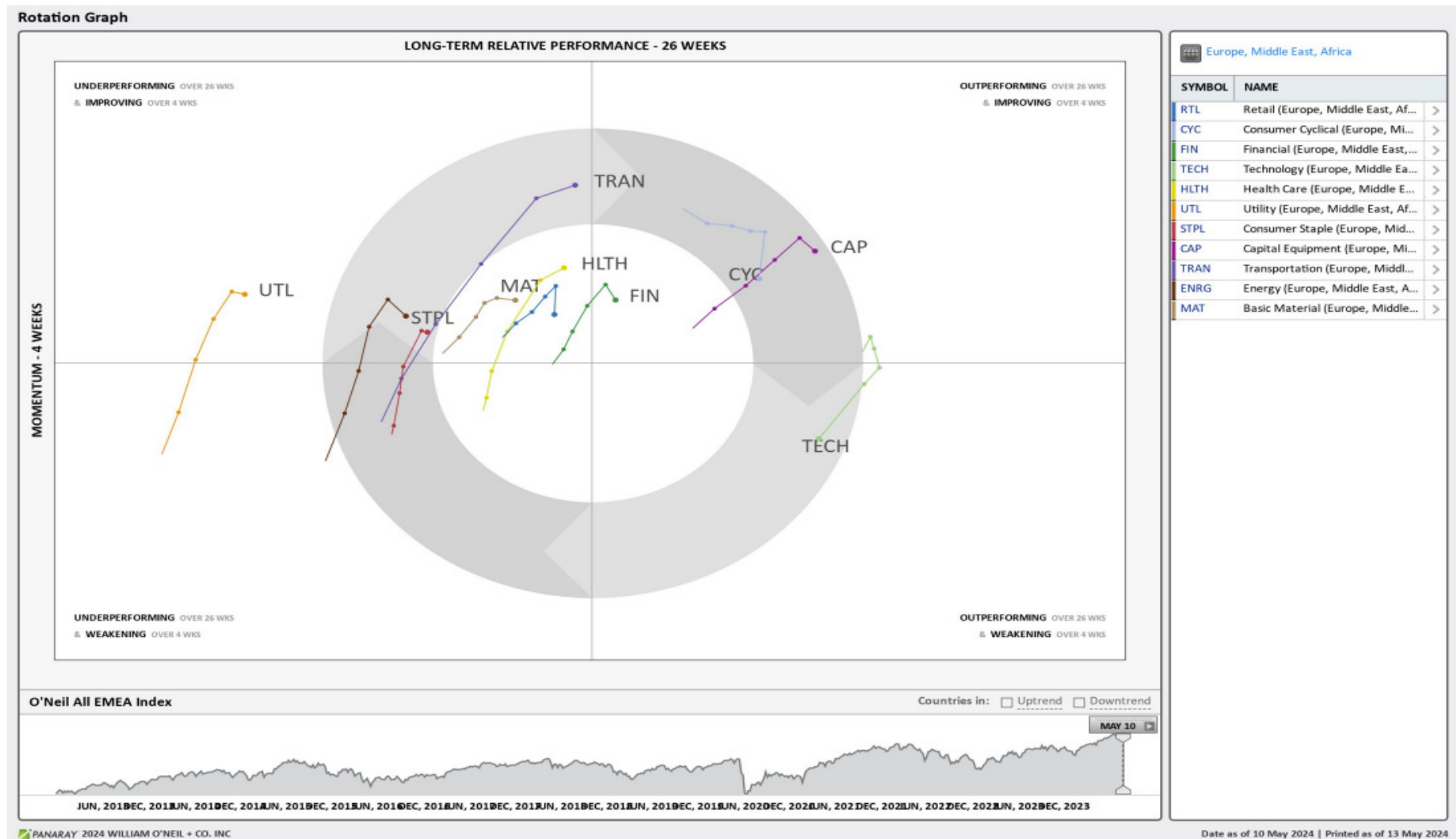
Source: William O'Neil + Co.

iShares Dj Stoxx 600 (EXSA.DE) – Daily Datagraph™



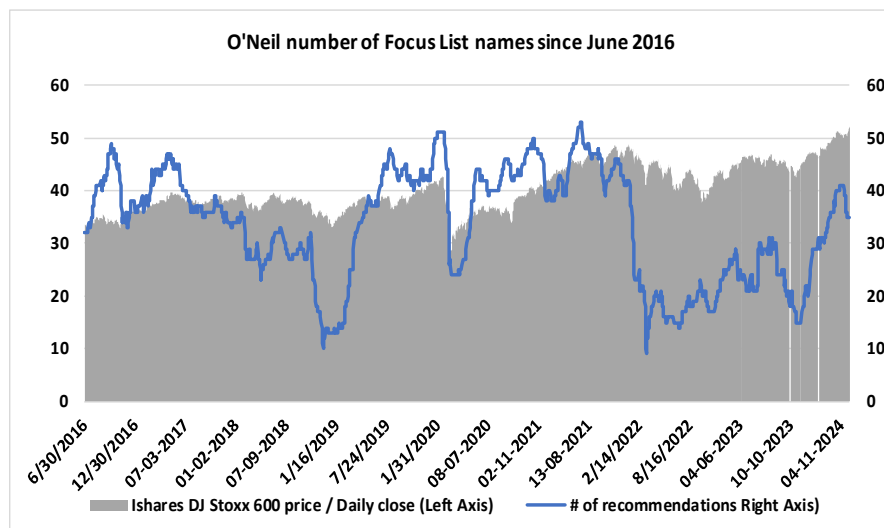
Source: William O'Neil + Co.

EMEA Rotation Chart

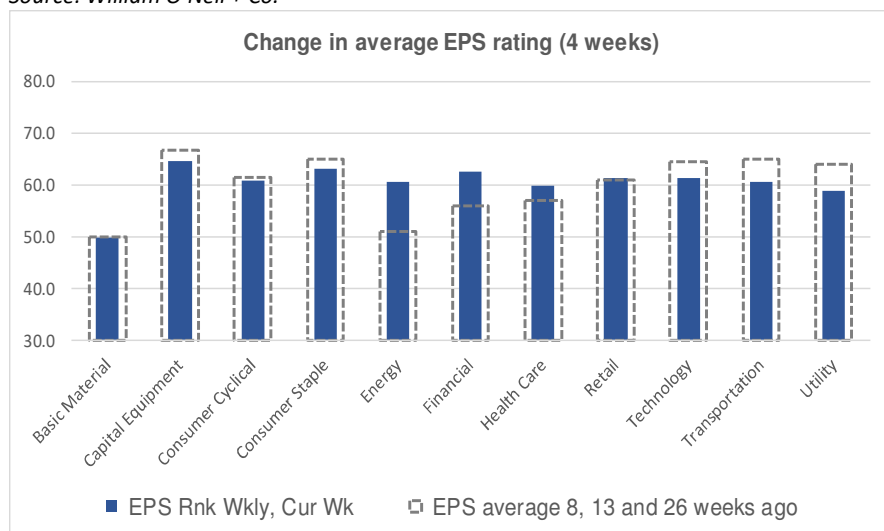


Source: William O'Neil + Co.

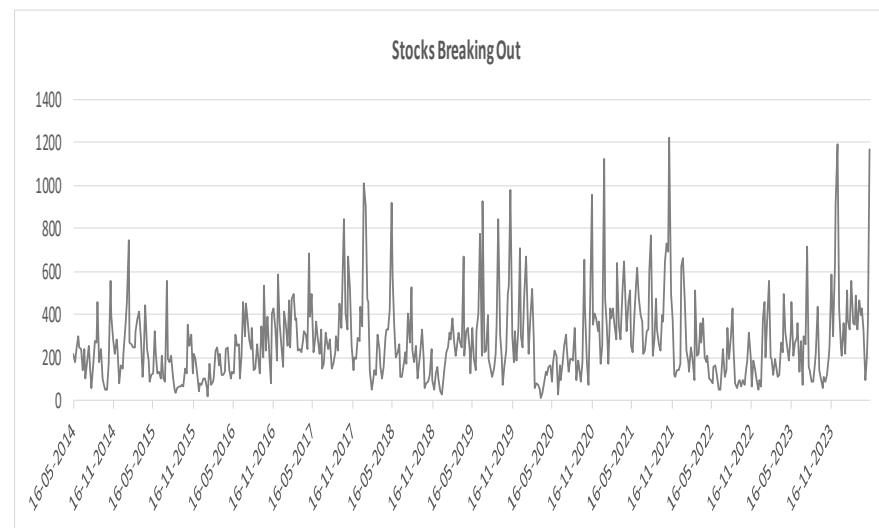
Key Metric Changes: EPS, RS, # of EFL Names & Breakouts



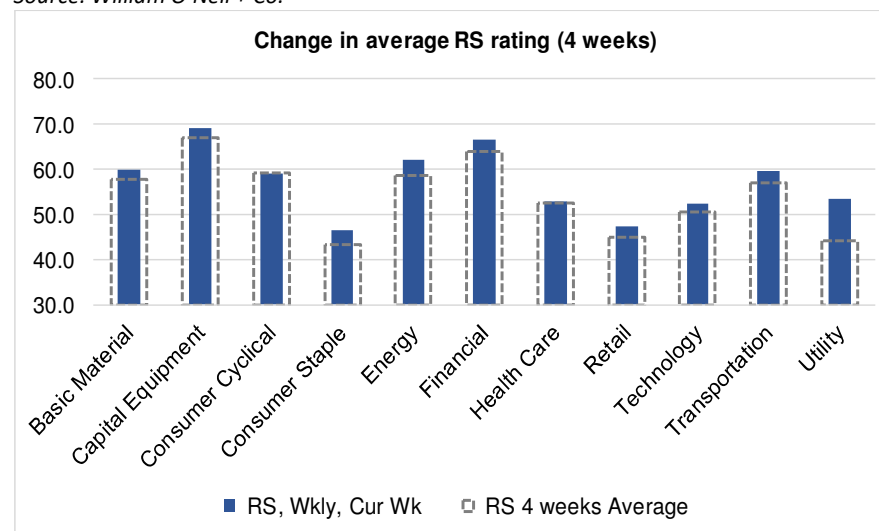
Source: William O'Neil + Co.



Source: William O'Neil + Co.



Source: William O'Neil + Co.



Source: William O'Neil + Co.

How To Read The Sector Card

European Focus List

O'Neil Recommendations

The **European Focus List (EFL)** is a proprietary list of long ideas that fit the fundamental and technical criteria of the O'Neil Methodology.

Top Rated

Stocks displaying the best Composite rating

The **Composite Rating** combines the EPS Rank, Relative Strength Rating, Industry Group Rank, SMR Rating, Accumulation/Distribution Rating, and the stock's percent off its 52-week high. More weight is placed on EPS Rank and Relative Strength Ratings. The resulting rating of technical and fundamental factors is compared against all other stocks in the trading country and assigned a rating from 1 to 99, with 99 being the best. A rating of 90 means the stock has outperformed 90% of all other stocks.

Outperforming

Stocks breaking out from pivot

We recommend buying stocks at the **breakout level**. A breakout is a price movement of the security through an identified level of resistance (pivot point) after forming a consolidation base. Our proprietary chart patterns are based on over 50 years of our active research into the behavior of equities.

Early Basing

Stocks trading near pivot on improving technical characteristics

Stock near pivot point (last line of resistance) with improving technical characteristics and above average fundamental profile based on O'Neil proprietary ratings and rankings.

Laggards

Stocks in which investors are losing interest

Laggards are stocks showing technical weakness. We believe these stocks are laggards relative to their own domestic markets and, if owned, need to be reviewed carefully as they may be vulnerable to further downside risk and underperformance.

European Weekly Summary

WILLIAM O'NEIL+CO.

Basic Material

European Focus List

O'Neil recommendations

Symbol	Name	Mkt Val, USD (Mil)	Focus List Since
IMCD.NL	Imcd Group	9,042	13-3-24

Breaking Out This Week

Stocks breaking out from consolidation

Symbol	Name	Mkt Val, USD (Mil)	Composite Rating
SIKA.CH	Sika	49,232	91

Laggards

Stocks showing technical weakness

Symbol	Name	Mkt Val, USD (Mil)	A/D, Nmb	Rtg, Cur Wk
YARA.NO	Yara International	7,538		-31

Top Rated

Stocks displaying the best Composite rating

Symbol	Name	Mkt Val, USD (Mil)	Composite Rating
HILS.GB	Hill & Smith Plc	1,969	99
CEY.GB	Centamin	1,824	99
NVG.PT	Navigator Comp	3,364	95
SEM.PT	Semapa	1,418	92
SIKA.CH	Sika	49,232	91
KEMR.FI	Kemira	3,664	91
ROBT.FR	Robertet	2,109	90
CEM.IT	Cementir Holding	1,776	90
NA.SE	Nolato B	1,354	89
ELM.GB	Elementis	1,092	89
GIVN.CH	Givaudan 'N'	41,286	88
SOL.IT	Sol	3,361	88
NK.FR	Imerys	3,213	87
HOLN.CH	Holcim	52,131	85
ANTO.GB	Antofagasta	27,806	85

Basing

Stocks trading near pivot on improving technical characteristics

Symbol	Name	Mkt Val, USD (Mil)	Composite Rating
CEM.IT	Cementir Holding	1,776	90

Capital Equipment

European Focus List

O'Neil recommendations

Symbol	Name	Mkt Val, USD (Mil)	Focus List Since
SGM.FR	Safran	97,795	17-5-23
REL.GB	Relx	81,093	4-8-22
BA.GB	Bae Systems	52,923	15-9-23
RR.GB	Rolls-Royce Holdings	44,594	15-11-23
ALF.SE	Alfa Laval	18,561	20-3-24
VACN.CH	Vat Group	15,561	12-12-23
SAAB.SE	Saab B	11,144	16-1-24

Breaking Out This Week

Stocks breaking out from consolidation

Symbol	Name	Mkt Val, USD (Mil)	Composite Rating
SIEX.DE	Siemens (Xet)	1,62,344	92
LRRS.FR	Legrand	29,193	87
KNEBV.FI	Kone B	24,070	88
SCHN.CH	Schindler 'R'	17,056	87
INF.GB	Informa	14,398	94
WPP.GB	Wpp	11,408	65
TT@G.SE	Trelleborg B	8,058	89
SPIE.FR	Spie	6,609	97
DPLM.GB	Diploma	6,544	92
IMI.GB	Imi	6,152	93
AALB.NL	Aalberts	5,646	85
PLUX.FR	Pluxee	4,957	78
BCHN.CH	Burckhardt Cmpsn.Hldg.	2,292	99
AFB.SE	Afry	1,868	79
OERL.CH	Oc Oerlikon Corporation	1,765	62
AFB.SE	Afry	1,868	79

Laggards

Stocks showing technical weakness

Symbol	Name	Mkt Val, USD (Mil)	A/D, Nmbr Rtg, Cur Wk
EDEN.FR	Edenred	12,673	-46
MAYR.AT	Mayr-Melnhof Karton	2,516	-27

Top Rated

Stocks displaying the best Composite rating

Symbol	Name	Mkt Val, USD (Mil)	Composite Rating
PUB.FR	Publicis Groupe	29,611	99
KOG.NO	Kongsberg Gruppen	13,493	99
HDJ.NL	Arcadis	5,918	99
NXS.FR	Nexans	5,118	99
MYCR.SE	Mycronic	3,589	99
FUR.NL	Fugro	2,863	99
BCHN.CH	Burckhardt Cmpsn.Hldg.	2,292	99
FOUR.GB	4imprint Group	2,259	99
SAXX.DE	Stroeer (Xet)	3,786	98
LAGR.SE	Lagercrantz Group B	3,139	98
MT.IT	Marie	2,600	98
QT@F.FR	Schneider Electric	1,44,381	97
SGM.FR	Safran	97,795	97
ALF.SE	Alfa Laval	18,561	97
WRT.FI	Wartsila	11,909	97

Basing

Stocks trading near pivot on improving technical characteristics

Symbol	Name	Mkt Val, USD (Mil)	Composite Rating
WSG.NL	Wolters Kluwer	39,336	83
SWEB.SE	Sweco B	3,843	75

European Weekly Summary

WILLIAM O'NEIL+CO.

Consumer Cyclical

European Focus List

O'Neil recommendations

Symbol	Name	Mkt Val, USD (Mil)	Focus List Since
RMS.FR	Hermes Intl.	2,61,080	9-2-24
RACE.IT	Ferrari (Mil)	73,762	6-3-23
ADXS.DE	Adidas (Xet)	43,507	20-11-23
FLTR.GB	Flutter Entertainment	36,075	16-2-24
EVOG.SE	Evolution	24,753	23-2-24
MONC.IT	Moncler	18,778	13-3-24
MUGR.SE	Munters Group	4,043	15-12-23
TRIFR	Trigano	3,132	20-12-23
TGYM.IT	Technogym	2,055	13-2-24

Breaking Out This Week

Stocks breaking out from consolidation

Symbol	Name	Mkt Val, USD (Mil)	Composite Rating
HEIX.DE	Heidelbergcement (Xet)	20,189	89
HWDN.GB	Howden Joinery Gp.	6,354	88
THULE.SE	Thule Group	3,156	83

Laggards

Stocks showing technical weakness

Symbol	Name	Mkt Val, USD (Mil)	A/D, NmbR Htg, Cur Wk
AML.GB	Aston Martin Lagonda Glo	1,418	-46
BOSSX.DE	Boss (Hugo) (Xet)	3,632	-38
VOCB.SE	Volvo Car B	9,636	-33
STL.IT	Stellantis	69,140	-31

Top Rated

Stocks displaying the best Composite rating

Symbol	Name	Mkt Val, USD (Mil)	Composite Rating
BZU.IT	Buzzi	7,988	99
RHIM.GB	Rhi Magnesita Nv	2,202	99
A3M.ES	Atresmedia Corp	1,180	99
TXGN.CH	Tx Group Ag	1,747	98
SKIS.SE	Skistar B	1,099	98
GEN.GB	Genuit Group	1,437	97
RENU.FR	Renault	15,385	96
C5H.IE	Cairn Homes (Dub)	1,176	96
ROC.DK	Rockwool B	4,324	95
MUGR.SE	Munters Group	4,043	95
TRN.GB	Trainline Plc.	1,940	95
SGO.FR	Saint Gobain	44,043	93
JFN.CH	Jungfraubahn 'R'	1,303	93
ASSB.SE	Assa Abloy B	30,696	91
VTY.GB	Vistry Group	5,515	91

Basing

Stocks trading near pivot on improving technical characteristics

Symbol	Name	Mkt Val, USD (Mil)	Composite Rating
WBYF.SE	Wallenstam 'B'	2,789	82
TGYM.IT	Technogym	2,055	73
SANL.IT	Sanlorenzo	1,637	88
SYSR.SE	Systemair	1,543	72
CHBE.FR	Beneteau	1,197	78
SKIS.SE	Skistar B	1,099	98

European Weekly Summary

WILLIAM O'NEIL+CO.

Consumer Staple

European Focus List

O'Neil recommendations

Symbol	Name	Mkt Val, USD (Mil)	Focus List Since
BEIX.DE	Beiersdorf (Xet)	39,493	21-9-23

Breaking Out This Week

Stocks breaking out from consolidation

Symbol	Name	Mkt Val, USD (Mil)	Composite Rating
--------	------	--------------------	------------------

Laggards

Stocks showing technical weakness

Symbol	Name	Mkt Val, USD (Mil)	A/D, Nbr Rtg, Cur Wk
ITP.FR	Interparfums	3,596	-36

Top Rated

Stocks displaying the best Composite rating

Symbol	Name	Mkt Val, USD (Mil)	Composite Rating
PFD.GB	Premier Foods	1,810	97
HFG.GB	Hilton Food Group	1,043	96
LBAK.BE	Lotus Bakeries	8,675	95
CWK.GB	Cranswick	2,924	95
ARYN.CH	Aryzta	1,962	95
AAK.SE	Aak	7,006	93
CCH.GB	Coca-Cola Hbc (Cdi)	12,406	90
SALM.NO	Salmar	8,252	90
ESSI.SE	Essity B	16,513	87
OR@F.FR	L'Oreal	2,61,171	82
AUSS.NO	Austevoll Seafood	1,726	80
GL9.IE	Glanbia	5,179	79
IMB.GB	Imperial Brands	20,138	77
RBR.DK	Royal Unibrew	3,986	77
BEIX.DE	Beiersdorf (Xet)	39,493	75

Basing

Stocks trading near pivot on improving technical characteristics

Symbol	Name	Mkt Val, USD (Mil)	Composite Rating
ABI.BE	Anheuser-Busch Inbev	1,15,141	73
ESSI.SE	Essity B	16,513	87
ORK.NO	Orkla	7,625	70

European Weekly Summary

WILLIAM O'NEIL+CO.

Energy

European Focus List

O'Neil recommendations

Symbol	Name	Mkt Val, USD (Mil)	Focus List Since
GTT.FR	Gtt	5,424	17-1-24

Breaking Out This Week

Stocks breaking out from consolidation

Symbol	Name	Mkt Val, USD (Mil)	Composite Rating
DEN.DK	Oersted	26,166	32
WG.GB	Wood Group (John)	1,694	86
DNO.NO	Dno	1,025	50
DAI.IT	D'Amico Intl.Ship.	1,016	73

Laggards

Stocks showing technical weakness

Symbol	Name	Mkt Val, USD (Mil)	A/D, Nbr Rtg, Cur Wk
--------	------	--------------------	----------------------

Top Rated

Stocks displaying the best Composite rating

Symbol	Name	Mkt Val, USD (Mil)	Composite Rating
ENOG.GB	Energean plc	2,747	99
ESSO.FR	Esso	2,592	99
SPM.IT	Saipem	4,636	97
DEMG.BE	Deme Group	4,237	96
DOFG.NO	Dof Group	1,540	96
MAU.FR	Maurel Et Prom	1,412	95
RUI.FR	Rubis	3,530	94
ODDR.NO	Oddfell Drilling	1,147	93
VLR.FR	Vallourec	4,046	91
HBR.GB	Harbour Energy	2,891	91
GTT.FR	Gtt	5,424	90
SBMO.NL	Sbm Offshore	2,723	89
TTE.GB	TotalEnergies	1,76,923	87
SUBC.NO	Subsea 7	5,249	87
IPCO.SE	International Petroleum	1,666	87

Basing

Stocks trading near pivot on improving technical characteristics

Symbol	Name	Mkt Val, USD (Mil)	Composite Rating
ERG.IT	Erg	4,352	78
AKSO.NO	Aker Solutions	2,018	82

European Weekly Summary

WILLIAM O'NEIL+CO.

Financial

European Focus List

O'Neil recommendations

Symbol	Name	Mkt Val, USD (Mil)	Focus List Since
EQT.SE	Eqf	37,395	22-2-24
BP.IT	Banco Bpm	10,164	26-9-23
SQN.CH	Swissquote 'R'	4,562	16-1-24
TBCG.GB	Tbc Bank Group	2,079	28-6-23

Breaking Out This Week

Stocks breaking out from consolidation

Symbol	Name	Mkt Val, USD (Mil)	Composite Rating
G.IT	Assicurazioni Generali	41,240	92
BMED.IT	Banca Mediolanum	8,660	95
BANC.IT	Banca Generali	5,030	97
VZN.CH	Vz Holding 'N'	4,995	96
NORD.SE	Nordnet	4,775	79
SQN.CH	Swissquote 'R'	4,562	99
INVP.GB	Investec	4,414	95
MING.NO	Sparebank 1 Smn Ords	1,999	91
LWDB.GB	Law Debenture	1,454	84

Laggards

Stocks showing technical weakness

Symbol	Name	Mkt Val, USD (Mil)	A/D, NmbR Htg, Cur Wk
SGKN.CH	St Galler Kantonalbank	3,068	-32
SVK.SE	Svenska Handelsbanken .	17,635	-31
BCVN.CH	Bc Vaud N	9,143	-31
DNB.NO	Dnb Bank	28,985	-27
STJ.GB	St.James's Place	3,327	-27

Top Rated

Stocks displaying the best Composite rating

Symbol	Name	Mkt Val, USD (Mil)	Composite Rating
EQT.SE	Eqf	37,395	99
STAN.GB	Standard Chartered	25,043	99
A5G.IE	Aib Group	12,999	99
BCP.PT	Banco Comr.Portugues 'f	5,568	99
GCO.ES	Grupo Catalana Occident	4,698	99
SQN.CH	Swissquote 'R'	4,562	99
BPSO.IT	Banca Ppo.Di Sondrio	3,873	99
CE.IT	Credito Emiliano	3,772	99
FTKX.DE	Fintech Group (Xet)	1,527	99
SAN.ES	Banco Santander	80,705	98
CRDA.FR	Credit Agricole	50,356	98
NWG.GB	Natwest Group	34,883	98
ABN.NL	Abn Amro Bank	8,079	98
BKT.ES	Bankinter 'R'	7,329	98
BPE.IT	Bper Banca	7,232	98

Basing

Stocks trading near pivot on improving technical characteristics

Symbol	Name	Mkt Val, USD (Mil)	Composite Rating
NBH.FI	Nordea Bank (Hel)	42,819	97
EQT.SE	Eqf	37,395	99
PGHN.CH	Partners Group Holding	37,068	77
ABN.NL	Abn Amro Bank	8,079	98
LNBF.SE	Lundbergforetagen B	7,978	70
SCO.FR	Scor Se	6,236	93
HL.GB	Hargreaves Lansdown	5,114	77
EFGN.CH	Efg International N	4,113	97
AZM.IT	Azimut Holding	4,024	81
AZA.SE	Avanza Bank Holding	3,652	91
IGG.GB	Ig Group Holdings	3,643	83
SRBA.NO	Sparebank 1 Sr-Bank	3,413	92
VGP.BE	Vgp	3,157	82
CATE.SE	Catena	2,607	88
OSB.GB	Onesavings Bank	2,261	95

European Weekly Summary

WILLIAM O'NEIL+CO.

Health Care

European Focus List

O'Neil recommendations

Symbol	Name	Mkt Val, USD (Mil)	Focus List Since
NON.DK	Novo Nordisk 'B'	4,32,307	17-4-20
REC.IT	Recordati Indua.Chimica	11,443	22-12-23
YPSN.CH	Ypsomed Holding R	4,999	8-9-23
SFZN.CH	Siegfried 'R'	4,272	15-12-23

Breaking Out This Week

Stocks breaking out from consolidation

Symbol	Name	Mkt Val, USD (Mil)	Composite Rating
AMP.IT	Amplifon	8,405	85
DIA.IT	Diasorin	5,938	52
ALK.DK	Alk-Abello B	4,484	99
MEDI.SE	Medicover B	1,287	96
SPI.GB	Spire Healthcare Gp.	1,281	87

Laggards

Stocks showing technical weakness

Symbol	Name	Mkt Val, USD (Mil)	A/D, NmbR Htg, Cur Wk
GLPG.NL	Galapagos	1,892	-42
STMN.CH	Straumann Hldg.	20,976	-32

Top Rated

Stocks displaying the best Composite rating

Symbol	Name	Mkt Val, USD (Mil)	Composite Rating
NON.DK	Novo Nordisk 'B'	4,32,307	99
ALK.DK	Alk-Abello B	4,484	99
ROVI.ES	Lbos.Farmaceuticos Rovi	4,864	97
MEDI.SE	Medicover B	1,287	96
XVIV.SE	Xvivo Perfusion	1,110	94
DESN.CH	Dottikon Es Holding	3,953	93
BANB.CH	Bachem Holding	6,900	92
CTEC.GB	Convatec Group	6,717	92
BPHG.SE	Bonesupport Holding	1,400	92
AMB.DK	Ambu B	4,056	91
FAGR.BE	Fagron	1,492	91
BIOT.SE	Biotage	1,255	90
VIRB.FR	Virbac	3,252	89
CAMX.SE	Camurus	2,998	89
AZN.GB	Astrazeneca	2,39,855	87

Basing

Stocks trading near pivot on improving technical characteristics

Symbol	Name	Mkt Val, USD (Mil)	Composite Rating
IPN.FR	Ipsen	10,824	86
BANB.CH	Bachem Holding	6,900	92

European Weekly Summary

WILLIAM O'NEIL+CO.

Retail

European Focus List

O'Neil recommendations

Symbol	Name	Mkt Val, USD (Mil)	Focus List Since
IND.ES	Inditex	1,43,949	29-11-23

Breaking Out This Week

Stocks breaking out from consolidation

Symbol	Name	Mkt Val, USD (Mil)	Composite Rating
KGF.GB	Kingfisher	6,117	78
FDR.ES	Fluidra	4,822	85
MAB.GB	Mitchells & Butlers	1,910	58

Laggards

Stocks showing technical weakness

Symbol	Name	Mkt Val, USD (Mil)	A/D, Nbr Rtg, Cur Wk
UHR.CH	The Swatch Group	6,256	-40
OCDO.GB	Ocado Group	3,616	-34
DNLM.GB	Dunelm Group	2,602	-32
KER.FR	Kering	44,196	-28

Top Rated

Stocks displaying the best Composite rating

Symbol	Name	Mkt Val, USD (Mil)	Composite Rating
DIE.BE	D Ieteren Group	12,542	99
PND.DK	Pandora	13,396	97
NXT.GB	Next	14,778	94
EL.FR	Essilorluxottica	1,00,657	92
IND.ES	Inditex	1,43,949	90
MKS.GB	Marks & Spencer Group	6,976	90
FDR.ES	Fluidra	4,822	85
ELPB.SE	Electrolux Professional B	1,925	85
INCH.GB	Inchcape	4,071	81
BILI.SE	Bilia A	1,290	81
HMBF.SE	Hennes & Mauritz B	22,581	79
COL.BE	Colruyt Group	5,857	79
GRG.GB	Greggs	3,594	79
BC.IT	Brunello Cucinelli	6,969	78
KGF.GB	Kingfisher	6,117	78

Basing

Stocks trading near pivot on improving technical characteristics

Symbol	Name	Mkt Val, USD (Mil)	Composite Rating
NXT.GB	Next	14,778	94
MKS.GB	Marks & Spencer Group	6,976	90
FIEX.DE	Fielmann (Xet)	4,252	69

European Weekly Summary

WILLIAM O'NEIL+CO.

Technology

European Focus List

O'Neil recommendations

Symbol	Name	Mkt Val, USD (Mil)	Focus List Since
ASML.NL	Asml Holding	3,72,081	24-1-24
UNMG.NL	Universal Music Group	55,170	6-10-23
ASIN.NL	Asm International	33,105	1-12-23
SGE.GB	Sage Group	15,026	29-2-24
BESI.NL	Be Semiconductor Indust	11,656	5-4-24
NEMX.DE	Nemetschek (Xet)	10,618	15-11-23
HEMN.SE	Hemnet Group	2,561	1-6-23

Breaking Out This Week

Stocks breaking out from consolidation

Symbol	Name	Mkt Val, USD (Mil)	Composite Rating
IFCN.CH	Inficon	3,668	89
GAMA.GB	Gamma Communications	1,716	91
HUBN.CH	Huber+suhrner 'R'	1,632	68
OEAC.SE	Oem International B	1,159	91

Laggards

Stocks showing technical weakness

Symbol	Name	Mkt Val, USD (Mil)	A/D, Nmb	Rtg, Cur Wk
PESM.FR	Ovh Promesses	1,258		-55
NA9X.DE	Nagarro N (Xet)	1,083		-48
SCMN.CH	Swisscom 'R'	28,630		-42
INW.IT	Infrastrutture Wireless Ital	10,725		-36
TEMN.CH	Temenos N	4,511		-35
S92X.DE	Sma Solar Tech. (Xet)	1,758		-27
CLX.SE	Sinch	1,681		-26

Top Rated

Stocks displaying the best Composite rating

Symbol	Name	Mkt Val, USD (Mil)	Composite Rating
DARK.GB	Darktrace	5,249	99
QTGR.FI	Qt Group	2,090	99
SETB.SE	Sectra B	3,937	98
HEMN.SE	Hemnet Group	2,561	98
TRB.SE	Truecaller B	1,213	97
PROS.NL	Prosus	94,280	96
IOSX.DE	Ionos Grp	3,740	95
ANOD.SE	Addnode Group B	1,385	95
G24X.DE	Scout24 (Xet)	5,748	94
TRST.GB	Trustpilot Group	1,129	93
SMHNX.DE	Suess Microtec (Xet)	1,032	93
GAMA.GB	Gamma Communications	1,716	91
ALEK.FR	Esker	1,206	91
OEAC.SE	Oem International B	1,159	91
BCG.GB	Baltic Classifieds Grp	1,425	90

Basing

Stocks trading near pivot on improving technical characteristics

Symbol	Name	Mkt Val, USD (Mil)	Composite Rating
IFXX.DE	Infineon Techs. (Xet)	53,452	82
AUTO.GB	Auto Trader Group	8,416	86
OXIG.GB	Oxford Instruments	1,757	89
NCAB.SE	Ncab Group	1,342	82
TRST.GB	Trustpilot Group	1,129	93

European Weekly Summary

WILLIAM O'NEIL+CO.

Transportation

European Focus List

O'Neil recommendations

Symbol	Name	Mkt Val, USD (Mil)	Focus List Since
--------	------	--------------------	------------------

Breaking Out This Week

Stocks breaking out from consolidation

Symbol	Name	Mkt Val, USD (Mil)	Composite Rating
WWL.NO	Wallenius Wilhelmsen	4,793	96
IDL.FR	Id Logistics Group	2,447	95

Laggards

Stocks showing technical weakness

Symbol	Name	Mkt Val, USD (Mil)	A/D, Nmb	Rtg, Cur Wk
LHAX.DE	Deutsche Lufthansa (Xet)	8,594		-31

Top Rated

Stocks displaying the best Composite rating

Symbol	Name	Mkt Val, USD (Mil)	Composite Rating
AVAN.NO	Avance Gas	1,238	98
INPW.NL	Inpost	8,278	97
SNL.NO	Stolt-Nielsen	2,737	97
BWLP.NO	Bw Lpg	2,228	97
WWL.NO	Wallenius Wilhelmsen	4,793	96
CAF.ES	Const Y Auxiliar De Ferr	1,250	96
ODF.NO	Odfjell A	1,054	96
IDL.FR	Id Logistics Group	2,447	95
IAG.GB	Intl.Cons.Airl.Gp.(Cdi)	11,147	92
LOGI.ES	Logista Hold	3,778	91
EZJ.GB	Easyjet	4,978	90
WWI.NO	Wilhs.Wilhelmsen Hdq.'A'	1,229	89
PST.IT	Poste Italiane	17,311	88
REDD.GB	Northgate	1,137	88
CKN.GB	Clarkson	1,510	87

Basing

Stocks trading near pivot on improving technical characteristics

Symbol	Name	Mkt Val, USD (Mil)	Composite Rating
HOAH.NO	Hoegh Autoliners	2,068	81
AVAN.NO	Avance Gas	1,238	98

European Weekly Summary

WILLIAM O'NEIL+CO.

Utility

European Focus List

O'Neil recommendations

Symbol	Name	Mkt Val, USD (Mil)	Focus List Since
--------	------	--------------------	------------------

Breaking Out This Week

Stocks breaking out from consolidation

Symbol	Name	Mkt Val, USD (Mil)	Composite Rating
EOANX.DE	E On (Xet)	37,540	49

Laggards

Stocks showing technical weakness

Symbol	Name	Mkt Val, USD (Mil)	A/D, Nbr Rtg, Cur Wk
--------	------	--------------------	----------------------

Top Rated

Stocks displaying the best Composite rating

Symbol	Name	Mkt Val, USD (Mil)	Composite Rating
TEP.GB	Telecom Plus	1,806	93
IBE.ES	Iberdrola	84,477	88
DRX.GB	Drax Group	2,675	88
REE.ES	Redeia Corporacion	9,587	83
A2A.IT	A2a	6,494	82
NG.GB	National Gas Transmissic	51,992	77
EVN.AT	Evn	5,638	75
ENGI.FR	Engie	41,550	73
SSE.GB	Sse	24,782	73
ACE.IT	Acea	3,718	71
FORT.FI	Fortum	12,955	69
VIE.FR	Veolia Environ	22,894	68
TRN.IT	Terna Rete Elettrica Naz	17,043	64
ENEL.IT	Enel	73,972	63
HER.IT	Hera	5,615	62

Basing

Stocks trading near pivot on improving technical characteristics

Symbol	Name	Mkt Val, USD (Mil)	Composite Rating
NG.GB	National Gas Transmissic	51,992	77
TRN.IT	Terna Rete Elettrica Naz	17,043	64

Disclaimer

William O'Neil + Co. Incorporated offers the world's leading institutional investment managers a distinct blend of quantitative, fundamental, and technical expertise in global stock buy-and-sell recommendations. Its core method profiles stocks displaying the characteristics of outperformance proven persistent over market history—drawn from the firm's industry-leading database.

William O'Neil + Co. Incorporated is an SEC Registered Investment Advisor. William O'Neil India Pvt Ltd Associates and William O'Neil Shanghai Pvt. Ltd. may develop research content on behalf of William O'Neil + Co. Our content should not be relied upon as the sole factor in determining whether to buy, sell, or hold a stock. For important information about reports, our business, and legal notices (including our Privacy Policy), please go to williamoneil.com/legal.

Limitations of Use of Stock Charts

Our content and stock charts, which provide certain current and historical information, should not be relied upon as the sole factor in determining whether to buy, sell, or hold a stock. The charts provide certain current and historical information, but are not a substitute for a comprehensive analysis of the individual stocks.

No Investment Banking

William O'Neil + Co. and its affiliates do not engage in investment banking and do not make a market in any securities. Neither William O'Neil + Co. nor any of its affiliates have, during the past 12 months, received any compensation from any of the companies discussed in this report. None of the companies discussed in this report are, or have been during the past 12 months, clients of William O'Neil + Co. or its affiliates.

Proprietary Positions

William O'Neil + Co. does not maintain proprietary positions in any securities. Employees of William O'Neil + Co. and its affiliates may now or in the future own positions in the companies discussed in this report. As of the end of the month immediately preceding the date of publication of such reports, none of such employees or affiliates beneficially owned 1% or more of the common equity securities of any of the companies discussed in this report.

© 2023, William O'Neil + Company, Inc. All rights reserved.

No part of this material may be copied or duplicated in any form by any means or redistributed without the prior written consent of William O'Neil + Co.