

33144132222
EPS Rank 90

Paris, FRANCE Inc 1987

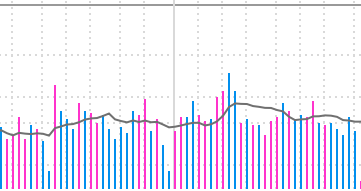
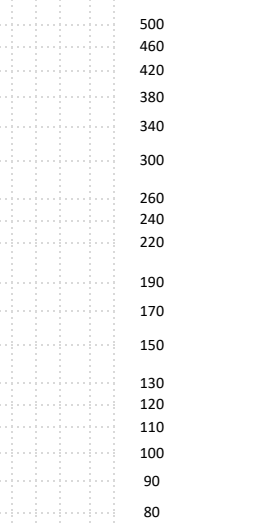
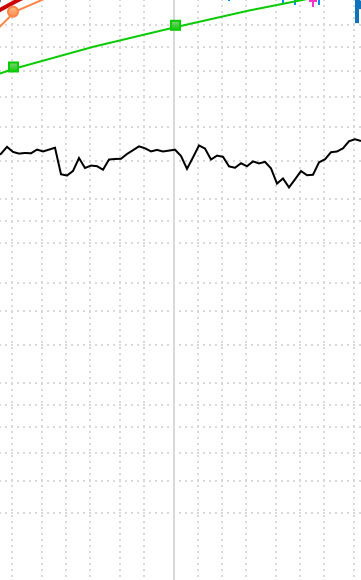
MGMT owns --

Europe Long -1.28% in 1.1 WKS

OH -10%	LOG (Fixed)	PRICE
---------	-------------	-------

The line graph illustrates the number of people in the workforce from 1990 to 2010. The x-axis represents years from 1990 to 2010 in 5-year increments. The y-axis represents the number of people in millions, ranging from 0 to 140 in increments of 20. The workforce starts at approximately 100 million in 1990, rises to about 110 million by 1995, and then fluctuates between 110 and 120 million until 2000. A sharp decline occurs around 2003, dropping to approximately 105 million, followed by a recovery to about 115 million by 2008, and a final rise to approximately 125 million by 2010.

679.50 EUR
-2.70 -0.40%



LOG VOLUME

6M

3M

2M

-41%

486.0K

	Sep 21	Dec 21	Mar 22	Jun 22	Sep 22
1		13.40		12.99	
2		+61%		+24%	
3		35,550.0		36,729.0	
4		+35%		+28%	
5				+1.7%	
6					
7	4,039	4,255	4,367	4,527	
8	103M	104M	105M	105M	

3	Jun 23		P/E	26
	15.01e		2022 Est.:	24.3
	+16%e		2023 Est.:	21.9
			5-yr High:	55
			5-yr Low:	19
			vs Ind. Avg:	1.5x