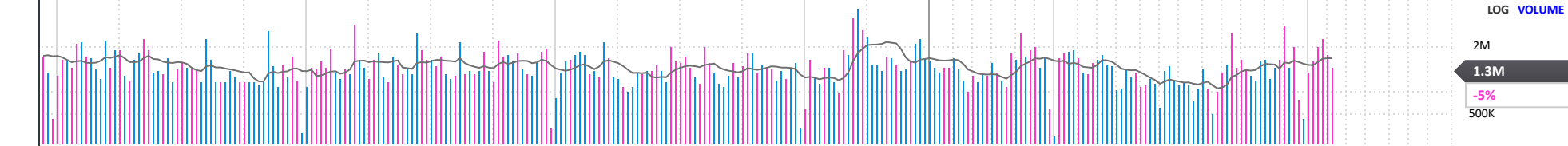
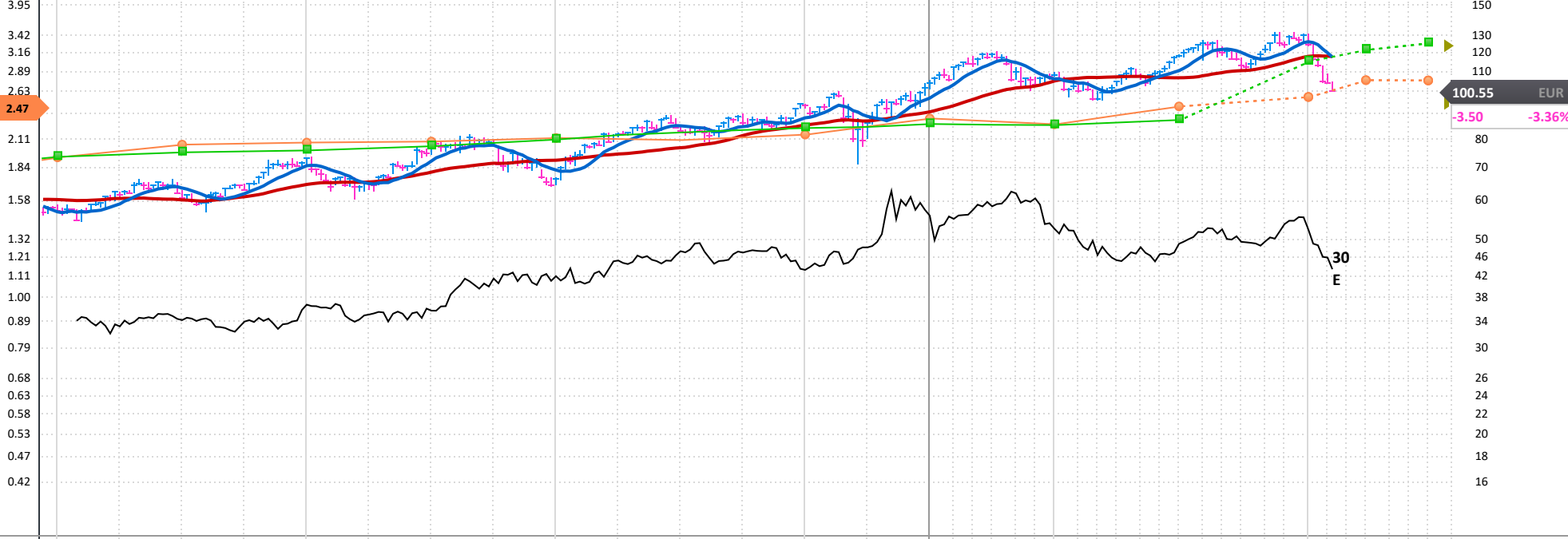


495531900 symrise.com Holzminden, GERMANY Inc 2006 MGMT owns -- OH -24% LOG (Fixed) PRICE

Symrise AG is a global supplier of fragrances, flavorings, cosmetic active ingredients and raw materials, as well as functional ingredients. It operates through the following three segments: Scent Care, Flavor and Nutrition. The Scent and Care segment develops, produces and sells fragrances, cosmetic ingredients, aroma molecules and mint aromas. The Flavor segment offers flavors and ingredients which are used in beverages, savory and sweet business. The Nutrition segment offers solutions for food production based on natural ingredients. The company was founded in 2003 and is headquartered in Holzminden, Germany. [LESS](#)

ANNUAL - DEC END	2012	2013	2014	2015	2016	2017	2018	2019	2020	2021 Estimate	2022 Estimate
EPS EUR	1.33	1.46	1.48	1.90	1.94	2.08	2.12	2.16	2.27	2.69	2.92
CASH FLOW/SHR EUR	1.68	2.14	2.23	2.63	2.31	2.71	3.13	3.68	4.28	Earnings Growth Rate	
PRETAX MARGIN %	12%	13%	12%	14%	12%	13%	12%	12%	12%	Sales Growth Rate	
RETURN ON EQUITY %	18%	19%	16%	17%	15%	16%	15%	12%	13%	2019-21 5% (2 Stability)	
SALES % CHANGE	10%	6%	16%	23%	12%	3%	5%	8%	3%	2017-21 5% (2 Stability)	
SALES (MIL) EUR	1,736	1,832	2,123	2,604	2,908	3,002	3,160	3,420	3,539	COMP RATING	46
										SMR RATING	B
										INV T/O	2.5x 43
WEEKLY	Dec 17	Dec 24	Dec 31	Jan 7	Jan 14	Jan 21	Jan 28	Feb 4	Feb 10	DEBT %	2018-20
DATAGRAPH RATING	58	66	56	57	58	54	47	44	43	TAX RATE	2018-20
AVG DAILY VOL (000)	287	302	299	288	288	301	326	330	302	2018-20	55%
UP DOWN VOLUME	1.9	1.8	1.6	1.3	1.1	1.1	0.8	0.7	0.9	BACKLOG	2018-20
ACCUM/DIST RATING	-13	-28	-26	-36	-41	-29	-45	-33	-35	R & D	6.00%
RELATIVE STRENGTH	79	84	76	73	60	51	38	36	30	DIV EUR	0.97 (1.0%)
GROUP RANK	111	67	106	107	93	92	25	82	87	BETA	0.53(17.00)
										ALPHA	-0.02 (-0.01)
										2020 EMPLOYEES	10,531 (3%)



FINANCIALS	7	Sep 17	Dec 17	Mar 18	Jun 18	Sep 18	Dec 18	Mar 19	Jun 19	Sep 19	Dec 19	Mar 20	Jun 20	Sep 20	Dec 20	Mar 21	Jun 21	Sep 21	Dec 21	Mar 22	Jun 22	P/E	41
EPS (EUR)			0.99		1.10		1.02				2.16		1.25		1.02		1.45		0.62e		1.44e		2021 Est.: 37.3
EPS % CHANGE					+1%		+3%										+16%		-39%		-1%		2022 Est.: 34.4
SALES (MIL EUR)			1,481.0		1,575.5		1,578.6				3,419.8		1,821.2		1,699.2		1,907.9		1,910.3e		2,132.4e		5-yr High: 53
SALES % CHANGE					+4%		+7%										+5%		+12%		+12%		5-yr Low: 27
EPS % SURPRISE																							vs Ind. Avg: 2.1x
FUNDS		859	881	885	951	1,013	1,035	1,101	1,187	1,189	1,153	1,210	1,413	1,459	1,541	1,492	1,438				1,512		
SHARES HELD BY FUNDS		57M	56M	56M	56M	55M	55M	57M	56M	57M	56M	57M	58M	58M	57M	59M	58M				60,664,569		