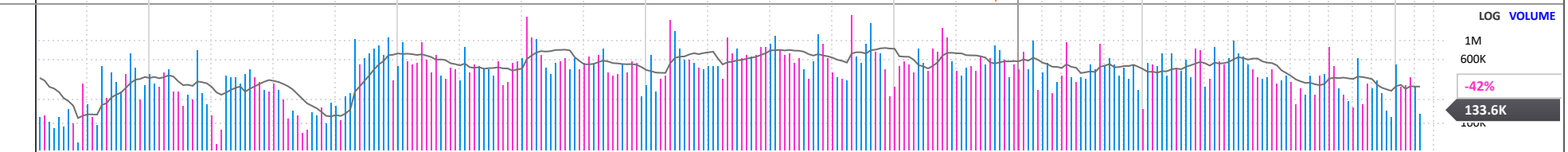
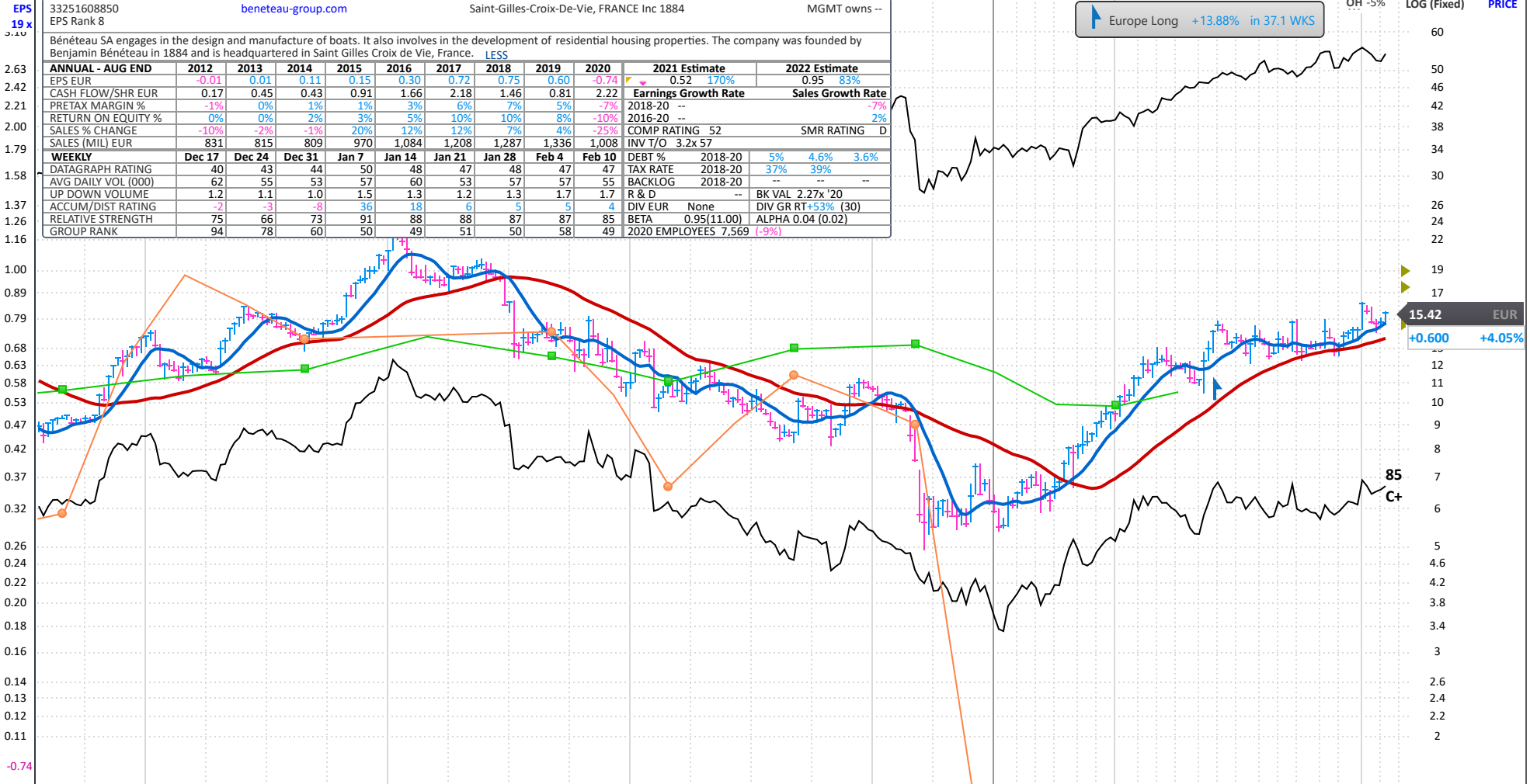


33251608850 beneteau-group.com Saint-Gilles-Croix-De-Vie, FRANCE Inc 1884 MGMT owns --

Beneteau SA engages in the design and manufacture of boats. It also involves in the development of residential housing properties. The company was founded by Benjamin Beneteau in 1884 and is headquartered in Saint Gilles Croix de Vie, France.

ANNUAL - AUG END	2012	2013	2014	2015	2016	2017	2018	2019	2020	2021 Estimate	2022 Estimate
EPS EUR	-0.01	0.01	0.11	0.15	0.30	0.72	0.75	0.60	-0.74	0.52	0.95
CASH FLOW/SHR EUR	0.17	0.45	0.43	0.91	1.66	2.18	1.46	0.81	2.22		
PRETAX MARGIN %	-1%	0%	1%	1%	3%	6%	7%	5%	-7%		
RETURN ON EQUITY %	0%	0%	2%	3%	5%	10%	10%	8%	-10%		
SALES % CHANGE	-10%	-2%	-1%	20%	12%	12%	7%	4%	-25%		
SALES (MIL) EUR	831	815	809	970	1,084	1,208	1,287	1,336	1,008		
DEBT %										2018-20	2021-20
TAX RATE										5%	4.6%
BACKLOG										37%	39%
R & D											3.6%
DIV EUR										None	BK VAL 2.27x '20
BETA										0.95(11.00)	ALPHA 0.04 (0.02)
2020 EMPLOYEES										7,569	(-9%)



FINANCIALS	17	May 17	Aug 17	Nov 17	Feb 18	May 18	Aug 18	Nov 18	Feb 19	May 19	Aug 19	Nov 19	Feb 20	May 20	Aug 20	Nov 20	Feb 21	May 21	Aug 21	Nov 21	Feb 22	P/E	
EPS (EUR)			0.72				0.75		-0.02		0.62					-0.74							2021 Est.: 29.4
EPS % CHANGE							+4%																2022 Est.: 16.3
SALES (MIL EUR)			1,208.3				1,287.2		495.9		840.3					1,008.4							5-yr High: 39
SALES % CHANGE							+7%																5-yr Low: 11
EPS % SURPRISE																							vs Ind. Avg:
FUNDS	76	83	91	115	130	143	134	138	147	146	147	156	150	135	123	123							
SHARES HELD BY FUNDS	85	9,864,559	10M	12M	11M	9,835,756	9,528,746	12M	13M	12M	12M	13M	12M	9,972,719	11M	10M							