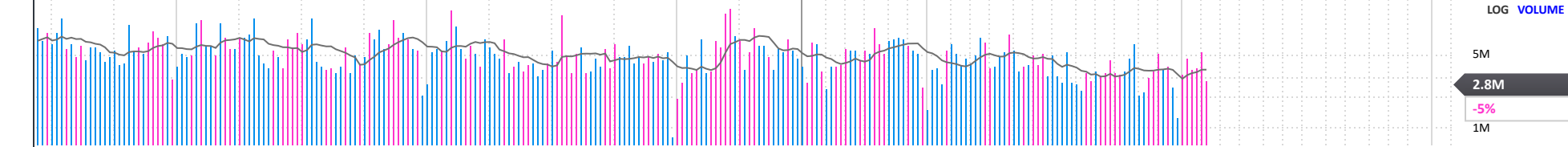
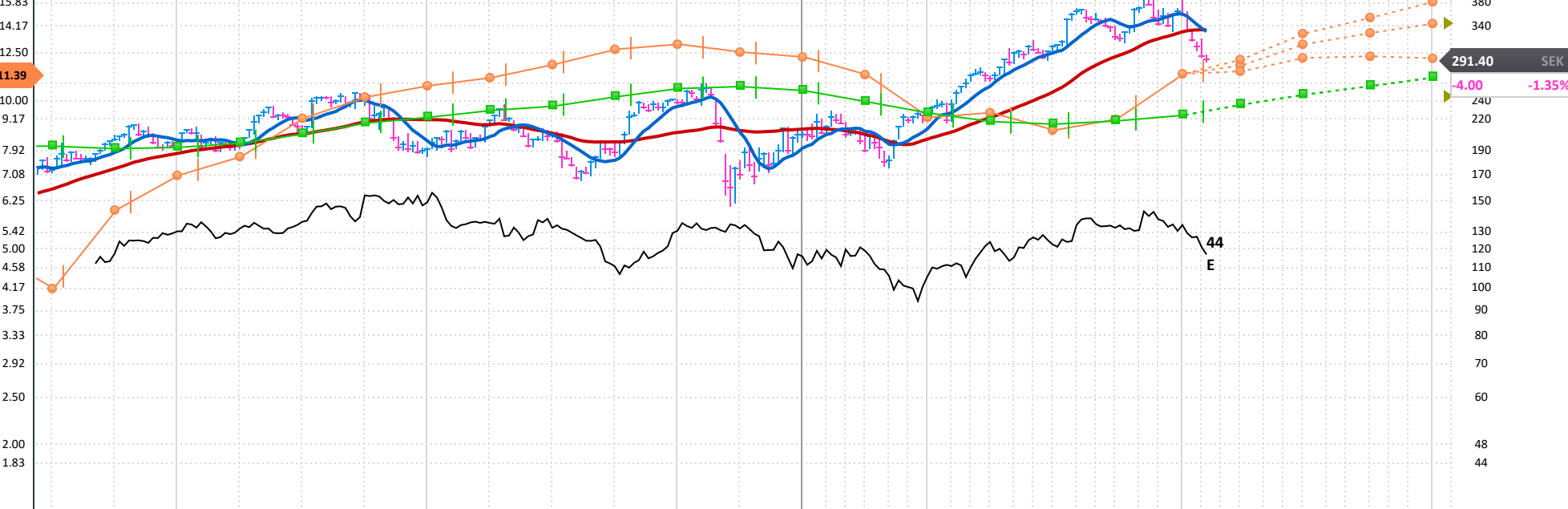


4646366500	alfalaval.com										Lund, SWEDEN Inc 1883										MGMT owns --																																																																																																																																																																																																																																											
EPS Rank 94																																																																																																																																																																																																																																																																
Alfa Laval AB engages on energy optimization, environmental protection and food production. It operates through the following business segments: Energy, Food Water, Marine, Greenhouse, and Operations Other. The Energy segment is comprised of brazed and fusion bonded heat exchangers, energy separation, gasketed plate heat exchangers and welded heat exchangers. The Food Water segment is consist of decanters, food heat transfer, food systems, hygienic fluid handling and high speed separators. The Marine segment represents boiler and gas systems, marine separation and heat transfer equipment, and pumping systems. The Operation Other segment covers the procurement, production and logistics as well as corporate overhead and non core businesses. The company was founded by Gustaf de Laval and Oscar Lamm in 1883 and is headquartered in Lund, Sweden. <a href="#">LESS</a>																																																																																																																																																																																																																																																																
<b>ANNUAL - DEC END</b>																<b>2013</b>								<b>2014</b>								<b>2015</b>								<b>2016</b>								<b>2017</b>								<b>2018</b>								<b>2019</b>								<b>2020</b>								<b>2021</b>								<b>2022 Estimate</b>								<b>2023 Estimate</b>																																																																																																																																																																
EPS SEK	7.22																7.02																9.15																5.46																7.09																10.77																13.08																8.47																11.38																14.18																25%																16.16																14%																																																															
CASH FLOW/SHR SEK	9.60																11.54																13.49																11.68																10.53																11.52																12.07																17.97																12.09																Earnings Growth Rate																Sales Growth Rate																																																																																															
PRETAX MARGIN %	14%																12%																14%																9%																12%																15%																16%																12%																15%																12%																16%																13%																16%																13%																16%																4%															
RETURN ON EQUITY %	19%																18%																22%																12%																15%																21%																22%																13%																16%																13%																16%																13%																16%																4%																																															
SALES % CHANGE	0%																18%																13%																-10%																-1%																15%																14%																-11%																-1%																COMP RATING 55																SMR RATING B																																																																																															
SALES (MIL) SEK	30K																35K																40K																36K																35K																41K																47K																41K																41K																INV T/O 2.7x 47																																																																																																															
<b>WEEKLY</b>																<b>Dec 17</b>								<b>Dec 24</b>								<b>Dec 31</b>								<b>Jan 7</b>								<b>Jan 14</b>								<b>Jan 21</b>								<b>Jan 28</b>								<b>Feb 4</b>								<b>Feb 10</b>								<b>2019-21</b>								<b>2020-21</b>								<b>2021-21</b>								<b>2022-21</b>								<b>2023-21</b>																																																																																																																																								
DATAGRAPH RATING	63																63																62																64																58																50																49																57																57																2019-21																45%																33%																14%																																																															
AVG DAILY VOL (000)	738																750																745																671																672																708																743																777																777																2019-21																24%																28%																22%																																																															
UP/DOWN VOLUME	1.1																1.0																0.9																0.8																0.6																0.5																0.5																0.5																2.80%																BK VAL 4.11x '21																																																																																																															
ACCUM/DIST RATING	-12																-16																-10																-20																-32																-34																-40																-58																-60																6.00 (2.1%)																DIV GR RT+4% (3)																																																																																															
RELATIVE STRENGTH	77																76																78																78																74																66																49																44																1.10(48.00)																ALPHA 0.01 (0.01)																																																																																																															
GROUP RANK	33																33																35																33																31																39																53																70																69																2021 EMPLOYEES 17,883 (6%)																																																																																																															



<b>FINANCIALS</b>	7	Mar 18	Jun 18	Sep 18	Dec 18	Mar 19	Jun 19	Sep 19	Dec 19	Mar 20	Jun 20	Sep 20	Dec 20	Mar 21	Jun 21	Sep 21	Dec 21	Mar 22	Jun 22	Sep 22	Dec 22	P/E	25
EPS (SEK)	2	2.49	2.65	2.55	3.08	2.90	3.36	3.43	3.39	2.43	3.07	2.46	1.33	2.64	2.32	2.91	3.51	3.10e	3.55e	3.63e	4.13e	2022 Est.:	20.6
EPS % CHANGE	5	+35%	+135%	+60%	+22%	+16%	+27%	+35%	+10%	-16%	-9%	-28%	-61%	+9%	-24%	+18%	+164%	+17%e	+53%e	+25%e	+18%e	2023 Est.:	18.0
SALES (MIL SEK)	0	8,851.0	10,475.0	10,131.0	11,209.0	10,158.0	11,339.0	12,056.0	12,964.0	10,590.0	10,455.0	9,728.0	10,695.0	8,969.0	9,975.0	10,275.0	11,692.0	11.0Ke	11,940.3e	12,119.4e	13,588.2e	5-yr High:	44
SALES % CHANGE	5	+9%	+18%	+24%	+11%	+15%	+8%	+19%	+16%	+4%	-8%	-19%	-18%	-15%	-5%	+6%	+9%	+22%e	+20%e	+18%e	+16%e	5-yr Low:	12
EPS % SURPRISE	5	+16.3%	+2.0%	-5.9%	0.0%	+4.7%	+5.5%	+10.5%	+1.2%	-12.9%	+44.9%	-11.3%	-50.3%	+7.4%	-11.4%	-4.3%	+4.2%					vs Ind. Avg:	0.9x
FUNDS	9	726	774	816	792	803	832	824	885	871	896	959	952	1,036	1,117	1,131	1,139						
SHARES HELD BY FUNDS	1	119M	122M	124M	120M	129M	129M	134M	133M	124M	123M	120M	119M	128M	131M	126M	129M						