

EPS 35 x
12.00
10.86
9.71
8.57
7.43
6.86
6.29
5.43
4.86
4.29
3.71
3.43
3.14
2.88

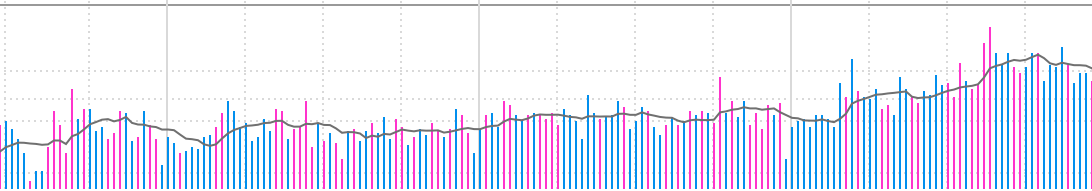
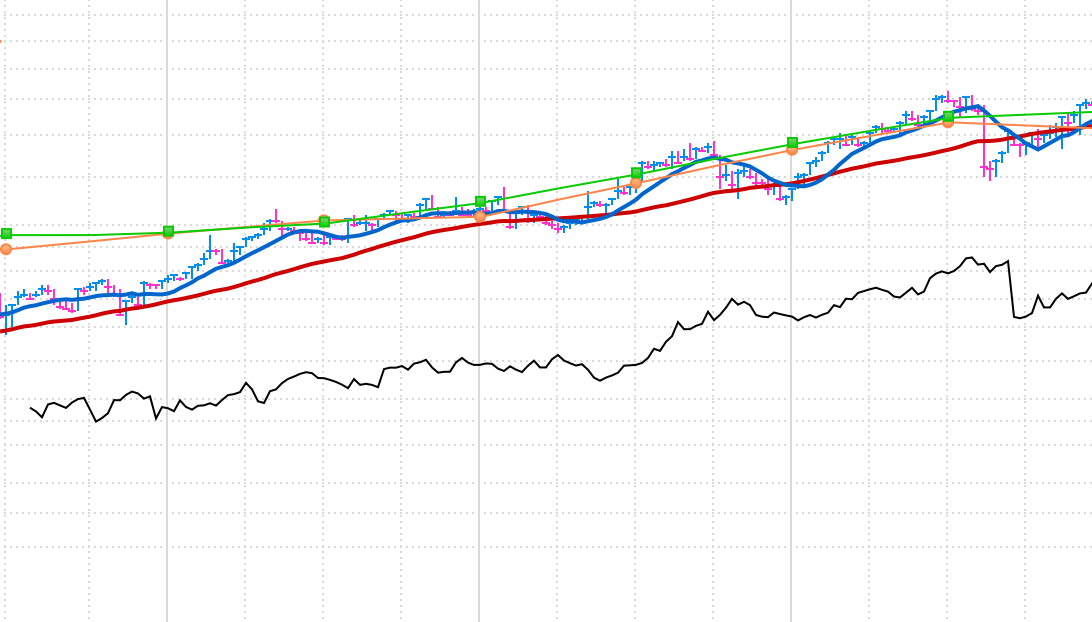
31102908684
EPS Rank 91
imcdgroup.com
Rotterdam, NETHERLANDS Inc 1995
MGMT owns --

OH -4% LOG (Fixed) PRICE

Europe Long +97.36% in 70 WKS

IMCD NV markets, sells and distributes chemicals. It offers food and nutrition, pharmaceutical, and personal care products to life science markets; and coatings, lubricants, synthesis, plastics, and detergents to industrial end markets. The firm operates through following segments: EMEA, Americas, Asia Pacific and Holding Companies. The EMEA segment operates all companies in Europe, Turkey and Africa. The Americas segment operates all companies in the United States of America, Canada, Brazil, Puerto Rico, Chile, Argentina, Uruguay, Colombia and Mexico. The Asia Pacific segment operates all companies in Australia, New Zealand, India, China, Malaysia, Indonesia, Philippines, Thailand, Singapore, Vietnam, Japan and South Korea. The Holding Companies segment operates all non operating companies, including the head office in Rotterdam and the regional offices in Singapore and New Jersey, the United States. The company was founded in 1995 and is headquartered in Rotterdam, Netherlands. [LESS](#)

ANNUAL - DEC END	2012	2013	2014	2015	2016	2017	2018	2019	2020	2021 Estimate	2022 Estimate
EPS EUR	-0.36	-0.11	0.40	1.20	1.39	1.47	1.91	2.06	2.25	4.37	4.61
CASH FLOW/SHR EUR	0.66	0.16	0.74	1.67	1.91	2.17	2.18	3.32	4.50		
PRETAX MARGIN %	0%	1%	2%	5%	6%	6%	6%	6%	6%	14%	10%
RETURN ON EQUITY %			9%	10%	11%	11%	13%	13%	11%	15%	14%
SALES % CHANGE	30%	10%	10%	13%	12%	11%	25%	13%	3%		
SALES (MIL) EUR	1,117	1,233	1,358	1,530	1,715	1,907	2,379	2,690	2,775		
DEBT %	2018-20	61%	61%	31%							
TAX RATE	2018-20	28%	28%	27%							
BACKLOG	2018-20	--	--	--							
R & D										BK VAL 7.42x '20	
DIV EUR	1.02 (0.6%)									DIV GR RT+13% (4)	
BETA	0.68(20.00)									ALPHA 0.12 (0.09)	
2020 EMPLOYEES	3,298									(10%)	



FINANCIALS	6	Mar 17	Jun 17	Sep 17	Dec 17	Mar 18	Jun 18	Sep 18	Dec 18	Mar 19	Jun 19	Sep 19	Dec 19	Mar 20	Jun 20	Sep 20	Dec 20	Mar 21	Jun 21	Sep 21	Dec 21	
EPS (EUR)	6		0.82		0.66		1.02		0.88		1.23		0.83		1.22		1.03		1.85		2.35e	
EPS % CHANGE	5		+9%		+3%		+24%		+33%		+21%		-6%		-1%		+24%		+52%		+128%e	
SALES (MIL EUR)	7		936.2		971.1		1,151.8		1,227.3		1,398.1		1,291.5				2,774.9		1,673.9		1,852.5e	
SALES % CHANGE	5		+6%		+17%		+23%		+26%		+21%		+5%				+115%		+10.3%		+23.0%	
EPS % SURPRISE	5		-6.0%		-6.6%		-1.5%		-6.6%													
FUNDS	5		217		224		247		262		264		290		333		357		382		440	
SHARES HELD BY FUNDS	1		26M		27M		27M		27M		28M		28M		28M		28M		29M		30M	

OH -4% LOG (Fixed) PRICE

167.20 EUR

+3.55 +2.17%

LOG VOLUME

900K

500K

304.3K

+24%

P/E 57

2021 Est.: 38.3

2022 Est.: 36.3

5-yr High: 50

5-yr Low: 25

vs Ind. Avg: 2.3x